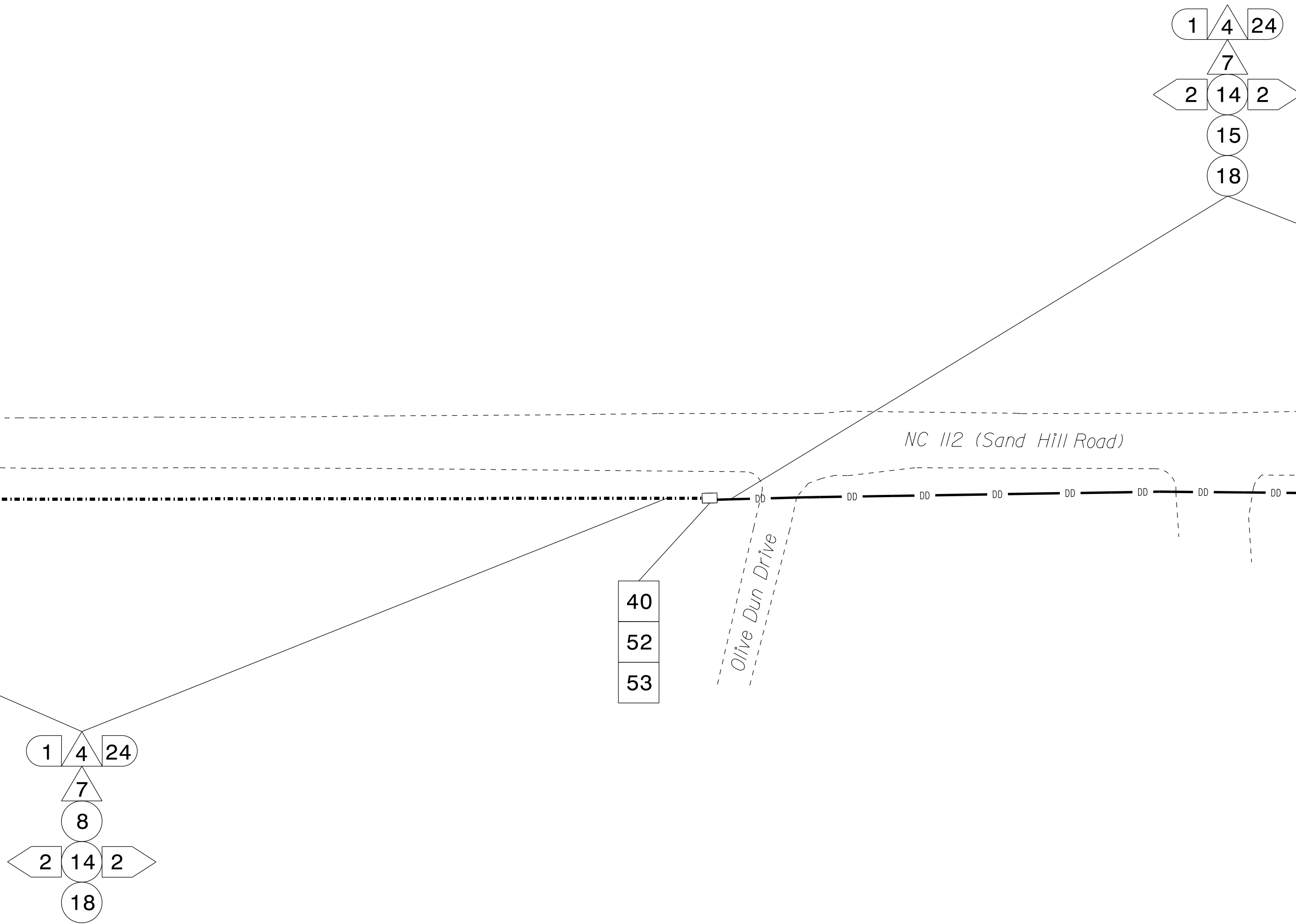


MATCHLINE - SHEET CRP-6.235

MATCHLINE - SHEET CRP-6.237

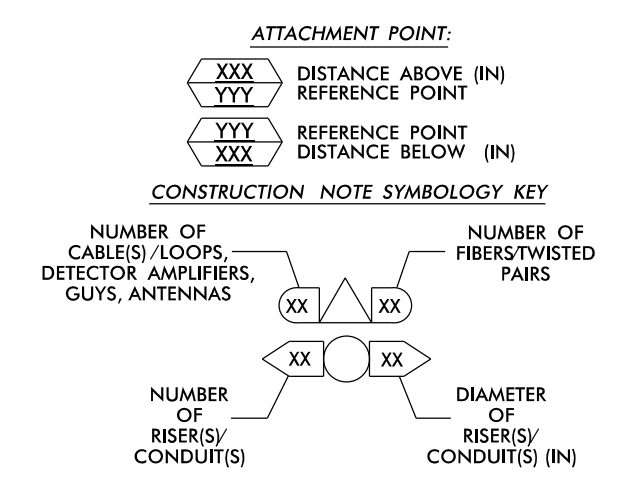
This area has been determined to contain properties with documented historic significance. If it is necessary to deviate from these plans in this area, alert the Engineer to contact Project Development and Environmental Analysis Branch - Historic Architecture Group of the North Carolina Department of Transportation for an effects determination before proceeding.



NOTES:

- 1. UNLESS OTHERWISE NOTED:
- OVERLASH NEW FIBER OPTIC CABLE TO EXISTING COMMUNICATIONS CABLE.
- ATTACH NEW MESSENGER CABLE 40" BELOW POWER.
- ATTACH ON FRONT SIDE (FS) OF POLE.
2. SEAL ALL CONDUIT ENDS WITH DUCT AND CONDUIT SEALER, AT ALL JUNCTION BOX / CABINET ENTRANCES.

Table with 4 columns of callout numbers and descriptions for various cable and equipment installation tasks, such as 'INSTALL COMPOSITE CCTV CABLE', 'INSTALL NEW RISER INTO POLE MOUNTED CABINET', etc.



ATKINS 1616 EAST MILLBROOK ROAD, SUITE 160 RALEIGH, NORTH CAROLINA 27609 (919) 876-6888 NCBEEES #F-0326

Project information block including 'Asheville Signal System Cable Routing Plans', 'Division 13 Buncombe County Asheville', 'Prepared by: J A Wiles', 'Reviewed by: M B Toth', and a professional seal for Melissa B. Toth, Engineer.

22-DEC-2016 10:16 0:47:15B Asheville:116 Sig SysTask 11-CL-ACL 236.dgn