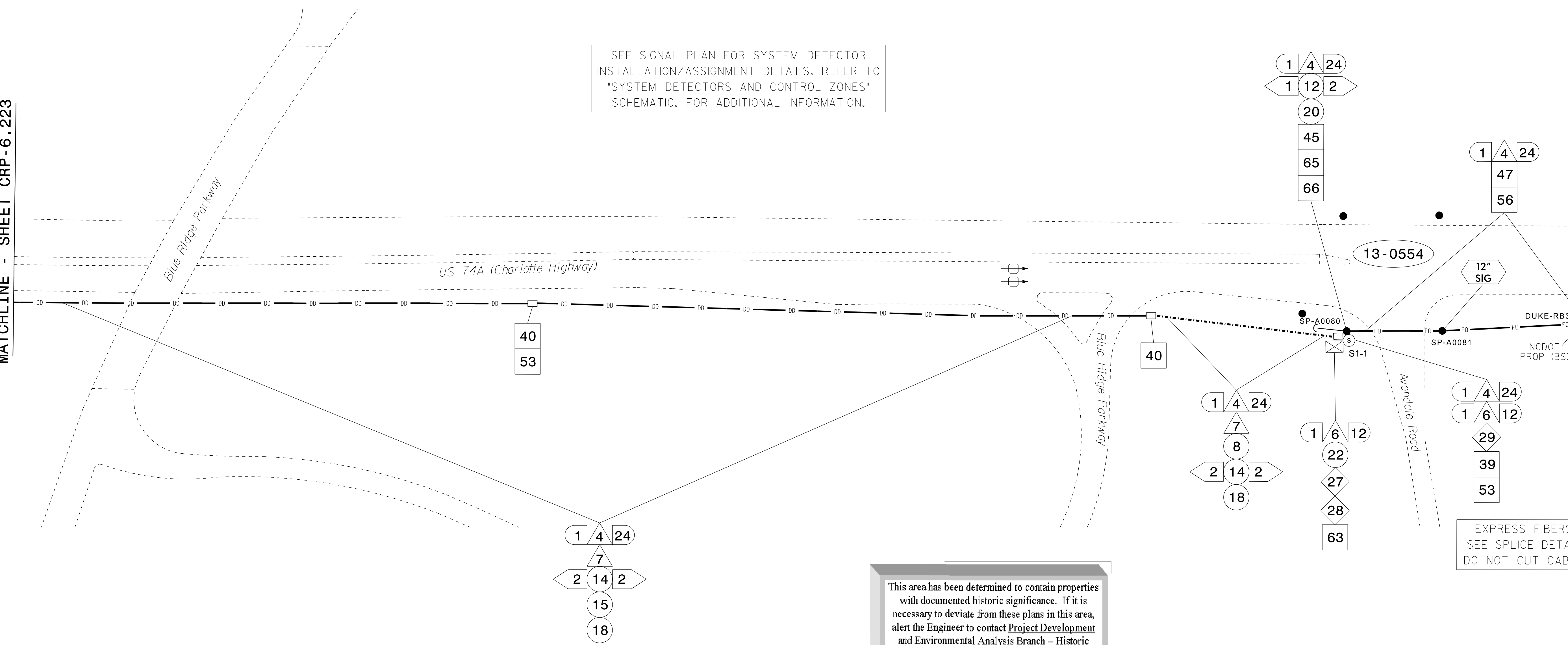


MATCHLINE - SHEET CRP-6.223

MATCHLINE - SHEET CRP-6.225

SEE SIGNAL PLAN FOR SYSTEM DETECTOR INSTALLATION/ASSIGNMENT DETAILS. REFER TO "SYSTEM DETECTORS AND CONTROL ZONES" SCHEMATIC. FOR ADDITIONAL INFORMATION.

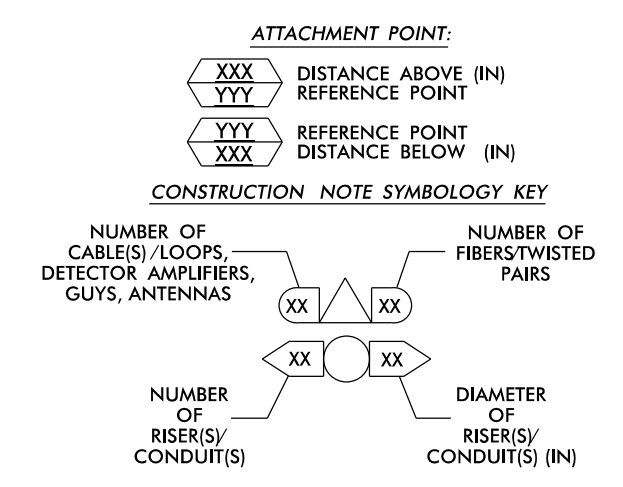


This area has been determined to contain properties with documented historic significance. If it is necessary to deviate from these plans in this area, alert the Engineer to contact Project Development and Environmental Analysis Branch - Historic Architecture Group of the North Carolina Department of Transportation for an effects determination before proceeding.

EXPRESS FIBERS SEE SPLICE DETAIL DO NOT CUT CABLE

- NOTES:
1. UNLESS OTHERWISE NOTED:
- OVERLASH NEW FIBER OPTIC CABLE TO EXISTING COMMUNICATIONS CABLE.
- ATTACH NEW MESSENGER CABLE 40" BELOW POWER.
- ATTACH ON FRONT SIDE (FS) OF POLE.
2. SEAL ALL CONDUIT ENDS WITH DUCT AND CONDUIT SEALER, AT ALL JUNCTION BOX / CABINET ENTRANCES.

Table with 4 columns of numbered callouts (1-80) and their corresponding installation instructions for various cable and equipment tasks.



ATKINS 1616 EAST MILLBROOK ROAD, SUITE 160 RALEIGH, NORTH CAROLINA 27609 (919) 876-6888 NCBEES #F-0326

Project information block including 'Asheville Signal System Cable Routing Plans', 'Division 13 Buncombe County Asheville', 'Prepared by: J A Wiles', 'Reviewed by: M B Toth', and a professional seal for Melissa B. Toth, Engineer, dated 12/15/2016.

15-DEC-2016 14:09 D:\projects\atkins\crp\crp6\crp6\crp6.dwg U-4715B Asheville\110 Sig Sys\Task 11-CL\CL 224.dgn AT DUS300019