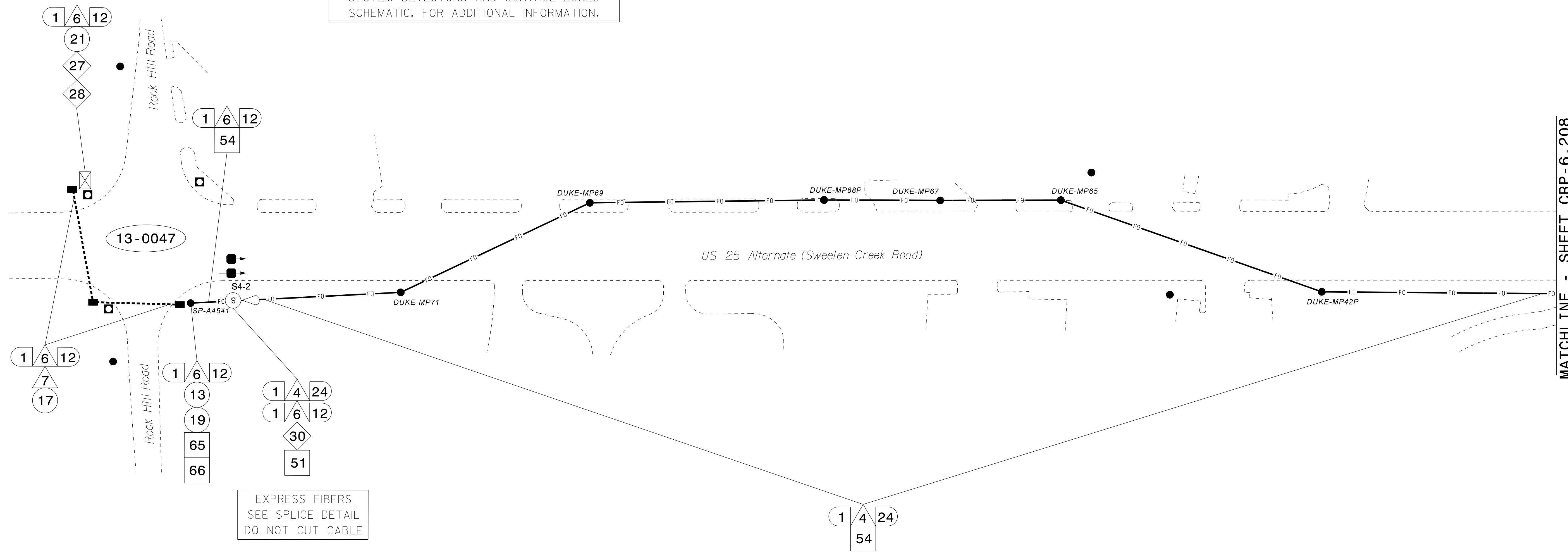


SEE SIGNAL PLAN FOR SYSTEM DETECTOR INSTALLATION/ASSIGNMENT DETAILS. REFER TO "SYSTEM DETECTORS AND CONTROL ZONES" SCHEMATIC. FOR ADDITIONAL INFORMATION.

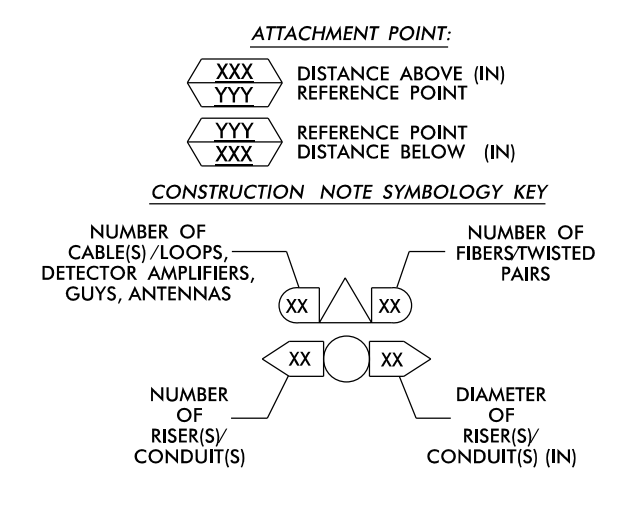


MATCHLINE - SHEET CRP-6.208

NOTES:

- 1. UNLESS OTHERWISE NOTED:
- OVERLASH NEW FIBER OPTIC CABLE TO EXISTING COMMUNICATIONS CABLE.
- ATTACH NEW MESSENGER CABLE 40" BELOW POWER.
- ATTACH ON FRONT SIDE (FS) OF POLE.
2. SEAL ALL CONDUIT ENDS WITH DUCT AND CONDUIT SEALER, AT ALL JUNCTION BOX / CABINET ENTRANCES.

Table of 80 numbered items detailing installation and removal tasks for various cable, conduit, and equipment components.



ATKINS 1616 EAST MILLBROOK ROAD, SUITE 160 RALEIGH, NORTH CAROLINA 27609 (919) 876-6888 NCBEEES #F-0326

Professional seal and title block for Asheville Signal System Cable Routing Plans, prepared by J A Wiles, reviewed by M B Toth, dated December 2016.

15-DEC-2016 14:08 D:\projects\crp\atkins\tr\off\c\curr\100048632 U-4715B Asheville\116 Sig Sys\Task 11-CL-MCL 207.dgn AT DUS300019 WILE2054