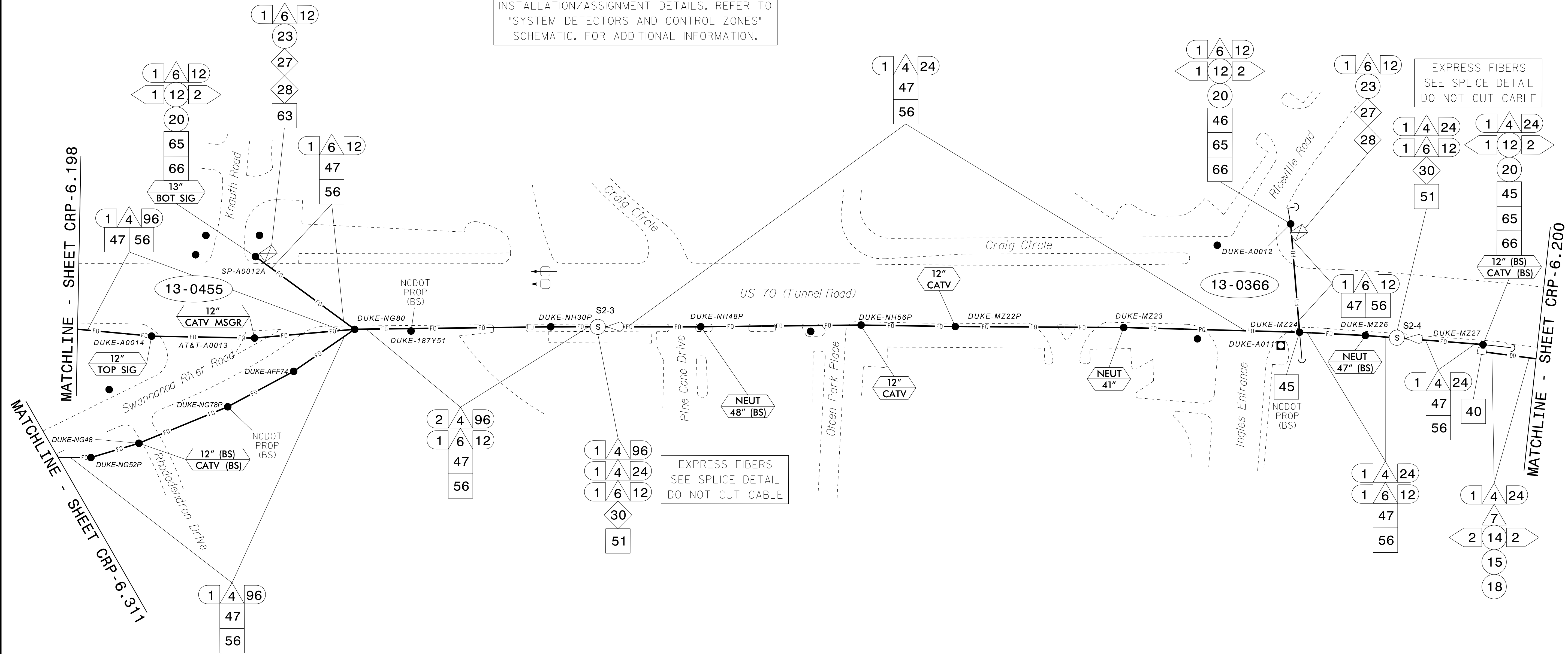
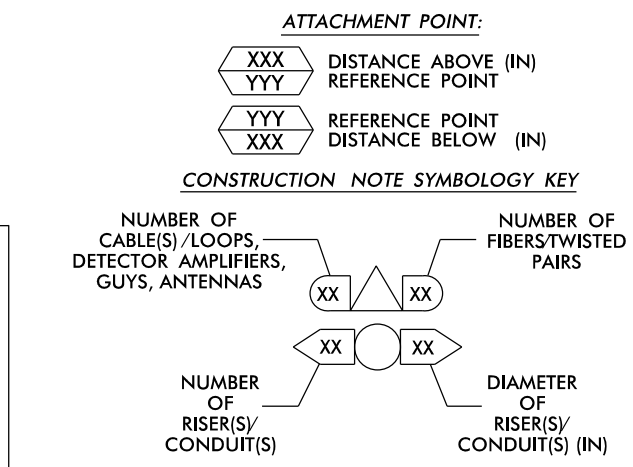


SEE SIGNAL PLAN FOR SYSTEM DETECTOR INSTALLATION/ASSIGNMENT DETAILS. REFER TO "SYSTEM DETECTORS AND CONTROL ZONES" SCHEMATIC. FOR ADDITIONAL INFORMATION.



- NOTES:**
- UNLESS OTHERWISE NOTED:
    - OVERLASH NEW FIBER OPTIC CABLE TO EXISTING COMMUNICATIONS CABLE.
    - ATTACH NEW MESSENGER CABLE 40" BELOW POWER.
    - ATTACH ON FRONT SIDE (FS) OF POLE.
  - SEAL ALL CONDUIT ENDS WITH DUCT AND CONDUIT SEALER, AT ALL JUNCTION BOX / CABINET ENTRANCES.

- |  |   |   |   |   |  |  |
|--|---|---|---|---|--|--|
| 1 INSTALL COMPOSITE CCTV CABLE                                   | 13 INSTALL HEAT SHRINK TUBING RETROFIT KIT  | 25 INSTALL NEW RISER INTO POLE MOUNTED CABINET  | 37 INSTALL CCTV WOOD POLE                                   | 49 REMOVE EXISTING COMMUNICATIONS CABLE   | 60A INSTALL NEW POLE MOUNTED CABINET FOR ANTENNA (RADIO CABINET) | 72 INSTALL 900 MHZ RADIO WITH PANEL ANTENNA        |
| 2 INSTALL LOW VOLTAGE POWER CABLE (24VAC)                        | 14 INSTALL HIGH DENSITY POLYETHYLENE CONDUIT                                      | 26 INSTALL DIGITAL VIDEO ENCODER  | 38 INSTALL STANDARD SIZE JUNCTION BOX                       | 50 INSTALL WIRELESS DSL   | 61 REMOVE EXISTING CCTV CAMERA ASSEMBLY                          | 73 INSTALL 2.4 GHZ ETHERNET RADIO AND YAGI ANTENNA |
| 3 INSTALL CATEGORY 5E CABLE                                      | 15 DIRECTIONAL DRILL CONDUIT  | 27 INSTALL NEW ETHERNET EDGE SWITCH IN CABINET  | 39 INSTALL SPECIAL-SIZED JUNCTION BOX                       | 51 INSTALL CABLE STORAGE GUIDE(S) [SNOW SHOE(S)] AND STORE 100 FEET OF EACH CABLE | 62 NEW CABINET ENTRANCE INTO NEW FOUNDATION                      | 74 INSTALL 2.4 GHZ ETHERNET RADIO                  |
| 4 INSTALL SMFO CABLE   | 16 BORE AND JACK CONDUIT  | 28 INSTALL INTERCONNECT CENTER, PATCH PANEL, JUMPERS, AND FUSION SPICE CABLE IN CABINET | 40 INSTALL OVER-SIZED JUNCTION BOX                          | 52 INSTALL DELINEATOR MARKER  | 63 DRILLCORE DRILL EXISTING FOUNDATION                           | 75 INSTALL OMNI ANTENNA                            |
| 5 INSTALL COAXIAL ANTENNA CABLE                                  | 17 INSTALL CABLE(S) IN EXISTING CONDUIT   | 29 INSTALL UNDERGROUND SPICE ENCLOSURE  | 41 REMOVE EXISTING JUNCTION BOX                             | 53 STORE 50 FEET OF COMMUNICATIONS CABLE (EACH CABLE)                             | 64 INTERCEPT AND REROUTE EXISTING CONDUITS                       | 76 INSTALL 900 MHZ ETHERNET RADIO                  |
| 6 INSTALL FIBER-OPTIC DROP CABLE                                 | 18 INSTALL CABLE(S) IN NEW CONDUIT  | 30 INSTALL AERIAL SPICE ENCLOSURE   | 42 INSTALL WOOD POLE  | 54 LASH CABLE(S) TO EXISTING SIGNAL/COMMUNICATIONS CABLE                          | 65 BOND MESSENGER TO POLE GROUND                                 | 77 INSTALL CCTV METAL POLE                         |
| 7 INSTALL TRACER WIRE  | 19 INSTALL CABLE(S) IN EXISTING RISER(S)  | 31 INSTALL SPICE CABINET  | 43 REMOVE EXISTING WOOD POLE                                | 55 LASH CABLE(S) TO EXISTING MESSENGER CABLE                                      | 66 BOND RISER TO POLE GROUND                                     | 78 REMOVE WIRELESS COMMUNICATIONS EQUIPMENT        |
| 8 INSTALL CONDUIT UNDERGROUND                                    | 20 INSTALL CABLE(S) IN NEW RISER(S)   | 32 MODIFY EXISTING SPICE ENCLOSURE OR INTERCONNECT CENTER                               | 44 INSTALL AERIAL GUY ASSEMBLY                              | 56 LASH CABLE(S) TO NEW MESSENGER CABLE   | 67 BOND TRACER WIRE TO EQUIPMENT GROUND BUS                      | 79 INSTALL CELLULAR MODEM                          |
| 9 INSTALL PVC CONDUIT  | 21 INSTALL CABLE(S) IN EXISTING CABINET ENTRANCE                                  | 33 REMOVE EXISTING SPICE / HUB / CCTV CABINET   | 45 INSTALL STANDARD GUY ASSEMBLY                            | 57 MODIFY EXISTING ELECTRICAL SERVICE FOR CCTV                                    | 68 BOND TRACER WIRE TO POLE GROUND                               | 80 INSTALL YAGI ANTENNA                            |
| 10 INSTALL RIGID, GALVANIZED STEEL CONDUIT                       | 22 INSTALL NEW CONDUIT INTO CABINET BASE (USE EX CABINET ENTRANCE WHEN AVAILABLE) | 34 INSTALL CABINET FOUNDATION   | 46 INSTALL SIDEWALK GUY ASSEMBLY                            | 58 INSTALL NEW ELECTRICAL SERVICE FOR CCTV OR RADIO                               | 69 HANDLASH AND INSTALL AERIAL CABLE PROTECTOR                   |  |
| 11 INSTALL RIGID, GALVANIZED STEEL RISER WITH WEATHERHEAD        | 23 INSTALL NEW RISER INTO CABINET BASE (USE EX CABINET ENTRANCE WHEN AVAILABLE)   | 35 REMOVE EXISTING CABINET FOUNDATION   | 47 INSTALL MESSENGER CABLE                                  | 59 INSTALL NEW POLE MOUNTED CCTV CABINET (336)                                    | 70 INSTALL HUB CABINET   |  |
| 12 INSTALL RIGID, GALVANIZED STEEL RISER WITH HEAT SHRINK TUBING | 24 INSTALL NEW CONDUIT INTO POLE MOUNTED CABINET                                  | 36 INSTALL CCTV CAMERA ASSEMBLY   | 48 REMOVE EXISTING COMMUNICATIONS CABLE AND MESSENGER CABLE | 60 INSTALL NEW POLE MOUNTED CCTV CABINET (NEWA TYPE 4)                            | 71 INSTALL MANAGED ETHERNET SWITCH                               |  |



**ATKINS**

1616 EAST MILLBROOK ROAD, SUITE 160  
RALEIGH, NORTH CAROLINA 27609  
(919) 876-6888 NCBEEES #F-0326

**DOCUMENT NOT CONSIDERED FINAL UNLESS ALL SIGNATURES COMPLETED**

**NC**

*Transportation*

750 Greenfield Parkway, Garner, NC 27529

SCALE: 1"=50'

**Asheville Signal System  
Cable Routing Plans**

Division 13 Buncombe County Asheville

PLAN DATE: December 2016 REVIEWED BY: M B Toth

PREPARED BY: J A Wiles REVIEWED BY:

REVISIONS	INIT.	DATE

SEAL

CADD File name: CL\_199.dgn

DATE: 12/15/2016

DATE:

15-DEC-2016, 14:08 O:\projects\atkins\proj\crp\tr\off\c\ur\100048632 U-4715B Asheville\110 Sig Sys\Task 11\_CL\_199.dgn AT: DUS300019 WLE2054