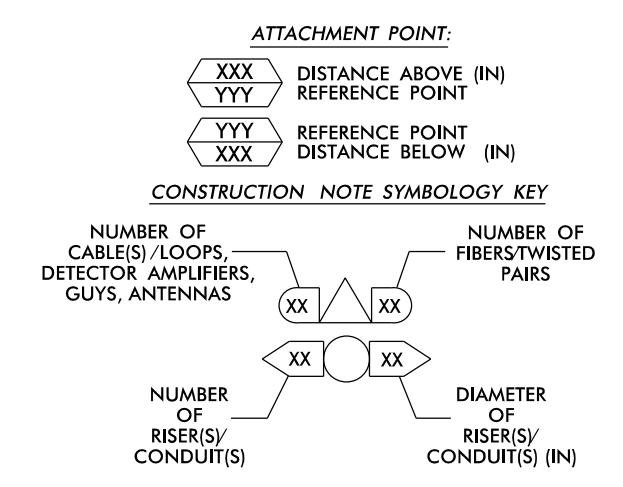


NOTES:
1. UNLESS OTHERWISE NOTED:
- OVERLASH NEW FIBER OPTIC CABLE TO EXISTING COMMUNICATIONS CABLE.
- ATTACH NEW MESSENGER CABLE 40" BELOW POWER.
- ATTACH ON FRONT SIDE (FS) OF POLE.
2. SEAL ALL CONDUIT ENDS WITH DUCT AND CONDUIT SEALER, AT ALL JUNCTION BOX / CABINET ENTRANCES.

Table with 4 columns of callout numbers and descriptions for various cable and equipment installation tasks, such as 'INSTALL COMPOSITE CCTV CABLE', 'INSTALL HEAT SHRINK TUBING', 'INSTALL WIRELESS DSL', etc.



ATKINS 1616 EAST MILLBROOK ROAD, SUITE 160 RALEIGH, NORTH CAROLINA 27609 (919) 876-6888 NCBEES #F-0326

Project information block including the Atkins logo, project name 'Asheville Signal System Cable Routing Plans', division '13 Buncombe County Asheville', plan date 'December 2016', and a professional seal for Melissa B. Toth, Engineer.

15-DEC-2016 14:08 D:\projects\atkins\crp\crp6\11\1101155\Asheville\Sig_Sys\Task 11.CL\188.dgn AT: DUS300019