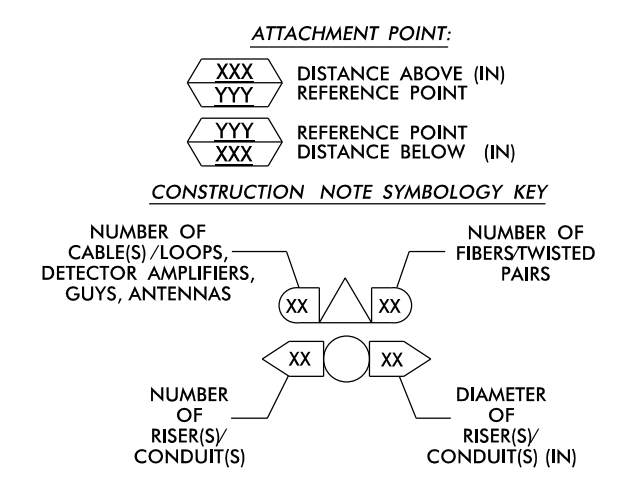


- NOTES:**
- UNLESS OTHERWISE NOTED:
 - OVERLASH NEW FIBER OPTIC CABLE TO EXISTING COMMUNICATIONS CABLE.
 - ATTACH NEW MESSENGER CABLE 40" BELOW POWER.
 - ATTACH ON FRONT SIDE (FS) OF POLE.
 - SEAL ALL CONDUIT ENDS WITH DUCT AND CONDUIT SEALER, AT ALL JUNCTION BOX / CABINET ENTRANCES.

| | | | | | | | | | | | | | |
|----|---|----|--|----|---|----|--|----|--|-----|--|----|---|
| 1 | INSTALL COMPOSITE CCTV CABLE | 13 | INSTALL HEAT SHRINK TUBING RETROFIT KIT | 25 | INSTALL NEW RISER INTO POLE MOUNTED CABINET | 37 | INSTALL CCTV WOOD POLE | 49 | REMOVE EXISTING COMMUNICATIONS CABLE | 60A | INSTALL NEW POLE MOUNTED CABINET FOR ANTENNA (RADIO CABINET) | 72 | INSTALL 900 MHZ RADIO WITH PANEL ANTENNA |
| 2 | INSTALL LOW VOLTAGE POWER CABLE (24VAC) | 14 | INSTALL HIGH DENSITY POLYETHYLENE CONDUIT | 26 | INSTALL DIGITAL VIDEO ENCODER IN CABINET | 38 | INSTALL STANDARD SIZE JUNCTION BOX | 50 | INSTALL WIRELESS DSL | 61 | REMOVE EXISTING CCTV CAMERA ASSEMBLY | 73 | INSTALL 2.4 GHZ ETHERNET RADIO AND YAGI ANTENNA |
| 3 | INSTALL CATEGORY 5E CABLE | 15 | DIRECTIONAL DRILL CONDUIT | 27 | INSTALL NEW ETHERNET EDGE SWITCH IN CABINET | 39 | INSTALL SPECIAL-SIZED JUNCTION BOX | 51 | INSTALL CABLE STORAGE GUIDE(S) [SNOW SHOE(S)] AND STORE 100 FEET OF EACH CABLE | 62 | NEW CABINET ENTRANCE INTO NEW FOUNDATION | 74 | INSTALL 2.4 GHZ ETHERNET RADIO |
| 4 | INSTALL SMFO CABLE | 16 | BORE AND JACK CONDUIT | 28 | INSTALL INTERCONNECT CENTER PATCH PANEL JUMPERS, AND FUSION SPlice CABLE IN CABINET | 40 | INSTALL OVER-SIZED JUNCTION BOX | 52 | INSTALL DELINEATOR MARKER | 63 | DRILL/CORE DRILL EXISTING FOUNDATION | 75 | INSTALL OMNI ANTENNA |
| 5 | INSTALL COAXIAL ANTENNA CABLE | 17 | INSTALL CABLE(S) IN EXISTING CONDUIT | 29 | INSTALL UNDERGROUND SPlice ENCLOSURE | 41 | REMOVE EXISTING JUNCTION BOX | 53 | STORE 50 FEET OF COMMUNICATIONS CABLE (EACH CABLE) | 64 | INTERCEPT AND REROUTE EXISTING CONDUITS | 76 | INSTALL 900 MHZ ETHERNET RADIO |
| 6 | INSTALL FIBER-OPTIC DROP CABLE | 18 | INSTALL CABLE(S) IN NEW CONDUIT | 30 | INSTALL AERIAL SPlice ENCLOSURE | 42 | INSTALL WOOD POLE | 54 | LASH CABLE(S) TO EXISTING SIGNAL/COMMUNICATIONS CABLE | 65 | BOND MESSENGER TO POLE GROUND | 77 | INSTALL CCTV METAL POLE |
| 7 | INSTALL TRACER WIRE | 19 | INSTALL CABLE(S) IN EXISTING RISER(S) | 31 | INSTALL SPlice CABINET | 43 | REMOVE EXISTING WOOD POLE | 55 | LASH CABLE(S) TO EXISTING MESSENGER CABLE | 66 | BOND RISER TO POLE GROUND | 78 | REMOVE WIRELESS COMMUNICATIONS EQUIPMENT |
| 8 | INSTALL CONDUIT UNDERGROUND | 20 | INSTALL CABLE(S) IN NEW RISER(S) | 32 | MODIFY EXISTING SPlice ENCLOSURE OR INTERCONNECT CENTER | 44 | INSTALL AERIAL GUY ASSEMBLY | 56 | LASH CABLE(S) TO NEW MESSENGER CABLE | 67 | BOND TRACER WIRE TO EQUIPMENT GROUND BUS | 79 | INSTALL CELLULAR MODEM |
| 9 | INSTALL PVC CONDUIT | 21 | INSTALL CABLE(S) IN EXISTING CABINET ENTRANCE | 33 | REMOVE EXISTING SPlice / HUB / CCTV CABINET | 45 | INSTALL STANDARD GUY ASSEMBLY | 57 | MODIFY EXISTING ELECTRICAL SERVICE FOR CCTV | 68 | BOND TRACER WIRE TO POLE GROUND | 80 | INSTALL YAGI ANTENNA |
| 10 | INSTALL RIGID, GALVANIZED STEEL CONDUIT | 22 | INSTALL NEW CONDUIT INTO CABINET BASE (USE EX CABINET ENTRANCE WHEN AVAILABLE) | 34 | INSTALL CABINET FOUNDATION | 46 | INSTALL SIDEWALK GUY ASSEMBLY | 58 | INSTALL NEW ELECTRICAL SERVICE FOR CCTV OR RADIO | 69 | HANDLASH AND INSTALL AERIAL CABLE PROTECTOR | | |
| 11 | INSTALL RIGID, GALVANIZED STEEL RISER WITH WEATHERHEAD | 23 | INSTALL NEW RISER INTO CABINET BASE (USE EX CABINET ENTRANCE WHEN AVAILABLE) | 35 | REMOVE EXISTING CABINET FOUNDATION | 47 | INSTALL MESSENGER CABLE | 59 | INSTALL NEW POLE MOUNTED CCTV CABINET (336) | 70 | INSTALL HUB CABINET | | |
| 12 | INSTALL RIGID, GALVANIZED STEEL RISER WITH HEAT SHRINK TUBING | 24 | INSTALL NEW CONDUIT INTO POLE MOUNTED CABINET | 36 | INSTALL CCTV CAMERA ASSEMBLY | 48 | REMOVE EXISTING COMMUNICATIONS CABLE AND MESSENGER CABLE | 60 | INSTALL NEW POLE MOUNTED CCTV CABINET (NEMA TYPE 4) | 71 | INSTALL MANAGED ETHERNET SWITCH | | |



ATKINS 1616 EAST MILLBROOK ROAD, SUITE 160
RALEIGH, NORTH CAROLINA 27609
(919) 876-6888 NCBEEES #F-0326

DOCUMENT NOT CONSIDERED FINAL UNLESS ALL SIGNATURES COMPLETED

Prepared for the Offices of:

NC Transportation

750 Greenfield Parkway, Garner, NC 27529

Asheville Signal System
Cable Routing Plans

Division 13 Buncombe County Asheville

PLAN DATE: December 2016 REVIEWED BY: M B Toth

PREPARED BY: J A Wiles REVIEWED BY:

REVISIONS

INIT. DATE

SEAL
NORTH CAROLINA PROFESSIONAL ENGINEER
MELISSA B. TOTH
025892

12/15/2016

DATE

CDAD File name: CL 137.dgn

15-DEC-2016 14:07 D:\projects\atkins\crp\crp6\crp6.dwg U-4715B Asheville\116 Sig Sys\Task 11.CL.MCL 137.dgn AT DUS300019