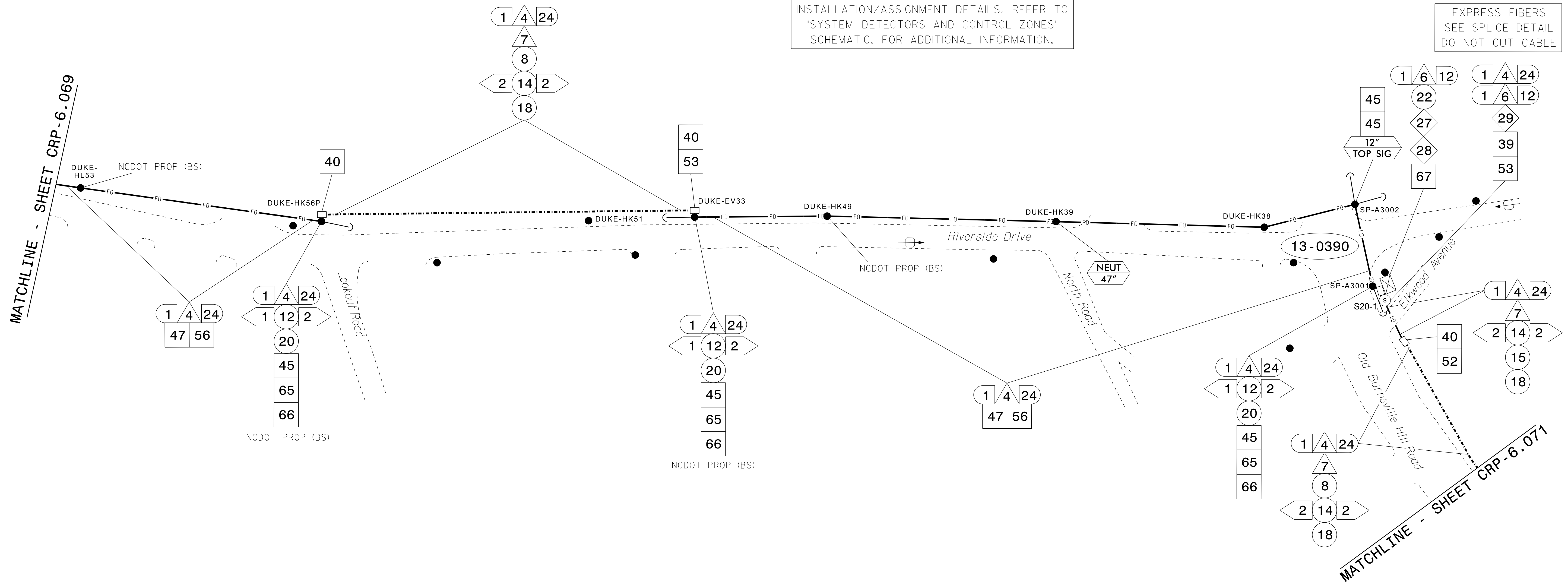


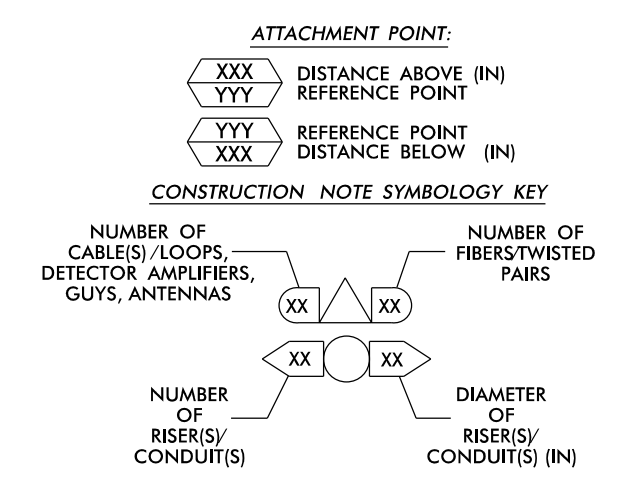
SEE SIGNAL PLAN FOR SYSTEM DETECTOR INSTALLATION/ASSIGNMENT DETAILS. REFER TO "SYSTEM DETECTORS AND CONTROL ZONES" SCHEMATIC. FOR ADDITIONAL INFORMATION.

EXPRESS FIBERS SEE SPLICE DETAIL DO NOT CUT CABLE



- NOTES:
1. UNLESS OTHERWISE NOTED:
- OVERLASH NEW FIBER OPTIC CABLE TO EXISTING COMMUNICATIONS CABLE.
- ATTACH NEW MESSENGER CABLE 40" BELOW POWER.
- ATTACH ON FRONT SIDE (FS) OF POLE.
2. SEAL ALL CONDUIT ENDS WITH DUCT AND CONDUIT SEALER, AT ALL JUNCTION BOX / CABINET ENTRANCES.

Table with 4 columns of numbered callouts (1-80) and their corresponding descriptions for various cable and equipment installation tasks.



ATKINS 1616 EAST MILLBROOK ROAD, SUITE 160 RALEIGH, NORTH CAROLINA 27609 (919) 876-6888 NCBEES #F-0326

Project information block including 'Asheville Signal System Cable Routing Plans', 'Division 13 Buncombe County Asheville', 'Prepared by: J A Wiles', 'Reviewed by: M B Toth', and a professional engineer seal for Melissa B. Toth.

15-DEC-2016 14:05 D:\projects\atkins\crp\crp6\crp6.dwg U-4715B Asheville\110 Sig Sys\Task 11-CL\ACL 070.dgn AT DUS300019