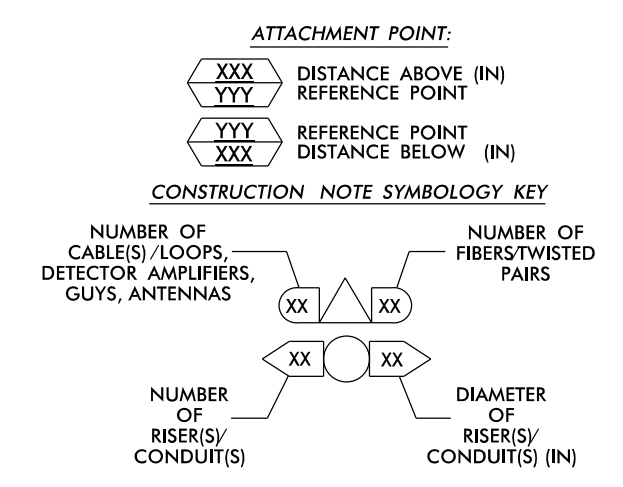


EXPRESS FIBERS  
SEE SPLICE DETAIL  
DO NOT CUT CABLE

- NOTES:**
- UNLESS OTHERWISE NOTED:
    - OVERLASH NEW FIBER OPTIC CABLE TO EXISTING COMMUNICATIONS CABLE.
    - ATTACH NEW MESSENGER CABLE 40" BELOW POWER.
    - ATTACH ON FRONT SIDE (FS) OF POLE.
  - SEAL ALL CONDUIT ENDS WITH DUCT AND CONDUIT SEALER, AT ALL JUNCTION BOX / CABINET ENTRANCES.

|   |  |   |  |  |   |   |
|---|--|---|--|--|---|---|
| 1. INSTALL COMPOSITE CCTV CABLE                                   | 13. INSTALL HEAT SHRINK TUBING RETROFIT KIT  | 25. INSTALL NEW RISER INTO POLE MOUNTED CABINET   | 37. INSTALL CCTV WOOD POLE                                   | 49. REMOVE EXISTING COMMUNICATIONS CABLE   | 60A. INSTALL NEW POLE MOUNTED CABINET FOR ANTENNA (RADIO CABINET) | 72. INSTALL 900 MHZ RADIO WITH PANEL ANTENNA        |
| 2. INSTALL LOW VOLTAGE POWER CABLE (24VAC)                        | 14. INSTALL HIGH DENSITY POLYETHYLENE CONDUIT                                      | 26. INSTALL DIGITAL VIDEO ENCODER IN CABINET  | 38. INSTALL STANDARD SIZE JUNCTION BOX                       | 50. INSTALL WIRELESS DSL   | 61. REMOVE EXISTING CCTV CAMERA ASSEMBLY                          | 73. INSTALL 2.4 GHZ ETHERNET RADIO AND YAGI ANTENNA |
| 3. INSTALL CATEGORY 5E CABLE                                      | 15. DIRECTIONAL DRILL CONDUIT  | 27. INSTALL NEW ETHERNET EDGE SWITCH IN CABINET   | 39. INSTALL SPECIAL-SIZED JUNCTION BOX                       | 51. INSTALL CABLE STORAGE GUIDE(S) [SNOW SHOE(S)] AND STORE 100 FEET OF EACH CABLE | 62. NEW CABINET ENTRANCE INTO NEW FOUNDATION                      | 74. INSTALL 2.4 GHZ ETHERNET RADIO                  |
| 4. INSTALL SMFO CABLE   | 16. BORE AND JACK CONDUIT  | 28. INSTALL INTERCONNECT CENTER PATCH PANEL JUMPERS, AND FUSION SPLICE CABLE IN CABINET | 40. INSTALL OVER-SIZED JUNCTION BOX                          | 52. INSTALL DELINEATOR MARKER  | 63. DRILL/CORE DRILL EXISTING FOUNDATION                          | 75. INSTALL OMNI ANTENNA                            |
| 5. INSTALL COAXIAL ANTENNA CABLE                                  | 17. INSTALL CABLE(S) IN EXISTING CONDUIT   | 29. INSTALL UNDERGROUND SPLICE ENCLOSURE  | 41. REMOVE EXISTING JUNCTION BOX                             | 53. STORE 50 FEET OF COMMUNICATIONS CABLE (EACH CABLE)                             | 64. INTERCEPT AND REROUTE EXISTING CONDUITS                       | 76. INSTALL 900 MHZ ETHERNET RADIO                  |
| 6. INSTALL FIBER-OPTIC DROP CABLE                                 | 18. INSTALL CABLE(S) IN NEW CONDUIT  | 30. INSTALL AERIAL SPLICE ENCLOSURE   | 42. INSTALL WOOD POLE  | 54. LASH CABLE(S) TO EXISTING SIGNAL/COMMUNICATIONS CABLE                          | 65. BOND MESSENGER TO POLE GROUND                                 | 77. INSTALL CCTV METAL POLE                         |
| 7. INSTALL TRACER WIRE  | 19. INSTALL CABLE(S) IN EXISTING RISER(S)  | 31. INSTALL SPLICE CABINET  | 43. REMOVE EXISTING WOOD POLE                                | 55. LASH CABLE(S) TO EXISTING MESSENGER CABLE                                      | 66. BOND RISER TO POLE GROUND                                     | 78. REMOVE WIRELESS COMMUNICATIONS EQUIPMENT        |
| 8. INSTALL CONDUIT UNDERGROUND                                    | 20. INSTALL CABLE(S) IN NEW RISER(S)   | 32. MODIFY EXISTING SPLICE ENCLOSURE OR INTERCONNECT CENTER                             | 44. INSTALL AERIAL GUY ASSEMBLY                              | 56. LASH CABLE(S) TO NEW MESSENGER CABLE   | 67. BOND TRACER WIRE TO EQUIPMENT GROUND BUS                      | 79. INSTALL CELLULAR MODEM                          |
| 9. INSTALL PVC CONDUIT  | 21. INSTALL CABLE(S) IN EXISTING CABINET ENTRANCE                                  | 33. REMOVE EXISTING SPLICE / HUB / CCTV CABINET   | 45. INSTALL STANDARD GUY ASSEMBLY                            | 57. MODIFY EXISTING ELECTRICAL SERVICE FOR CCTV                                    | 68. BOND TRACER WIRE TO POLE GROUND                               | 80. INSTALL YAGI ANTENNA                            |
| 10. INSTALL RIGID, GALVANIZED STEEL CONDUIT                       | 22. INSTALL NEW CONDUIT INTO CABINET BASE (USE EX CABINET ENTRANCE WHEN AVAILABLE) | 34. INSTALL CABINET FOUNDATION  | 46. INSTALL SIDEWALK GUY ASSEMBLY                            | 58. INSTALL NEW ELECTRICAL SERVICE FOR CCTV OR RADIO                               | 69. HANDLASH AND INSTALL AERIAL CABLE PROTECTOR                   |   |
| 11. INSTALL RIGID, GALVANIZED STEEL RISER WITH WEATHERHEAD        | 23. INSTALL NEW RISER INTO CABINET BASE (USE EX CABINET ENTRANCE WHEN AVAILABLE)   | 35. REMOVE EXISTING CABINET FOUNDATION  | 47. INSTALL MESSENGER CABLE                                  | 59. INSTALL NEW POLE MOUNTED CCTV CABINET (336)                                    | 70. INSTALL HUB CABINET   |   |
| 12. INSTALL RIGID, GALVANIZED STEEL RISER WITH HEAT SHRINK TUBING | 24. INSTALL NEW CONDUIT INTO POLE MOUNTED CABINET                                  | 36. INSTALL CCTV CAMERA ASSEMBLY  | 48. REMOVE EXISTING COMMUNICATIONS CABLE AND MESSENGER CABLE | 60. INSTALL NEW POLE MOUNTED CCTV CABINET (NEMA TYPE 4)                            | 71. INSTALL MANAGED ETHERNET SWITCH                               |   |



**ATKINS** 1616 EAST MILLBROOK ROAD, SUITE 160  
 RALEIGH, NORTH CAROLINA 27609  
 (919) 876-6888 NCBEES #F-0326

**DOCUMENT NOT CONSIDERED FINAL UNLESS ALL SIGNATURES COMPLETED**

Prepared for the Offices of:

**NC** Transportation

750 Greenfield Parkway, Garner, NC 27529

Asheville Signal System  
Cable Routing Plans

Division 13 Buncombe County Asheville

PLAN DATE: December 2016 REVIEWED BY: M B Toth

PREPARED BY: J A Wiles REVIEWED BY:

REVISIONS

INIT. DATE

12/15/2016

Melissa B. Toth

CADD File name: CL\_066.dgn

15-DEC-2016 14:05  
 D:\Projects\2016\11-4715B Asheville\11-4715B Asheville\11-4715B Asheville\Task 11-CL-ACL 066.dgn  
 W:\LE2054 AT DUS300019