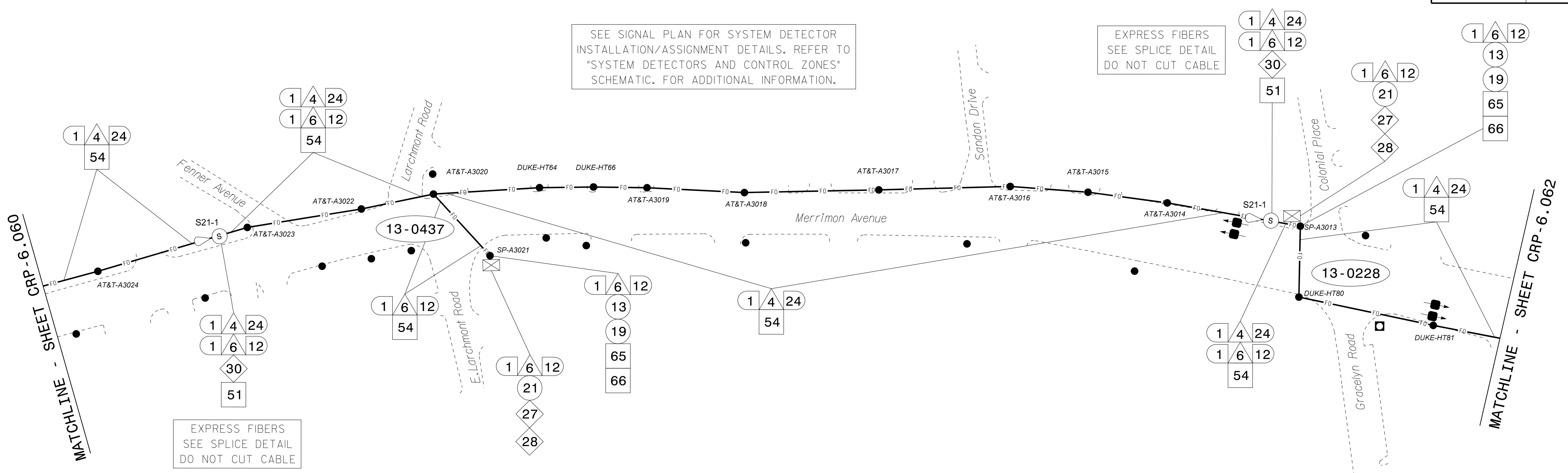


SEE SIGNAL PLAN FOR SYSTEM DETECTOR INSTALLATION/ASSIGNMENT DETAILS. REFER TO "SYSTEM DETECTORS AND CONTROL ZONES" SCHEMATIC FOR ADDITIONAL INFORMATION.

EXPRESS FIBERS SEE SPLICE DETAIL DO NOT CUT CABLE

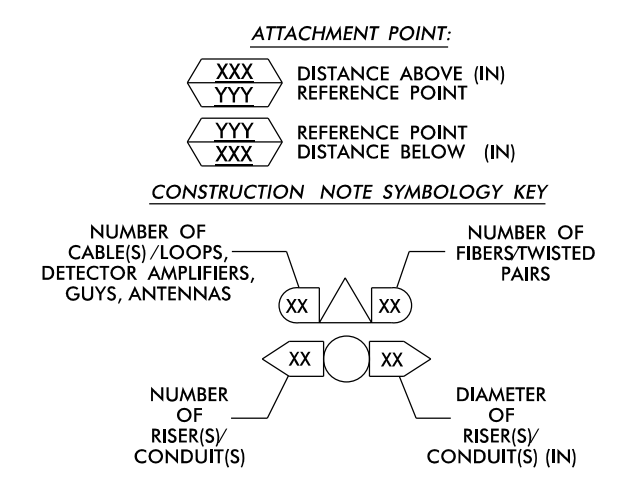


EXPRESS FIBERS SEE SPLICE DETAIL DO NOT CUT CABLE

NOTES:

- 1. UNLESS OTHERWISE NOTED:
- OVERLASH NEW FIBER OPTIC CABLE TO EXISTING COMMUNICATIONS CABLE.
- ATTACH NEW MESSENGER CABLE 40" BELOW POWER.
- ATTACH ON FRONT SIDE (FS) OF POLE.
2. SEAL ALL CONDUIT ENDS WITH DUCT AND CONDUIT SEALER, AT ALL JUNCTION BOX / CABINET ENTRANCES.

Table with 8 columns and 12 rows of notes detailing installation and maintenance tasks such as 'INSTALL COMPOSITE CCTV CABLE', 'INSTALL HEAT SHRINK TUBING', 'INSTALL NEW RISER INTO POLE MOUNTED CABINET', etc.



ATKINS 1616 EAST MILLBROOK ROAD, SUITE 160 RALEIGH, NORTH CAROLINA 27609 (919) 876-6888 NCBEES #F-0326

DOCUMENT NOT CONSIDERED FINAL UNLESS ALL SIGNATURES COMPLETED

Project information block including 'Asheville Signal System Cable Routing Plans', 'Division 13 Buncombe County Asheville', 'Prepared by: J A Wiles', 'Reviewed by: M B Toth', and a professional seal for Melissa B. Toth, Engineer.

15-DEC-2016 14:05 D:\projects\atkins\crp\11-01-15B\_Ashveville\Sig\_Sys\Task 11-CL-ACL\_061.dgn AT-DUS300019 WLE2054