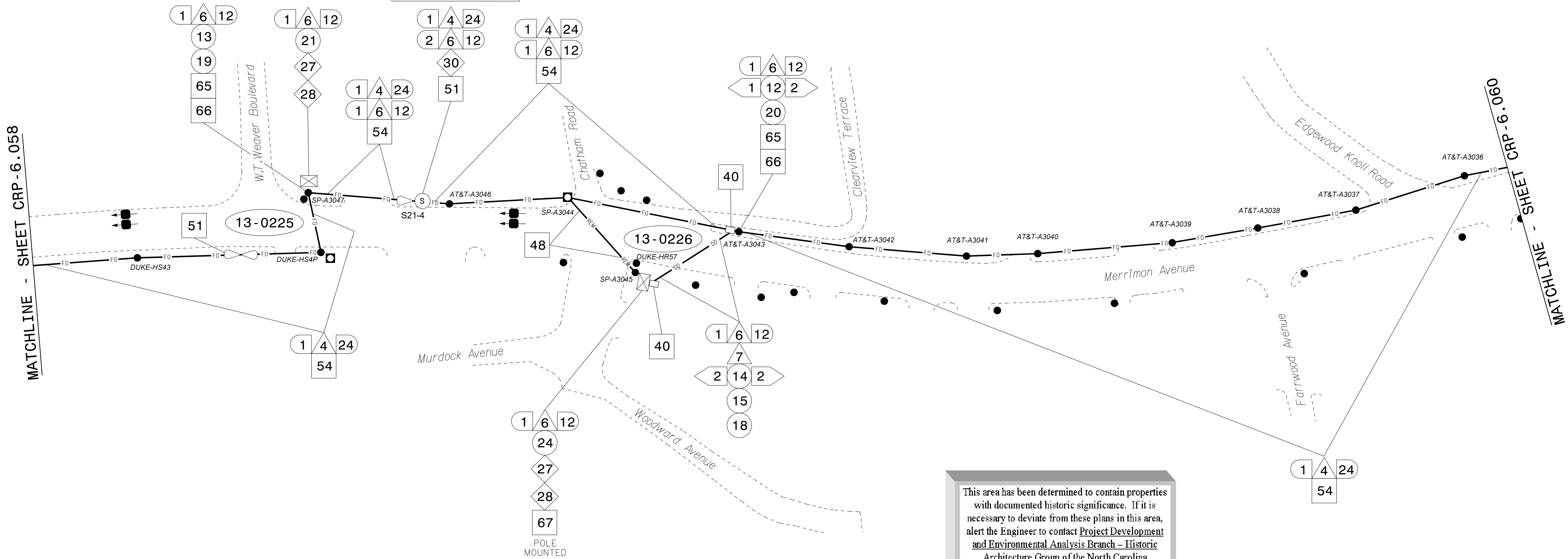


SEE SIGNAL PLAN FOR SYSTEM DETECTOR INSTALLATION/ASSIGNMENT DETAILS. REFER TO "SYSTEM DETECTORS AND CONTROL ZONES" SCHEMATIC. FOR ADDITIONAL INFORMATION.

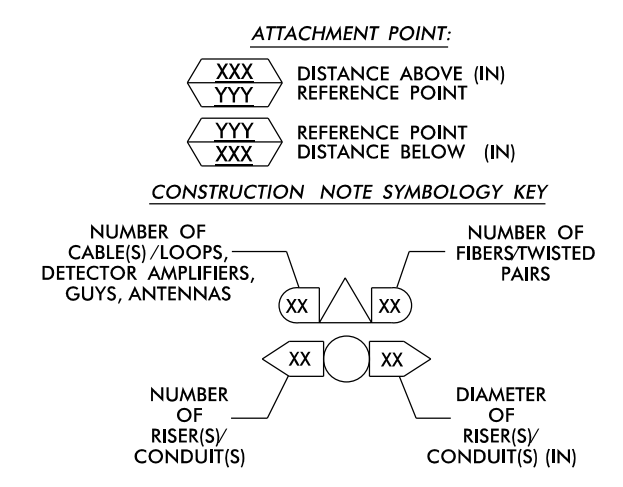
EXPRESS FIBERS SEE SPICE DETAIL DO NOT CUT CABLE



This area has been determined to contain properties with documented historic significance. If it is necessary to deviate from these plans in this area, alert the Engineer to contact Project Development and Environmental Analysis Branch - Historic Architecture Group of the North Carolina Department of Transportation for an effects determination before proceeding.

- NOTES:
1. UNLESS OTHERWISE NOTED:
- OVERLASH NEW FIBER OPTIC CABLE TO EXISTING COMMUNICATIONS CABLE.
- ATTACH NEW MESSENGER CABLE 40" BELOW POWER.
- ATTACH ON FRONT SIDE (FS) OF POLE.
2. SEAL ALL CONDUIT ENDS WITH DUCT AND CONDUIT SEALER, AT ALL JUNCTION BOX / CABINET ENTRANCES.

Table with 4 columns of numbered callouts (1-80) and their corresponding descriptions for cable installation, equipment, and materials.



ATKINS 1616 EAST MILLBROOK ROAD, SUITE 160 RALEIGH, NORTH CAROLINA 27609 (919) 876-6888 NCBEEES #F-0326

Project information block including the title 'Asheville Signal System Cable Routing Plans', division '13 Buncombe County Asheville', plan date 'December 2016', and a professional seal for Melissa B. Toth, Engineer.

21-DEC-2016 16:03 G:\projects\atkins\crp\crp6\crp6.dwg U-4715B Asheville\110 Sigs System\Task 11_C1.dwg 059.dgn AT-DUS300019