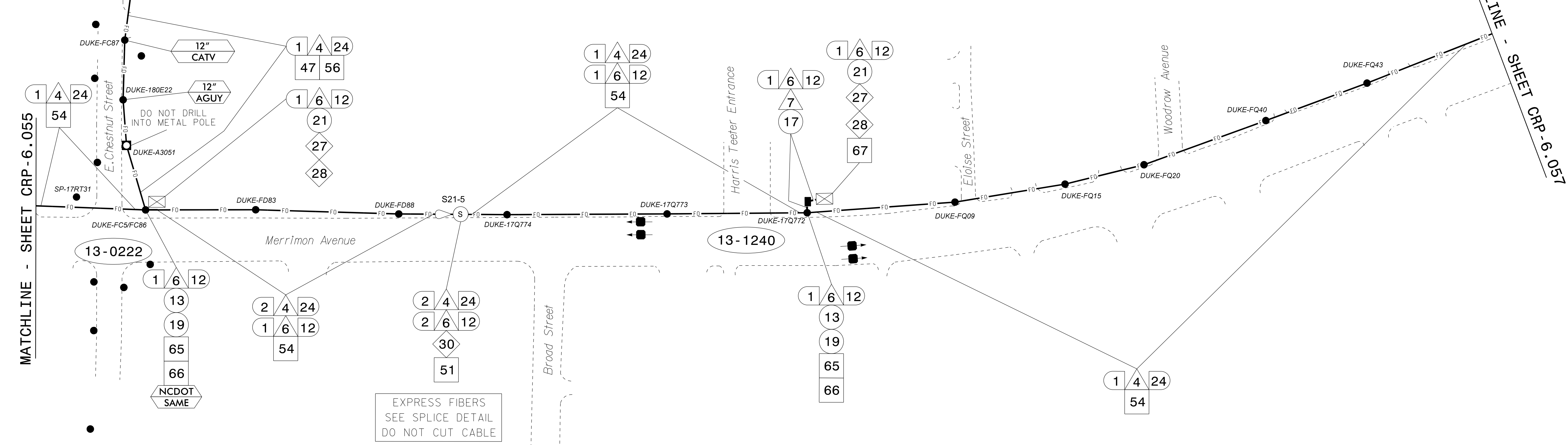


SEE SIGNAL PLAN FOR SYSTEM DETECTOR INSTALLATION/ASSIGNMENT DETAILS. REFER TO "SYSTEM DETECTORS AND CONTROL ZONES" SCHEMATIC. FOR ADDITIONAL INFORMATION.

MATCHLINE SHEET CRP-6.063



MATCHLINE - SHEET CRP-6.055

MATCHLINE - SHEET CRP-6.057

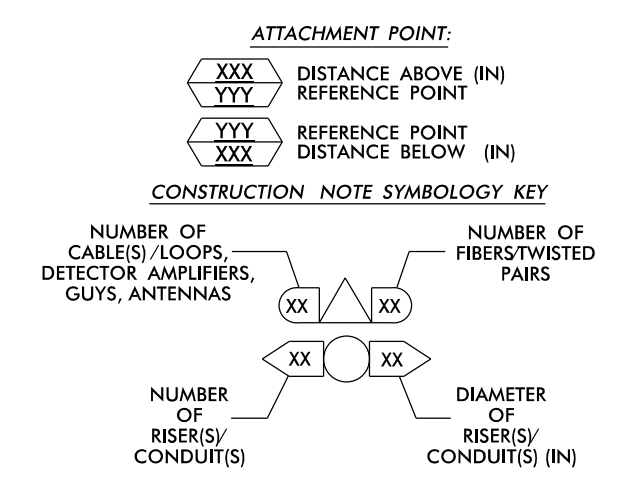
EXPRESS FIBERS SEE SPLICE DETAIL DO NOT CUT CABLE

This area has been determined to contain properties with documented historic significance. If it is necessary to deviate from these plans in this area, alert the Engineer to contact Project Development and Environmental Analysis Branch - Historic Architecture Group of the North Carolina Department of Transportation for an effects determination before proceeding.

NOTES:

- 1. UNLESS OTHERWISE NOTED: - OVERLASH NEW FIBER OPTIC CABLE TO EXISTING COMMUNICATIONS CABLE. - ATTACH NEW MESSENGER CABLE 40" BELOW POWER. - ATTACH ON FRONT SIDE (FS) OF POLE. 2. SEAL ALL CONDUIT ENDS WITH DUCT AND CONDUIT SEALER, AT ALL JUNCTION BOX / CABINET ENTRANCES.

Table with 12 columns and 12 rows of numbered callouts (1-60) and their corresponding installation instructions for various cable types, conduits, cabinets, and equipment.



ATKINS 1616 EAST MILLBROOK ROAD, SUITE 160 RALEIGH, NORTH CAROLINA 27609 (919) 876-6888 NCBEEES #F-0326

Project information block including the title 'Asheville Signal System Cable Routing Plans', division '13 Buncombe County Asheville', plan date 'December 2016', and a signature block for Melissa B. Toth.

21-DEC-2016 16:03 C:\ncs\p\atkins\proj\crp\crp-6\crp-6.056.dgn