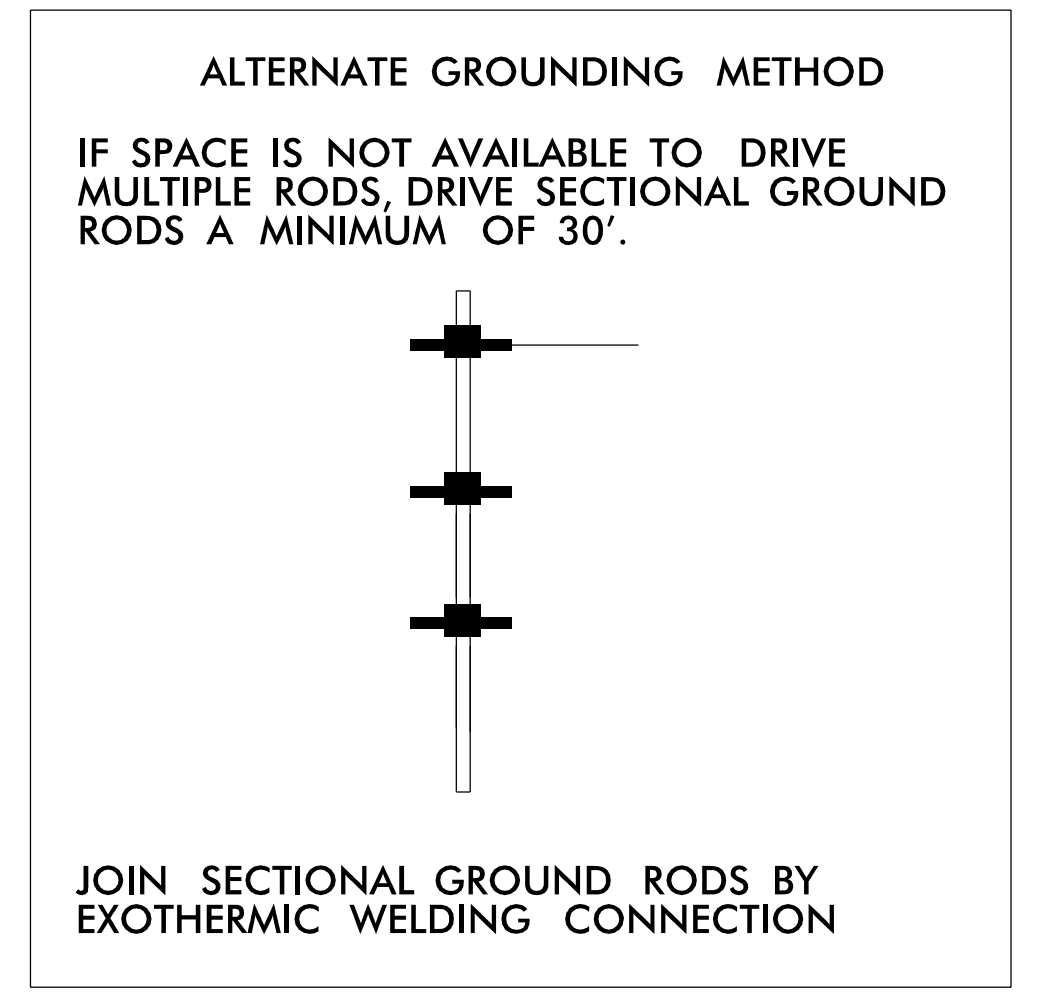
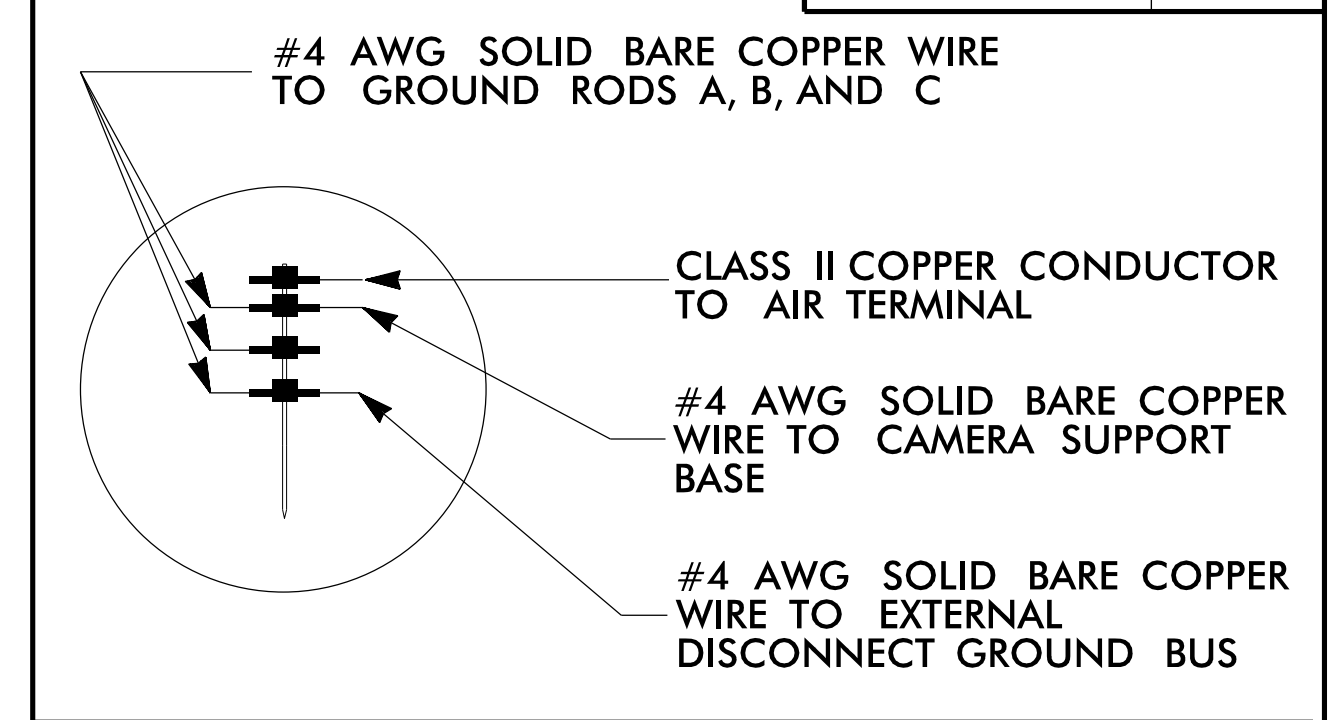
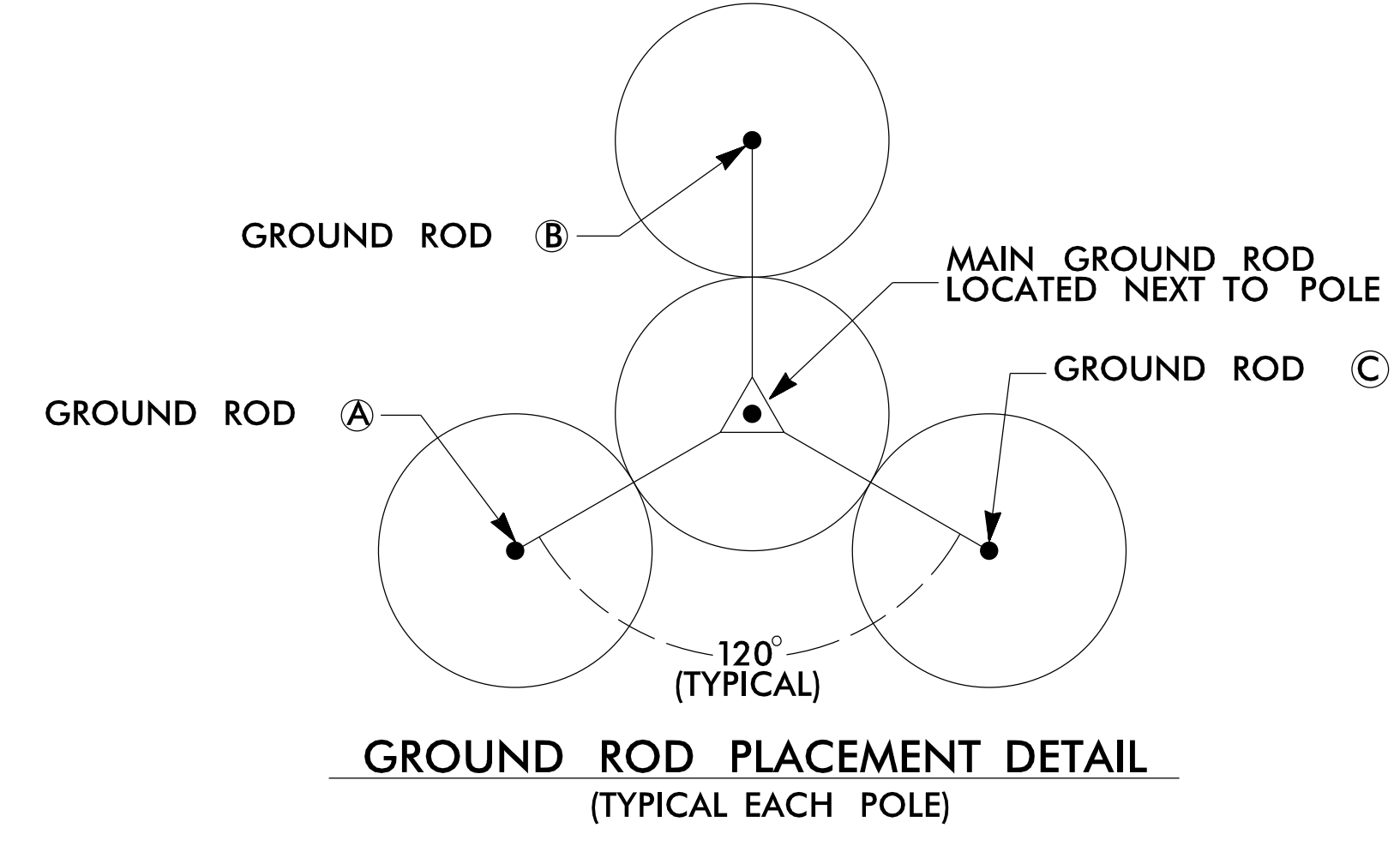


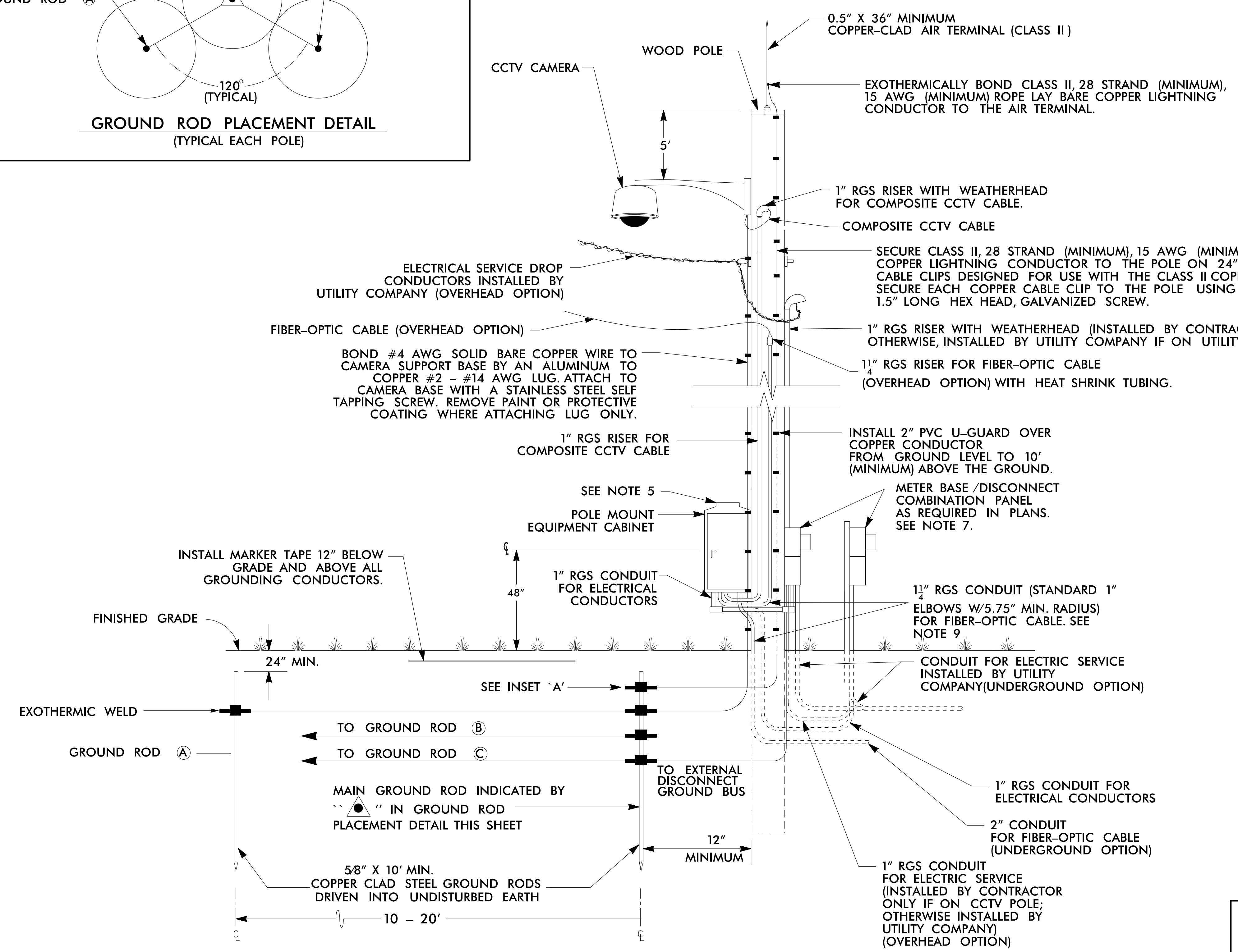
INSET 'A'



10' RADIUS EACH "SPHERE OF INFLUENCE"



NOTE: ENTRY HEIGHT MAY VARY WITH ATTACHMENT HEIGHT OF CABLES.



NOTES

1. BOND CLASS II, 28 STRAND (MINIMUM), 15 AWG (MINIMUM) ROPE-LAY BARE COPPER CONDUCTOR TO THE MAIN GROUND ROD BY AN EXOTHERMIC WELD METHOD. MAINTAIN MAXIMUM HORIZONTAL SEPARATION BETWEEN COPPER CONDUCTOR AND RISER.
2. EXOTHERMICALLY WELD ALL CONNECTIONS TO GROUND RODS.
3. THE CONTRACTOR MAY, UPON APPROVAL OF THE ENGINEER, INSTALL A 30' SECTIONAL GROUND ROD FOR INSTANCES WHEN CONDITIONS WILL NOT ALLOW FOR THE INSTALLATION OF THE 3 - RADIAL GROUND RODS.
4. INSTALL MARKER TAPE DIRECTLY ABOVE ALL GROUNDING ELECTRODES AND CONDUCTORS AT A DEPTH OF 12".
5. REMOVE BONDING JUMPER BETWEEN EQUIPMENT CABINET GROUND BUS AND NEUTRAL BUS.
6. REPLACE RISERS WHERE CALLED FOR IN PLANS.
7. USE PEDESTAL MOUNT METER/DISCONNECT OPTION AT LOCATIONS WHERE NEW POWER SERVICE IS PROVIDED. USE EXISTING POLE MOUNTED METER/DISCONNECT AT LOCATIONS WITH EXISTING POWER SERVICE.
8. INSTALL AIR TERMINAL ONLY ON PROPOSED CCTV POLE INSTALLATIONS.
9. FOR PROPOSED RISERS, INSTALL ONE WEEPHOLE IN EACH ELBOW OF 1 1/4" RISER FOR SMFO CABLE. (SEE SPECIAL PROVISIONS FOR SPECIAL REQUIREMENTS).

**ATKINS** 1616 EAST MILLBROOK ROAD, SUITE 160  
 RALEIGH, NORTH CAROLINA 27609  
 (919) 876-6888 NCBES #F-0326

DOCUMENT NOT CONSIDERED FINAL UNLESS ALL SIGNATURES COMPLETED

<p>Transportation</p> <p>750 Greenfield Parkway, Garner, NC 27529</p>	<p>Asheville Signal System CCTV Camera Installation, Wood Poles</p>		
	<p>Division 13 Buncombe County Asheville</p> <p>PLAN DATE: December 2016 REVIEWED BY: M B Toth</p> <p>PREPARED BY: B J Slocum REVIEWED BY: J T Brooks</p>	<p>SCALE</p> <p>N.T.S.</p>	

21-DEC-2016 14:14  
 C:\Users\p100048632\OneDrive\Work\Projects\11\_Typ\_SDW\incl\_Microstation\Files\_Renamed\Volume 1 - Part 1 14270\_030\_U-4715B\_ITS-5.00.dgn  
 AT LUS355195