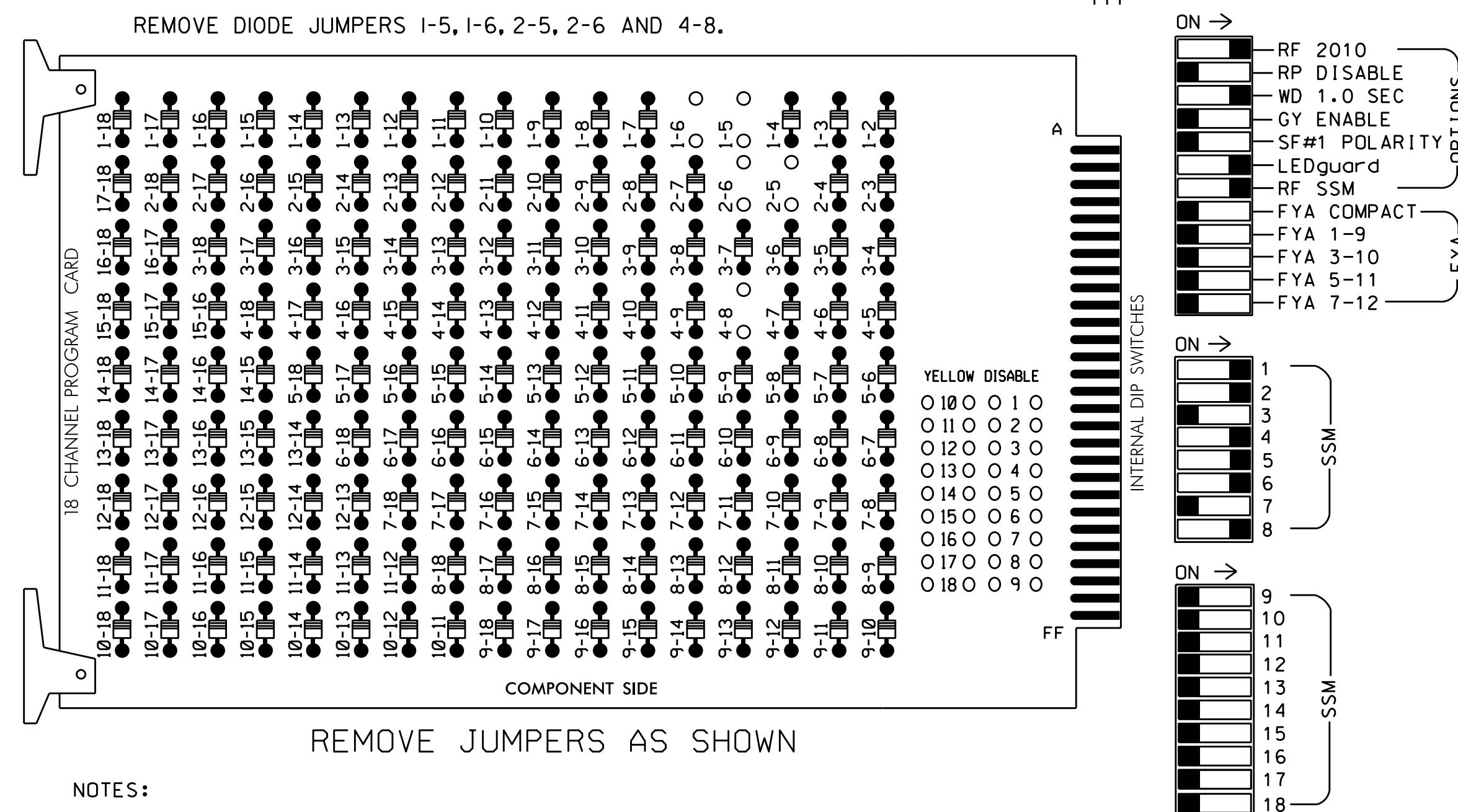


EDI MODEL 2018ECLIP-NC CONFLICT MONITOR
PROGRAMMING DETAIL

(remove jumpers and set switches as shown)



NOTES:

- Card is provided with all diode jumpers in place. Removal of any jumper allows its channels to run concurrently.
- Ensure jumpers SEL2-SEL5 and SEL9 are present on the monitor board.
- Ensure that Red Enable is active at all times during normal operation.
- Integrate monitor with Ethernet network in cabinet.

NOTES

- To prevent "flash-conflict" problems, insert red flash program blocks for all unused vehicle load switches in the output file. The installer shall verify that signal heads flash in accordance with the Signal Plans.
- Program phases 4 and 8 for Dual Entry.
- Enable Simultaneous Gap-Out for all phases.
- Program phases 2 and 6 for Variable Initial and Gap Reduction.
- Program phases 2 and 6 for Start Up In Green.
- Program phases 2 and 6 for Yellow Flash.
- The cabinet and controller are part of the Asheville Signal System.

EQUIPMENT INFORMATION

CONTROLLER.....2070E
 CABINET.....332 W/ AUX
 SOFTWARE.....ECONOLITE OASIS
 CABINET MOUNT.....BASE
 OUTPUT FILE POSITIONS...18 WITH AUX, OUTPUT FILE
 LOAD SWITCHES USED.....S1,S2,S5,S7,S8,S11
 PHASES USED.....1,2,4,5,6,8
 OVERLAPS.....NONE

SIGNAL HEAD HOOK-UP CHART

LOAD SWITCH NO.	S1	S2	S3	S4	S5	S6	S7	S8	S9	S10	S11	S12	AUX S1	AUX S2	AUX S3	AUX S4	AUX S5	AUX S6
CMU CHANNEL NO.	1	2	13	3	4	14	5	6	15	7	8	16	9	10	17	11	12	18
PHASE	1	2	2 PED	3	4	4 PED	5	6	6 PED	7	8	8 PED	OLA	OLB	OLE	OLC	OLD	OLF
SIGNAL HEAD NO.	61,82	21,22	NU	NU	41,42,43	NU	21	61,62	NU	NU	81,82	NU	NU	NU	NU	NU	NU	NU
RED	*	128			101		*	134			107							
YELLOW		129			102			135			108							
GREEN		130			103			136			109							
RED ARROW																		
YELLOW ARROW	126							132										
GREEN ARROW	127							133										

NU = Not Used

* Denotes install load resistor. See load resistor installation detail this sheet.

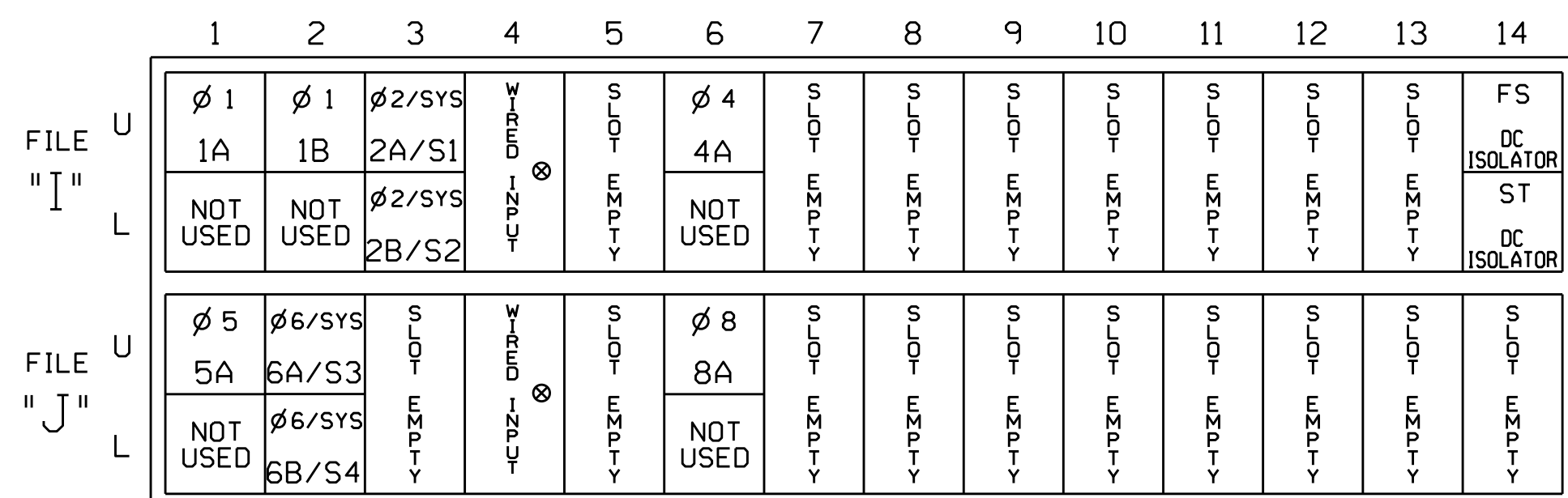
BACKUP PROTECTION NOTE

(program controller as shown below)

From Main Menu press '2' (Phase Control), then '1' (Phase Control Functions). Program phases 2 and 6 for 'Backup Protect'. Make sure the Red Revert times shown on the Signal Design Plans are programmed in the 'Phase Timing' menu.

INPUT FILE POSITION LAYOUT

(front view)



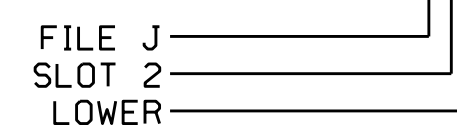
INPUT FILE CONNECTION & PROGRAMMING CHART

LOOP NO.	LOOP TERMINAL	INPUT FILE POS.	PIN NO.	INPUT ASSIGNMENT NO.	DETECTOR NO.	NEMA PHASE	CALL	EXTEND	FULL TIME DELAY	STRETCH TIME	DELAY TIME
1A ¹	TB2-1,2	I1U	56	18	1	1	Y	Y			15
	-	J4U	48	10	26	6	Y	Y	Y		3
1B	TB2-5,6	I2U	39	1	2	1	Y	Y			15
	2A/S1	TB2-9,10	I3U	63	25	2/SYS	Y	Y			
2B/S2	TB2-11,12	I3L	76	38	42	2/SYS	Y	Y			
	4A	TB4-9,10	I6U	41	3	4	Y	Y			5
5A ²	TB3-1,2	J1U	55	17	5	5	Y	Y			15
	-	I4U	47	9	22	2	Y	Y	Y		3
6A/S3	TB3-5,6	J2U	40	2	6	6/SYS	Y	Y			
6B/S4	TB3-7,8	J2L	44	6	16	6/SYS	Y	Y			
8A	TB5-9,10	J6U	42	4	8	8	Y	Y			3

¹Add jumper from I1-W to J4-W, on rear of input file.

²Add jumper from J1-W to I4-W, on rear of input file.

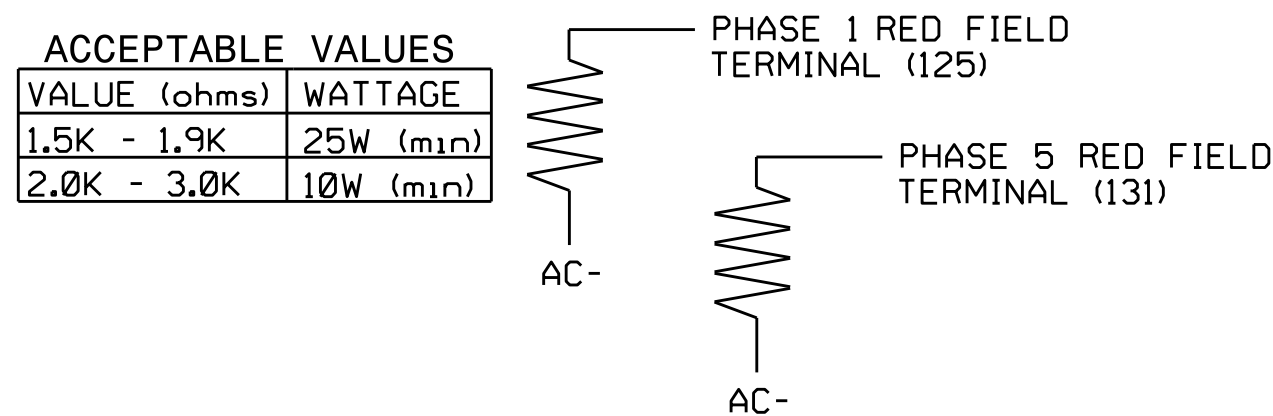
INPUT FILE POSITION LEGEND: J2L



THIS ELECTRICAL DETAIL IS FOR THE SIGNAL DESIGN: 13-1214
 DESIGNED: July 2016
 SEALED: 10/28/2016
 REVISED:

LOAD RESISTOR INSTALLATION DETAIL

(install resistors as shown below)



ELECTRICAL DETAIL

DOCUMENT NOT CONSIDERED FINAL UNLESS ALL SIGNATURES COMPLETED

Electrical and Programming Details for: US 74A (Charlotte Highway) at SR 2771 (Old Charlotte Highway) / Commercial Drive

Division 13 Buncombe County Asheville

PLAN DATE: October 2016 REVIEWED BY: BAS

PREPARED BY: A. F. Aslami REVIEWED BY:

750 N. Greenfield Pkwy, Garner, NC 27529

SEAL: NORTH CAROLINA PROFESSIONAL ENGINEER SEAL 030530 JACUARY M. LITTLE

DocuSigned by: *Carlynn M. Little* 11/2/2016

SIG. INVENTORY NO. 13-1214

09-1004-2016-12-13
 S:\IT\SSU\13\Sig\01\work\hgr\edp\sig\Map\As\am1\131214_sml.ele_xxx.dgn
 gms:am1