

**LOGICAL I/O PROCESSOR PROGRAMMING DETAIL
TO PRODUCE SPECIAL FYA-PPLT SIGNAL SEQUENCE**

(program controller as shown below)

- FROM MAIN MENU PRESS '2' (PHASE CONTROL), THEN '1' (PHASE CONTROL FUNCTIONS). SCROLL TO THE BOTTOM OF THE MENU AND ENABLE ACT LOGIC COMMANDS 1, 2 AND 3.
- FROM MAIN MENU PRESS '6' (OUTPUTS), THEN '3' (LOGICAL I/O PROCESSOR).

```

LOGICAL I/O COMMAND #1 (+/-COMMAND#)
IF ACTIVE PHASE #5 IS ON
AND RED CLEAR ON PHASE #5 IS ON
    ↓
    SCROLL DOWN
    ↓
THEN:
SET OUTPUT ASSIGNMENT #42 ON
SET OUTPUT ASSIGNMENT #43 OFF
    ↓
    PRESS '+'
  
```

NOTE: LOGIC FOR PHASE 5 RED CLEAR WHEN TRANSITIONING FROM PHASE 5 TO PHASE 6 (HEAD 51).

```

LOGICAL I/O COMMAND #2 (+/-COMMAND#)
IF ACTIVE PHASE #5 IS ON
    ↓
    SCROLL DOWN
    ↓
THEN:
SET OUTPUT ASSIGNMENT #44 OFF
    ↓
    PRESS '+'
  
```

NOTE: LOGIC FOR SWITCHING FLASHING YELLOW ARROW "OFF" DURING PHASE 5 (HEAD 51).

```

LOGICAL I/O COMMAND #3 (+/-COMMAND#)
IF YELLOW ON PHASE #5 IS ON
    ↓
    SCROLL DOWN
    ↓
THEN:
SET OUTPUT ASSIGNMENT #43 ON
  
```

NOTE: LOGIC FOR YELLOW ARROW CLEARANCE FROM PHASE 5 (HEAD 51).

LOGIC I/O PROCESSOR PROGRAMMING COMPLETE

OUTPUT REFERENCE SCHEDULE

OUTPUT 42 = Overlap C Red
 OUTPUT 43 = Overlap C Yellow
 OUTPUT 44 = Overlap C Green

OVERLAP PROGRAMMING DETAIL

(program controller as shown below)

FROM MAIN MENU PRESS '8' (OVERLAPS), THEN '1' (VEHICLE OVERLAP SETTINGS).

PRESS '+' TWICE

```

PAGE 1: VEHICLE OVERLAP 'C' SETTINGS
PHASE:      :12345678910111213141516
VEH OVL PARENTS:  XX
VEH OVL NOT VEH:
VEH OVL NOT PED:
VEH OVL GRN EXT:
STARTUP COLOR:  _ RED _ YELLOW _ GREEN
FLASH COLORS:  _ RED _ YELLOW X GREEN
SELECT VEHICLE OVERLAP OPTIONS: (Y/N)
FLASH YELLOW IN CONTROLLER FLASH?...Y
GREEN EXTENSION (0-255 SEC)...0.0
YELLOW CLEAR (0=PARENT,3-25.5 SEC)...0.0
RED CLEAR (0=PARENT,0.1-25.5 SEC)...0.0
OUTPUT AS PHASE # (0=NONE, 1-16)...0
  
```

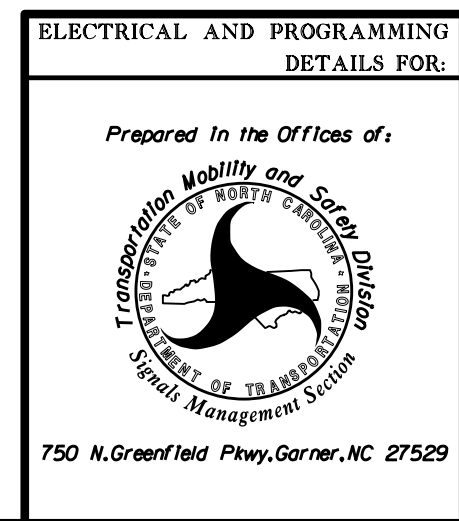
← NOTICE GREEN FLASH

OVERLAP PROGRAMMING COMPLETE

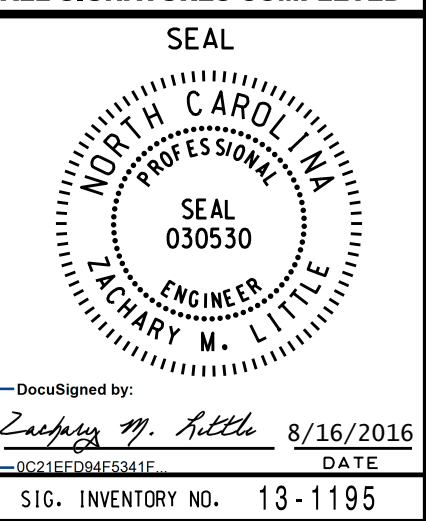
THIS ELECTRICAL DETAIL IS FOR
 THE SIGNAL DESIGN: 13-1195
 DESIGNED: April 2016
 SEALED: 8/10/2016
 REVISED:

Electrical Detail - Sheet 2 of 2

DOCUMENT NOT CONSIDERED FINAL
UNLESS ALL SIGNATURES COMPLETED



ELECTRICAL AND PROGRAMMING DETAILS FOR:		US 25 (Hendersonville Road) at Racquet Club Road	
Division 13	Buncombe County	Asheville	
PLAN DATE: June 2016	REVIEWED BY: BAS		
PREPARED BY: C. Strickland	REVIEWED BY:		
REVISIONS	INIT.	DATE	



I:\AUG-2016_14520
 S:\MITSAS\TIS\SIGNAL\work\hgr\oups\Sig_Man\Strickland\131195_sme.le_xxx.dgn
 C:\STRICKLAND