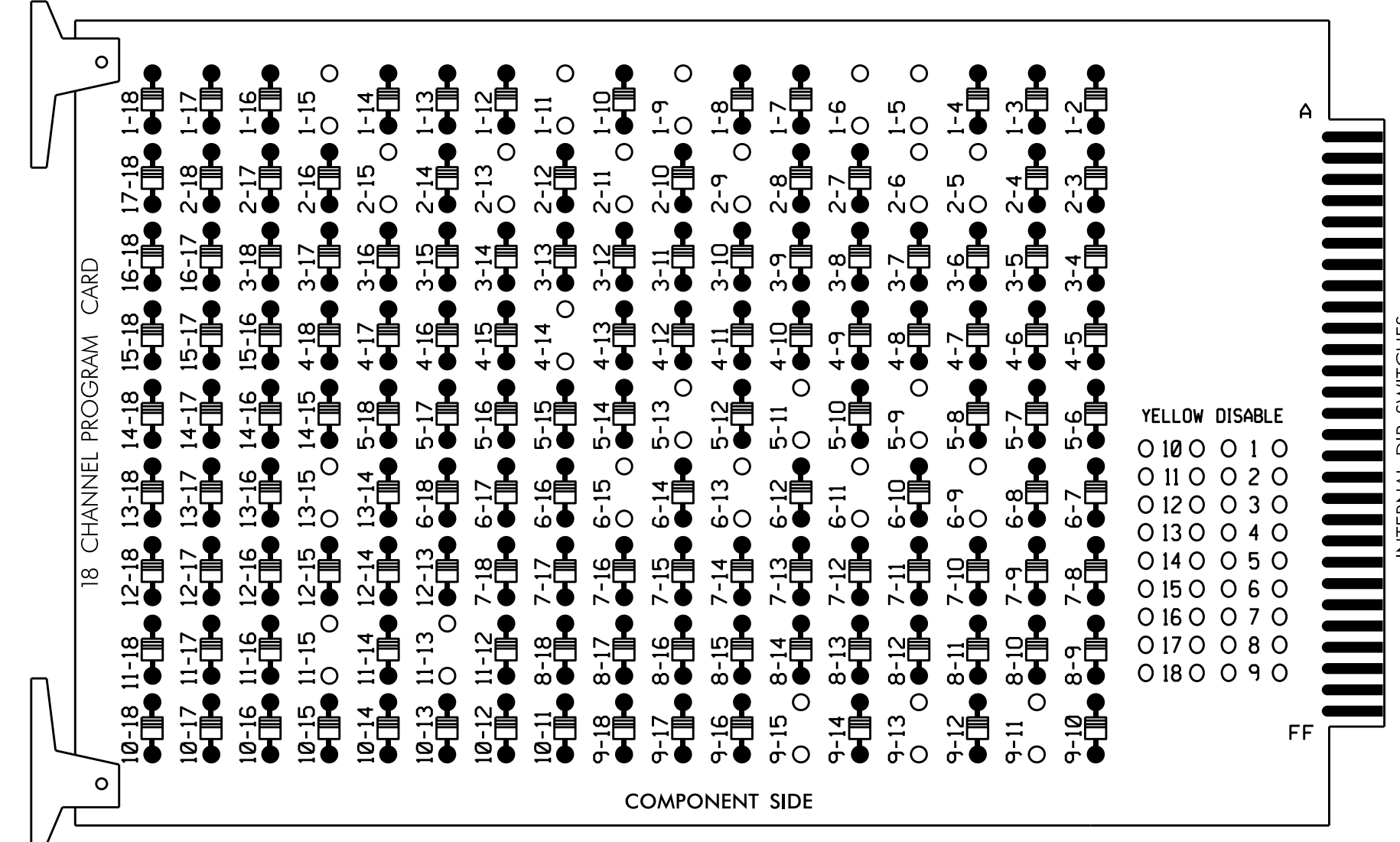


EDI MODEL 2018EClip-NC CONFLICT MONITOR PROGRAMMING DETAIL

(remove jumpers and set switches as shown)

REMOVE DIODE JUMPERS 1-5, 1-6, 1-9, 1-11, 1-15, 2-5, 2-6, 2-9, 2-11, 2-13, 2-15, 4-14, 5-9, 5-11, 5-13, 6-9, 6-11, 6-13, 6-15, 9-11, 9-13, 9-15, 11-13, 11-15 and 13-15.



REMOVE JUMPERS AS SHOWN

NOTES:

- Card is provided with all diode jumpers in place. Removal of any jumper allows its channels to run concurrently.
- Ensure jumpers SEL2-SEL5 and SEL9 are present on the monitor board.
- Ensure that Red Enable is active at all times during normal operation.
- Integrate monitor with Ethernet network in cabinet.

■ = DENOTES POSITION OF SWITCH

NOTES

- To prevent "flash-conflict" problems, insert red flash program blocks for all unused vehicle load switches in the output file. The installer shall verify that signal heads flash in accordance with the Signal Plans.
- Enable Simultaneous Gap-Out for all phases.
- Program phases 2 and 6 for Variable Initial and Gap Reduction.
- Program phases 2 and 6 for Start Up In Green.
- Program phases 2, 4 and 6 for 'STARTUP PED CALL'.
- Program phases 2 and 6 for Yellow Flash, and overlap 1 as Wag Overlaps.
- The cabinet and controller are part of the Asheville Signal System.

SIGNAL HEAD HOOK-UP CHART

| LOAD SWITCH NO. | S1 | S2 | S3 | S4 | S5 | S6 | S7 | S8 | S9 | S10 | S11 | S12 | AUX S1 | AUX S2 | AUX S3 | AUX S4 | AUX S5 | AUX S6 | | | |
|-----------------------|-----|-------|----------|-----|-----|-------|-----|-----|-------|----------|-----|-------|--------|----------|--------|--------|--------|--------|------|------|------|
| CMU CHANNEL NO. | 1 | 2 | 13 | 3 | 4 | 14 | 5 | 6 | 15 | 7 | 8 | 16 | 9 | 10 | 17 | 11 | 12 | 18 | | | |
| PHASE | 1 | 2 | 2 PED | 3 | 4 | 4 PED | 5 | 6 | 6 PED | 7 | 8 | 8 PED | OLA | OLB | SPARE | OLC | OLD | SPARE | | | |
| SIGNAL HEAD NO. | 11 | 21,22 | P21, P22 | 31 | 32 | 62 | 22 | 41 | 42 | P41, P42 | 32 | 51 | 61,62 | P61, P62 | NU | NU | NU | 51 | NU | | |
| RED | | 128 | | 116 | 116 | | | 101 | 101 | | * | | 134 | | | | | | | | |
| YELLOW | * | 129 | | 117 | 117 | | | 102 | 102 | | | | 135 | | | | | | | | |
| GREEN | | 130 | | 118 | 118 | | | 103 | 103 | | | | 136 | | | | | | | | |
| RED ARROW | | | | | | | | | | | | | | | | | | | A121 | A114 | |
| YELLOW ARROW | | | | | | | | | | | | | | | | | | | | A122 | A115 |
| FLASHING YELLOW ARROW | | | | | | | | | | | | | | | | | | | | A123 | A116 |
| GREEN ARROW | 127 | | | 118 | 118 | 103 | 103 | | | 133 | 133 | | | | | | | | | | |
| Hand | | | 113 | | | | | | | 104 | | | 119 | | | | | | | | |
| Walking | | | 115 | | | | | | | 106 | | | 121 | | | | | | | | |

NU = Not Used
* Denotes install load resistor. See load resistor installation detail this sheet.
★ See pictorial of head wiring in detail below.

COUNTDOWN PEDESTRIAN SIGNAL OPERATION

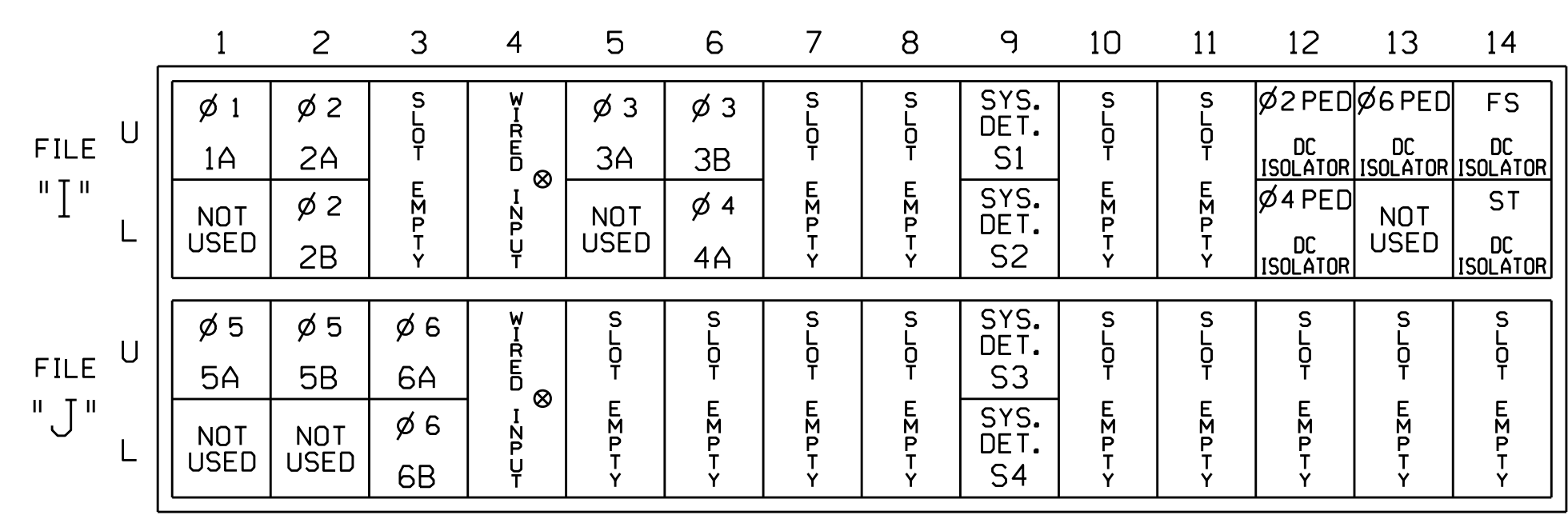
Countdown Ped Signals are required to display timing only during Ped Clearance Interval. Consult Ped Signal Module user's manual for instructions on selecting this feature.

EQUIPMENT INFORMATION

CONTROLLER.....2070E
CABINET.....332 W/ AUX
SOFTWARE.....ECONOLITE OASIS
CABINET MOUNT.....BASE
OUTPUT FILE POSITIONS...18 WITH AUX. OUTPUT FILE
LOAD SWITCHES USED.....S1,S2,S3,S4,S5,S6,S7,S8,S9,
AUX S1,AUX S4
PHASES USED.....1,2,2 PED,3,4,4 PED,5,6,6 PED
OVERLAP "A".....1+2
OVERLAP "B".....NOT USED
OVERLAP "C".....5+6
OVERLAP "D".....NOT USED

INPUT FILE POSITION LAYOUT

(front view)



EX.: 1A, 2A, ETC. = LOOP NO.'S FS = FLASH SENSE ST = STOP TIME

⊗ Wired Input - Do not populate slot with detector card

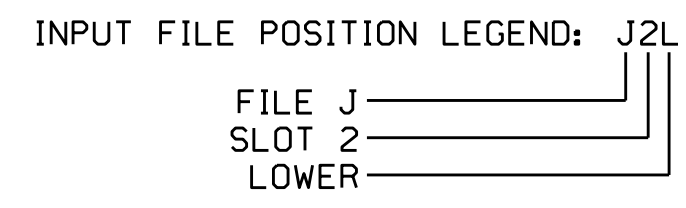
INPUT FILE CONNECTION & PROGRAMMING CHART

| LOOP NO. | LOOP TERMINAL | INPUT FILE POS. | PIN NO. | INPUT ASSIGNMENT NO. | DETECTOR NO. | NEMA PHASE | CALL | EXTEND | FULL TIME DELAY | STRETCH TIME | DELAY TIME |
|------------------|---------------|-----------------|---------|----------------------|--------------|------------|------|--------|-----------------|--------------|------------|
| 1A ¹ | TB2-1,2 | I1U | 56 | 18 | 1 | 1 | Y | Y | | | 15 |
| | - | J4U | 48 | 10 | 26 | 6 | Y | Y | Y | | 3 |
| 2A | TB2-5,6 | I2U | 39 | 1 | 2 | 2 | Y | Y | | | |
| 2B | TB2-7,8 | I2L | 43 | 5 | 12 | 2 | Y | Y | | | |
| 3A | TB4-5,6 | I5U | 58 | 20 | 3 | 3 | Y | Y | | | |
| 3B | TB4-9,10 | I6U | 41 | 3 | 4 | 3 | Y | Y | | | |
| 4A | TB4-11,12 | I6L | 45 | 7 | 14 | 4 | Y | Y | | | 10 |
| 5A ² | TB3-1,2 | J1U | 55 | 17 | 5 | 5 | Y | Y | Y | | 15 |
| | - | I4U | 47 | 9 | 22 | 2 | Y | Y | Y | | 3 |
| 5B | TB3-5,6 | J2U | 40 | 2 | 6 | 5 | Y | Y | | | 15 |
| 6A | TB3-9,10 | J3U | 64 | 26 | 36 | 6 | Y | Y | | | |
| 6B | TB3-11,12 | J3L | 77 | 39 | 46 | 6 | Y | Y | | | |
| * S1 | TB6-9,10 | I9U | 60 | 22 | 11 | SYS | | | | | |
| * S2 | TB6-11,12 | I9L | 62 | 24 | 13 | SYS | | | | | |
| * S3 | TB7-9,10 | J9U | 59 | 21 | 15 | SYS | | | | | |
| * S4 | TB7-11,12 | J9L | 61 | 23 | 17 | SYS | | | | | |
| PED PUSH BUTTONS | | | | | | | | | | | |
| P21,P22 | TB8-4,6 | I12U | 67 | 29 | | PED 2 | | | 2 PED | | |
| P41,P42 | TB8-5,6 | I12L | 69 | 31 | | PED 4 | | | 4 PED | | |
| P61,P62 | TB8-7,9 | I13U | 68 | 30 | | PED 6 | | | 6 PED | | |

NOTE:
INSTALL DC ISOLATORS IN INPUT FILE SLOTS 112 AND 113.

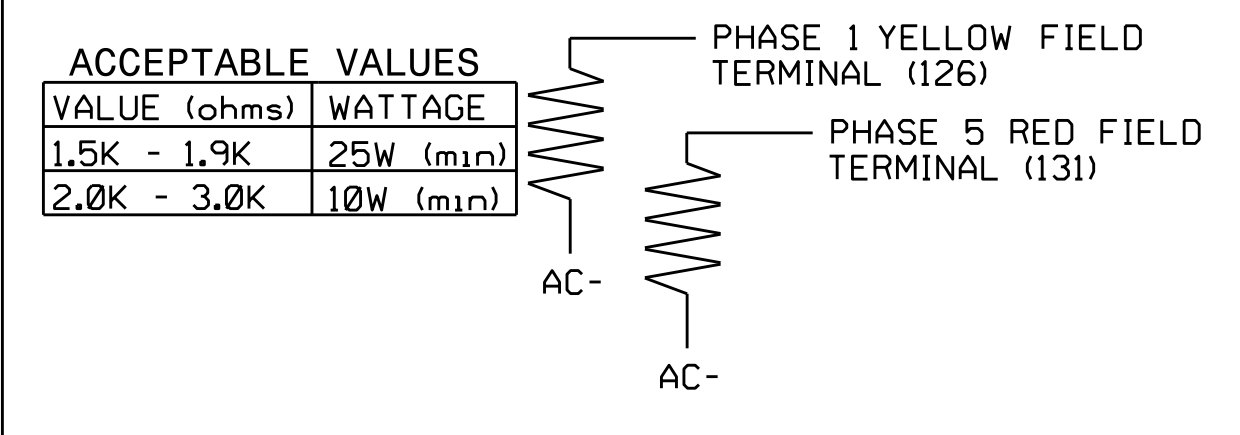
- Add jumper from I1-W to J4-W, on rear of input file.
- Add jumper from J1-W to I4-W, on rear of input file.

* System detector only. Remove the vehicle phase assigned to this detector in the default programming.



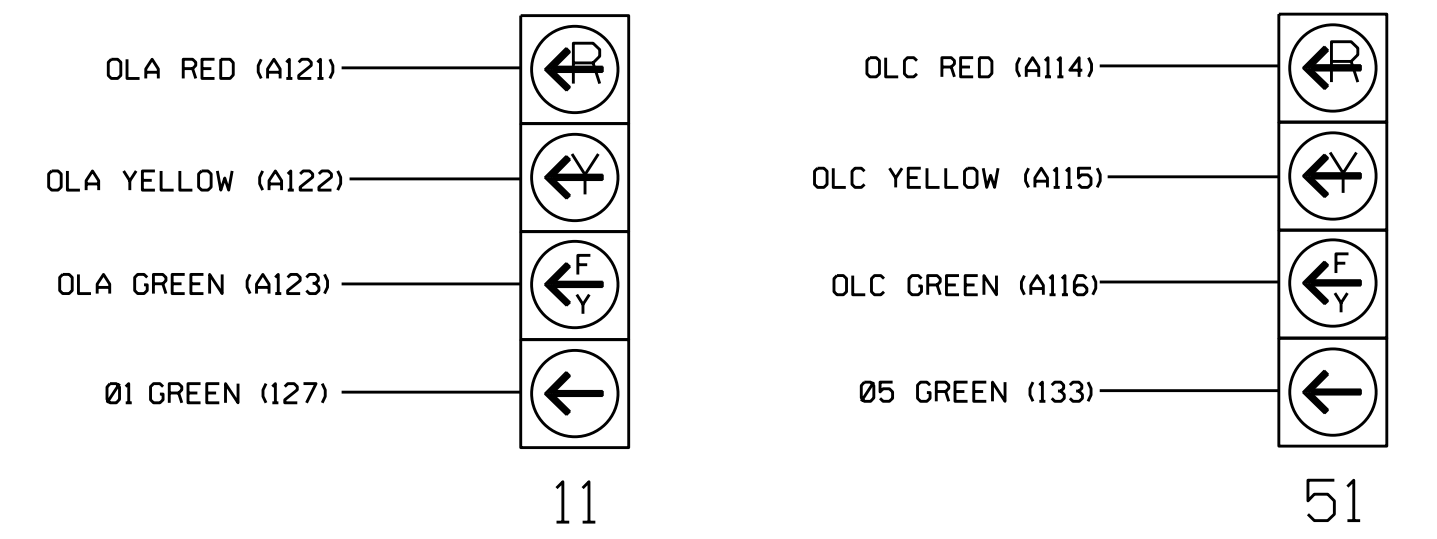
LOAD RESISTOR INSTALLATION DETAIL

(install resistors as shown below)



4 SECTION FYA PPLT SIGNAL WIRING DETAIL

(wire signal heads as shown)



NOTE

- The sequence display for this signal requires special logic programming. See sheet 2 of 2 for programming instructions.

Electrical Detail - Sheet 1 of 2

DOCUMENT NOT CONSIDERED FINAL UNLESS ALL SIGNATURES COMPLETED

Prepared In the Offices of:
TRANSPORTATION MOBILITY AND SAFETY DIVISION
NORTH CAROLINA DEPARTMENT OF TRANSPORTATION
Signal Management Section
750 N. Greenfield Pkwy, Garner, NC 27529

NC 146 (Long Shoals Roads) at Schenck Parkway/Skyland Inn Drive

Division 13 Buncombe County Asheville
PLAN DATE: September 2016 REVIEWED BY: T. Joyce
PREPARED BY: C. Strickland REVIEWED BY:

REVISIONS INIT. DATE

Seal of Cary M. Little, Professional Engineer, License No. 030530

9/8/2016

SIG. INVENTORY NO. 13-1126