

PHASING DIAGRAM

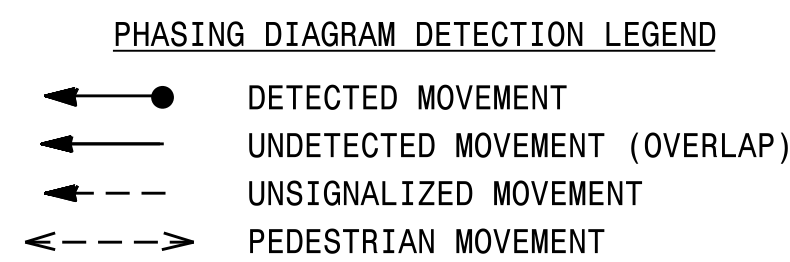
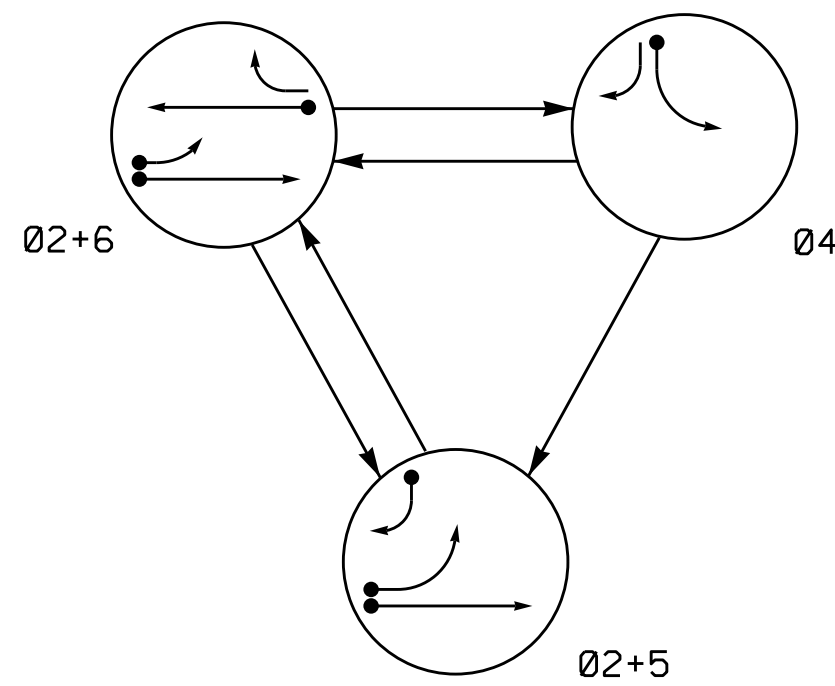
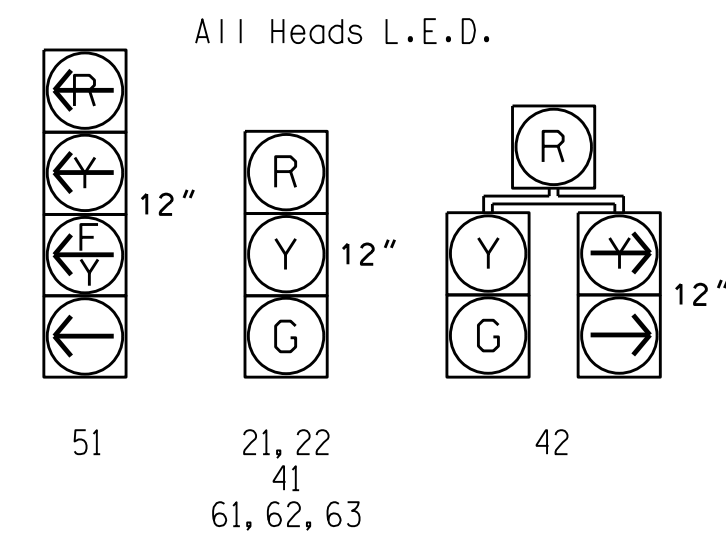


TABLE OF OPERATION

SIGNAL FACE	PHASE			
	02+5	02+6	04	F
21, 22	G	G	R	Y
41	R	R	G	R
42	R	R	G	R
51	F	R	Y	
61, 62, 63	R	G	R	Y

SIGNAL FACE I.D.



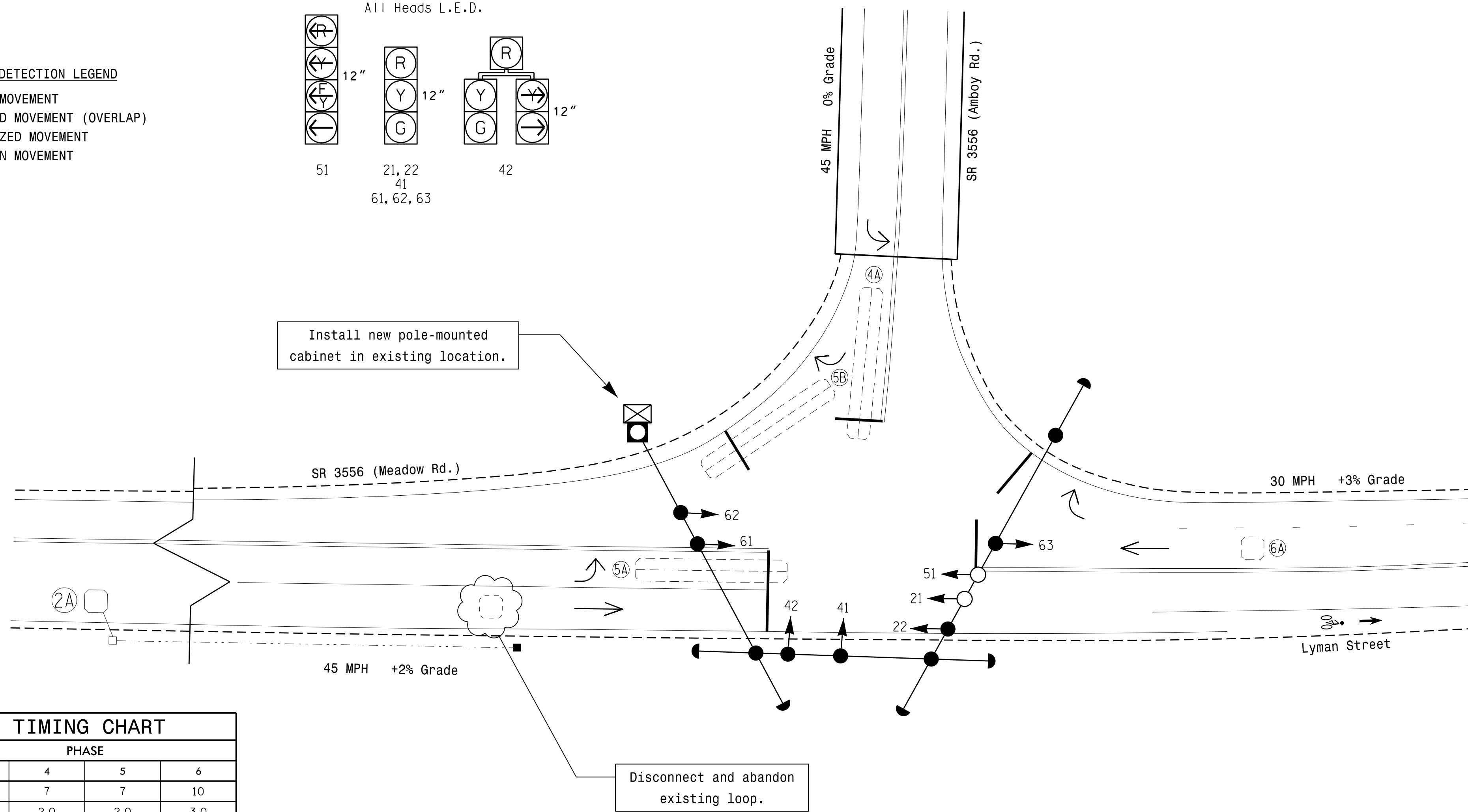
OASIS 2070 LOOP & DETECTOR INSTALLATION CHART

LOOP	SIZE (FT)	DISTANCE FROM STOPBAR (FT)	TURNS	NEW LOOP	DETECTOR PROGRAMMING					SYSTEM LOOP	NEW CARD	
					PHASE	CALLING	EXTENSION	FULL TIME DELAY	STRETCH TIME			DELAY TIME
2A	6X6	300	4	Y	2	Y	Y	-	-	-	-	Y
4A	6X40	+5	2-4-2	-	4	Y	Y	-	-	3	-	Y
5A	6X40	+5	2-4-2	-	5	Y	Y	-	-	15	-	Y
5B	6X40	+10	2-4-2	-	2	Y	Y	Y	-	-	-	Y
6A	6X6	70	EXIST	-	6	Y	Y	-	-	-	-	Y

3 Phase Fully Actuated Asheville Signal System

NOTES

- Refer to "Roadway Standard Drawings NCDOT" dated January 2012 and "Standard Specifications for Roads and Structures" dated January 2012.
- Do not program signal for late night flashing operation unless otherwise directed by the Engineer.
- Phase 5 may be lagged.
- Reposition existing signal head number 22.
- Disconnect and abandon existing loop as shown.
- Set all detector units to presence mode.
- Locate new cabinet so as not to obstruct sight distance of vehicles turning right on red.
- Pavement markings are existing.
- Maximum times shown in timing chart are for free-run operation only. Coordinated signal system timing values supersede these values.

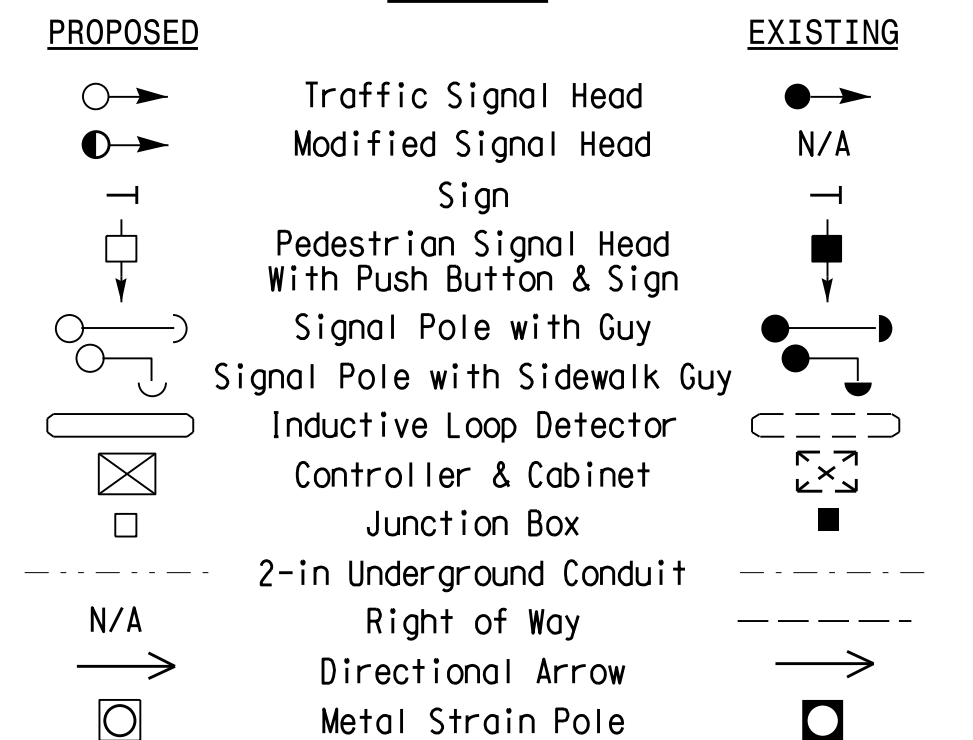


OASIS 2070 TIMING CHART

FEATURE	PHASE			
	2	4	5	6
Min Green 1 *	10	7	7	10
Extension 1 *	6.0	2.0	2.0	3.0
Max Green 1 *	90	25	15	45
Yellow Clearance	4.3	3.0	3.0	4.3
Red Clearance	1.6	1.8	1.8	1.6
Red Revert	2.0	2.0	2.0	2.0
Walk 1 *	-	-	-	-
Don't Walk 1	-	-	-	-
Seconds Per Actuation *	2.5	-	-	-
Max Variable Initial *	34	-	-	-
Time Before Reduction *	15	-	-	-
Time To Reduce *	30	-	-	-
Minimum Gap	3.0	-	-	-
Recall Mode	MIN RECALL	-	-	MIN RECALL
Vehicle Call Memory	YELLOW	-	-	YELLOW
Dual Entry	-	-	-	-
Simultaneous Gap	ON	ON	ON	ON

* These values may be field adjusted. Do not adjust Min Green and Extension times for phases 2 and 6 lower than what is shown. Min Green for all other phases should not be lower than 4 seconds.

LEGEND



Signal Upgrade

Prepared In the Offices of:

750 N. Greenfield Pkwy, Garner, NC 27529

SR 3556 (Meadow Rd.)/Lyman St. at SR 3556 (Amboy Rd.)

Division 13 Buncombe County Asheville

PLAN DATE: June 2016 REVIEWED BY: T.J. Williams

PREPARED BY: R.N. Zinser REVIEWED BY:

REVISIONS: _____ INIT. DATE

SCALE: 0 20 1"=20'

DOCUMENT NOT CONSIDERED FINAL UNLESS ALL SIGNATURES COMPLETED

SEAL

SEAL 043914

Richard N. Zinser 10/25/2016

SIG. INVENTORY NO. 13-0396

05-001-2016-13-38
 S:\IT\ASU\13\Sig\Signal\Signal Design\Signal Design\116_Signal_System\Signal_Design\13-0396\13-0396_sig_dsn_2016mdd-dgn
 rnz:insr