

**This electronic collection of documents is provided
for the convenience of the user
and is Not a Certified Document –**

**The documents contained herein were originally issued
and sealed by the individuals whose names and license
numbers appear on each page, on the dates appearing
with their signature on that page.**

**This file or an individual page
shall not be considered a certified document.**

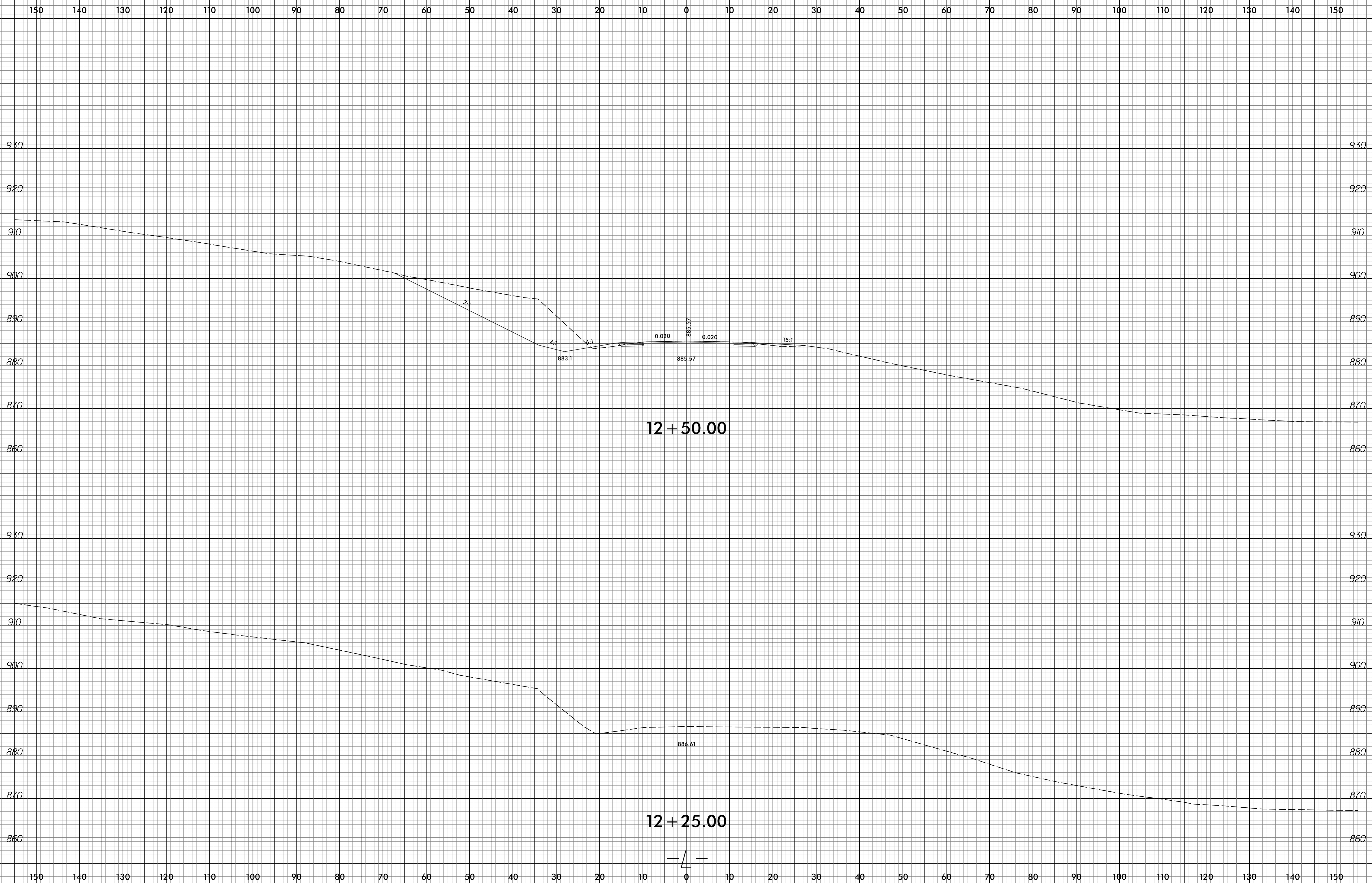
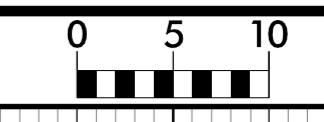
STATE OF NORTH CAROLINA DIVISION OF HIGHWAYS

CROSS-SECTION SUMMARY

NOTE: EMBANKMENT COLUMN DOES NOT INCLUDE BACKFILL FOR UNDERCUT

Station	Uncl. Exc.	Embt	Undercut	Station	Uncl. Exc.	Embt	Undercut												
L	(cu. yd.)	(cu. yd.)	(cu. yd.)	DR2	(cu. yd.)	(cu. yd.)	(cu. yd.)												
-L-				10+25	0	50	0												
12+40				10+50	1	46	0												
12+50	46	1	0	10+75	15	11	0												
12+75	238	9	0	10+80	3	0	0												
13+00	246	13	0																
13+25	234	16	0																
13+50	190	15	0																
13+75	146	35	0																
14+00	68	91	0																
14+25	0	143	0																
14+50	0	186	0																
14+75	1	208	0																
14+88.83	0	113	0																
14+90	0	9	0																
Station	Uncl. Exc.	Embt	Undercut																
L	(cu. yd.)	(cu. yd.)	(cu. yd.)																
-L-																			
15+90																			
15+91.16	0	6	0																
16+00	0	94	0																
16+25	0	242	0																
16+50	0	203	0																
16+75	0	163	0																
17+00	0	135	0																
17+25	14	110	0																
17+50	21	62	0																
17+75	29	28	0																
18+00	52	15	0																
18+25	73	8	0																
18+50	81	6	0																
18+75	83	6	0																
19+00	99	5	0																
19+25	55	2	0																
Station	Uncl. Exc.	Embt	Undercut																
DR1	(cu. yd.)	(cu. yd.)	(cu. yd.)																
-DR1-																			
10+15																			
10+25	0	22	0																
10+50	0	83	0																
10+75	0	125	0																
11+00	0	159	0																
11+06	0	42	0																
11+22	0	55	0																
Station	Uncl. Exc.	Embt	Undercut																
DR2	(cu. yd.)	(cu. yd.)	(cu. yd.)																
-DR2-																			
10+07																			

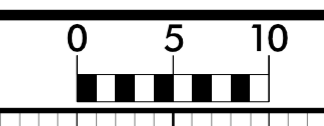
Approximate quantities only. Unclassified excavation, borrow excavation, fine grading, clearing and grubbing, and removal of existing pavement will be paid for at the lump sum price for "Grading".



12 + 50.00

12 + 25.00

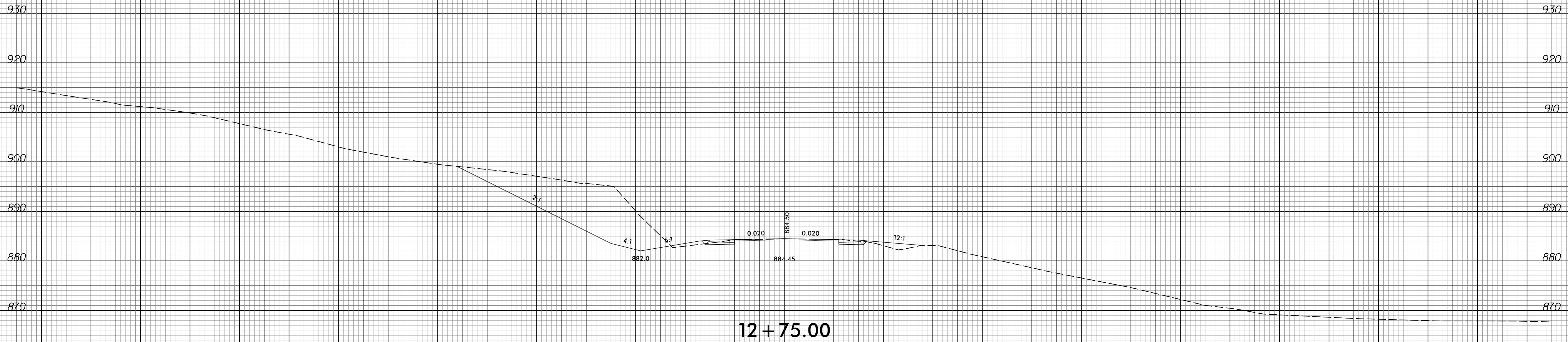
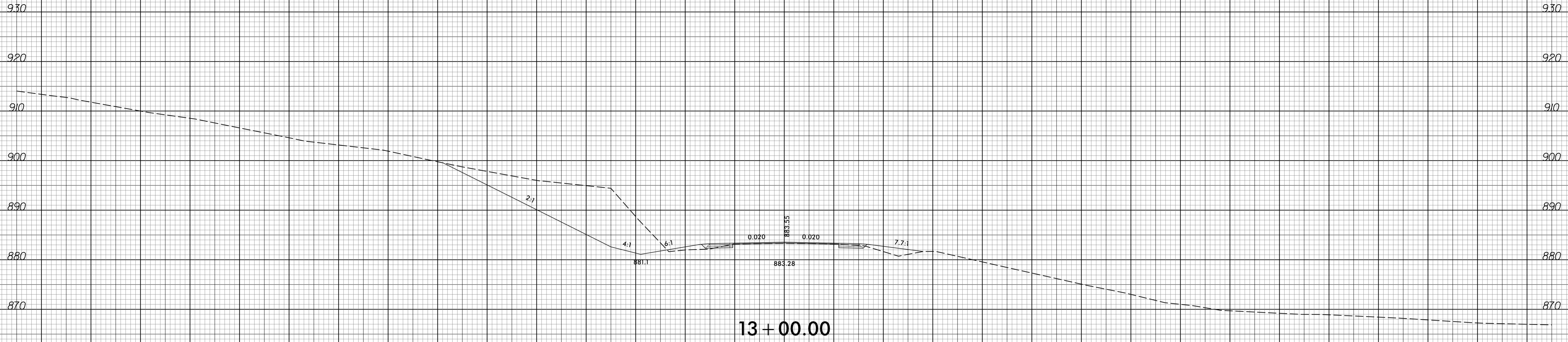
8/23/09



PROJ. REFERENCE NO. B-5397

SHEET NO. X-2

150 140 130 120 110 100 90 80 70 60 50 40 30 20 10 0 10 20 30 40 50 60 70 80 90 100 110 120 130 140 150



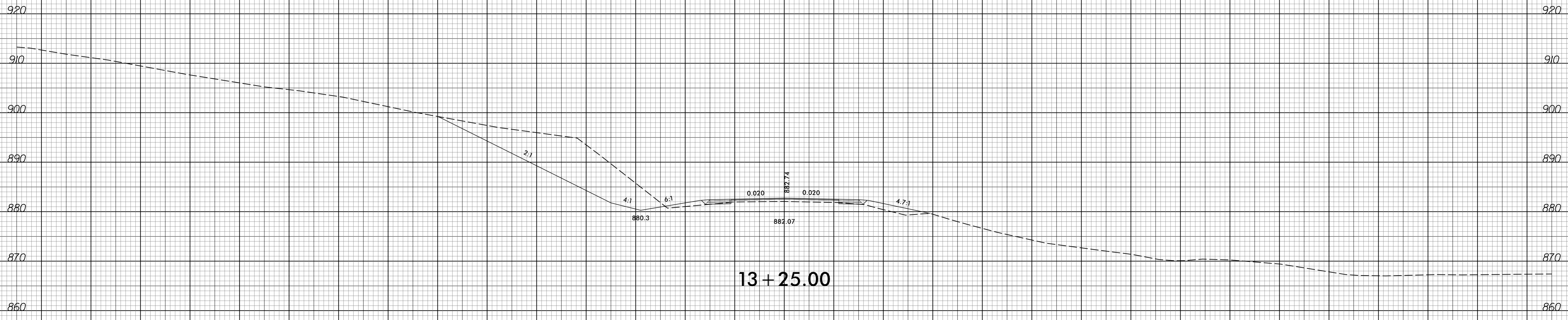
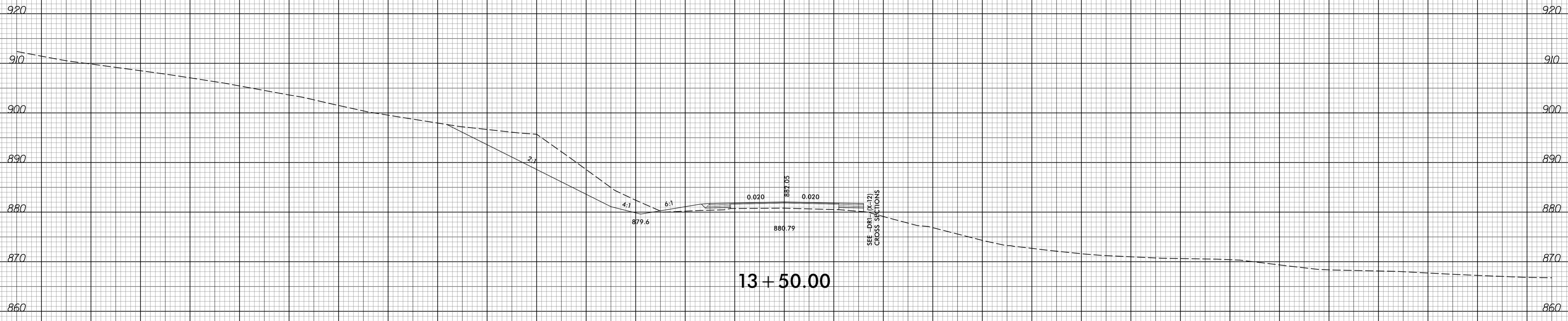
150 140 130 120 110 100 90 80 70 60 50 40 30 20 10 0 10 20 30 40 50 60 70 80 90 100 110 120 130 140 150

8/26/2016
F:\Roadway\Corridor\Modelling\B5397_Rdy_xp1_cm.L.dgn
USER:NAME

8/23/19

0 5 10	PROJ. REFERENCE NO.	SHEET NO.
	B-5397	X-3

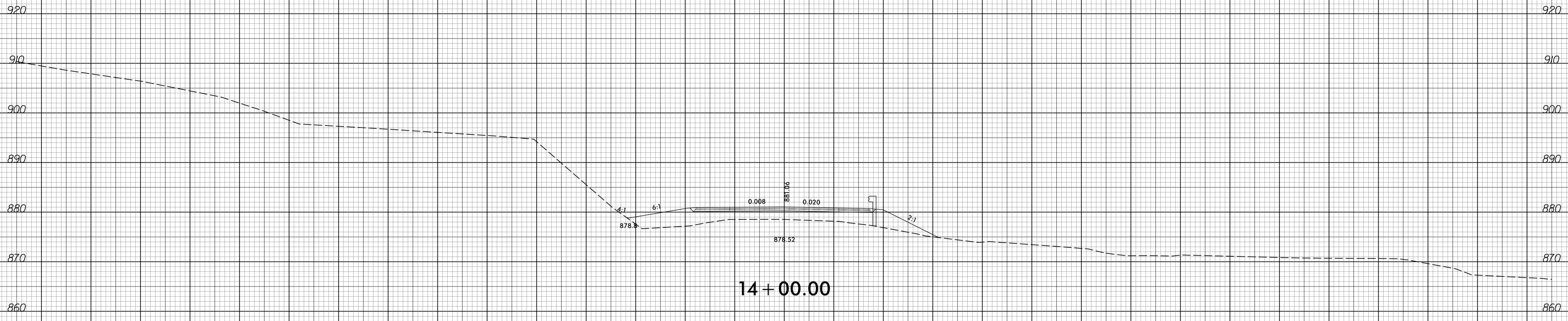
150 140 130 120 110 100 90 80 70 60 50 40 30 20 10 0 10 20 30 40 50 60 70 80 90 100 110 120 130 140 150



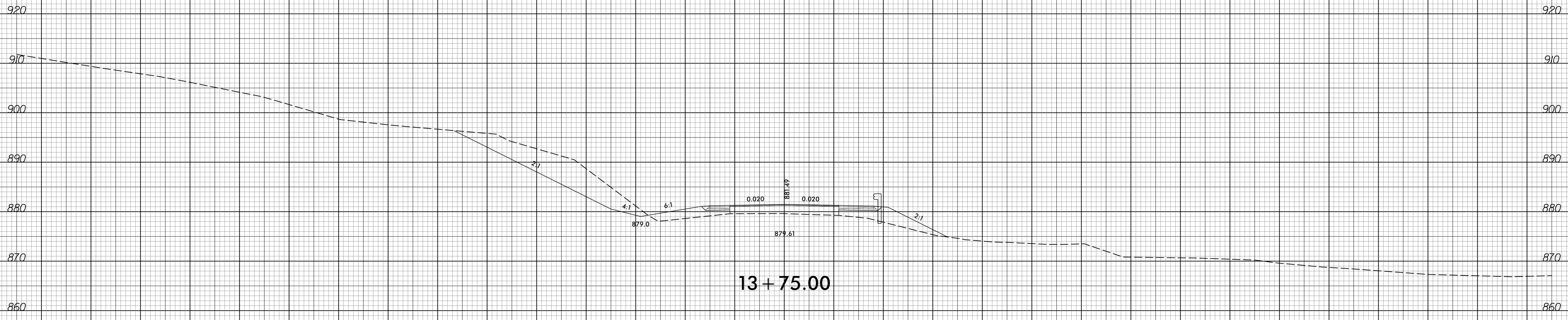
150 140 130 120 110 100 90 80 70 60 50 40 30 20 10 0 10 20 30 40 50 60 70 80 90 100 110 120 130 140 150

8/26/2016
F:\Roadway\CorridorModeling\B5397_Rdy_xp1_cm.L.dgn
USER:NAME

150 140 130 120 110 100 90 80 70 60 50 40 30 20 10 0 10 20 30 40 50 60 70 80 90 100 110 120 130 140 150



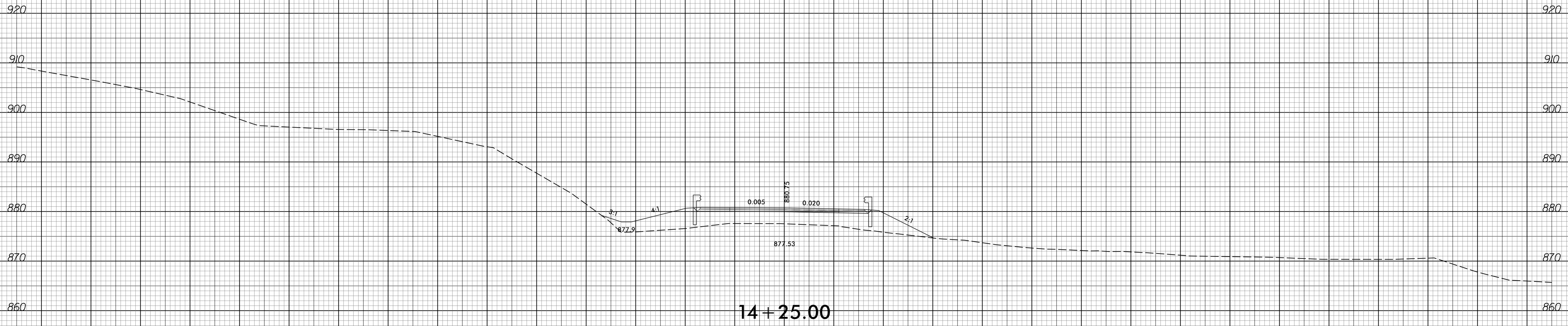
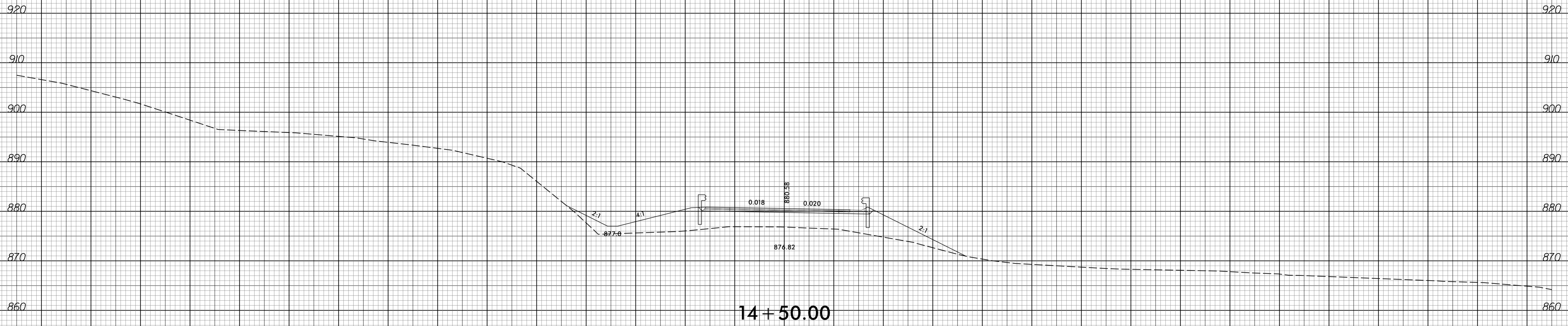
14 + 00.00



13 + 75.00

8/23/19

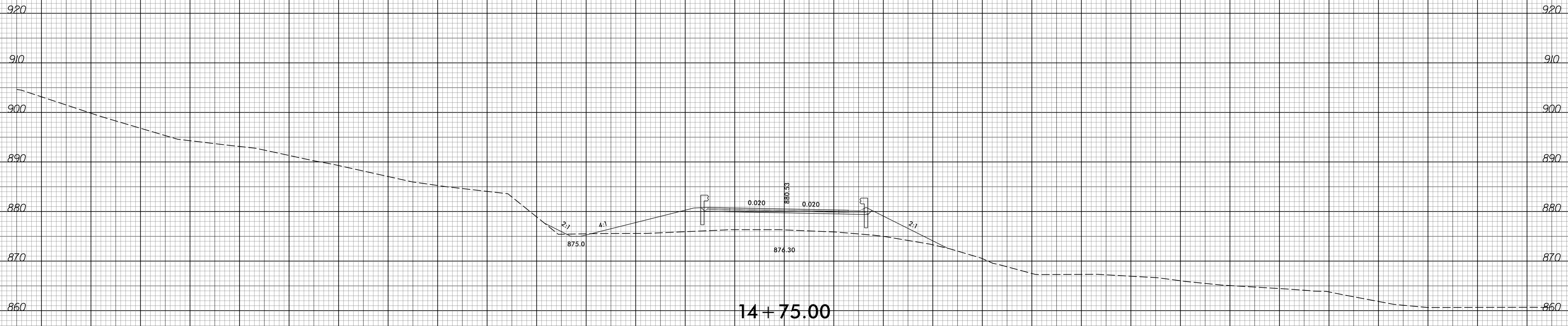
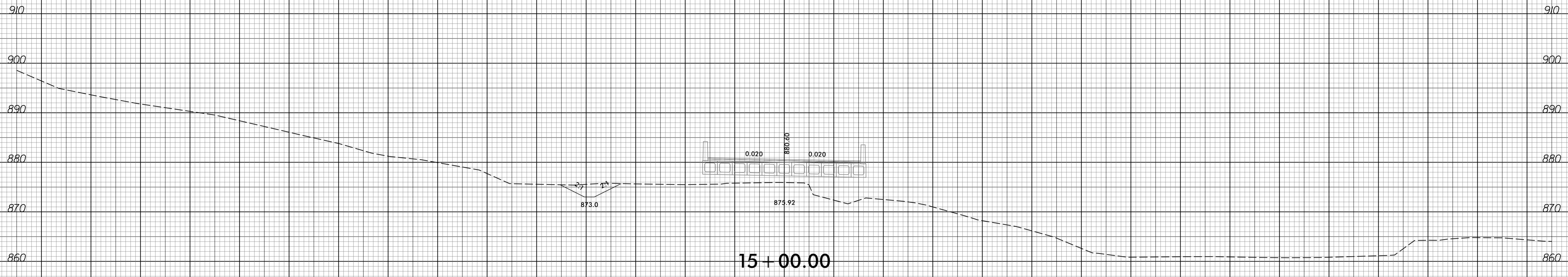
150 140 130 120 110 100 90 80 70 60 50 40 30 20 10 0 10 20 30 40 50 60 70 80 90 100 110 120 130 140 150



150 140 130 120 110 100 90 80 70 60 50 40 30 20 10 0 10 20 30 40 50 60 70 80 90 100 110 120 130 140 150

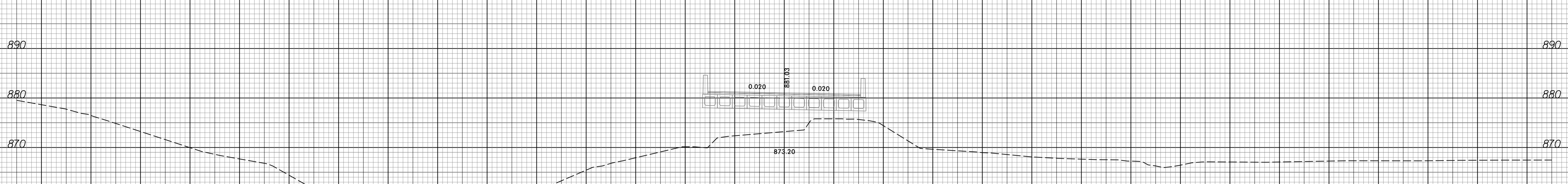
8/26/2016
 F:\Roadway\Corridor\Modelling\B5397_Rdy_xp1_cm.L.dgn
 USER:NAME

150 140 130 120 110 100 90 80 70 60 50 40 30 20 10 0 10 20 30 40 50 60 70 80 90 100 110 120 130 140 150

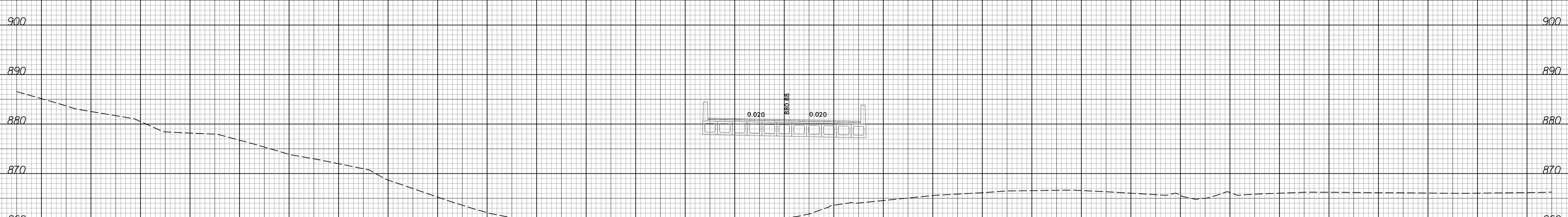


150 140 130 120 110 100 90 80 70 60 50 40 30 20 10 0 10 20 30 40 50 60 70 80 90 100 110 120 130 140 150

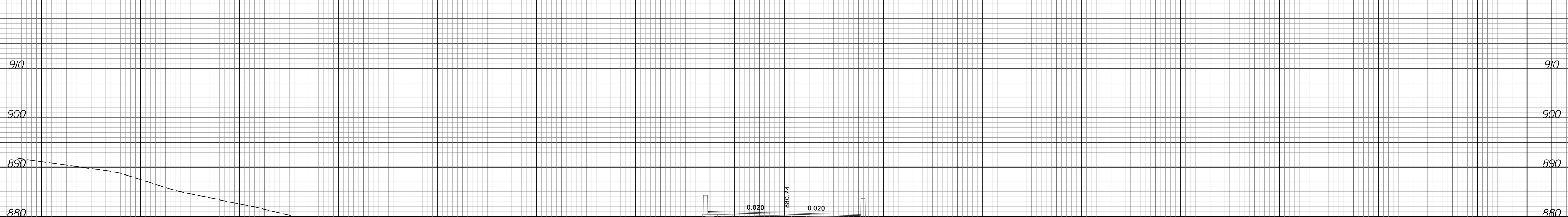
150 140 130 120 110 100 90 80 70 60 50 40 30 20 10 0 10 20 30 40 50 60 70 80 90 100 110 120 130 140 150



890 880 870 860 890 880 870 860

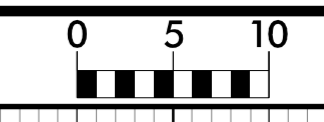


900 890 880 870 860 850 900 890 880 870 860 850



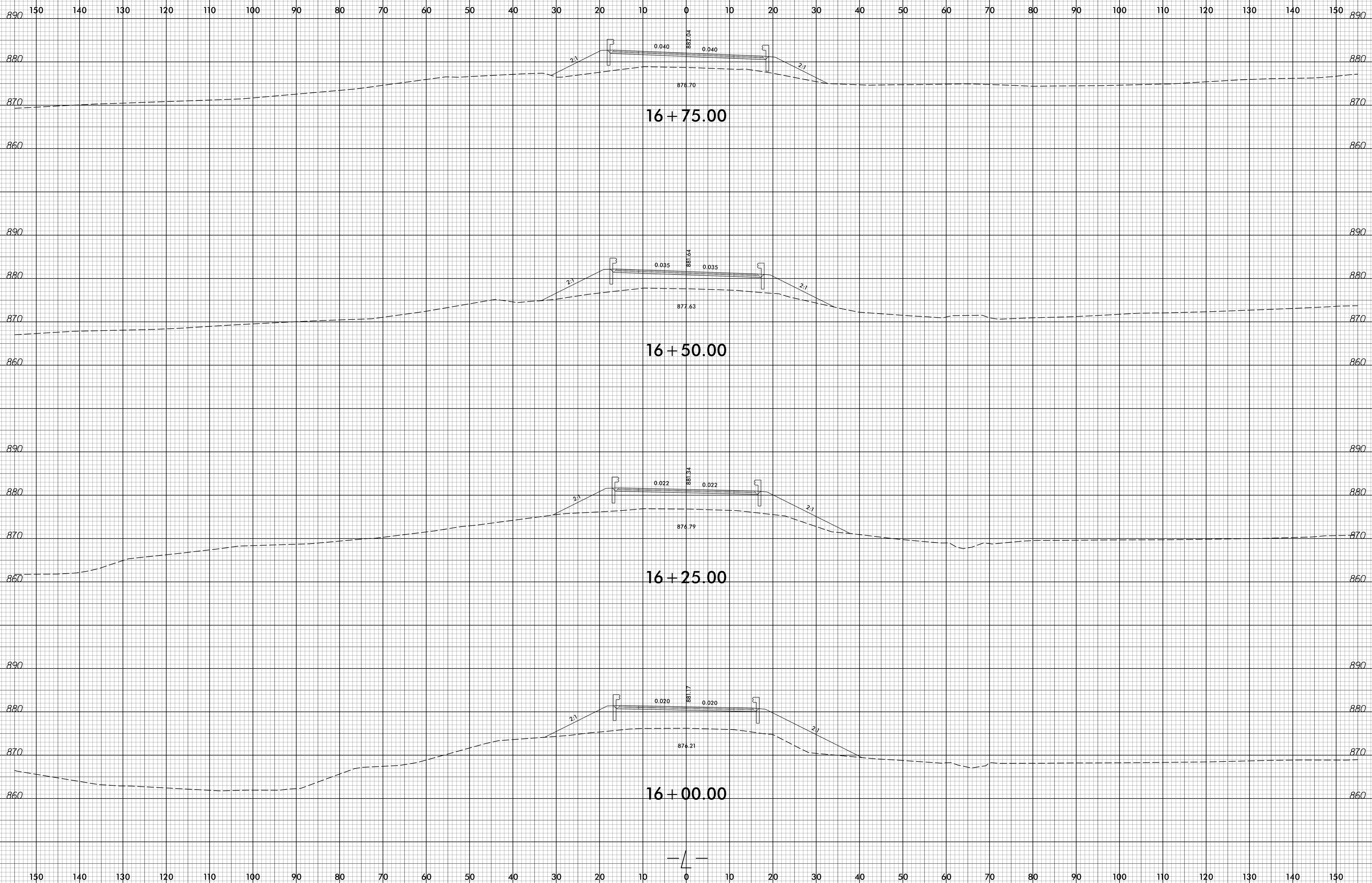
910 900 890 880 870 860 850 910 900 890 880 870 860 850

8/23/19

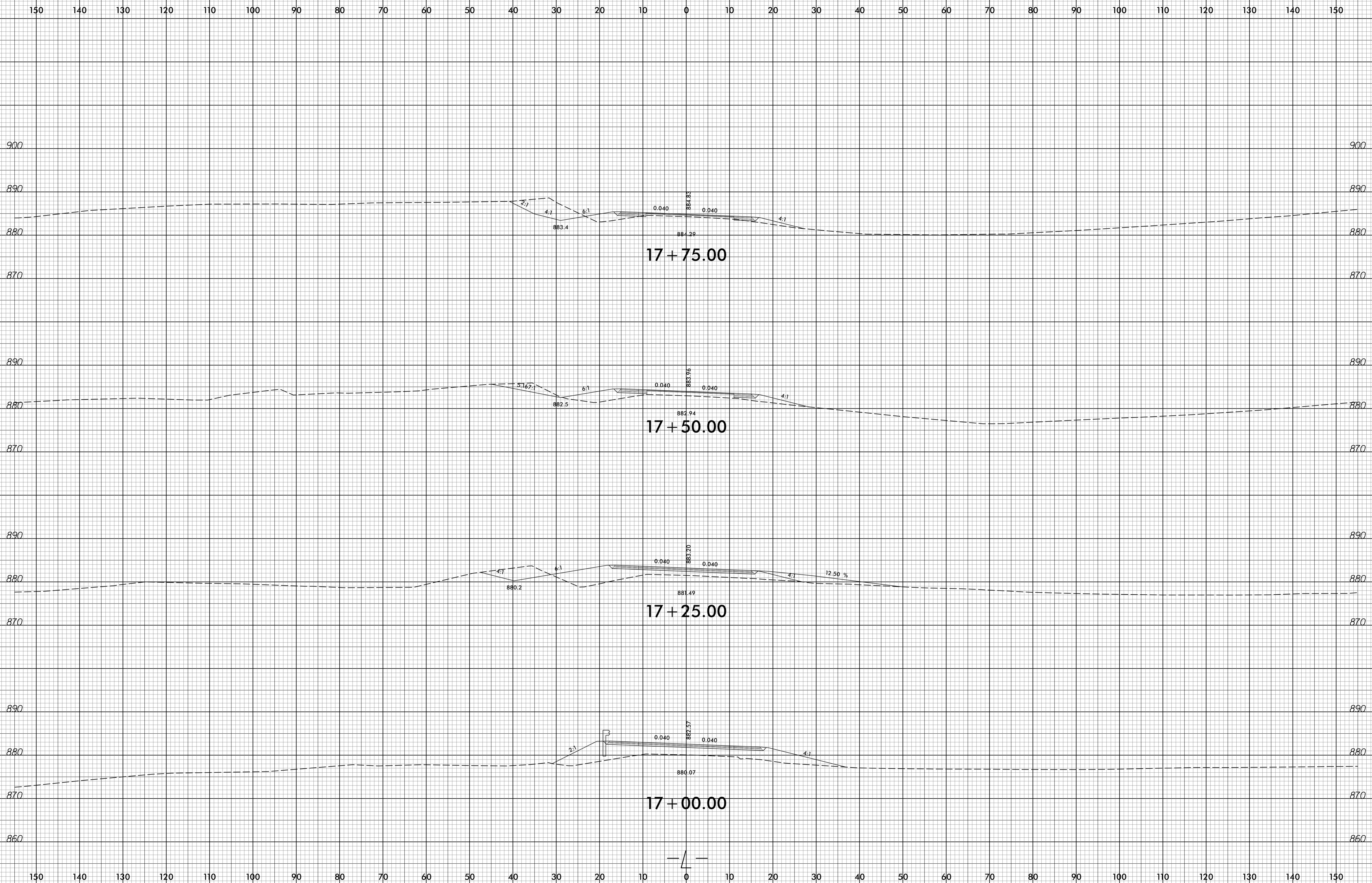


PROJ. REFERENCE NO.
B-5397

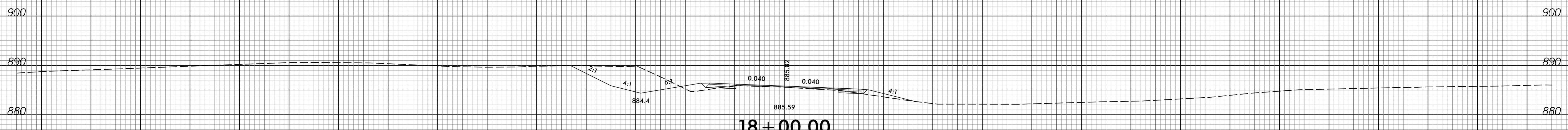
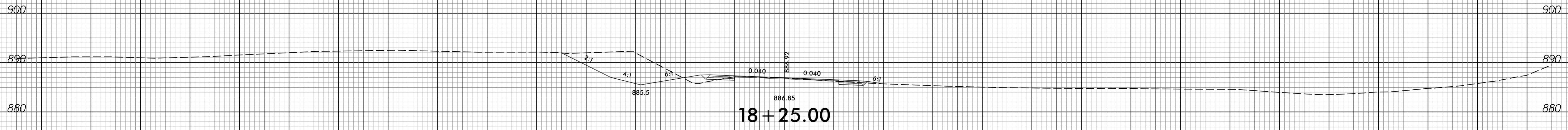
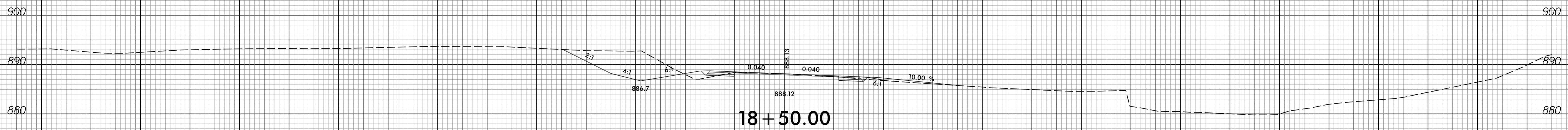
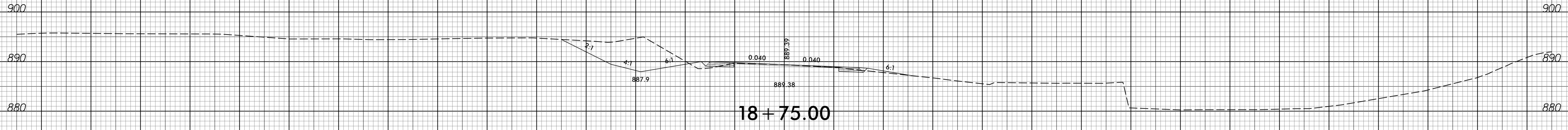
SHEET NO.
X-8



8/26/2016
F:\Roadway\CorridorModeling\B5397_Rdy_xp1_cm.L.dgn
USER:RAMEL

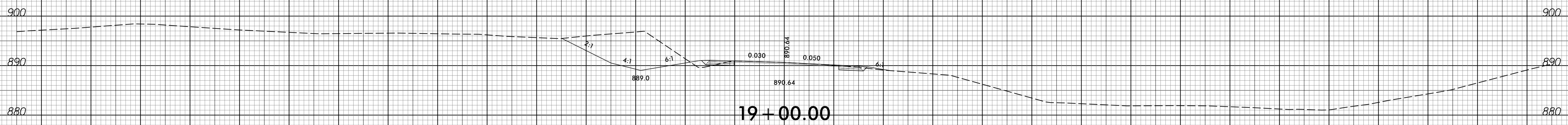
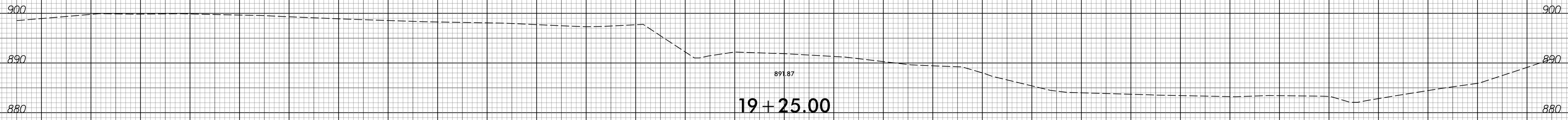


150 140 130 120 110 100 90 80 70 60 50 40 30 20 10 0 10 20 30 40 50 60 70 80 90 100 110 120 130 140 150



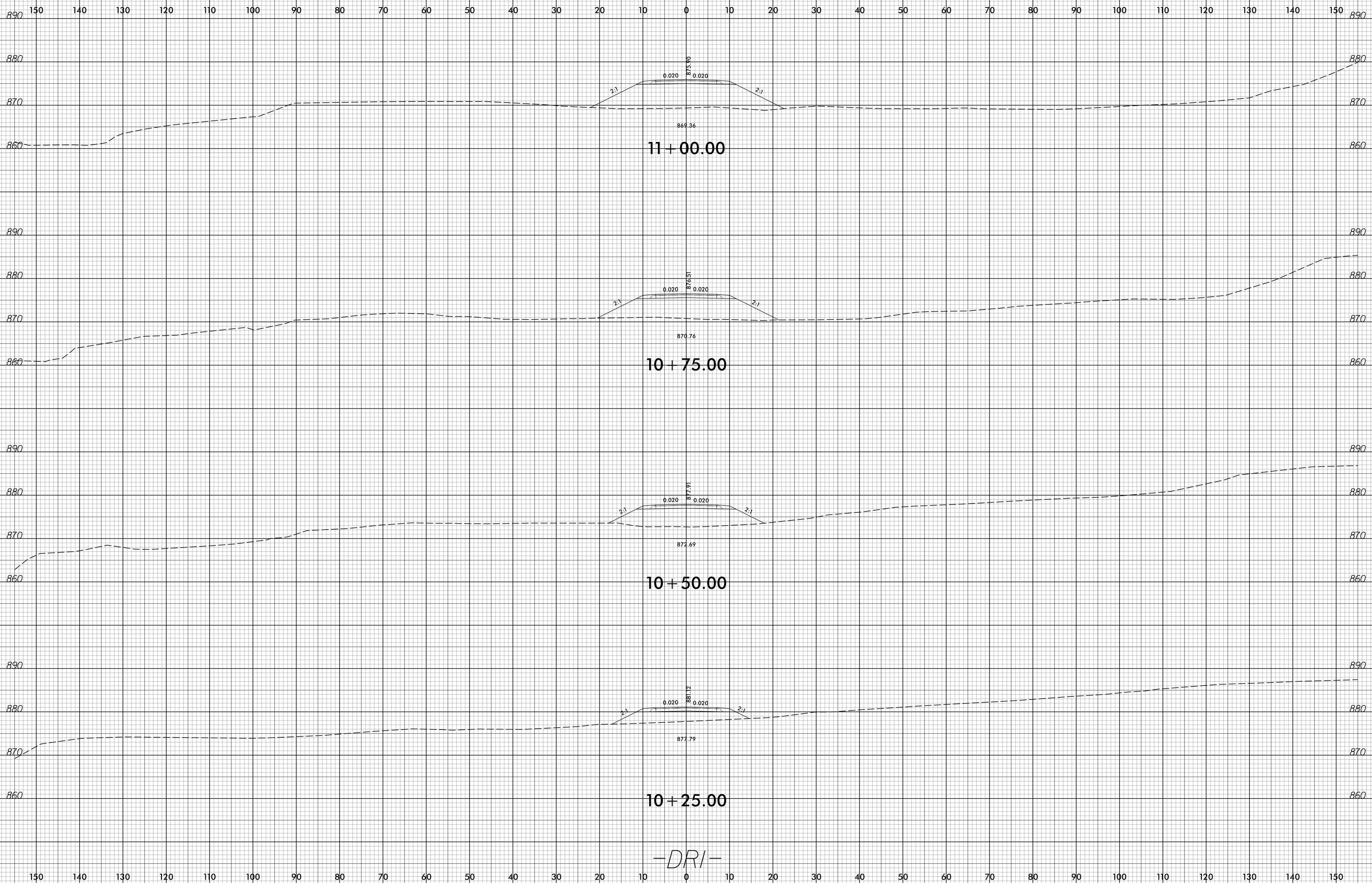
150 140 130 120 110 100 90 80 70 60 50 40 30 20 10 0 10 20 30 40 50 60 70 80 90 100 110 120 130 140 150

150 140 130 120 110 100 90 80 70 60 50 40 30 20 10 0 10 20 30 40 50 60 70 80 90 100 110 120 130 140 150



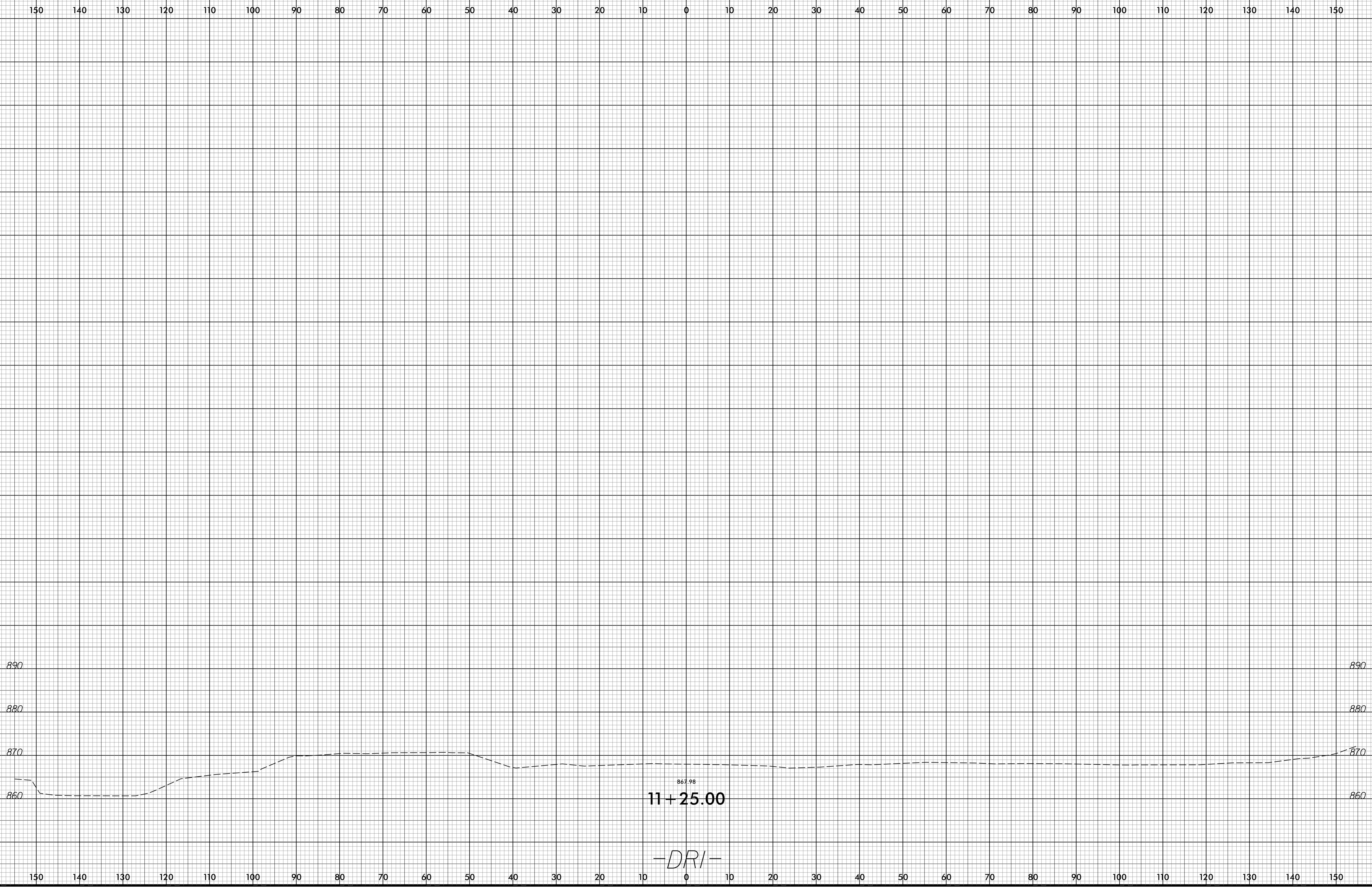
150 140 130 120 110 100 90 80 70 60 50 40 30 20 10 0 10 20 30 40 50 60 70 80 90 100 110 120 130 140 150

8/23/19

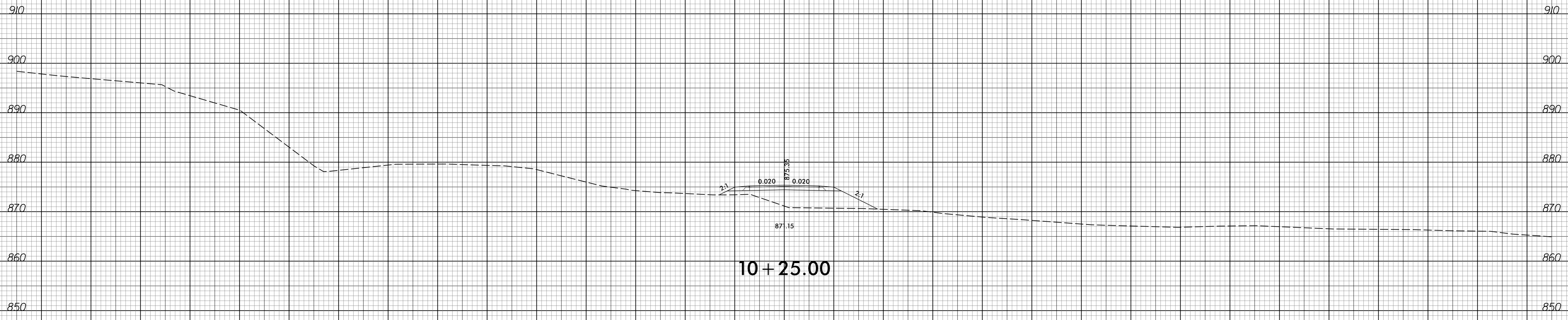
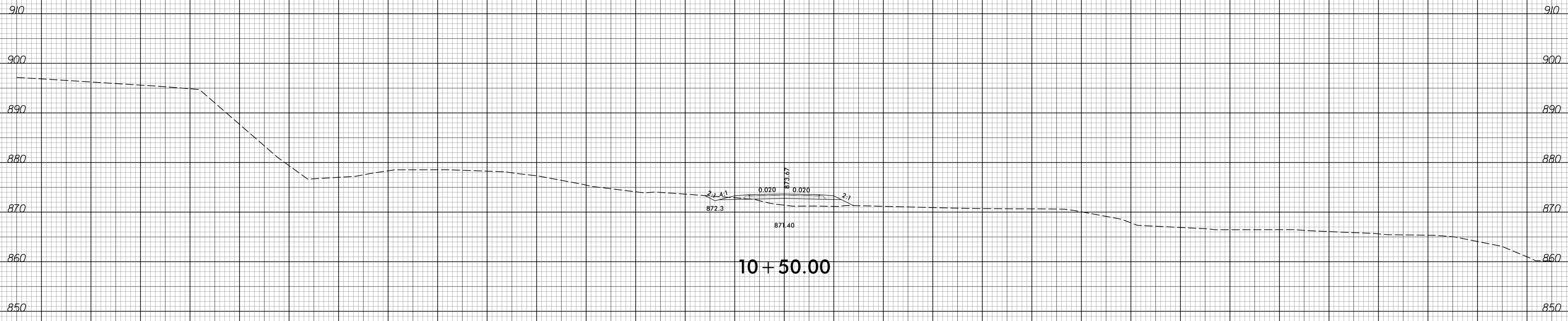


-DRI-

8/26/2016
F:\Roadway\CorridorModeling\B5397_Rdy_xp1_cm_DRI.dgn
USER:NAME



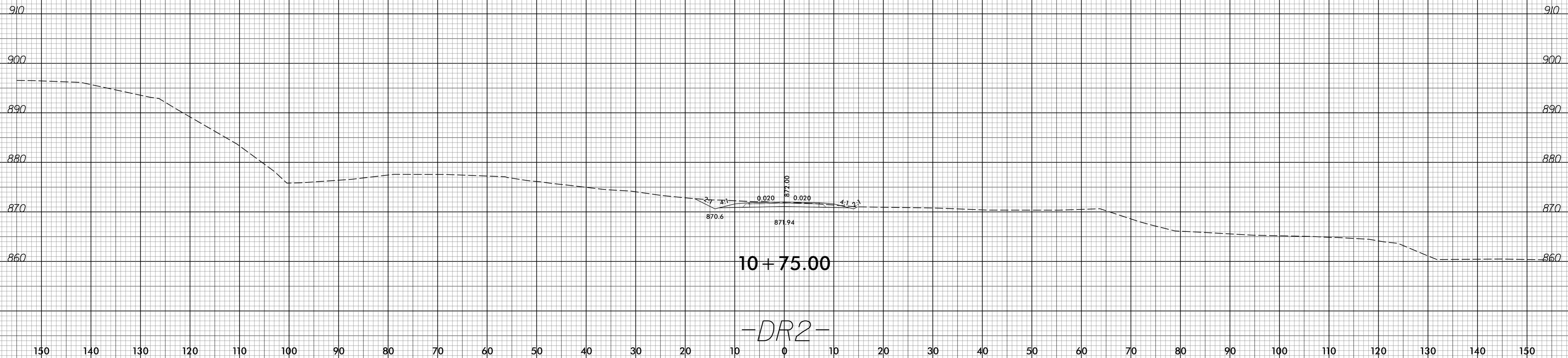
150 140 130 120 110 100 90 80 70 60 50 40 30 20 10 0 10 20 30 40 50 60 70 80 90 100 110 120 130 140 150



-DR2-

8/23/99

150 140 130 120 110 100 90 80 70 60 50 40 30 20 10 0 10 20 30 40 50 60 70 80 90 100 110 120 130 140 150



8/26/2016
F:\Roadway\Corridor\Mode\ing\B5397_Rdy_xp1_cm_DR2.dgn
USER:NAME