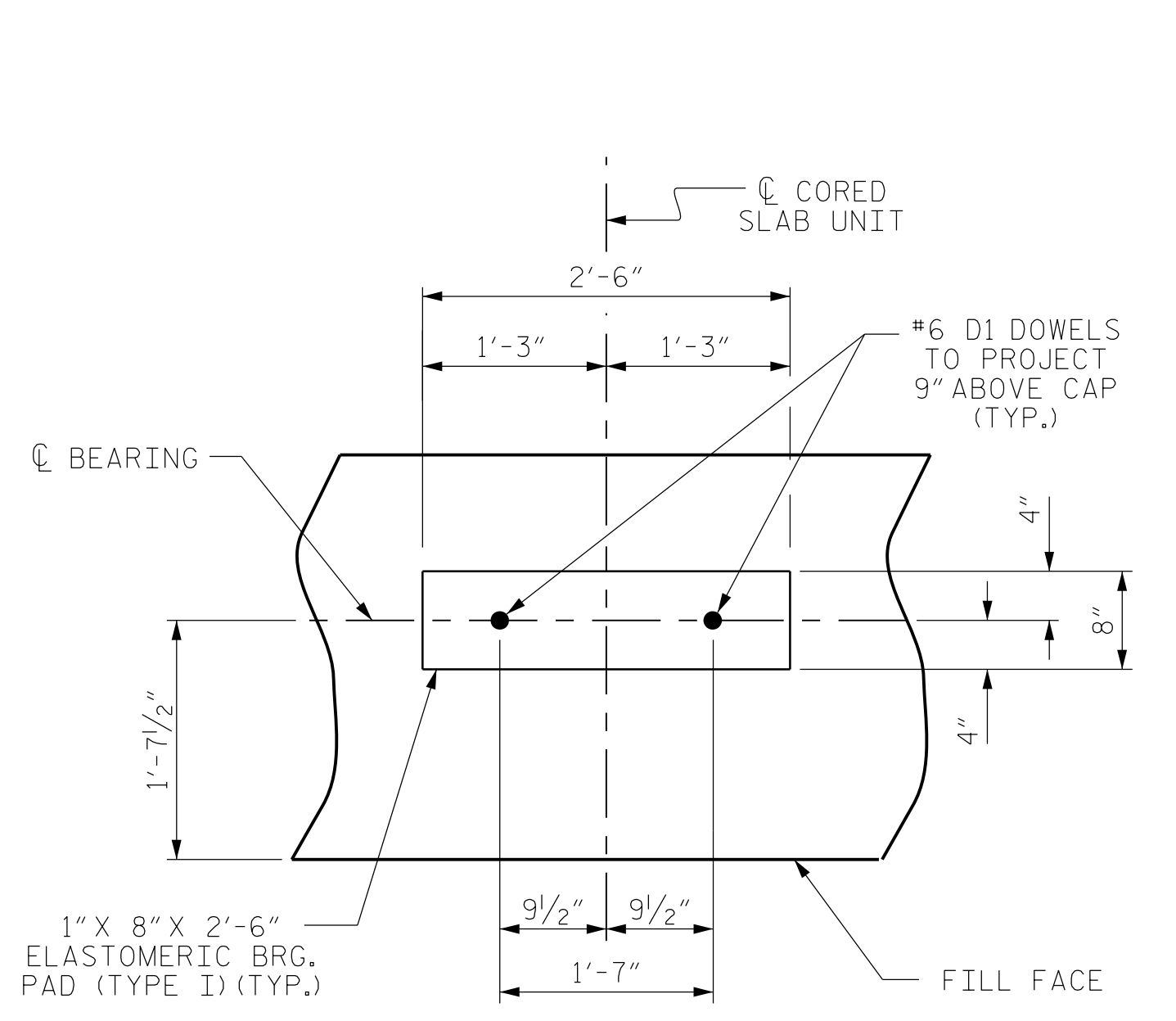


BAGGED STONE AND PIPE SHALL BE PLACED IMMEDIATELY AFTER COMPLETION OF END BENT EXCAVATION. PIPE MAY BE EITHER CONCRETE, CORRUGATED STEEL, CORRUGATED ALUMINUM ALLOY, OR CORRUGATED PLASTIC. PERFORATED PIPE WILL NOT BE ALLOWED.

BAGGED STONE SHALL REMAIN IN PLACE UNTIL THE ENGINEER DIRECTS THAT IT BE REMOVED. THE CONTRACTOR SHALL REMOVE AND DISPOSE OF SILT ACCUMULATIONS AT BAGGED STONE WHEN SO DIRECTED BY THE ENGINEER. BAGS SHALL BE REMOVED AND REPLACED WHENEVER THE ENGINEER DETERMINES THAT THEY HAVE DETERIORATED AND LOST THEIR EFFECTIVENESS.

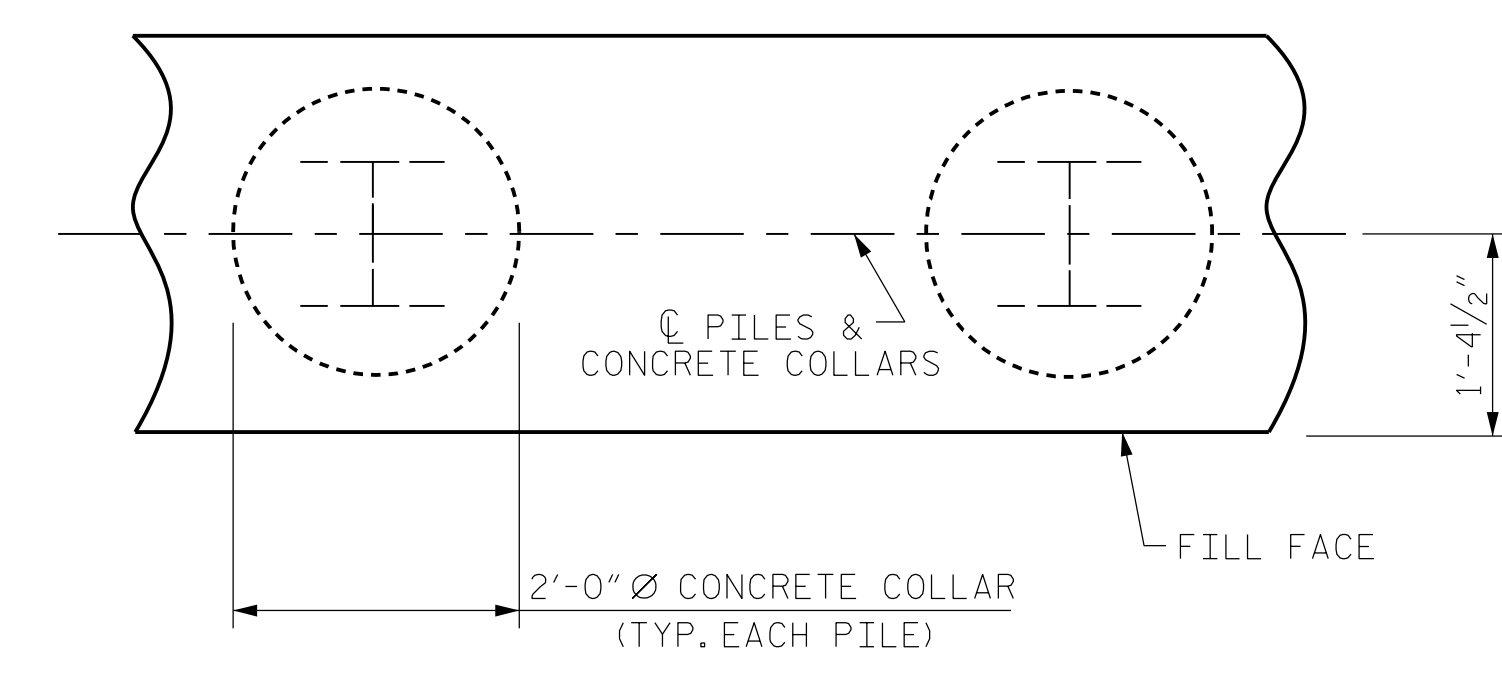
NO SEPARATE PAYMENT WILL BE MADE FOR THIS WORK AND THE ENTIRE COST OF THIS WORK SHALL BE INCLUDED IN THE UNIT CONTRACT PRICE BID FOR THE SEVERAL PAY ITEMS.

TEMPORARY DRAINAGE AT END BENT



DETAIL "A"

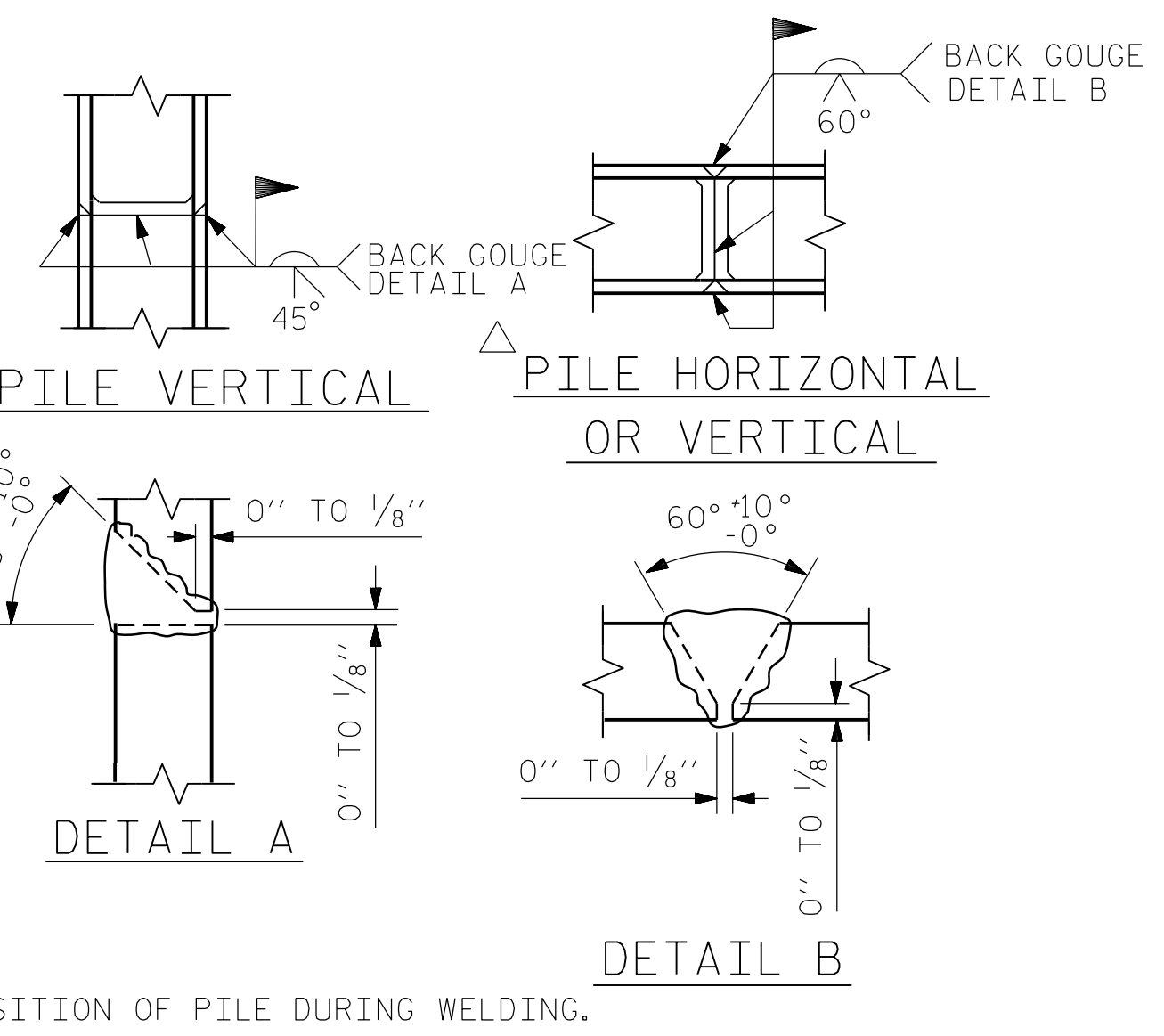
(END BENT No. 1 SHOWN, END BENT No. 2 SIMILAR BY ROTATION)



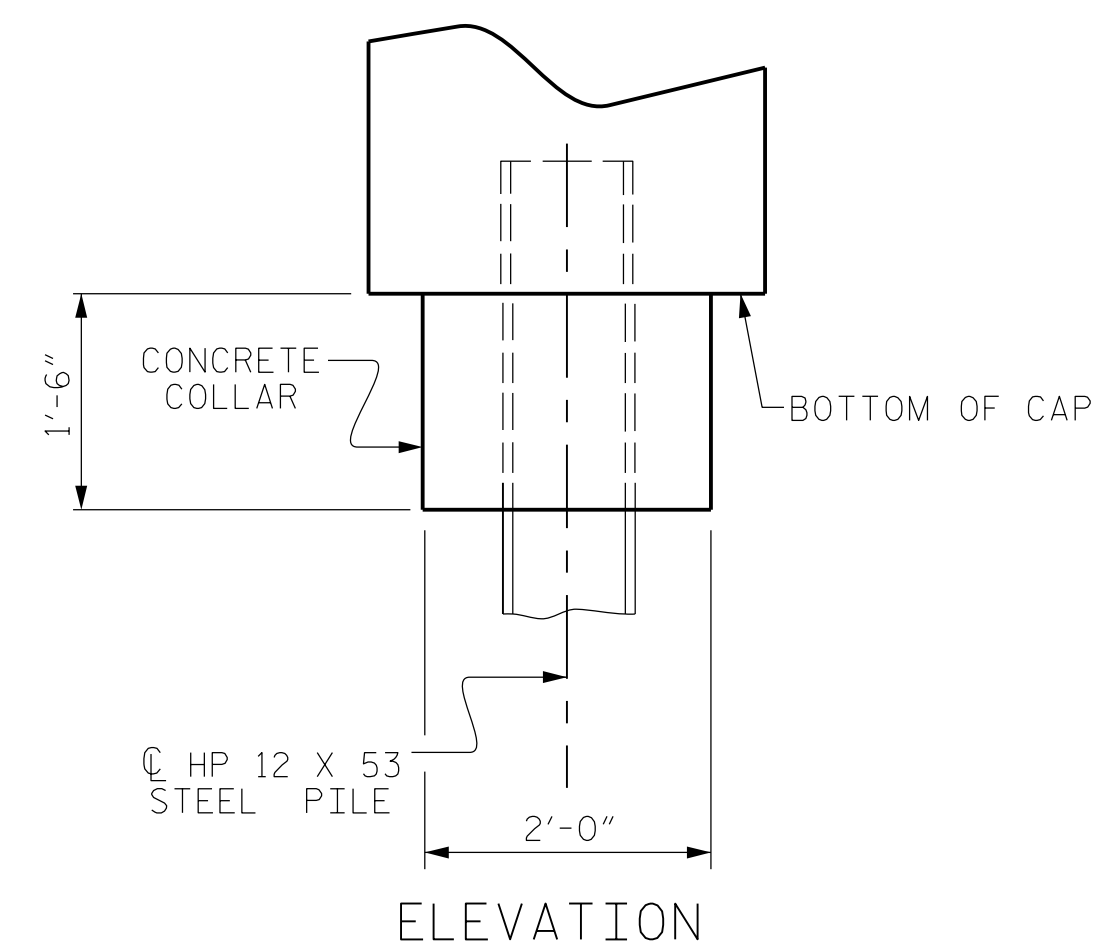
PLAN

CORROSION PROTECTION FOR STEEL PILES DETAIL

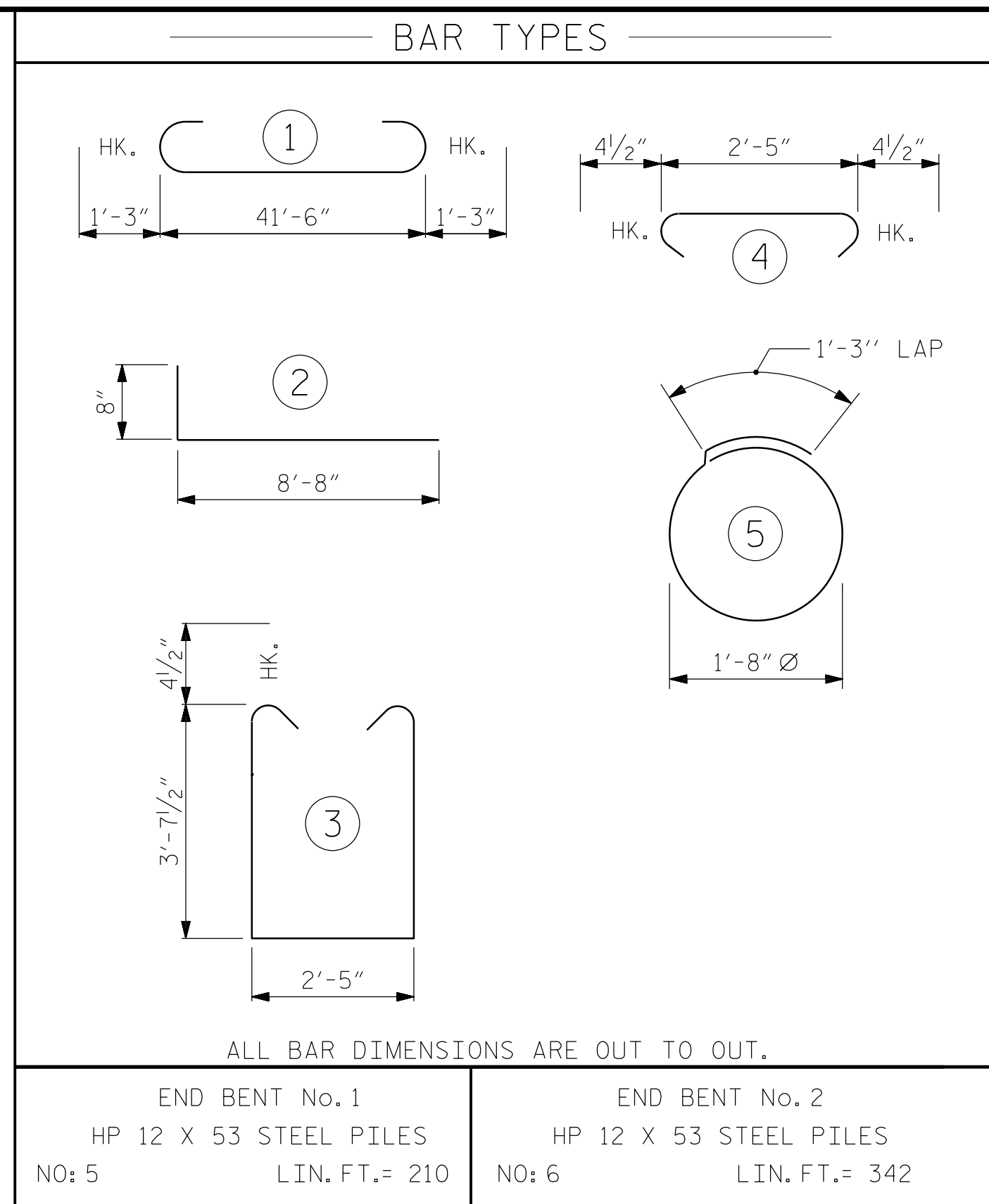
(END BENT No. 1 SHOWN, END BENT No. 2 SIMILAR BY ROTATION)



PILE SPLICE DETAILS

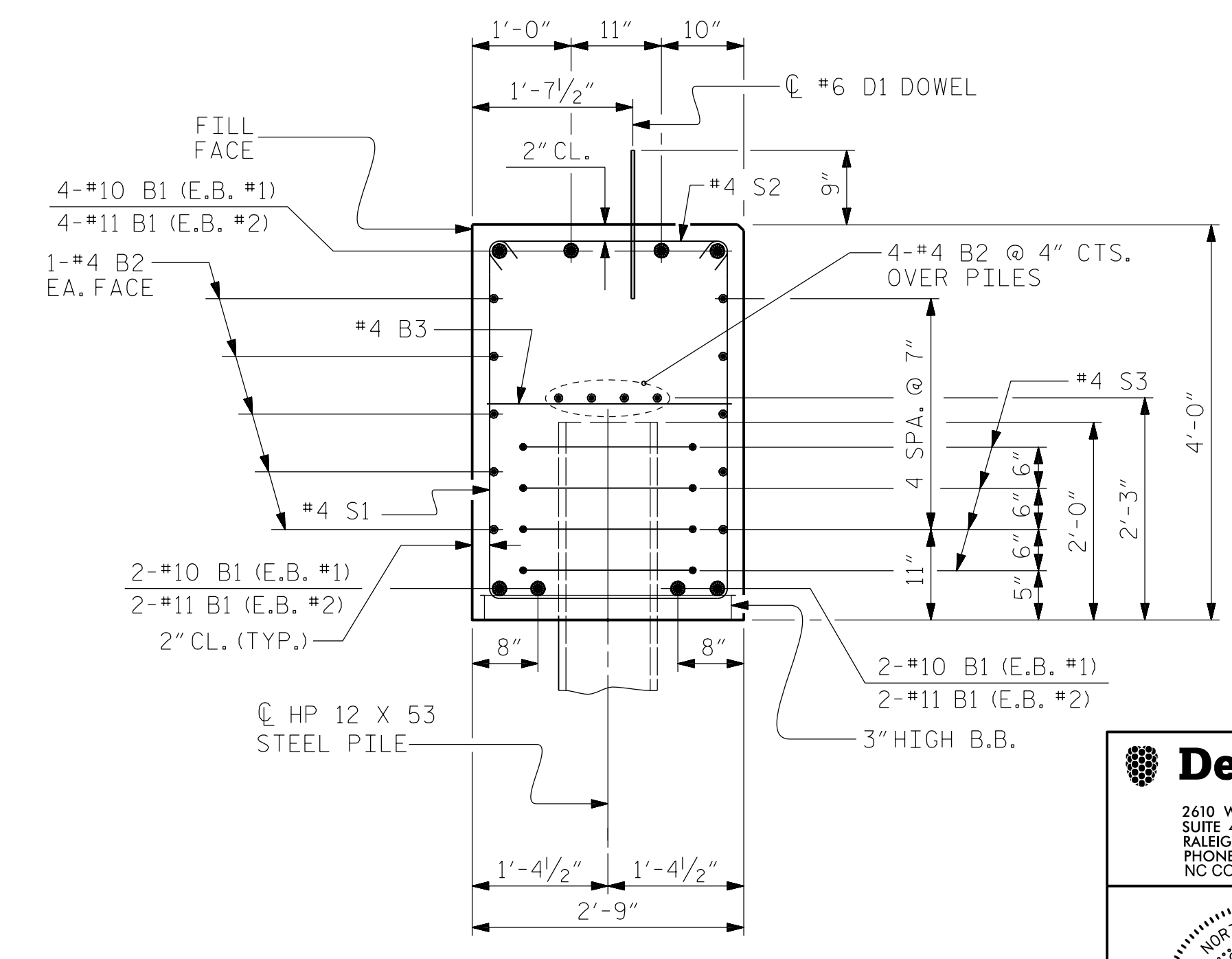


ELEVATION



END BENT No. 1	END BENT No. 2
HP 12 X 53 STEEL PILES	HP 12 X 53 STEEL PILES
NO: 5	NO: 6
LIN. FT.= 210	LIN. FT.= 342

BILL OF MATERIAL FOR END BENT No. 1						BILL OF MATERIAL FOR END BENT No. 2					
BAR NO.	SIZE	TYPE	LENGTH	WEIGHT		BAR NO.	SIZE	TYPE	LENGTH	WEIGHT	
B1	#8		44'-0"	1515		B1	#8		44'-0"	1870	
B2	#4	STR	22'-1"	413		B2	#4	STR	22'-1"	413	
B3	#4	STR	2'-5"	18		B3	#4	STR	2'-5"	18	
D1	#6	STR	1'-6"	54		D1	#6	STR	1'-6"	54	
H1	#4	2	9'-4"	249		H1	#4	2	9'-4"	249	
K1	#4	STR	2'-11"	31		K1	#4	STR	2'-11"	31	
S1	#4	3	10'-5"	376		S1	#4	3	10'-5"	376	
S2	#4	4	3'-2"	114		S2	#4	4	3'-2"	114	
S3	#4	5	6'-6"	87		S3	#4	5	6'-6"	104	
V1	#4	STR	6'-2"	214		V1	#4	STR	6'-2"	214	
REINFORCING STEEL (FOR END BENT No. 1)					3071 LBS.	REINFORCING STEEL (FOR END BENT No. 2)					3443 LBS.
CLASS A CONCRETE BREAKDOWN (FOR END BENT No. 1)						CLASS A CONCRETE BREAKDOWN (FOR END BENT No. 2)					
POUR #1	CAP, LOWER PART OF WINGS & COLLARS			20.4 C.Y.		POUR #1	CAP, LOWER PART OF WINGS & COLLARS			20.5 C.Y.	
POUR #2	UPPER PART OF WINGS			2.1 C.Y.		POUR #2	UPPER PART OF WINGS			2.1 C.Y.	
TOTAL CLASS A CONCRETE					22.5 C.Y.	TOTAL CLASS A CONCRETE					22.6 C.Y.



SECTION A-A

(CONCRETE COLLAR NOT SHOWN FOR CLARITY. SEE "CORROSION PROTECTION FOR STEEL PILES DETAIL.")

PROJECT NO. B-5333
 ROBESON COUNTY
 STATION: 37+28.50 -L-
 SHEET 4 OF 4 BRIDGE NO. 174

Dewberry
 2610 WYCLIFF ROAD
 SUITE 410
 RALEIGH, NC 27607
 PHONE: 919.881.9939
 NC COA No. F-0929

JENNIFER R. McROY
 ENGINEER
 SEAL 032076
 12/9/2016

STATE OF NORTH CAROLINA DEPARTMENT OF TRANSPORTATION RALEIGH					
SUBSTRUCTURE					
END BENT No. 1 & 2 DETAILS					
REVISIONS					
No.	BY:	DATE:	No.	BY:	DATE:
1			3		
2			4		

SHEET No. S02-18
 TOTAL SHEETS 23

12/9/2016 8:49:24 AM EBTDTL.S.dgn
 USER: jmerrou

DRAWN BY: MTB DATE: 04/16
 CHECKED BY: JRM DATE: 04/16