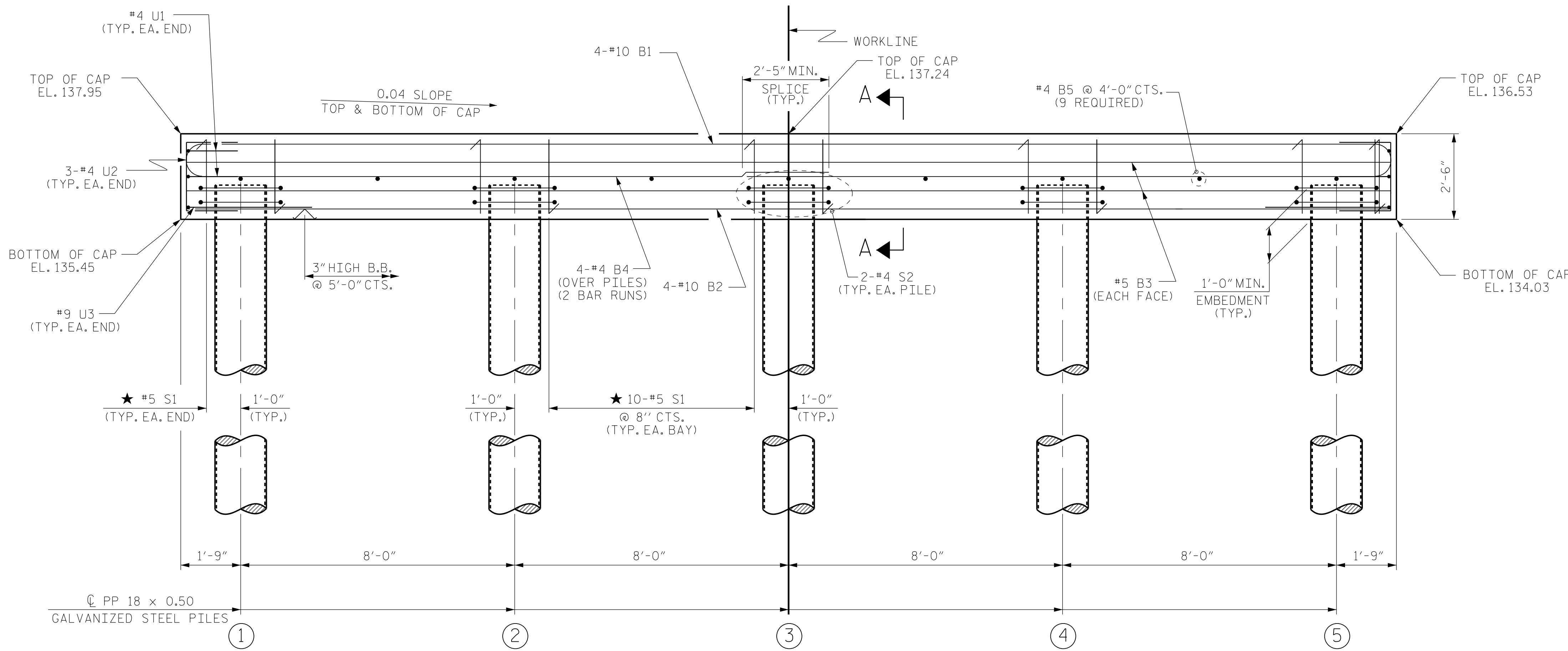
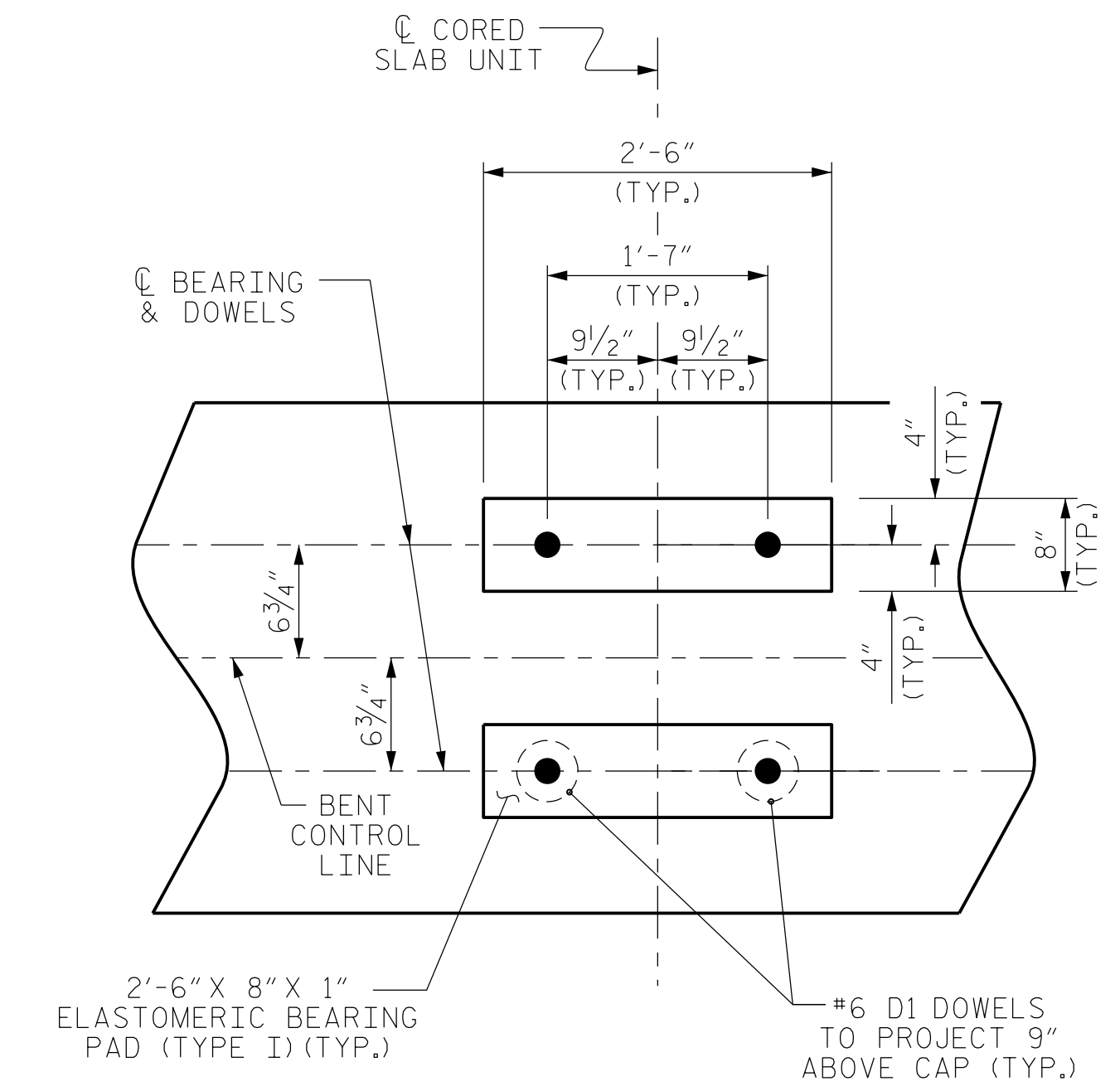
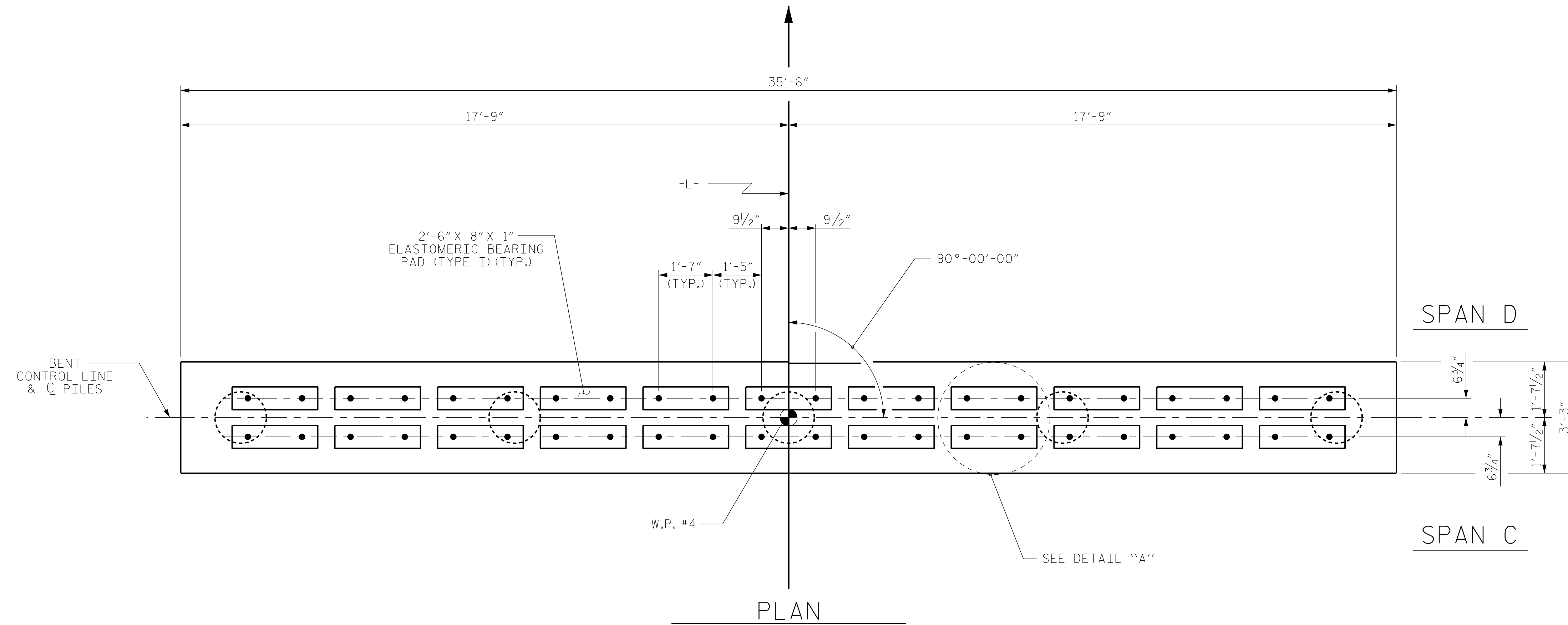


NOTES

- STIRRUPS IN CAP MAY BE SHIFTED AS NECESSARY TO CLEAR DOWELS.
- ★ INVERT ALTERNATE STIRRUPS.
- FOR ADDITIONAL REINFORCING STEEL IN PP 18 x 0.50 GALVANIZED STEEL PILES, SEE SHEET 3 OF 3.
- GALVANIZE THE TOP OF EACH INTERIOR BENT PILE A MINIMUM OF 27 FEET, GALVANIZE IN ACCORDANCE WITH SECTION 1076 OF THE STANDARD SPECIFICATIONS.



TOP OF PILE ELEVATIONS	
①	136.41
②	136.09
③	135.77
④	135.45
⑤	135.13

PROJECT NO. B-5333
ROBESON COUNTY
 STATION: 21+57.00 -L-

SHEET 1 OF 3 BRIDGE NO. 173

Dewberry
 2610 WYCLIFF ROAD
 SUITE 410
 RALEIGH, NC 27607
 PHONE: 919.881.9939
 NC COA No. F-0929

SEAL
 032076
 ENGINEER
 JENNIFER R. McROY

DocuSigned by:
 Jennifer R. McRoy
 6/6/2016
 E114C791288475

STATE OF NORTH CAROLINA
 DEPARTMENT OF TRANSPORTATION
 RALEIGH

SUBSTRUCTURE
 BENT No. 3

REVISIONS					
No.	BY	DATE	No.	BY	DATE
1			3		
2			4		

SHEET No.
S01-18
 TOTAL SHEETS
 24

ELEVATION

FOR SECTION A-A, SEE SHEET 2 OF 3

DRAWN BY : MTB DATE : 04/16
 CHECKED BY : JRM DATE : 04/16

6/2/2016 8:57:02 AM
 USER: mbelisle