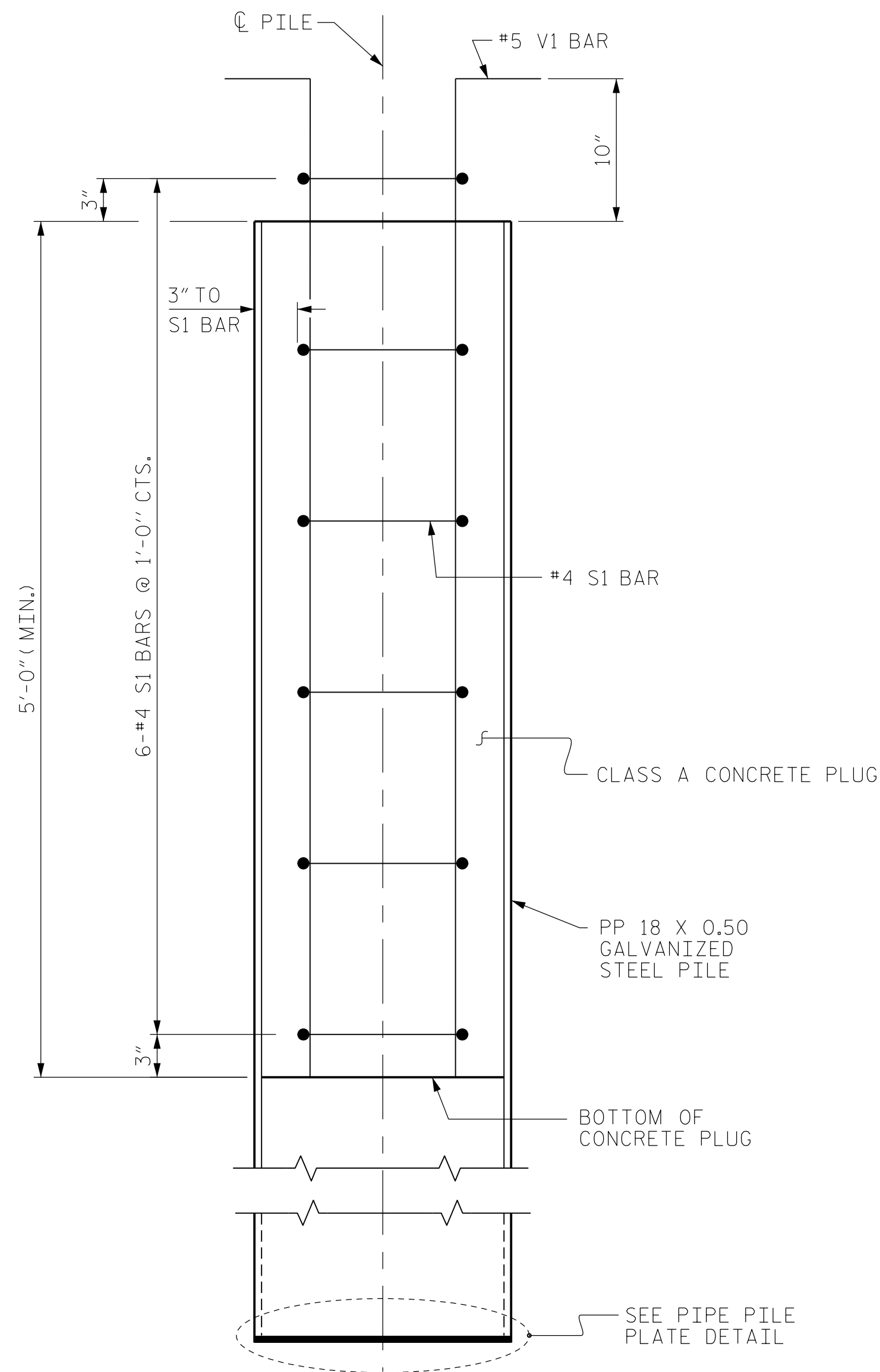
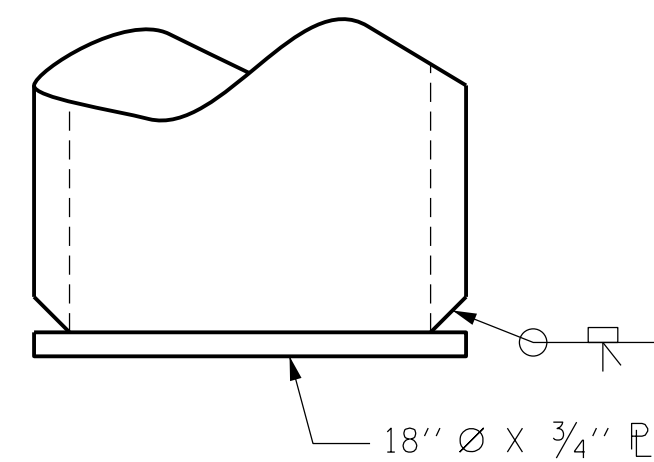


PLAN

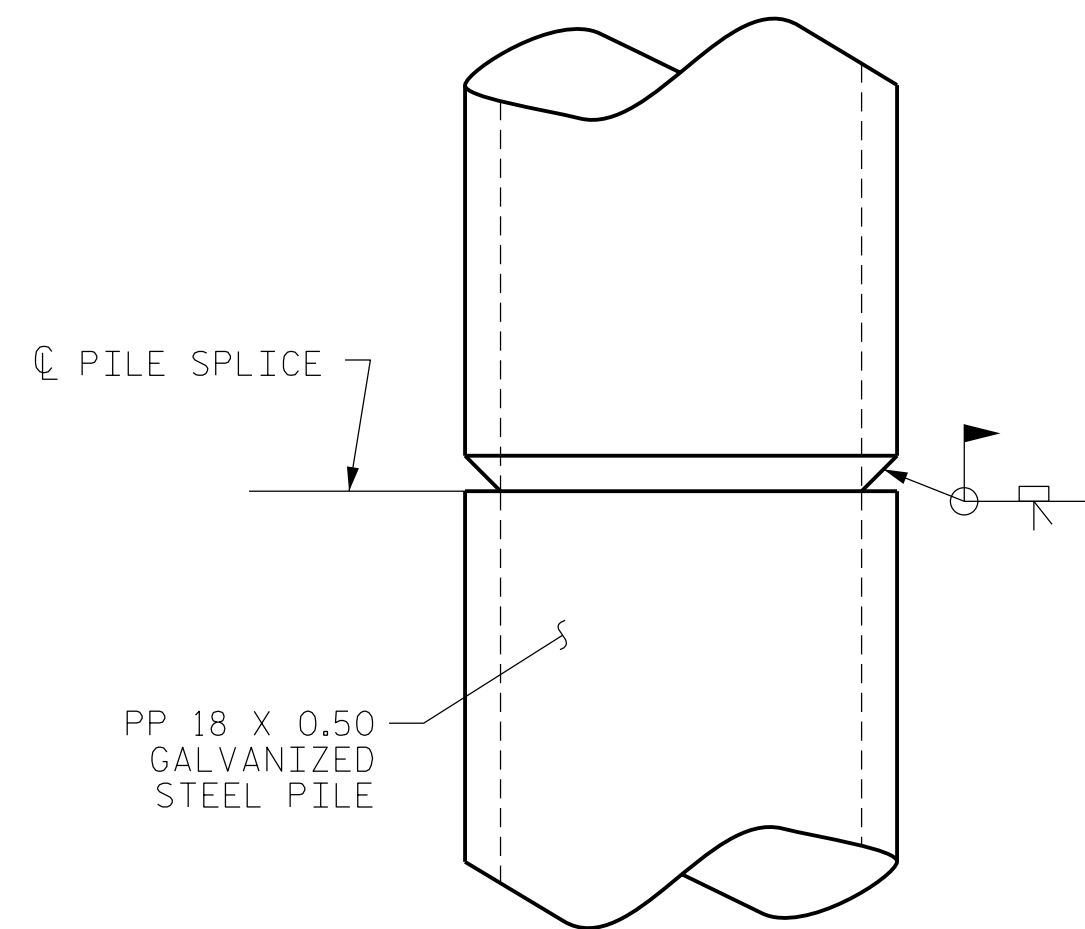


ELEVATION

PP 18 X 0.50 GALVANIZED STEEL PILE
(CLOSED END)



PIPE PILE PLATE DETAIL



PIPE PILE SPLICE DETAIL

NOTES

PIPE PILES SHALL BE IN ACCORDANCE WITH SECTION 1084 OF THE STANDARD SPECIFICATIONS.

GALVANIZE STEEL PIPE PILES IN ACCORDANCE WITH SECTION 1076 OF THE STANDARD SPECIFICATIONS UNLESS METALLIZING IS REQUIRED. GALVANIZING OR METALLIZING PIPE PILE PLATES IS NOT REQUIRED.

PIPE PILE PLATES, SHALL BE IN ACCORDANCE WITH SECTION 450 OF THE STANDARD SPECIFICATIONS.

REMOVE AND REPLACE OR REPAIR TO THE SATISFACTION OF THE ENGINEER PILES THAT ARE DAMAGED, DEFORMED OR COLLAPSED DURING INSTALLATION OR DRIVING.

PILE SPLICES SHALL BE IN ACCORDANCE WITH THE STANDARD SPECIFICATIONS AND AWS D1.1.

FOR CLOSED END PIPE PILES, REMOVE ALL SOIL AND WATER FROM INSIDE THE PILES JUST PRIOR TO PLACING REINFORCING STEEL AND CONCRETE FOR THE CONCRETE PLUG.

FORM THE CONCRETE PLUG SUCH THAT THE REINFORCING STEEL OR CONCRETE DOES NOT MOVE AND THE CLEARANCE FROM THE REINFORCING STEEL TO THE INSIDE OF THE PILE IS MAINTAINED AFTER CONCRETE PLACEMENT. DO NOT PLACE CONCRETE IN THE BENT CAP UNTIL THE CONCRETE PLUG HAS ATTAINED A MINIMUM COMPRESSIVE STRENGTH OF 1500 PSI.

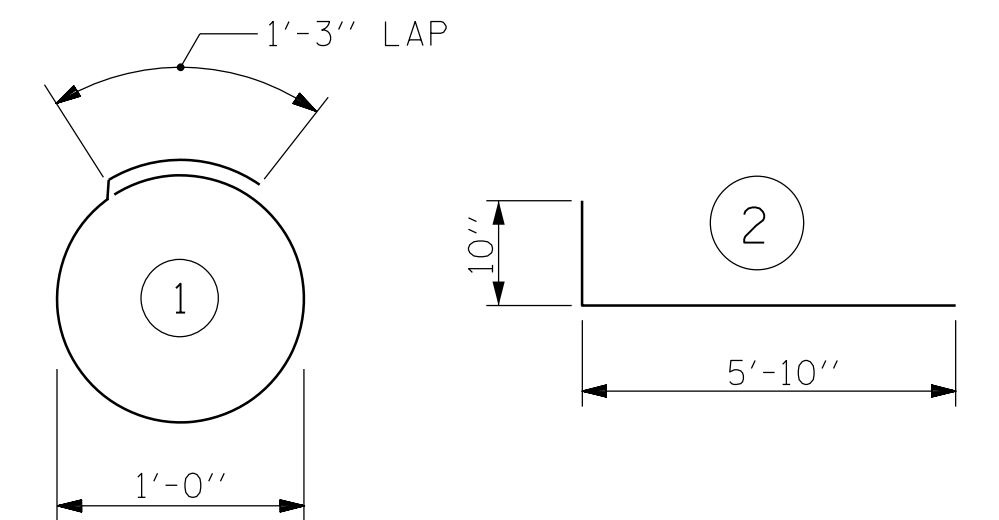
THE REINFORCING STEEL, CLASS A CONCRETE, AND GALVANIZING ARE CONSIDERED INCIDENTAL TO THE CONTRACT UNIT PRICE BID PER LINEAR FOOT FOR PP 18 X 0.50 GALVANIZED STEEL PILES.

BILL OF MATERIAL FOR ONE
PP 18 X 0.50 GALVANIZED STEEL PILE

BAR	NO.	SIZE	TYPE	LENGTH	WEIGHT
S1	6	#4	1	4'-5"	18
V1	8	#5	2	6'-8"	56
REINFORCING STEEL =				74	lbs

CLASS A CONCRETE
5'-0" MINIMUM PLUG 0.3 CY

BAR TYPES

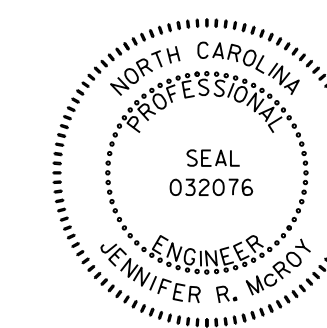


ALL BAR DIMENSIONS ARE OUT TO OUT.

PROJECT NO. B-5333
ROBESON
21+57.00 -L-

SHEET 3 OF 3 BRIDGE NO. 173

Dewberry
2301 REYWOODS DRIVE
SUITE 200
RALEIGH, NC 27607
PHONE: 919.881.9939
NC COA No. F-0929



Designed by:
Jennifer R. McRoy 6/6/2016

STATE OF NORTH CAROLINA
DEPARTMENT OF TRANSPORTATION
RALEIGH
STANDARD
18" STEEL PIPE PILE
BENT No. 2

REVISIONS						SHEET No.
No.	BY:	DATE:	No.	BY:	DATE:	TOTAL SHEETS
1			3			24
2			4			

6/2/2016 3:33:54 PM 173.BENT2-3.dgn USER: mcelisla

ASSEMBLED BY : MTB	DATE : 04/16
CHECKED BY : JRM	DATE : 04/16
DRAWN BY : RWW 1/01	REV. 10/1/05 LBG/TLA
CHECKED BY : LES 1/01	REV. 5/1/06R MAA/KMM
	REV. 10/1/11 MAA/GM