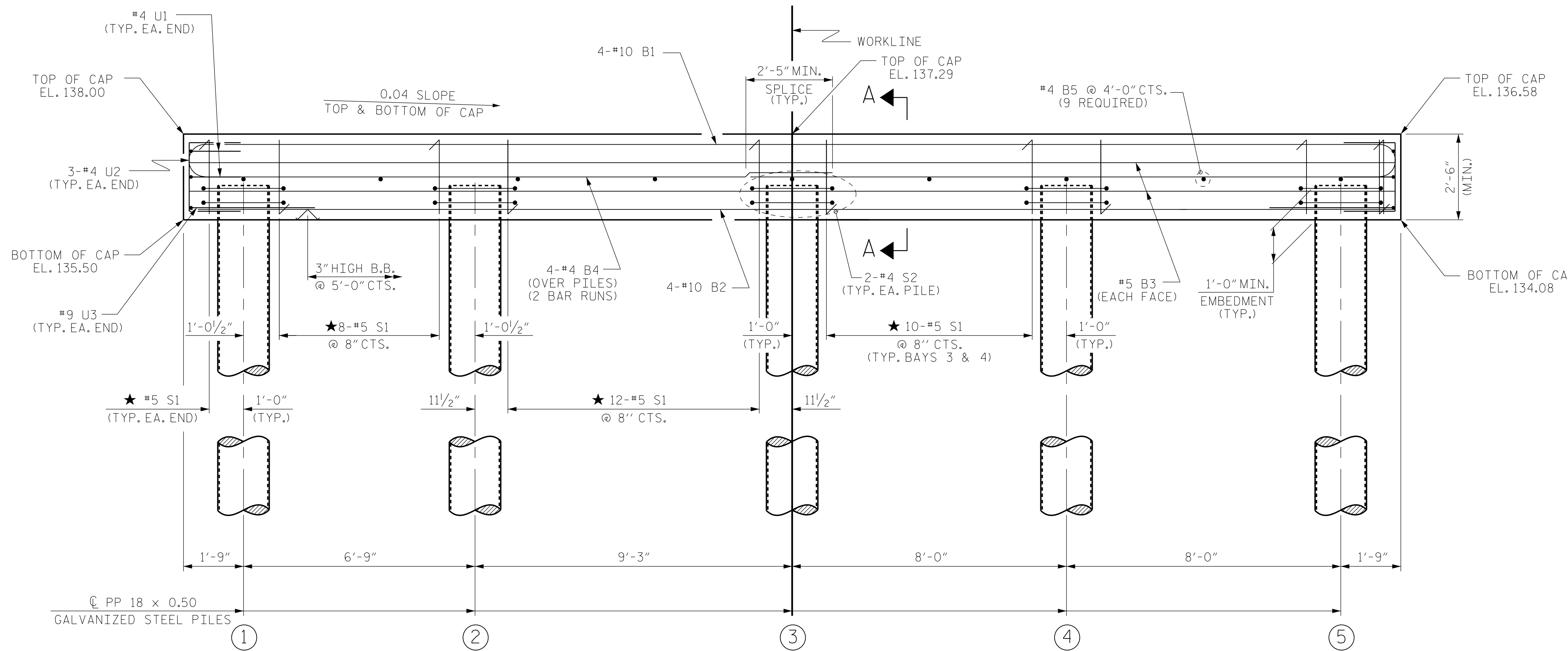
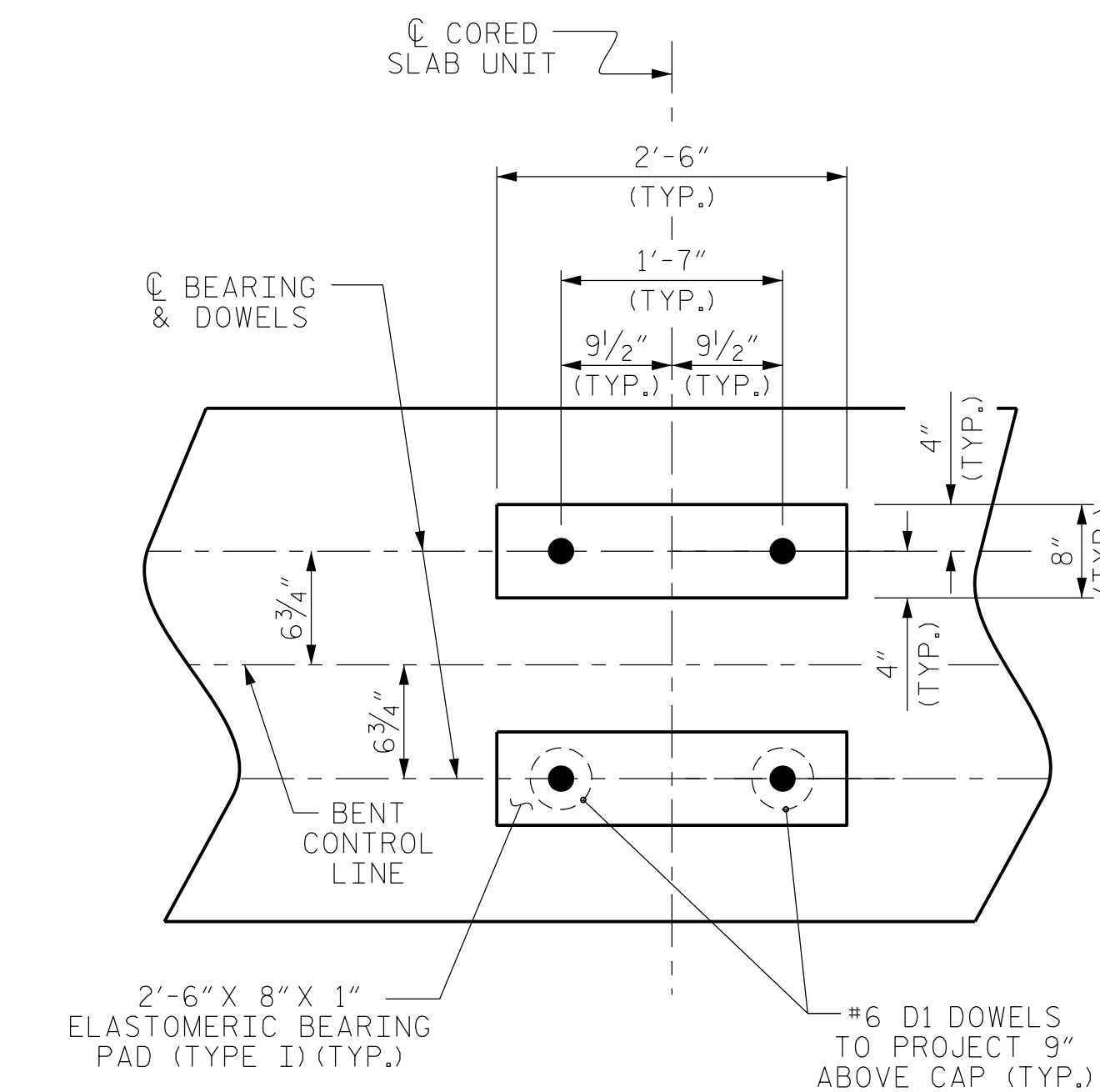
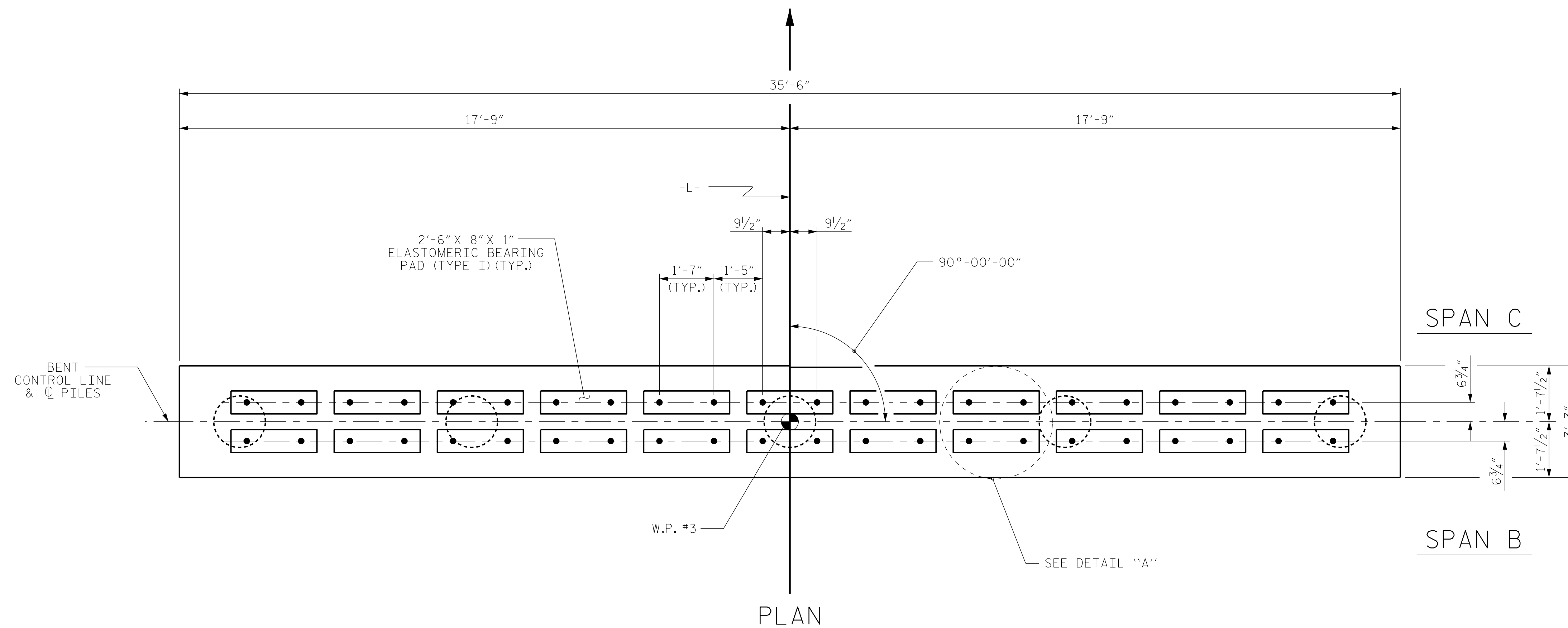


### NOTES

- STIRRUPS IN CAP MAY BE SHIFTED AS NECESSARY TO CLEAR DOWELS.
- ★ INVERT ALTERNATE STIRRUPS.
- FOR ADDITIONAL REINFORCING STEEL IN PP 18 x 0.50 GALVANIZED STEEL PILES, SEE SHEET 3 OF 3.
- GALVANIZE THE TOP OF EACH INTERIOR BENT PILE A MINIMUM OF 27 FEET, GALVANIZE IN ACCORDANCE WITH SECTION 1076 OF THE STANDARD SPECIFICATIONS.



| TOP OF PILE ELEVATIONS |        |
|------------------------|--------|
| ①                      | 136.46 |
| ②                      | 136.19 |
| ③                      | 135.82 |
| ④                      | 135.50 |
| ⑤                      | 135.18 |

PROJECT NO. B-5333  
 ROBESON COUNTY  
 STATION: 21+57.00 -L-

SHEET 1 OF 3 BRIDGE NO. 173

**Dewberry**  
 2610 WYCLIFF ROAD  
 SUITE 410  
 RALEIGH, NC 27607  
 PHONE: 919.881.9939  
 NC COA No. F-0929

NORTH CAROLINA PROFESSIONAL ENGINEER  
 SEAL 032076  
 JENNIFER R. McROY

Drawn/Checked by:  
 Jennifer R. McRoy/6/2016

STATE OF NORTH CAROLINA  
 DEPARTMENT OF TRANSPORTATION  
 RALEIGH

SUBSTRUCTURE  
 BENT No. 2

| REVISIONS |     |       |     |     |       |
|-----------|-----|-------|-----|-----|-------|
| No.       | BY: | DATE: | No. | BY: | DATE: |
| 1         |     |       | 3   |     |       |
| 2         |     |       | 4   |     |       |

SHEET No. S01-15  
 TOTAL SHEETS 24

6/23/16 8:53 AM 173.BENT2-1.dgn  
 USER: mbelisle

DRAWN BY : MTB DATE : 04/16  
 CHECKED BY : JRM DATE : 04/16