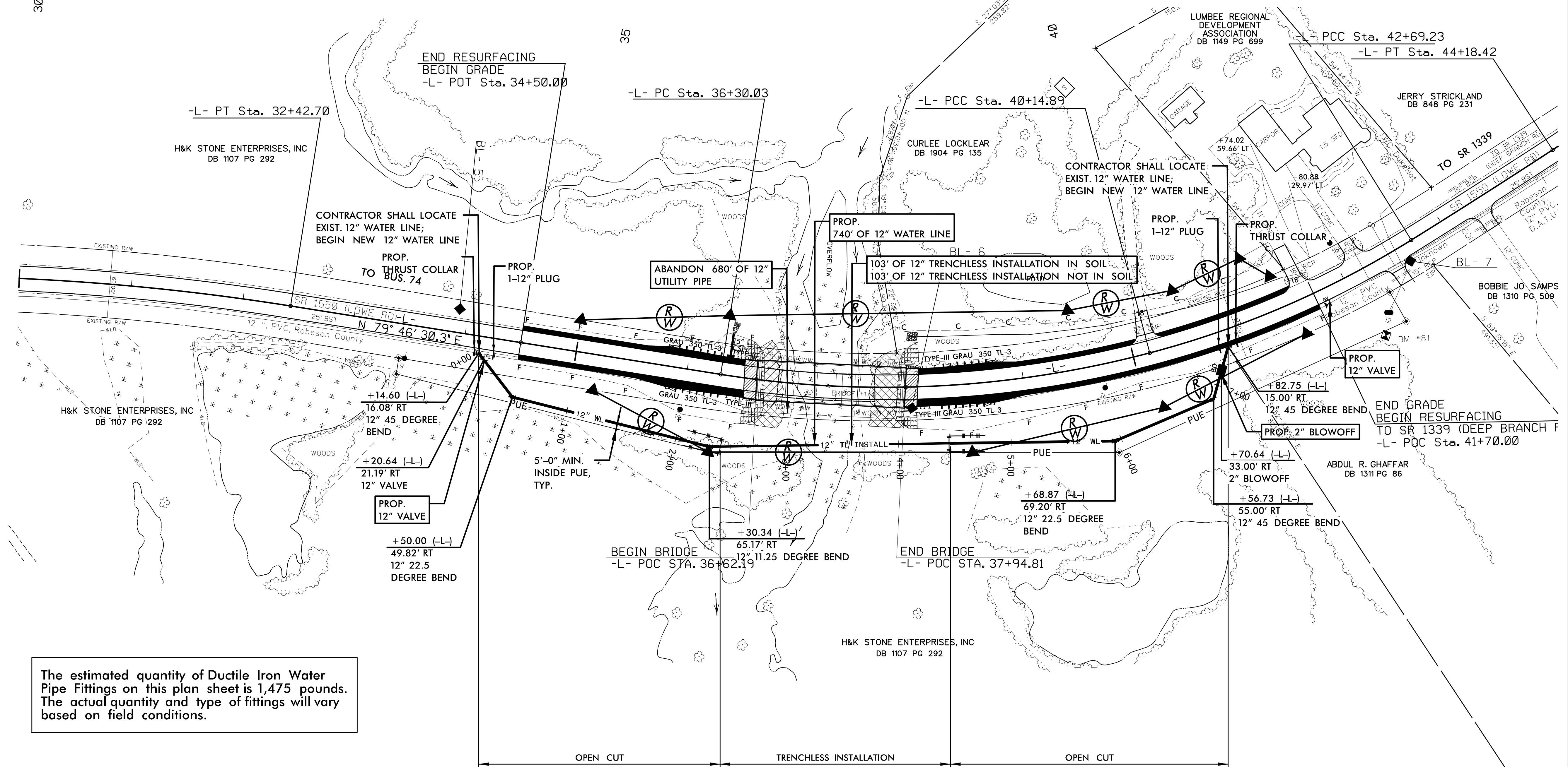


WATER LINES OWNED BY ROBESON COUNTY

PREPARED IN THE OFFICE OF: THE WOOTEN COMPANY <small>ENGINEERING PLANNING ARCHITECTURE</small> <small>120 North Robeson Avenue Raleigh, NC 27603-1423</small> <small>919.876.0311 fax 919.876.0309</small> <small>License Number: F-0115</small>	PROJECT REFERENCE NO. B-5333	SHEET NO. UC-5
DESIGNED BY: JRG DRAWN BY: TK CHECKED BY: JRG APPROVED BY: JRG REVISED:		
VERTICAL SCALE 	HORIZONTAL SCALE 	
ONLY WATER LINE CONSTRUCTION SHOWN ON THIS SHEET		
NORTH CAROLINA DEPARTMENT OF TRANSPORTATION UTILITIES ENGINEERING SEC. PHONE: (919) 707-6690 FAX: (919) 250-4151		

UTILITY CONSTRUCTION



The estimated quantity of Ductile Iron Water Pipe Fittings on this plan sheet is 1,475 pounds. The actual quantity and type of fittings will vary based on field conditions.

PROPOSED BRIDGE REPLACEMENT SHOWN IN BACKGROUND FOR REFERENCE PURPOSES ONLY