

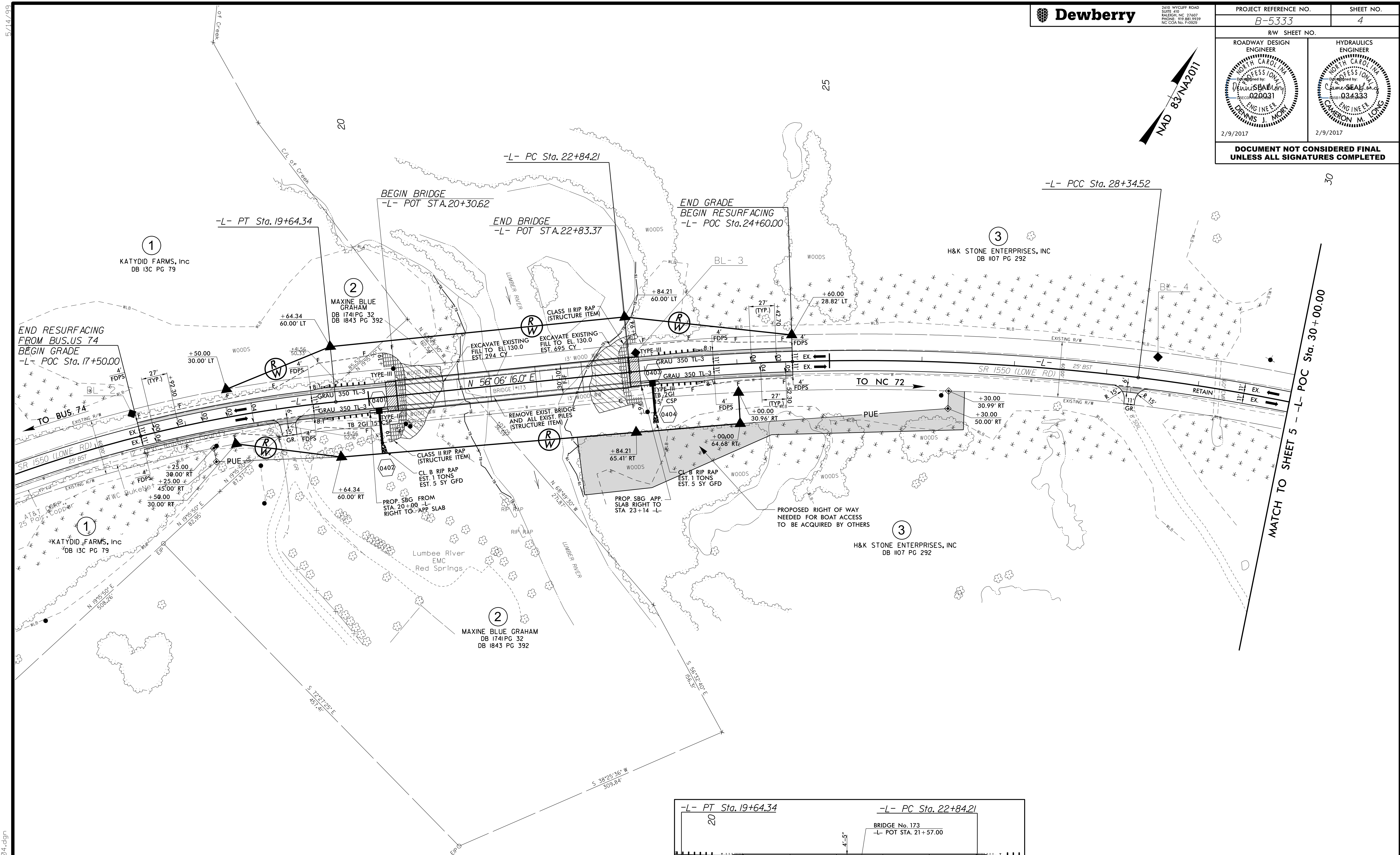
RW SHEET NO. _____ HYDRAULICS ENGINEER

ROADWAY DESIGN ENGINEER

2/9/2017

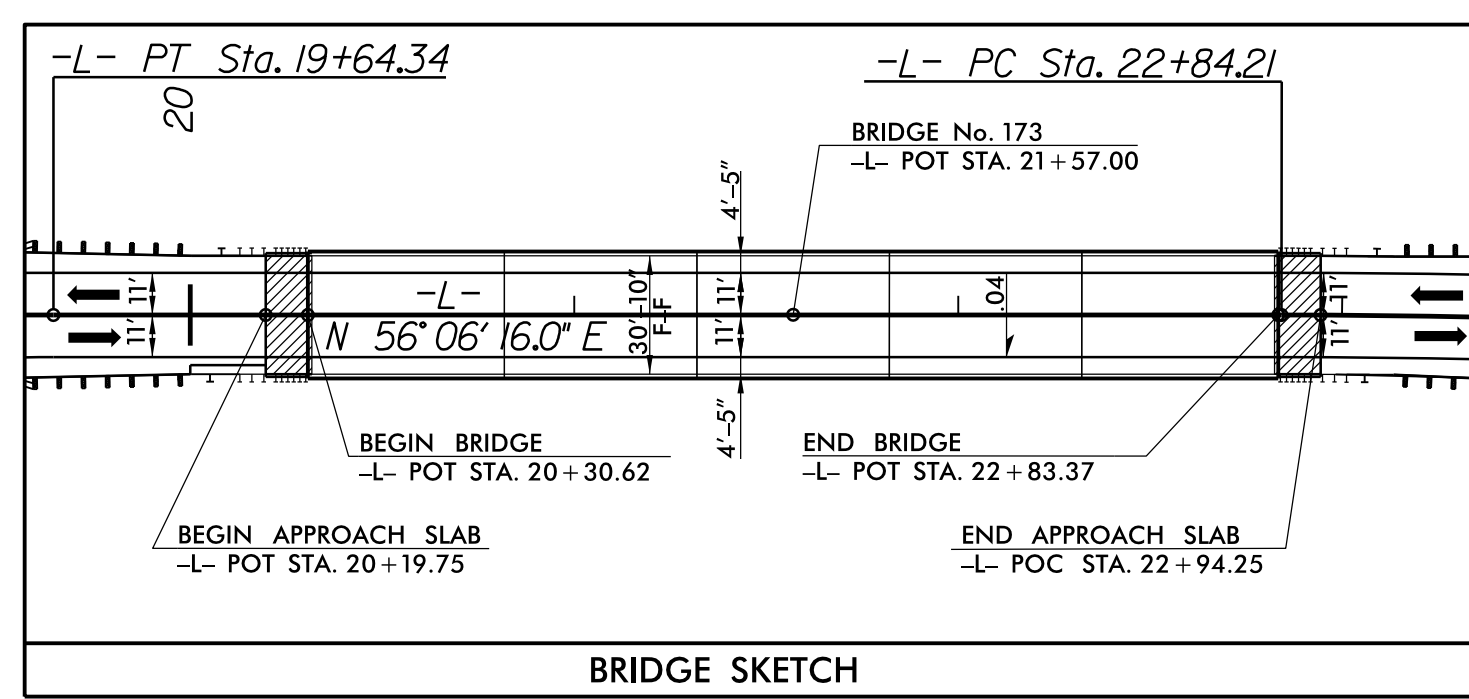
2/9/2017

**DOCUMENT NOT CONSIDERED FINAL
UNLESS ALL SIGNATURES COMPLETED**



CURVE DATA FOR -L-

PI Sta	PI Sta	PI Sta	PI Sta
6+91.78	15+77.22	25+60.50	30+39.23
$\Delta = 3^\circ 40' 02.1''$ (RT)	$\Delta = 31^\circ 02' 28.8''$ (RT)	$\Delta = 12^\circ 44' 21.9''$ (RT)	$\Delta = 10^\circ 55' 52.5''$ (RT)
$D = 3^\circ 00' 00.0''$	$D = 3^\circ 54' 29.9''$	$D = 2^\circ 18' 53.9''$	$D = 2^\circ 40' 40.9''$
$L = 122.24'$	$L = 794.24'$	$L = 550.30'$	$L = 408.18'$
$T = 61.14'$	$T = 407.13'$	$T = 276.29'$	$T = 204.71'$
$R = 1,909.86'$	$R = 1,466.00'$	$R = 2,475.00'$	$R = 2,139.47'$
$SE = MATCH EXIST.$	$SE = .04$	$SE = .04$	$SE = MATCH EXIST.$
	$RUNOFF = 108.00'$	$RUNOFF = 108.00'$	



- NOTES:**
- FIELD ADJUSTMENT AS NEEDED FOR TYPE III ANCHOR UNITS.
 - ALL DRIVEWAY RADII ARE 10' UNLESS OTHERWISE NOTED.
- UNCLASSIFIED STRUCTURE EXCAVATION
- SEE SHEET 6 FOR -L- PROFILE
SEE SHEETS S01-1 THRU S01-24 FOR STRUCTURE PLANS

2/6/2017 8:47:16 AM Rdy_psh_04.dgn