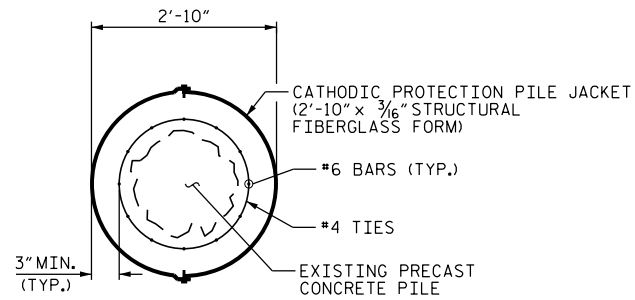
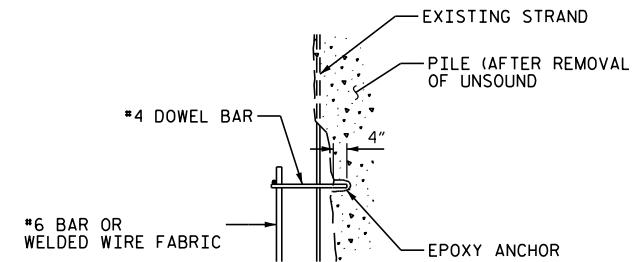


SECTION E-E



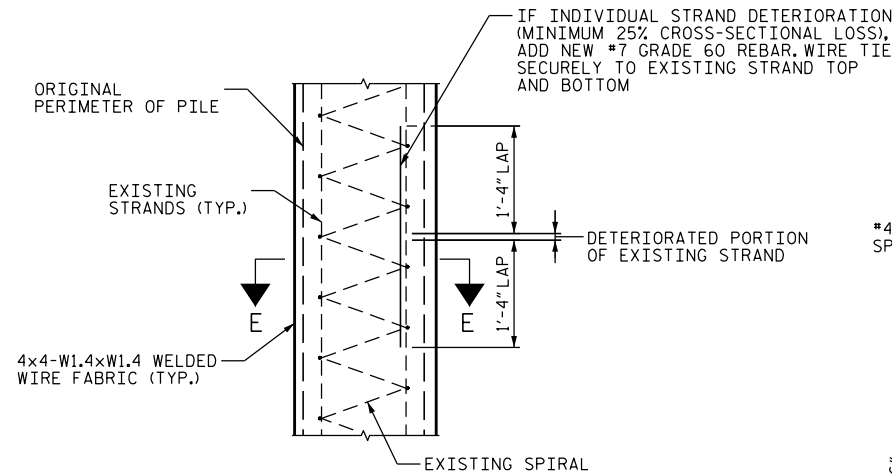
SECTION F-F

NOTE:
PROVIDE ELECTRICAL CONTINUITY BETWEEN THE NEW AND EXISTING STEEL AT THE CONNECTION JUNCTION BOX (SEE JUNCTION BOX DETAIL).



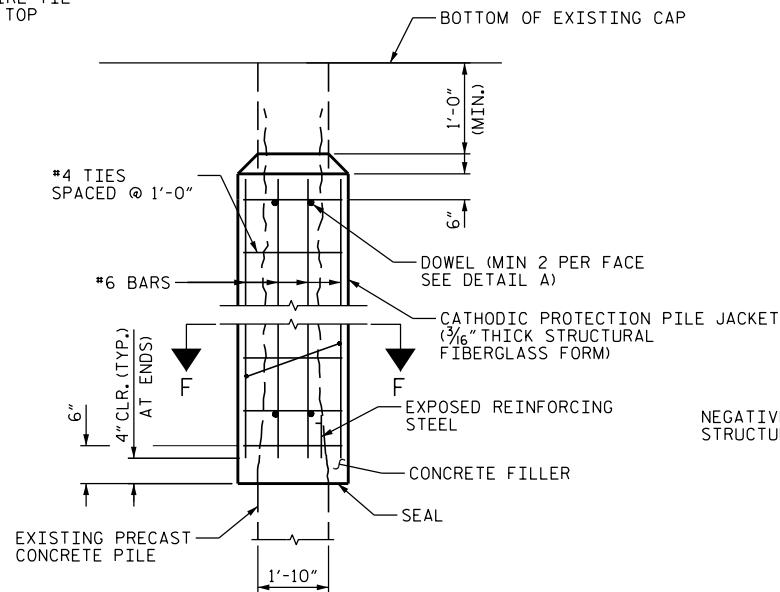
DETAIL A - DOWEL CONNECTION

1. EMBED DOWEL WITH EPOXY AT A POINT WHERE STRAND IS INTACT AND CONTINUOUS WITH THE PILE LENGTH EXTENDING FROM THAT PARTICULAR END OF THE JACKET. MAINTAIN ELECTRICAL ISOLATION BETWEEN DOWEL AND EXISTING PILE REINFORCEMENT.
2. RESISTANCE WELD DOWEL AT #7 BAR OR WELDED WIRE FABRIC TO ESTABLISH CONDUCTIVE CONNECTION. FOR BELOW WATER JACKET USE MECHANICAL CONNECTION. CONTRACTOR TO SUBMIT DETAIL TO ENGINEER FOR APPROVAL.
3. COAT ALL RESISTANCE WELD CONNECTIONS WITH TWO COATS OF 100% SOLIDS NON-CONDUCTIVE EPOXY.
4. WIRE TIE ALL INTERSECTIONS OF REINFORCING CAGE.
5. FILLER FOR JACKETS SHALL BE IN ACCORDANCE WITH CONTRACT DOCUMENTS. REINFORCING FOR JACKETS SHALL BE AS DETAILED ON THIS SHEET.

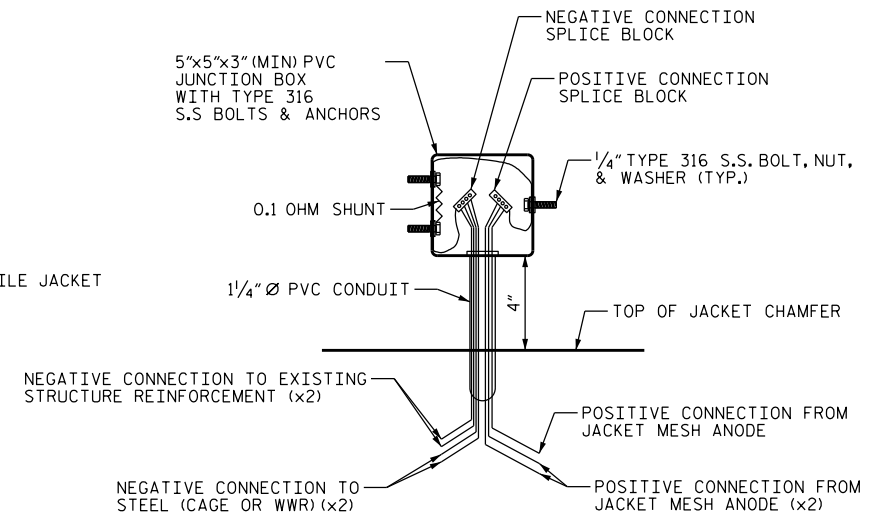


SCHEME 3
NON-STRUCTURAL CATHODIC PILE JACKET
(JACKET AND GROUT FILLER NOT SHOWN FOR CLARITY)

NOTE:
MINIMUM STEEL AREA REQUIREMENTS FOR NON-STRUCTURAL CASE 4x4-W1.4xW1.4 WELDED WIRE FABRIC OR GREATER.



SCHEME 4
STRUCTURAL CATHODIC PILE JACKET
(CATHODIC COMPONENTS NOT SHOWN FOR CLARITY)



JUNCTION BOX DETAIL

PROJECT NO. B-5937
CURRITUCK/DARE COUNTY
STATION: BRIDGE NO. 16

DocuSigned by:
Samuel Cullum
19C97095C75A467...
NORTH CAROLINA PROFESSIONAL ENGINEER
SEAL 043571
SAMUEL L. CULLUM
12/13/2016

STATE OF NORTH CAROLINA DEPARTMENT OF TRANSPORTATION RALEIGH					
PILE JACKET DETAILS (3 OF 3)					
REVISIONS					
NO.	BY:	DATE:	NO.	BY:	DATE:
1			3		
2			4		
					SHEET NO. S-271 TOTAL SHEETS

DRAWN BY : J. B. HANNA DATE : 07-16
CHECKED BY : S. L. CULLUM DATE : 07-16
DESIGN ENGINEER OF RECORD: S. L. CULLUM DATE : 07-16

DOCUMENT NOT CONSIDERED
FINAL UNLESS ALL
SIGNATURES COMPLETED

*****SYSTEM*****
*****SDGN*****
*****USERNAME*****