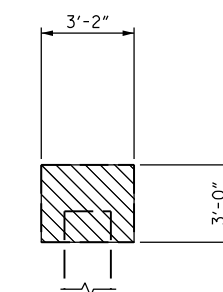
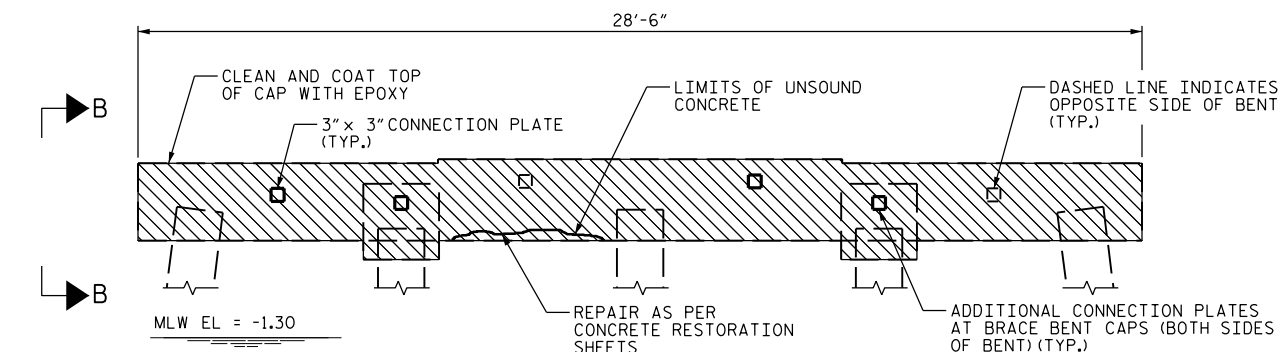


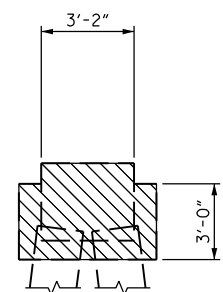
ELEVATION
(TYPE A BENT SHOWN - OTHERS SIMILAR)



VIEW A-A



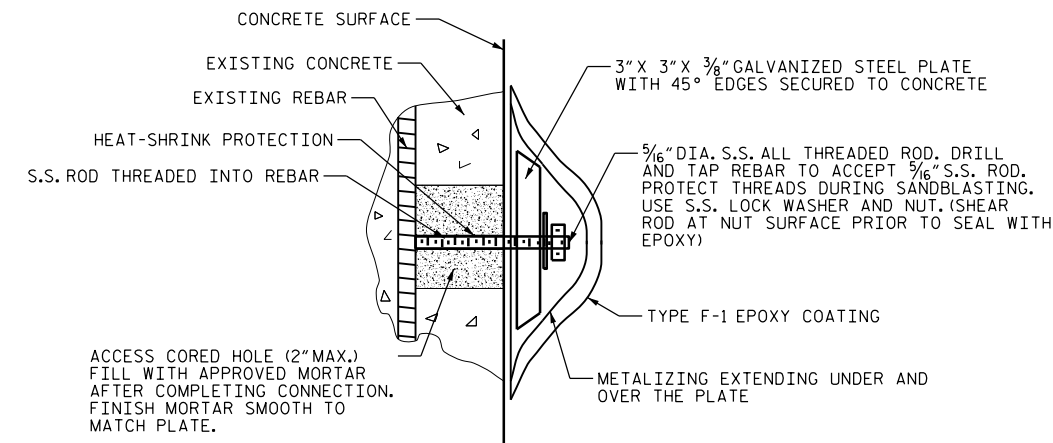
ELEVATION



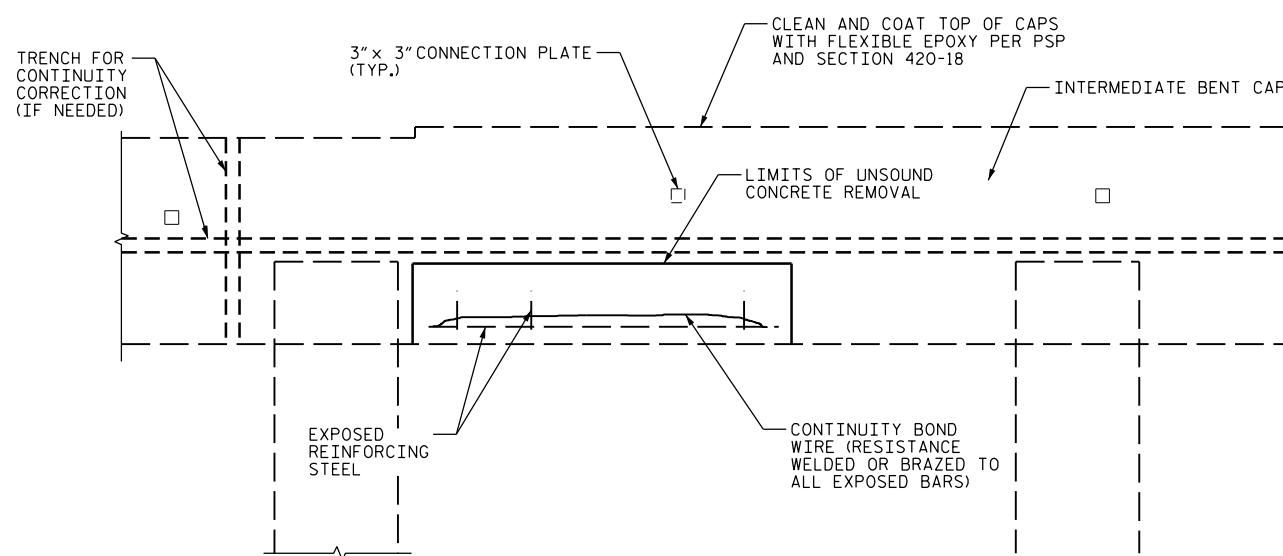
VIEW B-B

CONSTRUCTION NOTES:

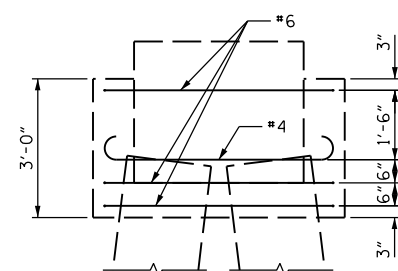
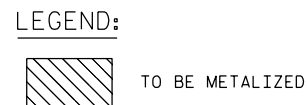
1. REMOVE ALL UNSOUND CONCRETE FROM THE INTERMEDIATE BENT CAPS IN ACCORDANCE WITH CONCRETE REPAIR SHEET AND PROJECT SPECIAL PROVISIONS FOR CONCRETE REPAIR.
2. THE CONTRACTOR SHALL SUBMIT A PLAN FOR CONTROL AND DISPOSAL OF DEBRIS TO THE ENGINEER FOR APPROVAL.
3. FOR SPALLS OR DELAMINATIONS ON THE CAPS GREATER THAN 2'-0" WIDE OR LONG AND GREATER THAN 1" DEEP, RESTORE CONCRETE TO ORIGINAL PROFILE IN ACCORDANCE WITH CONCRETE REPAIR SHEET AND PROJECT SPECIAL PROVISIONS FOR CONCRETE REPAIR. FOR ANY CONCRETE AREAS THAT WOULD BE ISOLATED FROM PROPOSED CONTINUITY BY EXISTING SUPERFICIAL CRACKING, FILL CRACKS WITH EPOXY PRIOR TO METALIZING PER PROJECT SPECIAL PROVISIONS FOR EPOXY INJECTION OF CRACKS.
4. ALL VERTICAL FACES AND THE UNDERSIDE OF THE CAP SHALL BE METALIZED. CONNECTION BETWEEN PLATE AND REINFORCING STEEL SHALL BE PROVIDED VIA A 5/16" DIAMETER STAINLESS STEEL ALL THREADED ROD AS DESCRIBED IN THE CONNECTION PLATE DETAIL. THE CONNECTION PLATES SHALL BE LOCATED IN AREAS OF SOUND CONCRETE AS DETAILED IN THE PROJECT SPECIAL PROVISIONS FOR CATHODIC PROTECTION AND SHALL BE INSTALLED ON DIFFERENT BARS.
5. CHECK INTERBAR CONTINUITY. REINFORCING BARS REQUIRING CONTINUITY CORRECTION SHALL BE MADE CONTINUOUS USING STEEL WIRE RESISTANCE WELDED OR BRAZED TO EVERY REBAR. ALL EXPOSED BARS SHALL BE MADE CONTINUOUS. COAT ALL CONTINUITY CORRECTION WELDS WITH NON-CONDUCTIVE EPOXY.
6. CHECK ELECTRICAL CONTINUITY BETWEEN ALL PLATES IN ACCORDANCE WITH THE PROJECT SPECIAL PROVISIONS FOR CATHODIC PROTECTION.
7. METALIZE AND PLACE CONNECTION PLATES IN ACCORDANCE WITH PROJECT SPECIAL PROVISIONS FOR CATHODIC PROTECTION.
8. APPLY A ZINC SILICATE OVERCOAT TO THE METALIZED AREAS AS DESCRIBED IN THE PROJECT SPECIAL PROVISIONS FOR CATHODIC PROTECTION-INTERMEDIATE BENT METALIZING. THE ENGINEER MUST APPROVE THE METALIZING PRIOR TO THE OVERCOAT APPLICATION.
9. SEE PROJECT SPECIAL PROVISIONS FOR ADDITIONAL METALIZING REQUIREMENTS AND ACCEPTANCE CRITERIA. (PSP; CATHODIC PROTECTION-INTERMEDIATE BENT METALIZING)
10. COAT TOP OF CAPS PER SECTION 420-18, NCDOT STANDARD SPECIFICATIONS FOR ROADS AND STRUCTURES. CLEAN TOPS OF CAPS PRIOR TO EPOXY APPLICATION PER PSP FOR EPOXY PROTECTIVE COATINGS MANUFACTURER RECOMMENDATIONS.
11. SEQUENCE CLEANING AND COATING IN ORDER TO AVOID DELETERIOUS SUBSTANCES INHIBITING PROPOSED COATINGS.
12. THE VERTICAL FACE STEP BEHIND THE AASHTO GIRDERS AT BENTS 153 AND 154 ARE NOT TO BE METALIZED. CLEAN AND COAT WITH EPOXY PROTECTIVE COATING PER PSP AND SECTION 420-18.



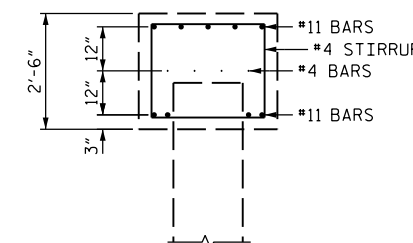
CONNECTION PLATE DETAIL FOR REBARS



CONTINUITY DETAIL



BASIC BENT CAP REINFORCING DETAIL
(FROM EXISTING PLANS - SEE FOR MORE DETAIL)
(ADDITIONAL BARS AT PILES)



BASIC BENT CAP REINFORCING DETAIL
(FROM EXISTING PLANS - SEE FOR MORE DETAIL)
(ADDITIONAL BARS AT PILES)

METALIZING NOTES:

1. NO METALIZING SHALL BE PERFORMED UNTIL THE CONCRETE RESTORATION HAS BEEN APPROVED BY THE ENGINEER. METALIZE AT NO LESS THAN 10 (TEN) DAYS AFTER PLACING CONCRETE, BUT NO MORE THAN 90 (NINETY) DAYS. CONNECT METALIZING CONNECTION PLATE IMMEDIATELY AFTER COMPLETING METALIZING.
2. APPLY A ZINC SILICATE OVERCOAT AT NO MORE THAN 72 HOURS AFTER METALIZING.
3. COAT CONNECTION PLATE WITH EPOXY AT NO MORE THAN 96 HOURS AFTER APPLICATION OF ZINC SILICATE OVERCOAT.

DocuSigned by:
Samuel Cullum
19C97095C75A467...



PROJECT NO. B-5937
CURRITUCK/DARE COUNTY
STATION: BRIDGE NO. 16

STATE OF NORTH CAROLINA
DEPARTMENT OF TRANSPORTATION
RALEIGH
**INTERMEDIATE BENT
CAP METALIZING**

DRAWN BY: J. B. HANNA DATE: 07-16
CHECKED BY: S. L. CULLUM DATE: 07-16
DESIGN ENGINEER OF RECORD: S. L. CULLUM DATE: 07-16

DOCUMENT NOT CONSIDERED
FINAL UNLESS ALL
SIGNATURES COMPLETED

REVISIONS						SHEET NO.
NO.	BY:	DATE:	NO.	BY:	DATE:	TOTAL SHEETS
1			3			S-268
2			4			

*****SYSTEM*****
*****SDGN*****
*****USERNAME*****