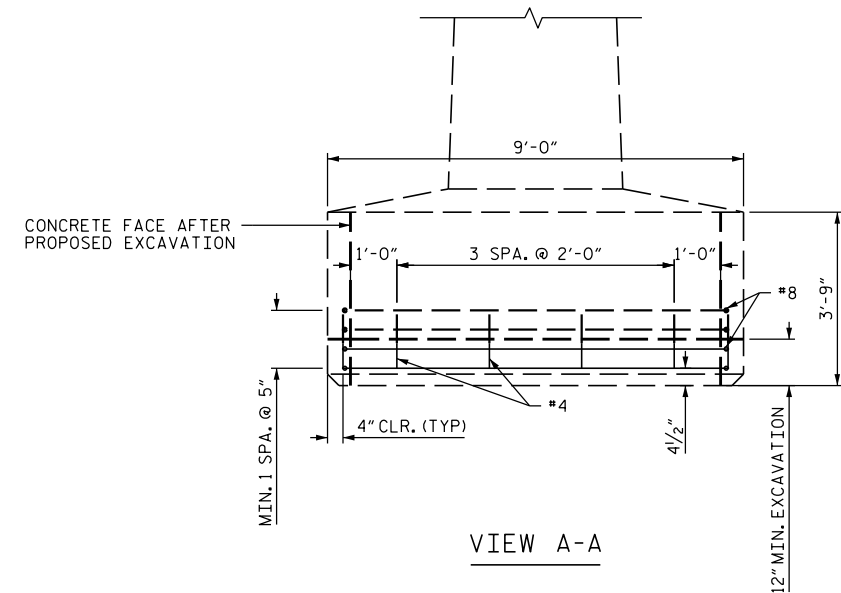


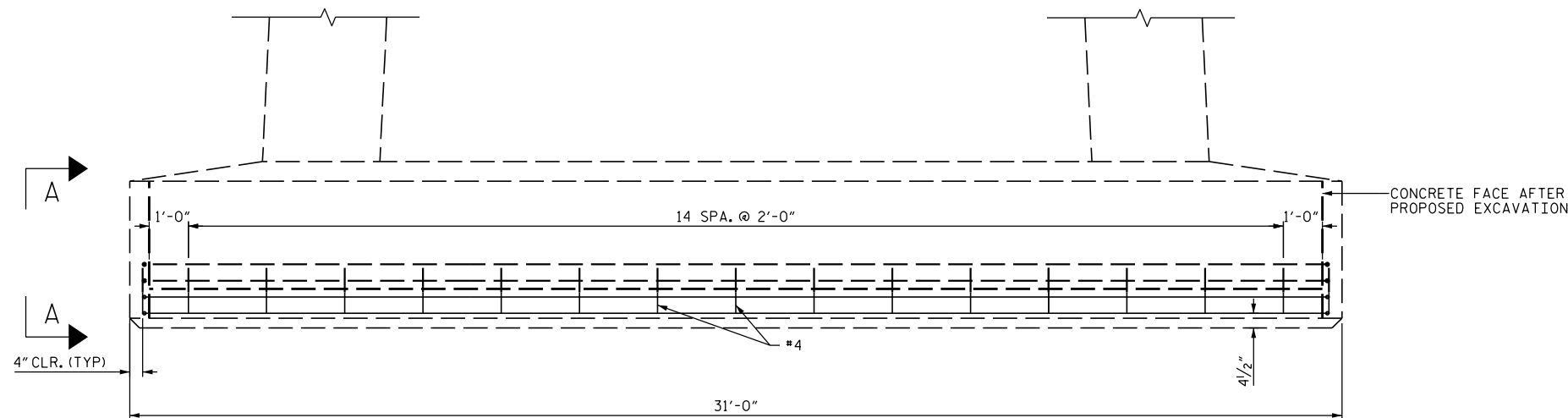
TYPICAL FOOTING SHOWN - PLAN
BENTS 172-176, 181-185



TYPICAL #8 HOOKED BAR

NOTES:

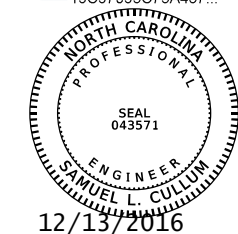
1. WORK THIS SHEET WITH SUBSTRUCTURE CONCRETE REPAIR SHEETS FOR BENTS 172-185.
2. REMOVE UNSOUND CONCRETE FOR A MINIMUM HEIGHT OF 12" (FROM THE BOTTOM OF FOOTING) AND MINIMUM DEPTH OF 6" ON ALL SIDES OF THE FOOTING AS SHOWN ON THE PLANS. EXTEND REPAIR AREA VERTICALLY BASED ON SOUNDING IN THE PRESENCE OF THE ENGINEER AND IN ACCORDANCE WITH PSP FOR CONCRETE RESTORATION.
3. CONCRETE REPAIR MATERIAL MAY BE APPROVED BAG MIX OR AA CONCRETE PER THE STANDARD SPECIFICATIONS WITH THE ADDITION OF STANDARD CORROSION REDUCING ADMIXTURES PER THE SPECIFICATIONS.
4. SEQUENCE REPAIRS SUCH THAT THEY DO NOT TAKE PLACE AT THE SAME TIME AS PROPOSED PILE STRENGTHENING AT EACH PIER.
5. BENTS 177-180 WILL HAVE SIMILAR REPAIRS PERFORMED BUT THE DIMENSIONS ARE 32'-0" X 10'-0"



TYPICAL FOOTING SHOWN - ELEVATION
BENTS 172-176, 181-185

PROJECT NO. B-5937
CURRITUCK/DARE COUNTY
STATION: BRIDGE NO. 16

DocuSigned by:
Samuel Cullum
19C97095C75A467...



STATE OF NORTH CAROLINA
DEPARTMENT OF TRANSPORTATION
RALEIGH

CHANNEL BENT FOOTING RESTORATION

DRAWN BY : J. B. HANNA DATE : 10-16
CHECKED BY : S. L. CULLUM DATE : 10-16
DESIGN ENGINEER OF RECORD: S. L. CULLUM DATE : 10-16

DOCUMENT NOT CONSIDERED
FINAL UNLESS ALL
SIGNATURES COMPLETED

REVISIONS						SHEET NO.
NO.	BY:	DATE:	NO.	BY:	DATE:	TOTAL SHEETS
1			3			S-267
2			4			