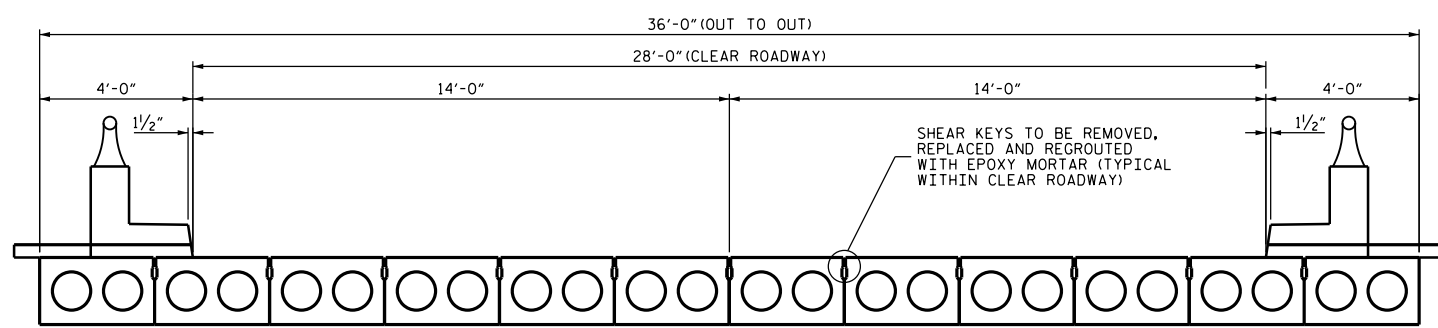
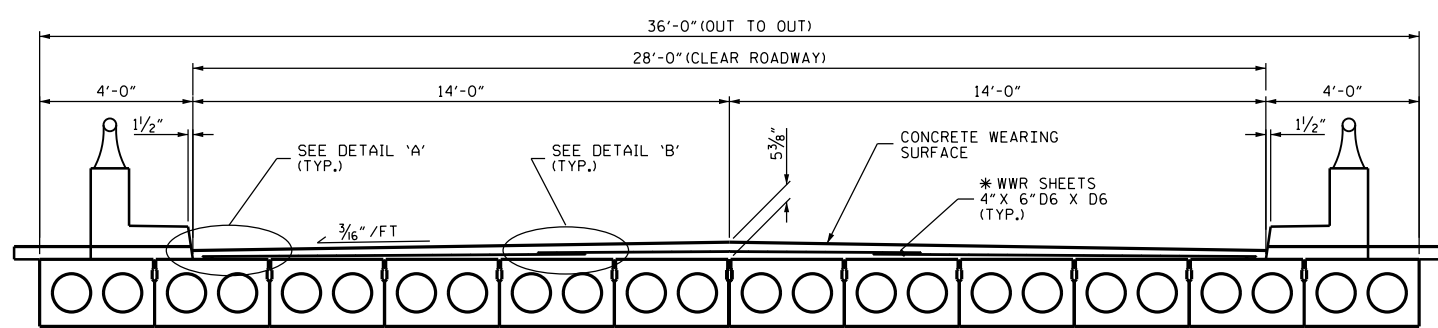


TYPICAL SECTION  
(EXISTING SPAN 154)



TYPICAL SECTION  
(AFTER REMOVAL OF LMC OVERLAY)

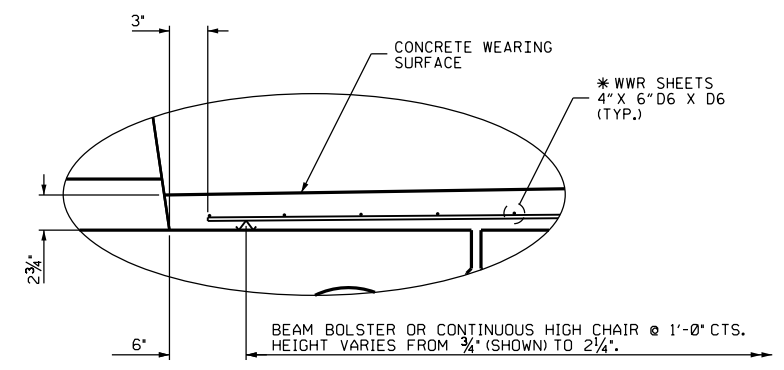


TYPICAL SECTION  
(PROPOSED SPAN 154)

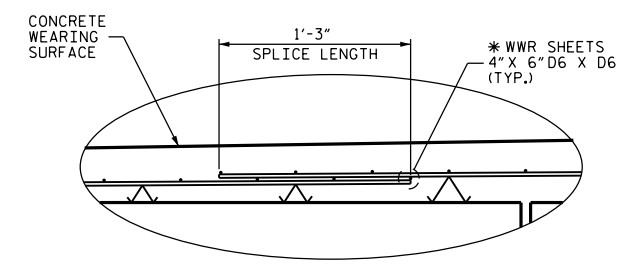
BILL OF MATERIAL FOR CONCRETE WEARING SURFACE					
BAR	NO.	SIZE	TYPE	LENGTH	WEIGHT
WWR	12	6 X 4 D6/D6	STR	12'-4" X 10'-0"	1572
GALVANIZED WWR				LBS.	1572
CONCRETE WEARING SURFACE				SQ.FT.	1260

NOTES

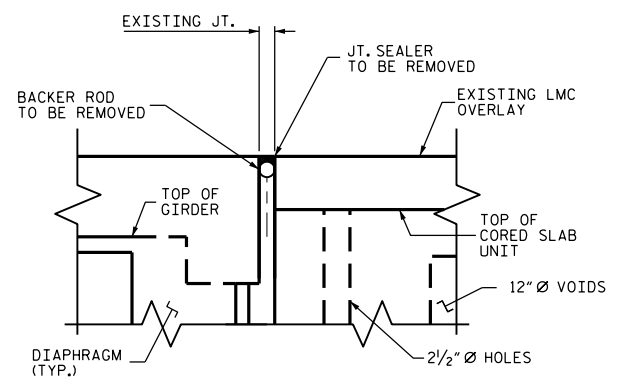
THE COST OF THE 4" X 6" D6 X D6 WWR SHEETS CAST WITH THE CONCRETE WEARING SURFACE SHALL BE INCLUDED IN THE UNIT PRICE BID FOR CONCRETE WEARING SURFACE.  
 \*WWR SHEETS SHALL BE GALVANIZED.  
 FOR CONCRETE WEARING SURFACE, SEE SPECIAL PROVISIONS.  
 FOR SILICONE JOINT SEALANT, SEE SPECIAL PROVISIONS.



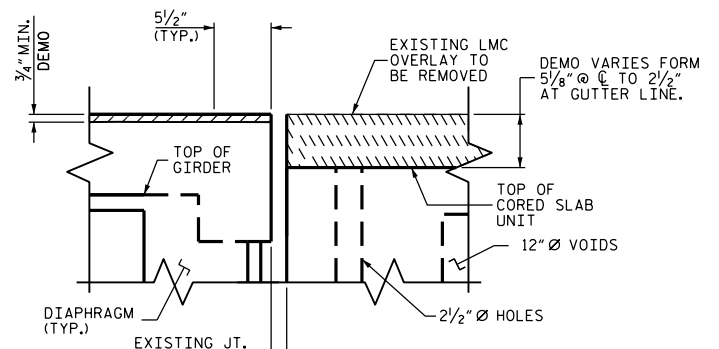
DETAIL 'A'



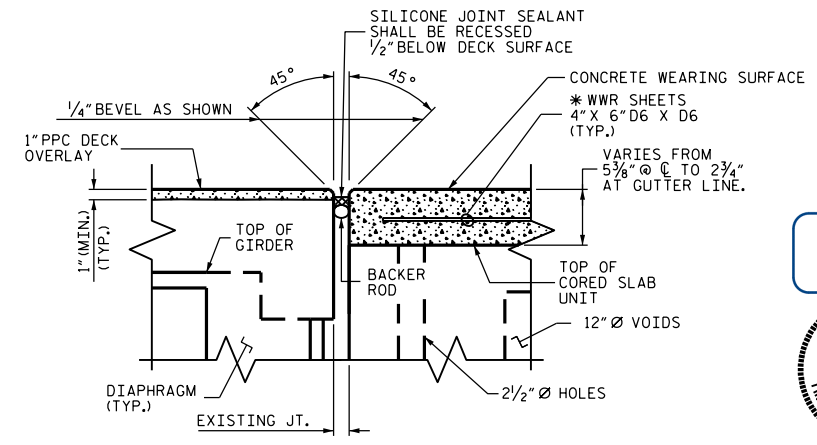
DETAIL 'B'  
(TRAVERSE SPLICE)



SECTION E-E  
(EXISTING)



SECTION E-E  
(MINIMUM DEMOLITION)



SECTION E-E  
(PROPOSED)

SILICONE JOINT SEALANT AND BACKER ROD SHALL BE INSTALLED AS PER MANUFACTURER'S RECOMMENDATIONS.

PROJECT NO. B-5937  
 CURRITUCK COUNTY  
 BRIDGE NO. 16

DocuSigned by:

*Timothy M. Sherrill*



STATE OF NORTH CAROLINA  
 DEPARTMENT OF TRANSPORTATION  
 RALEIGH

TYPICAL SECTION & JOINT DETAILS  
 SPAN 154

12/8/2016

DRAWN BY: CL BRIGHT DATE: 09/16  
 CHECKED BY: TIM SHERRILL DATE: 10/16

REVISIONS						SHEET NO.
NO.	BY:	DATE:	NO.	BY:	DATE:	TOTAL SHEETS
1			3			16
2			4			287