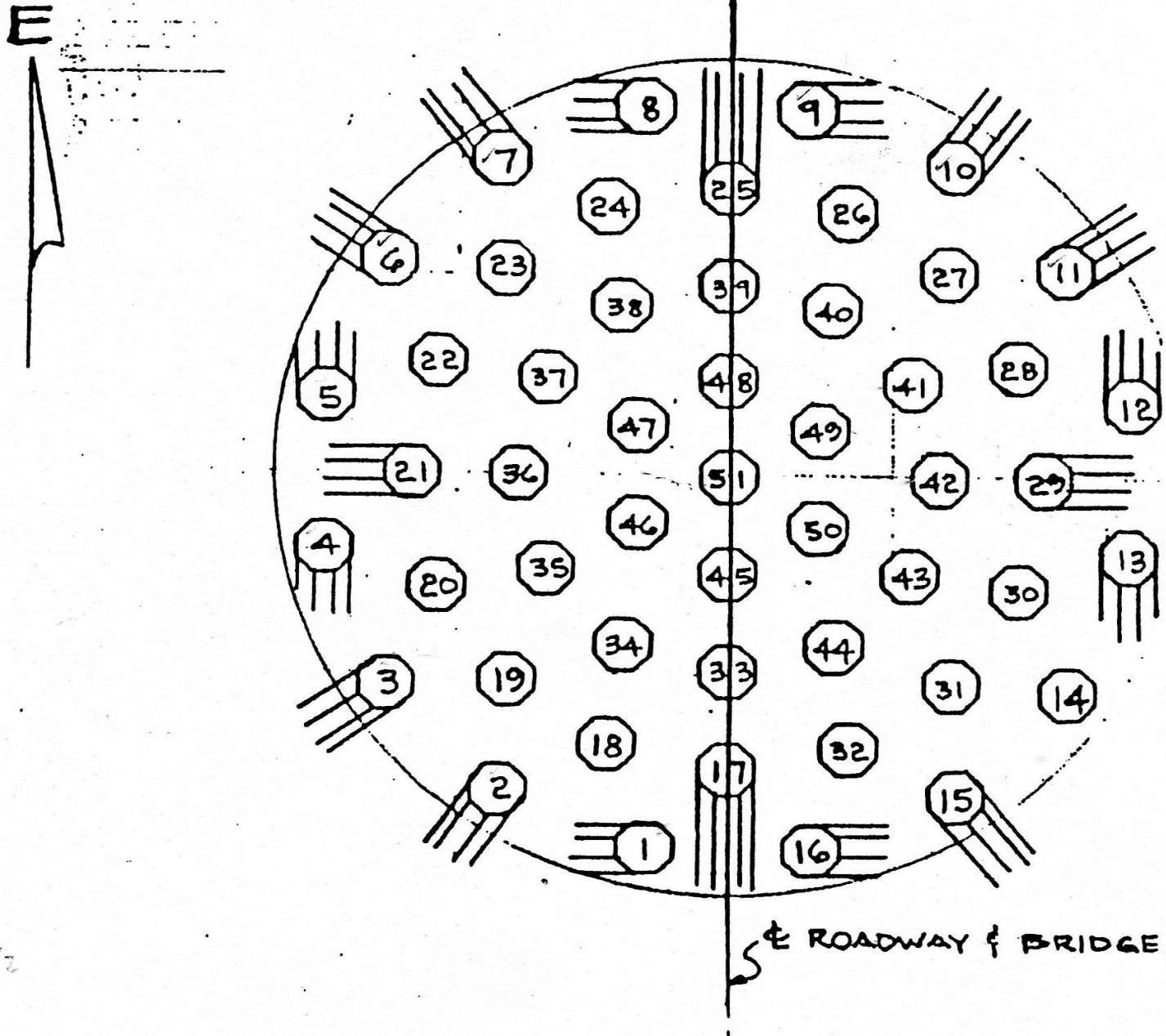


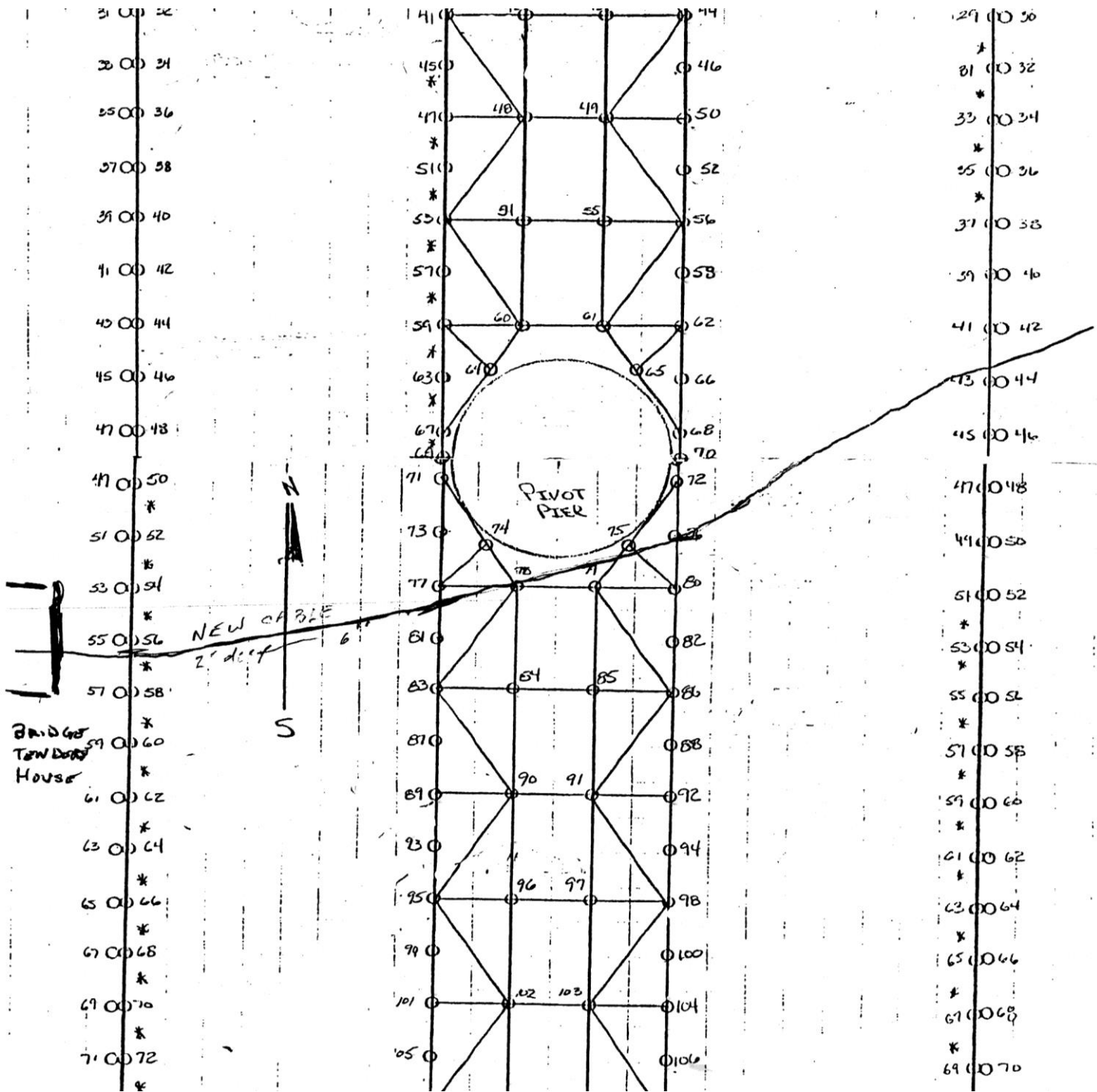


Bridge tenders house, pivot span, and fender system

PLAN VIEW



Pivot bent pile diagram



FIELD SKETCH OF CABLE CROSSING NAVIGATION CHANNEL
 STATION MARKS CORRESPOND WITH PAINT MARKS ON FENDER SYSTEM



PIVOT BENT

P-4, F-7,6,5, DELAMINATED 3" DEEP





P-5, F-5,6,7, DELAMINATED 2" - 3" DEEP

P-9, F-1,2,3, DELAM. 3" DEEP





P-12, F-5,6,7, DELAM. 3" DEEP, FAILED REPAIR

P-13, F-6,7, DELAM. 2"-3" DEEP MULTIPLE 1/16"-1/8" CRACKS





P-14, F-3,4,5, DELAM. 3" DEEP

P-15, F-3,4,5,6, MULTIPLE 1/16"-1/8" CRACKS





P-17, F-6,7,8, DELAM. 1" TO 2" DEEP

P-18, F-3,4,5,6, DELAM. 2" DEEP





P-19, F-2,3, DELAM. 2" DEEP

P-20, F-2,3,5,6, DELAM. 2" DEEP





P-21, F-3,4,5, DELAM. 2" DEEP

P-22, F-4,5,6,7, DELAM. 3" DEEP FAILED REPAIR





P-25, F-4,5, DELAM. 2" DEEP

P-26, F-4,5,6,7, DELAM. 2" DEEP





P-27, F-3,4, DELAM. 1" DEEP

P-28, F-3,4,5,6,7, DELAM. 2"-3" DEEP, FAILED REPAIR





P-29, F-3,4,5,6,7, DELAM. 2"-3" DEEP, FAILED REPAIR

P-30, F-3,4,5,6,7,8, DELAM. 2"-3" DEEP, FAILED REPAIR





P-32, F-3,4,5,6,7,8, DELAM. 2"-3" DEEP, FAILED REPAIR

P-33, F-2,3,4, DELAM. 2"-3" DEEP





P-34, F-4,5,6,7, DELAM. 2"-3" DEEP

P-35, F-3,4,5,6,7,8, DELAM. 2"-3" DEEP





P-37, F-3,4,5,6,7,8, DELAM. 2"-3" DEEP

P-38, F-3,4,5,6,7,8, DELAM. 2"-3" DEEP, FAILED REPAIR





P-39, F-2,3,4,5,6,7, DELAM. 2"-3" DEEP, FAILED REPAIR

P-41, F-4,5,6,7, DELAM. 2"-3" DEEP, EXPOSED CABLES





P-42, F-2,3,4,5,6, DELAM. 2"-3" DEEP

P-43, F-3,4,5,6,7, DELAM. 2"-3" DEEP, FAILED REPAIR





P-45, F-2,3,4,5,6,7, DELAM. 2"-3" DEEP

P-46, F-1,2,3, DELAM. 2" DEEP





P-47, F-2,3,4, DELAM. 2" DEEP

P-48, F-2,3,4,5,6,7,8, 2"-3" DEEP, FAILED REPAIR





P-49, F-3,4,5,6,7, DELAM. 3" DEEP, FAILED REPAIR

P-50, F-4,5, DELAM. 1" DEEP



COUNTY Tyrrell

BR. NO. 880007

DATE 11/5/15



P-51, F-6,7, DELAM. 1"- 2" DEEP



CABLE CROSSING AT EAST FENDER STATION 43, MARKED WITH FLAGGING TAPE

CABLE CROSSING WEST SIDE OF EAST CHANNEL STATION 76, MARKED WITH FLAGGING TAPE





CABLE CROSSING WEST CHANNEL EAST SIDE STATION 79, MARKED WITH FLAGGING TAPE

CABLE CROSSING WEST CHANNEL WEST SIDE STATION 56, MARKED WITH FLAGGING TAPE

