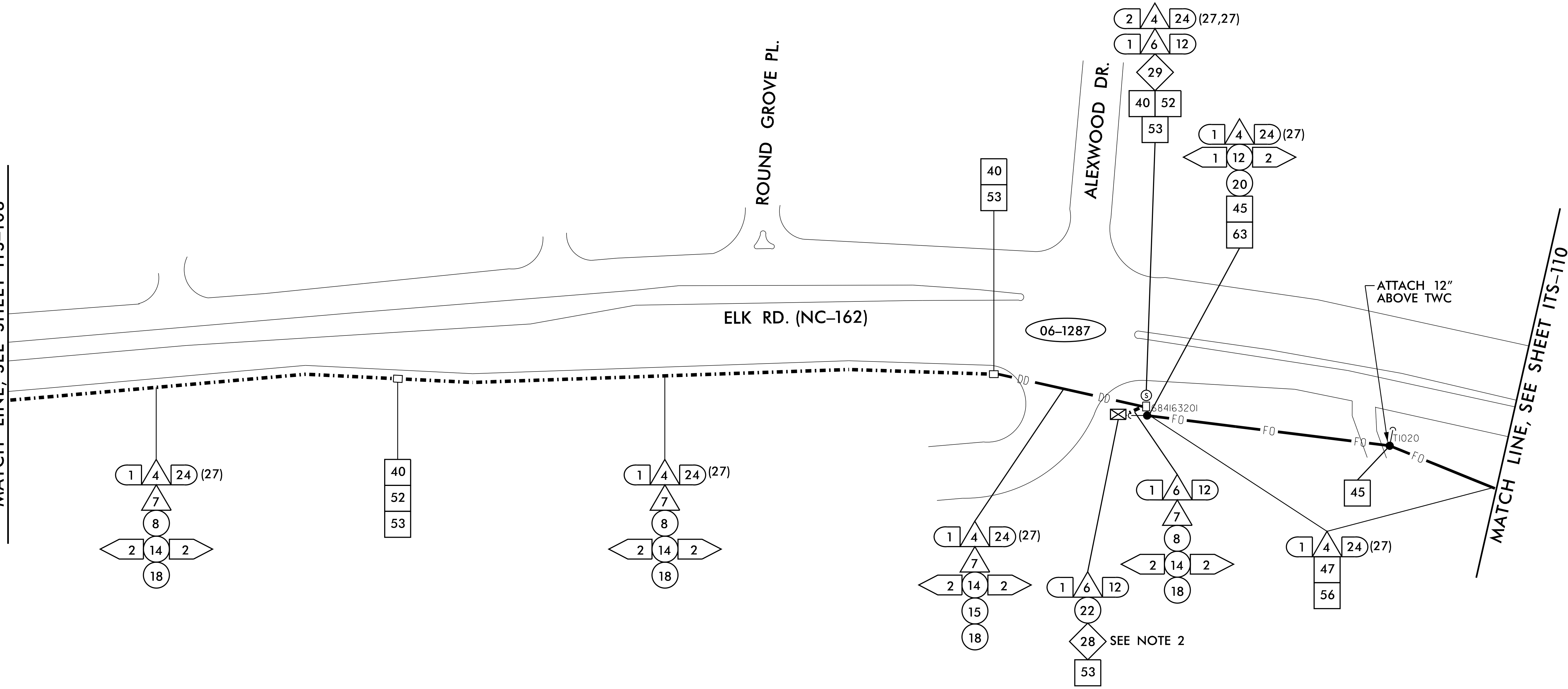


MATCH LINE, SEE SHEET ITS-108



- NOTES:
1. NCDOT CONTRACTOR ATTACH TO FRONT SIDE OF POLE AT 40" BELOW POWER PRESENCE UNLESS OTHERWISE NOTED.
  2. SEE SUMMARY OF WORK TABLES FOR ADDITIONAL CABINET AND COMMUNICATIONS WORK TO BE PERFORMED.
  3. MAINTAIN A MINIMUM OF SIX (6) FEET FROM EDGE OF PAVEMENT WHEN TRENCHING PARALLEL TO THE ROADWAY UNLESS OTHERWISE NOTED.

11/15/2016 K:\ARL\TPOD\_ITS\01036305 - Fayetteville Sig Sys\Plans\01036305\_ITS\_psh\_09.dgn

**Kimley»Horn**  
 NC License #F-0102  
 421 Fayetteville St., Suite 600  
 Raleigh, NC 27636  
 Tel: (919) 677-2000  
 Fax: (919) 677-2050

	<b>FAYETTEVILLE COMPUTERIZED SIGNAL SYSTEM</b> COMMUNICATIONS CABLE AND CONDUIT ROUTING PLAN		SEAL 
	DIVISION 06 PLAN DATE: NOVEMBER 2016 PREPARED BY: J. CROSS	CUMBERLAND COUNTY REVIEWED BY: K. NICHOLAS REVIEWED BY: K. SMITH	
SCALE: 0 = 50		REVISIONS:	INIT. DATE SIGNATURE DATE CADD Filename: