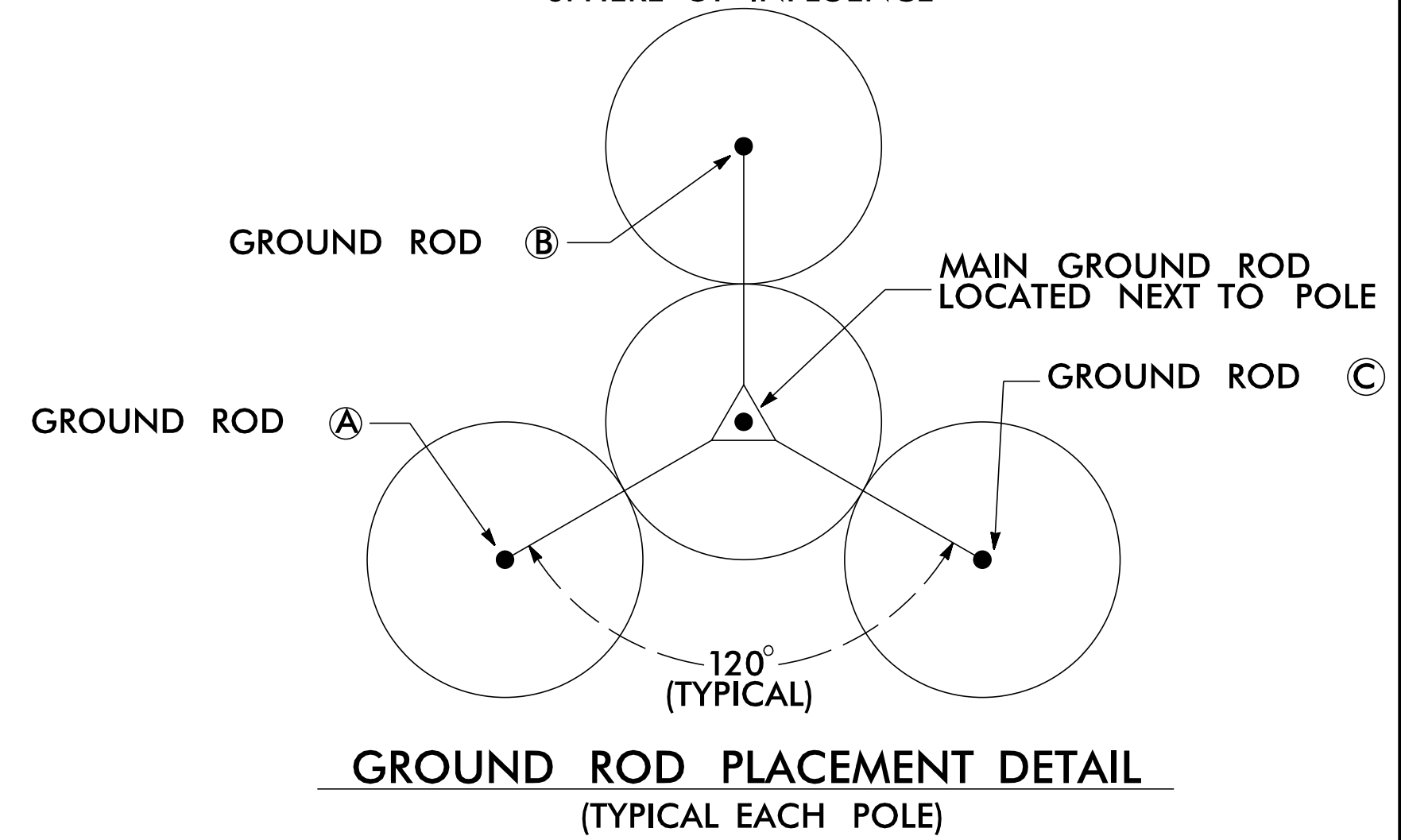
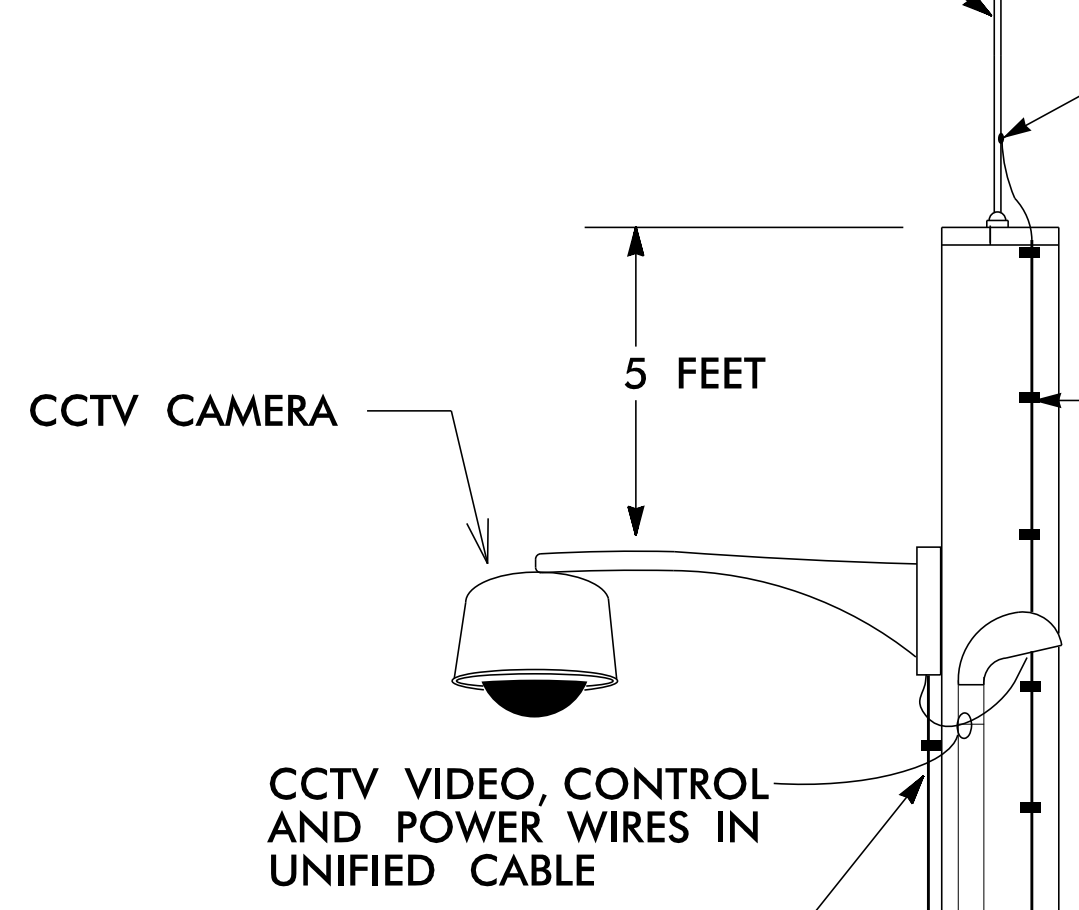


10 FOOT RADIUS EACH "SPHERE OF INFLUENCE"

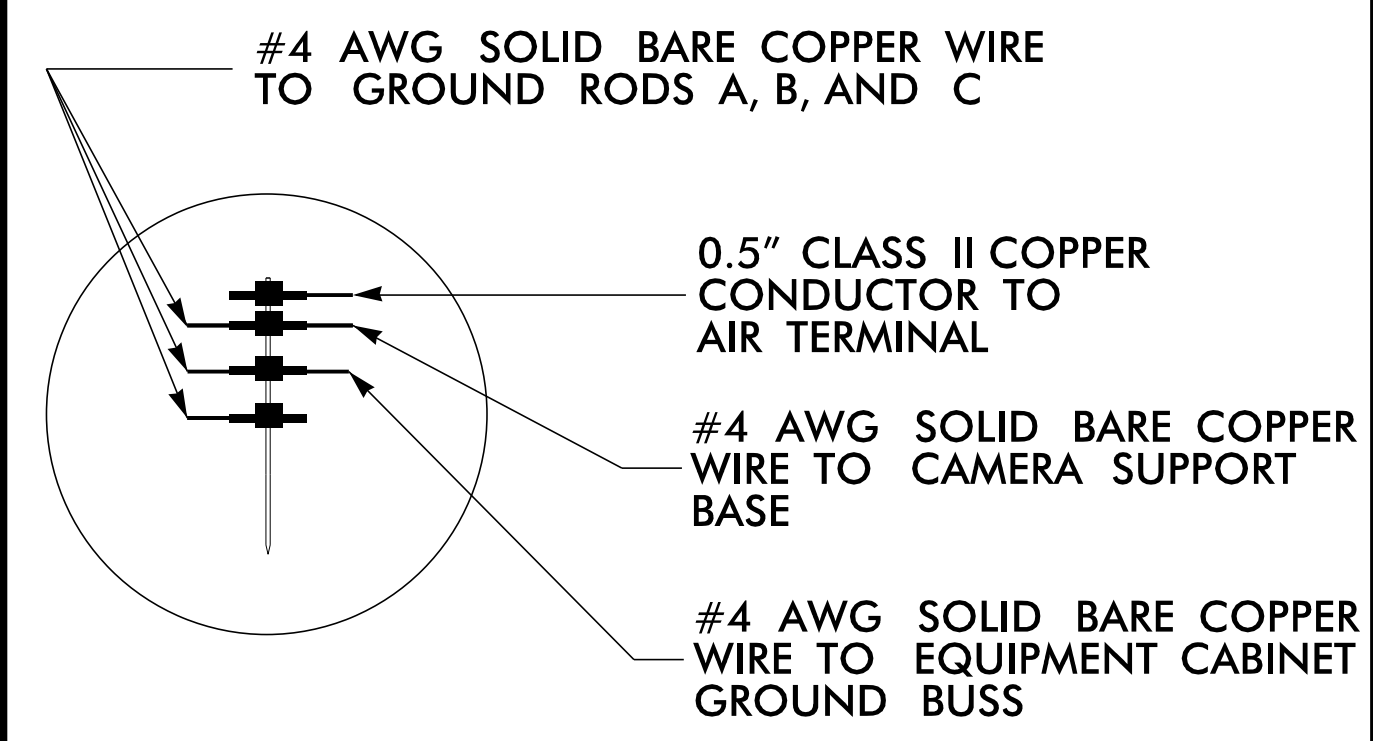


0.5 INCH X 36 INCH MINIMUM COPPER-CLAD AIR TERMINAL (CLASS II)



SECURE CLASS II, 28 STRAND (MINIMUM), 15 AWG (MINIMUM), ROPE-LAY BARE COPPER LIGHTNING CONDUCTOR TO THE POLE ON 24 INCH CENTERS. USE COPPER CABLE CLIPS DESIGNED FOR USE WITH THE CLASS II COPPER CONDUCTOR. SECURE EACH COPPER CABLE CLIP TO THE POLE USING A 0.25 INCH DIAMETER X 1.5 INCH LONG HEX HEAD, GALVANIZED SCREW.

INSET 'A'

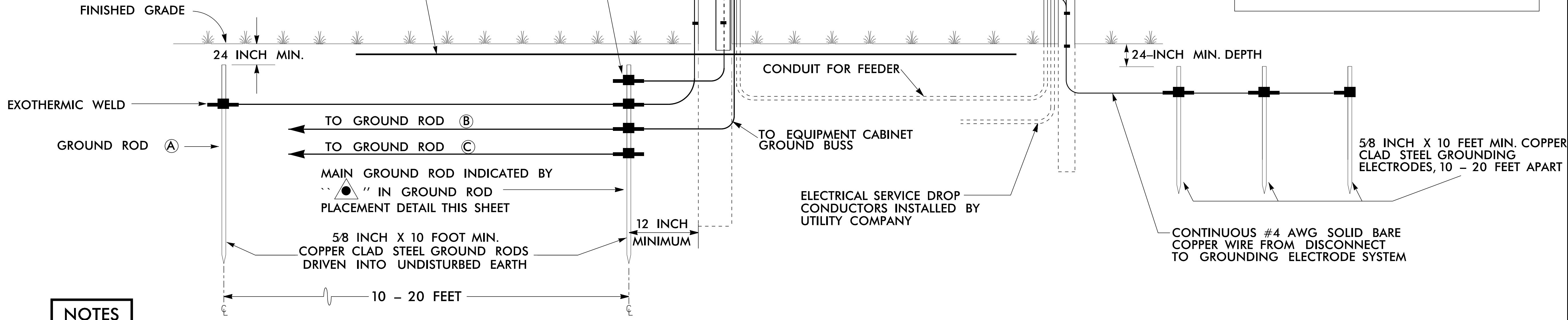


BOND #4 AWG SOLID BARE COPPER WIRE TO CAMERA SUPPORT BASE BY AN ALUMINUM TO COPPER #2 - #14 AWG LUG. ATTACH TO CAMERA BASE WITH A STAINLESS STEEL SELF TAPPING SCREW. REMOVE PAINT OR PROTECTIVE COATING WHERE ATTACHING LUG ONLY.

INSTALL 2-INCH PVC U-GUARD OVER COPPER CONDUCTOR FROM GROUND LEVEL TO 10 FEET (MINIMUM) ABOVE THE GROUND.

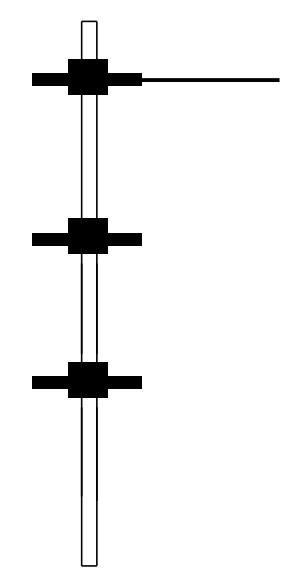
2-INCH RIGID GALVANIZED STEEL RISER FOR POWER AND CONTROL WIRES

INSTALL MARKER TAPE 12 INCHES BELOW GRADE AND ABOVE ALL GROUNDING CONDUCTORS.



ALTERNATE GROUNDING METHOD

IF SPACE IS NOT AVAILABLE TO DRIVE MULTIPLE RODS, DRIVE SECTIONAL GROUND RODS A MINIMUM OF 30 FEET.



JOIN SECTIONAL GROUND RODS BY EXOTHERMIC WELDING CONNECTION

NOTES

1. BOND CLASS II, 28 STRAND (MINIMUM), 15 AWG (MINIMUM) ROPE-LAY BARE COPPER CONDUCTOR TO THE MAIN GROUND ROD BY AN EXOTHERMIC WELD METHOD. MAINTAIN MAXIMUM HORIZONTAL SEPARATION BETWEEN COPPER CONDUCTOR AND RISER.
2. EXOTHERMICALLY WELD ALL CONNECTIONS TO GROUND RODS.
3. THE CONTRACTOR MAY, UPON APPROVAL OF THE ENGINEER, INSTALL A 30-FOOT SECTIONAL GROUND ROD FOR INSTANCES WHEN CONDITIONS WILL NOT ALLOW FOR THE INSTALLATION OF THE 3 - RADIAL GROUND RODS.
4. INSTALL MARKER TAPE DIRECTLY ABOVE ALL GROUNDING ELECTRODES AND CONDUCTORS AT A DEPTH OF 12 INCHES.
5. REMOVE BONDING JUMPER BETWEEN EQUIPMENT CABINET GROUND BUSS AND NEUTRAL BUSS.

<p>Kimley-Horn NC License #F-0102 421 Fayetteville St., Suite 600 Raleigh, NC 27636 Tel: (919) 677-2000 Fax: (919) 677-2050</p>	<p>Plans Prepared For:</p> <p>FAYETTEVILLE COMPUTERIZED SIGNAL SYSTEM</p>		<p>SEAL</p> <p>Kevin W. Smith 11/15/2016</p>							
	<p>CCTV CAMERA INSTALLATION FOR WOOD POLES UNDERGROUND ELECTRICAL SERVICE</p> <p>DIVISION 06 CUMBERLAND COUNTY</p> <p>PLAN DATE: NOVEMBER 2016 REVIEWED BY: K. NICHOLAS</p> <p>PREPARED BY: J. GROSS REVIEWED BY: K. SMITH</p>			<p>REVISIONS</p> <table border="1"> <tr> <th>NO.</th> <th>DESCRIPTION</th> <th>INIT.</th> <th>DATE</th> </tr> <tr> <td> </td> <td> </td> <td> </td> <td> </td> </tr> </table>	NO.	DESCRIPTION	INIT.	DATE		
NO.	DESCRIPTION	INIT.	DATE							

11/15/2016 KARALL.TPTD...ITS\01036305 - Fayetteville Sig Sys\Plans\01036305_ITS_psh_ll.dft.dgn