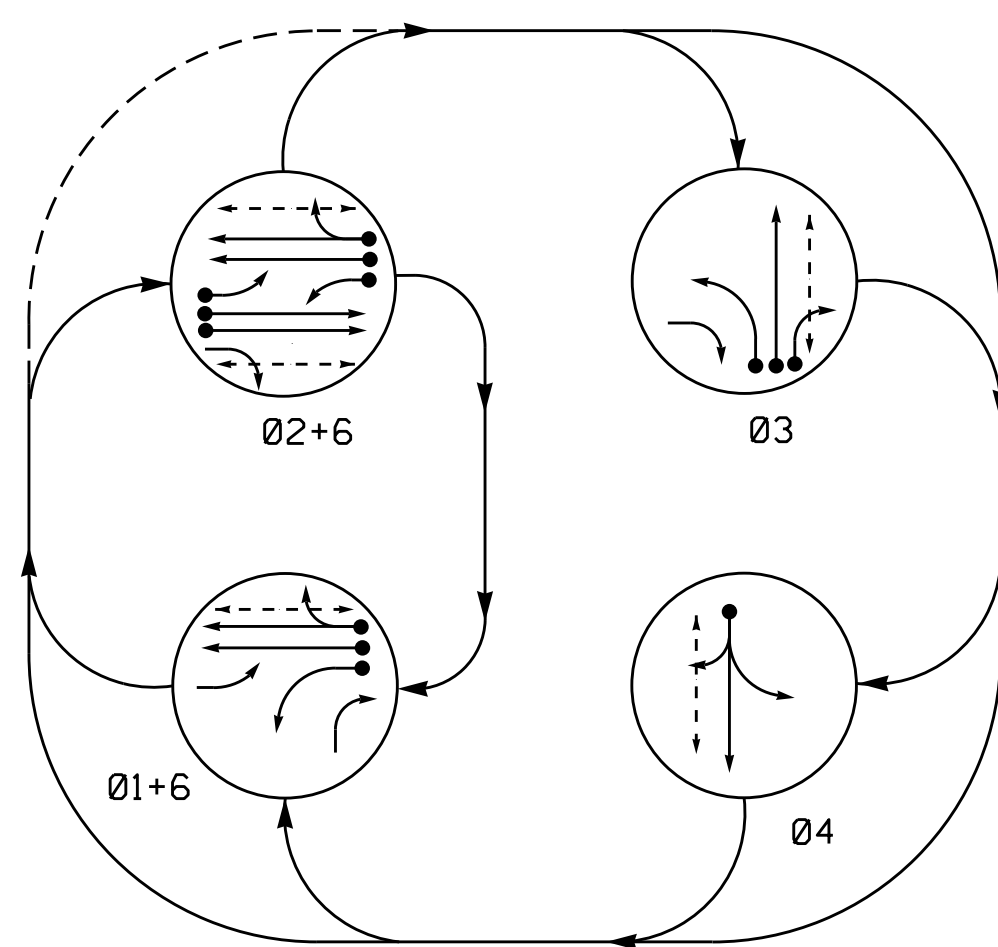


PHASING DIAGRAM

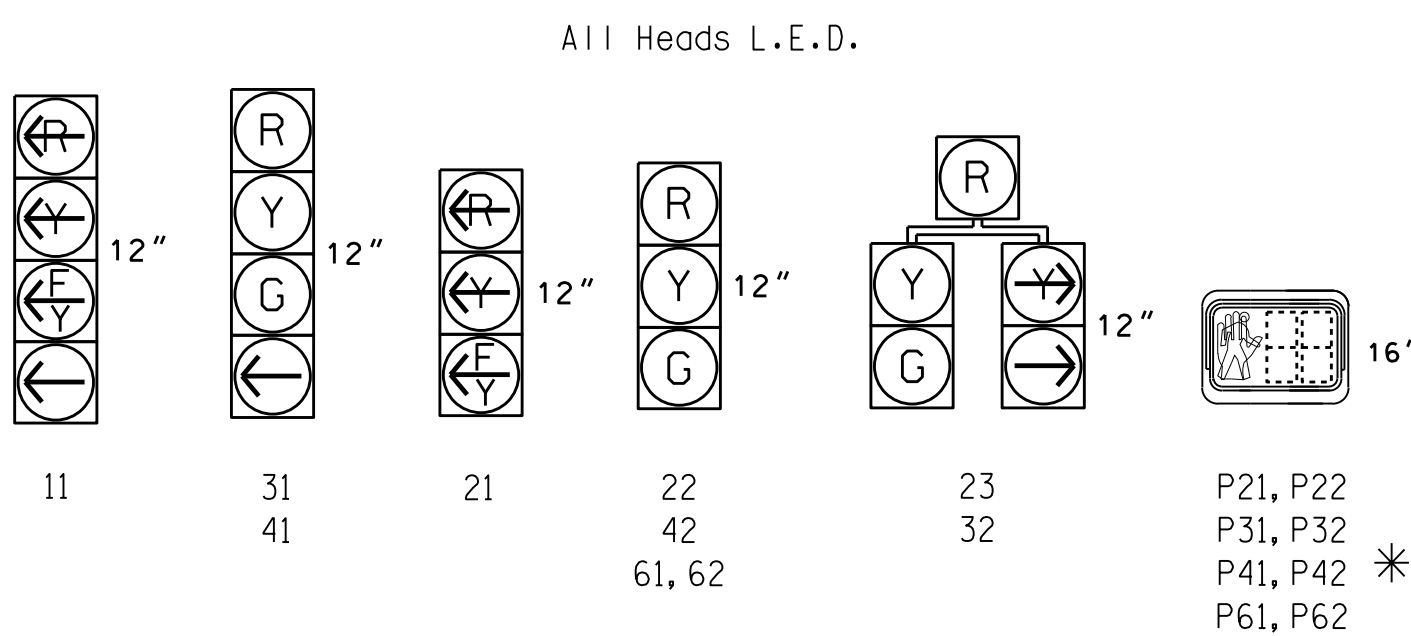


PHASING DIAGRAM DETECTION LEGEND

- DETECTED MOVEMENT
- UNDETECTED MOVEMENT (OVERLAP)
- UNSIGNALIZED MOVEMENT
- PEDESTRIAN MOVEMENT

SIGNAL FACE	PHASE					HOLD
	Ø 1 + 6	Ø 2 + 6	Ø 3	Ø 4	Ø 5	
11	—	—	—	—	—	—
21	—	—	—	—	—	—
22	R	G	R	R	Y	—
23	R	G	R	R	Y	—
31	R	R	G	R	R	—
32	R	R	G	R	R	—
41	R	R	R	G	R	—
42	R	R	R	G	R	—
61,62	G	G	R	R	Y	—
P21,P22	DW	W	DW	DW	DRK	—
P31,P32	DW	DW	W	DW	DRK	—
P41,P42	DW	DW	DW	W	DRK	—
P61,P62	W	W	DW	DW	DRK	—

SIGNAL FACE I.D.

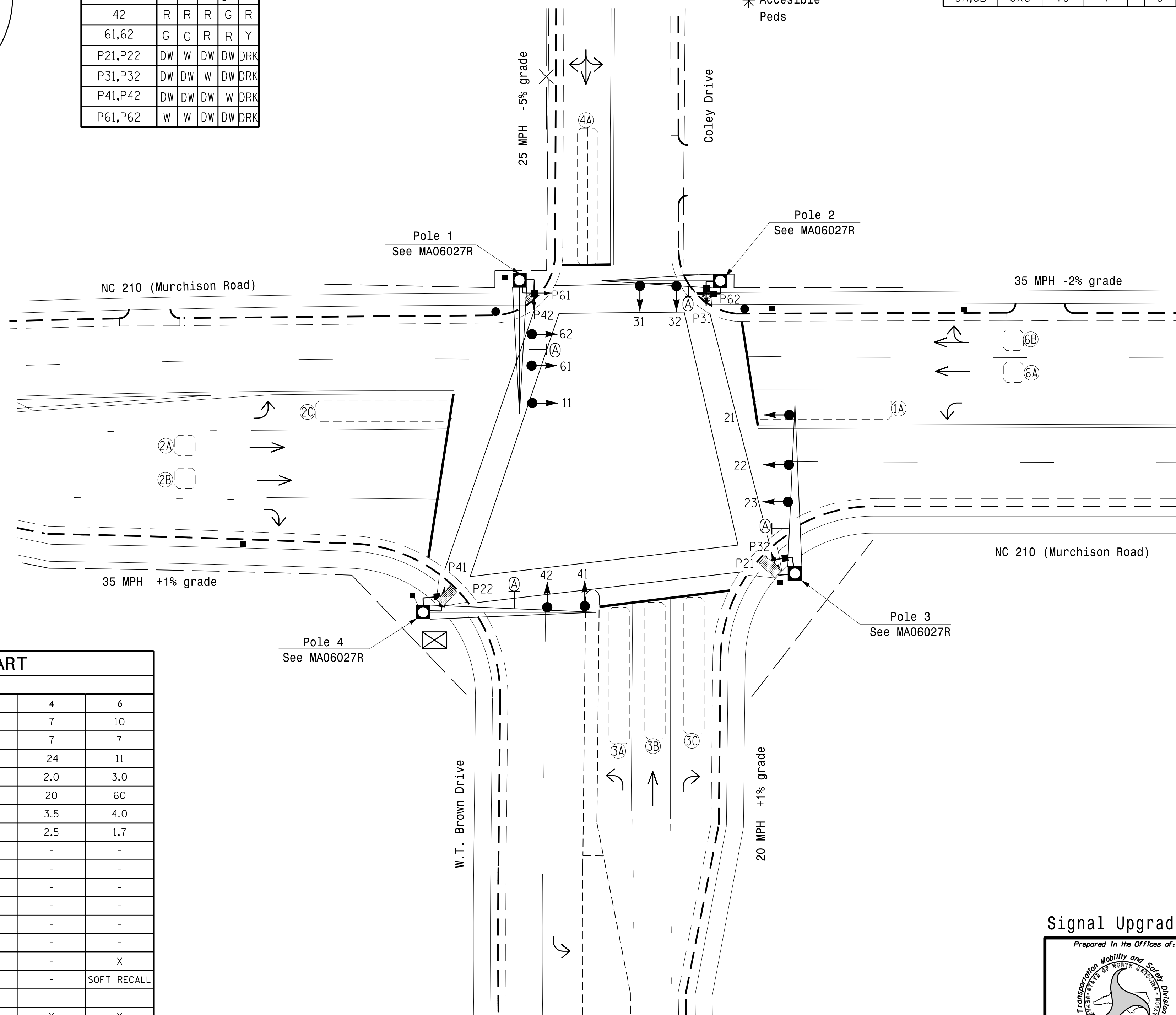


ASC/3 DETECTOR INSTALLATION CHART											
LOOP	SIZE (FT)	DISTANCE FROM STOPBAR (FT)	TURNS	NEW LOOP	PROGRAMMING						
					PHASE	CALLING	EXTEND TIME	DELAY TIME	TYPE	SYSTEM LOOP	NEW CARD
1A	6X40	0	2-4-2	-	1	Yes	-	15	S	-	X
2A,2B	6X6	70	4	-	2	Yes	-	-	S	-	X
2C	6X40	0	2-4-2	-	2	Yes	-	-	S	-	X
3A	6X40	0	2-4-2	-	3	Yes	-	-	S	-	X
3B	6X40	0	2-4-2	-	3	Yes	-	-	S	-	X
3C	6X40	0	2-4-2	-	3	Yes	-	15	S	-	X
4A	6X40	0	2-4-2	-	4	Yes	-	5	S	-	X
6A,6B	6X6	70	4	-	6	Yes	-	-	S	-	X

4 Phase Fully Actuated Fayetteville Signal System

NOTES

- Refer to "Roadway Standard Drawings NCDOT" dated January 2012 and "Standard Specifications for Roads and Structures" dated January 2012.
- Do not program signal for late night flashing operation unless otherwise directed by the Engineer.
- Phase 1 may be lagged.
- The order of phase 3 and phase 4 may be reversed.
- Set all detector units to presence mode.
- Locate new cabinet so as not to obstruct sight distance of vehicles turning right on red.
- Omit "WALK" and flashing "DON'T WALK" with no pedestrian calls.
- Program pedestrian heads to countdown the flashing "Don't Walk" time only.
- Pavement markings are existing.
- Maximum times shown in timing chart are for free-run operation only. Coordinated signal system timing values supersede these values.



FEATURE	ASC/3 TIMING CHART				
	1	2	3	4	6
Min Green *	7	10	7	7	10
Walk *	0	7	7	7	7
Ped Clear	0	22	20	24	11
Veh. Extension *	2.0	3.0	2.0	2.0	3.0
Max I *	25	60	20	20	60
Yellow	3.0	4.0	3.0	3.5	4.0
Red Clear	2.4	1.7	2.9	2.5	1.7
Actuations B4 Add *	-	-	-	-	-
Seconds / Actuation *	-	-	-	-	-
Max Initial *	-	-	-	-	-
Time Before Reduction *	-	-	-	-	-
Time To Reduce *	-	-	-	-	-
Minimum Gap	-	-	-	-	-
Locking Detector	-	X	-	-	X
Recall Position	-	SOFT RECALL	-	-	SOFT RECALL
Dual Entry	-	-	-	-	-
Simultaneous Gap	X	X	X	X	X

* These values may be field adjusted. Do not adjust Min Green and Extension times for phases 2 and 6 lower than what is shown. Min Green for all other phases should not be lower than 4 seconds.

LEGEND

- | | | | |
|--|---|--|--|
| | PROPOSED Traffic Signal Head | | EXISTING Traffic Signal Head |
| | PROPOSED Modified Signal Head | | EXISTING Modified Signal Head |
| | PROPOSED Pedestrian Signal Head With Push Button & Sign | | EXISTING Pedestrian Signal Head |
| | PROPOSED Signal Pole with Guy | | EXISTING Signal Pole with Guy |
| | PROPOSED Signal Pole with Sidewalk Guy | | EXISTING Signal Pole with Sidewalk Guy |
| | PROPOSED Metal Pole with Mastarm | | EXISTING Metal Pole with Mastarm |
| | PROPOSED Inductive Loop Detector | | EXISTING Inductive Loop Detector |
| | PROPOSED Controller & Cabinet | | EXISTING Controller & Cabinet |
| | PROPOSED Junction Box | | EXISTING Junction Box |
| | PROPOSED 2-in Underground Conduit | | EXISTING 2-in Underground Conduit |
| | PROPOSED Right of Way | | EXISTING Right of Way |
| | PROPOSED Directional Arrow | | EXISTING Directional Arrow |
| | PROPOSED Wheel Chair Ramp | | EXISTING Wheel Chair Ramp |
| | PROPOSED Fence | | EXISTING Fence |
| | PROPOSED "Street Name" Sign | | EXISTING "Street Name" Sign |

Signal Upgrade

Prepared In the Offices of:
 TRANSPORTATION MOBILITY AND SAFETY DIVISION
 NORTH CAROLINA DEPARTMENT OF TRANSPORTATION
 Signal Design Section
 750 N. Greenfield Pkwy, Garner, NC 27529

NC 210 (Murchison Road) at Coley Drive/W.T. Brown Drive

Division 6 Cumberland County Fayetteville
 PLAN DATE: April 2016 REVIEWED BY: PLA, PE
 PREPARED BY: EM Minshew REVIEWED BY:

REVISIONS INIT. DATE

SCALE: 1"=20'

DOCUMENT NOT CONSIDERED FINAL UNLESS ALL SIGNATURES COMPLETED

SEAL
 NORTH CAROLINA PROFESSIONAL ENGINEER
 SEAL 029904
 JASON P. GALLAWAY
 9/7/2016
 DATE
 SIG. INVENTORY NO. 06-1265

07-650-2016_08-18
 C:\WITS\ASU\ITS_Signal\Seal\Signal_Design_Section\Eastern_Region\04\U-5742_Fayetteville_ASC3\66-1265-061265_s1a_dsn_2016mmds.dgn
 7:responce