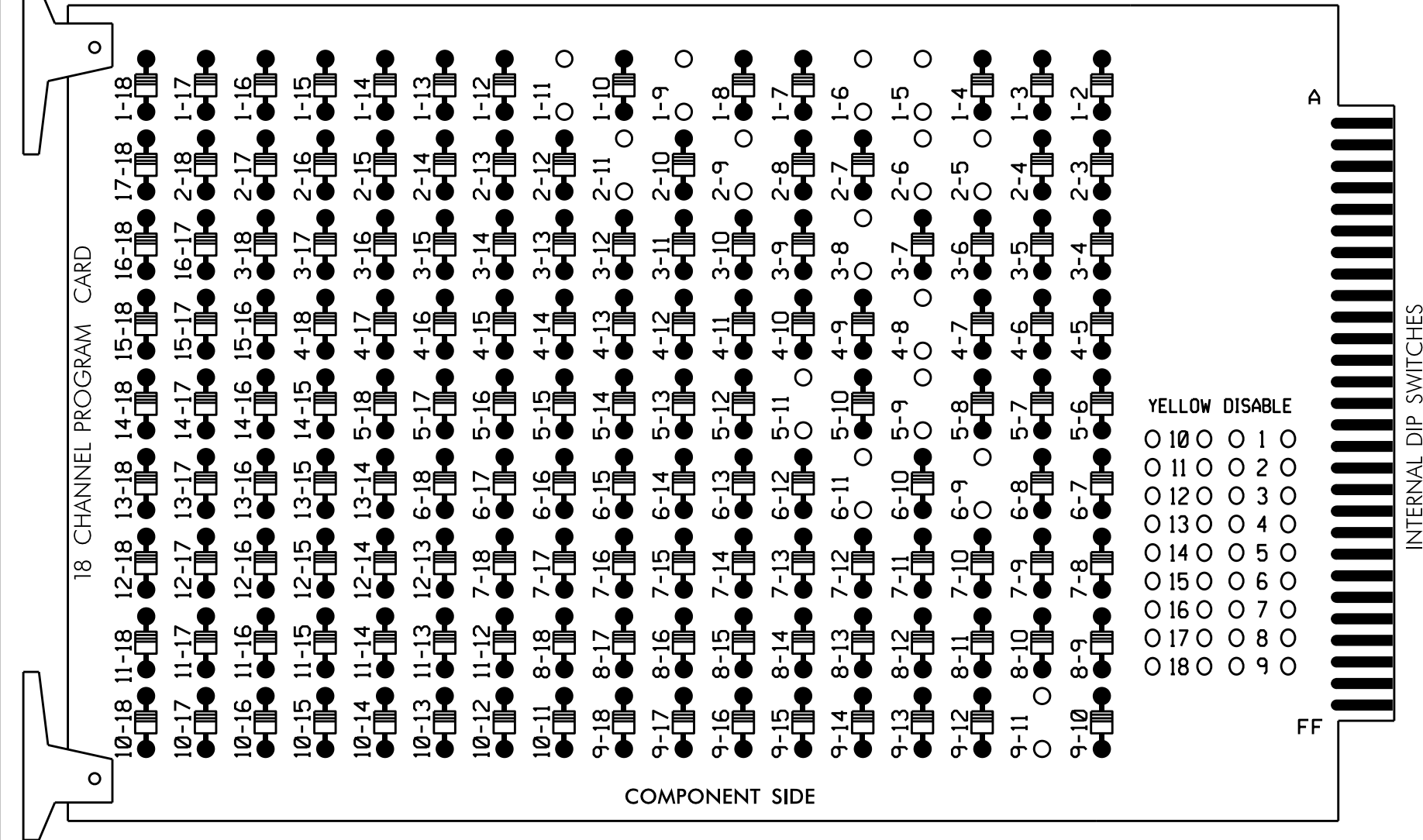


EDI MODEL 2018ECLIP-NC CONFLICT MONITOR PROGRAMMING DETAIL

(remove jumpers and set switches as shown)

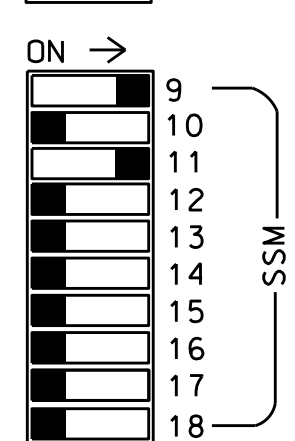
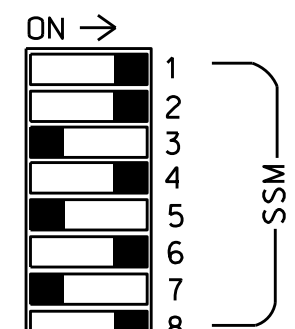
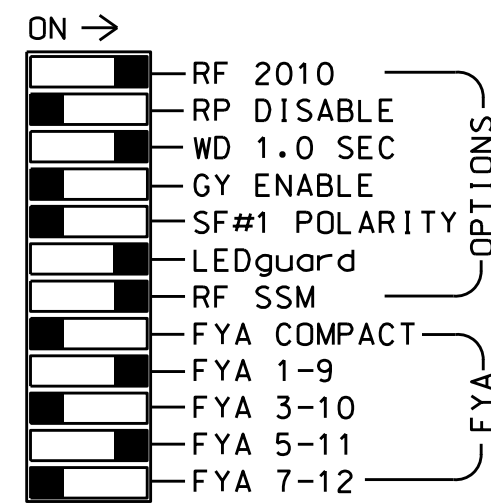
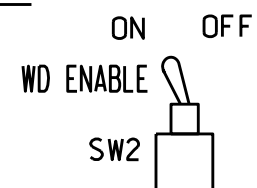
REMOVE DIODE JUMPERS 1-5, 1-6, 1-9, 1-11, 2-5, 2-6, 2-9, 2-11, 3-8, 4-8, 5-9, 5-11, 6-9, 6-11 AND 9-11.



REMOVE JUMPERS AS SHOWN

NOTES:

- Card is provided with all diode jumpers in place. Removal of any jumper allows its channels to run concurrently.
- Ensure jumpers SEL2-SEL5 and SEL9 are present on the monitor board.
- Ensure that Red Enable is active at all times during normal operation.
- Integrate monitor with Ethernet network in cabinet.



■ = DENOTES POSITION OF SWITCH

NOTES

- To prevent "flash-conflict" problems, insert red flash program blocks for all unused vehicle load switches in the output file. The installer shall verify that signal heads flash in accordance with the Signal Plans.
- Program phases 4 and 8 for Dual Entry.
- Enable Simultaneous Gap-Out for all phases.
- Program phases 2 and 6 for volume density operation.
- Program controller to start up in phase 2 Green and 6 Green.
- The cabinet and controller are part of the Fayetteville Signal System.

EQUIPMENT INFORMATION

CONTROLLER.....2070E
 CABINET.....332 W/AUX
 SOFTWARE.....ECONOLITE ASC/3-2070
 CABINET MOUNT.....BASE
 OUTPUT FILE POSITIONS...18 WITH AUX. OUTPUT FILE
 LOAD SWITCHES USED.....S1,S2,S4,S5,S7,S8,S11,AUX S1,
 AUX S4
 PHASES USED.....1,2,**3,4,5,6,8
 OVERLAP "A".....*
 OVERLAP "B".....NOT USED
 OVERLAP "C".....*
 OVERLAP "D".....NOT USED
 * See overlap programming detail on sheet 2
 ** Used only during RR Preempt Clear

SIGNAL HEAD HOOK-UP CHART

LOAD SWITCH NO.	S1	S2	S3	S4	S5	S6	S7	S8	S9	S10	S11	S12	AUX S1	AUX S2	AUX S3	AUX S4	AUX S5	AUX S6
CMU CHANNEL NO.	1	2	13	3	4	14	5	6	15	7	8	16	9	10	17	11	12	18
PHASE	1	2	2 PED	3	4	4 PED	5	6	6 PED	7	8	8 PED	OLA	OLB	SPARE	OLC	OLD	SPARE
SIGNAL HEAD NO.	11*	82	21,22	NU	81	41,42	NU	51*	61,62	NU	NU	81,82	NU	11*	NU	NU	51*	NU
RED	*	128			101			134			107							
YELLOW		129		*	102		*	135			108							
GREEN		130			103			136			109							
RED ARROW													A121				A114	
YELLOW ARROW		126											A122				A115	
FLASHING YELLOW ARROW													A123				A116	
GREEN ARROW	127	127			118			133										

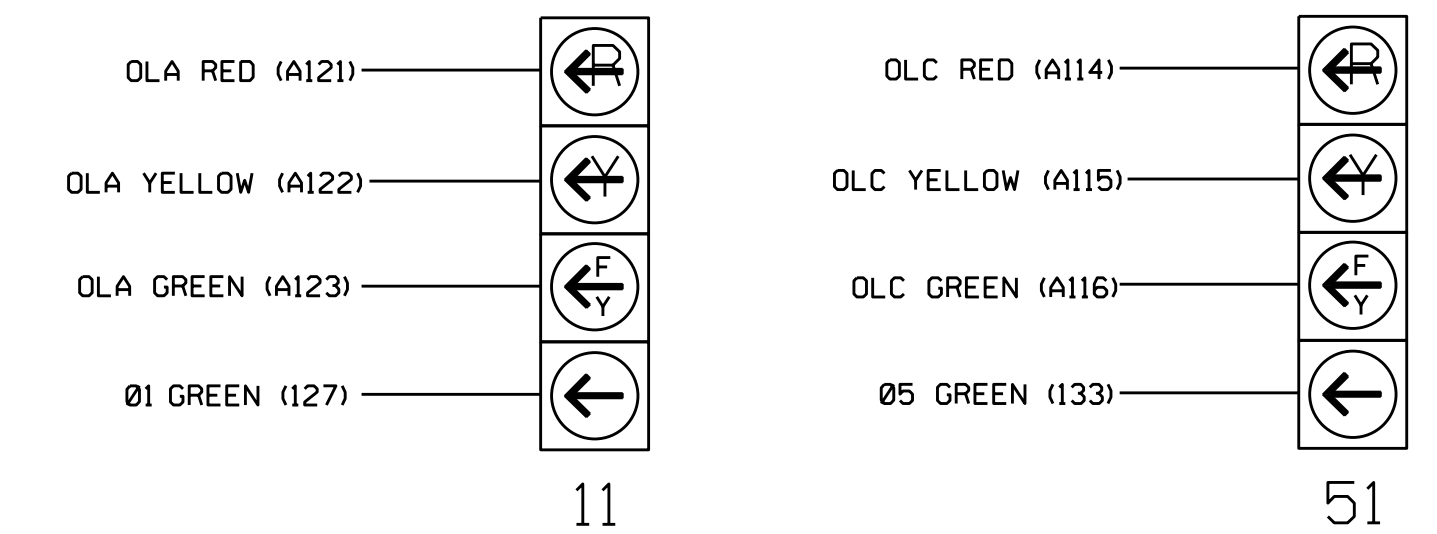
NU = Not Used

* Denotes install load resistor. See load resistor installation detail this sheet.

* See pictorial of head wiring in detail this sheet.

FYA SIGNAL WIRING DETAIL

(wire signal heads as shown)



INPUT FILE POSITION LAYOUT

(front view)

FILE	1	2	3	4	5	6	7	8	9	10	11	12	13	14
U	Ø 1	Ø 1	Ø 2	Ø 3	Ø 4	Ø 5	Ø 6	Ø 7	Ø 8	Ø 9	Ø 10	Ø 11	Ø 12	Ø 13
I	1A	1B	2A,2B	3A	4A	5A	6A	7A	8A	9A	10A	11A	12A	13A
L	NOT USED	NOT USED	NOT USED	DC ISOLATOR	NOT USED	DC ISOLATOR	DC ISOLATOR	DC ISOLATOR	DC ISOLATOR	DC ISOLATOR	DC ISOLATOR	DC ISOLATOR	DC ISOLATOR	DC ISOLATOR
U	Ø 5	Ø 6	Ø 7	Ø 8	Ø 9	Ø 10	Ø 11	Ø 12	Ø 13	Ø 14	Ø 15	Ø 16	Ø 17	PRE1
J	5A	6A,6B	7A	8A	9A	10A	11A	12A	13A	14A	15A	16A	17A	AC ISOLATOR
L	NOT USED	NOT USED	DC ISOLATOR	NOT USED	DC ISOLATOR	DC ISOLATOR	DC ISOLATOR	DC ISOLATOR	DC ISOLATOR	DC ISOLATOR	DC ISOLATOR	DC ISOLATOR	DC ISOLATOR	NOT USED

EX.: 1A, 2A, ETC. = LOOP NO.'S

FS = FLASH SENSE
 ST = STOP TIME
 PRE = RR PREEMPT

⊗ Wired Input - Do not populate slot with detector cord

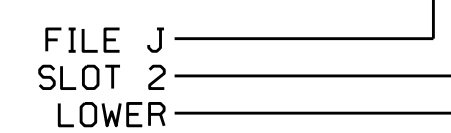
INPUT FILE CONNECTION & PROGRAMMING CHART

LOOP NO.	LOOP TERMINAL	INPUT FILE POS.	PIN NO.	DETECTOR NO.	NEMA PHASE	CALL	EXTEND TIME	DELAY TIME	DETECTOR TYPE
1A ¹	TB2-1,2	I1U	56	1	1	YES		15	S
	-	J4U	48	26	6	YES		3	G
1B	TB2-5,6	I2U	39	2	1	YES		15	S
2A,2B	TB2-9,10	I3U	63	32	2	YES			N
4A	TB4-9,10	I6U	41	4	4	YES		10	S
5A ²	TB3-1,2	J1U	55	5	5	YES		15	S
	-	I4U	47	22	2	YES		3	G
6A,6B	TB3-5,6	J2U	40	6	6	YES			N
8A	TB5-9,10	J6U	42	8	8	YES		3	S

¹Add jumper from I1-W to J4-W, on rear of input file.

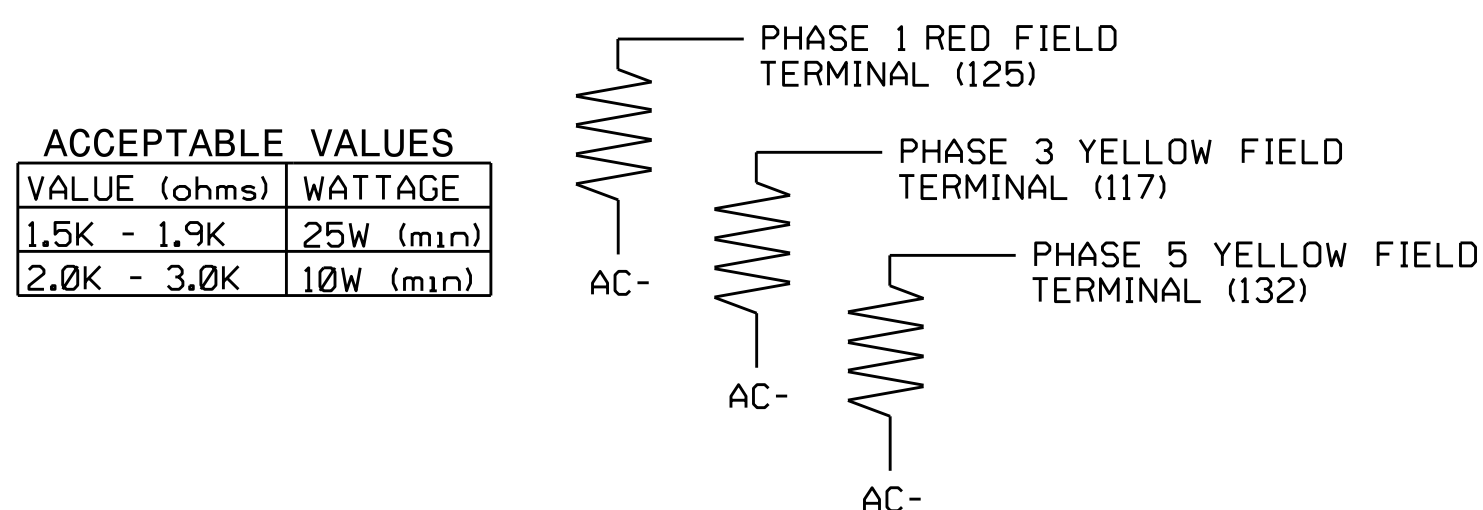
²Add jumper from J1-W to I4-W, on rear of input file.

INPUT FILE POSITION LEGEND: J2L



LOAD RESISTOR INSTALLATION DETAIL

(install resistors as shown)



VALUE (ohms)	WATTAGE
1.5K - 1.9K	25W (min)
2.0K - 3.0K	10W (min)

Electrical Detail Sheet 1 of 3

DOCUMENT NOT CONSIDERED FINAL UNLESS ALL SIGNATURES COMPLETED

NC 210 (Murchison Road) at SR 1614 (Shaw Mill Road) / SR 2734 (Hogan Street)

Division 6 Cumberland County Fayetteville

PLAN DATE: July 2016 REVIEWED BY: BAS

PREPARED BY: James Peterson REVIEWED BY:

REVISIONS INIT. DATE

750 N. Greenfield Pkwy, Garner, NC 27529

SEAL NORTH CAROLINA PROFESSIONAL ENGINEER KEITH M. MEWS

DocuSigned by: Keith M. Mews 9/22/2016

SIG. INVENTORY NO. 06-0333