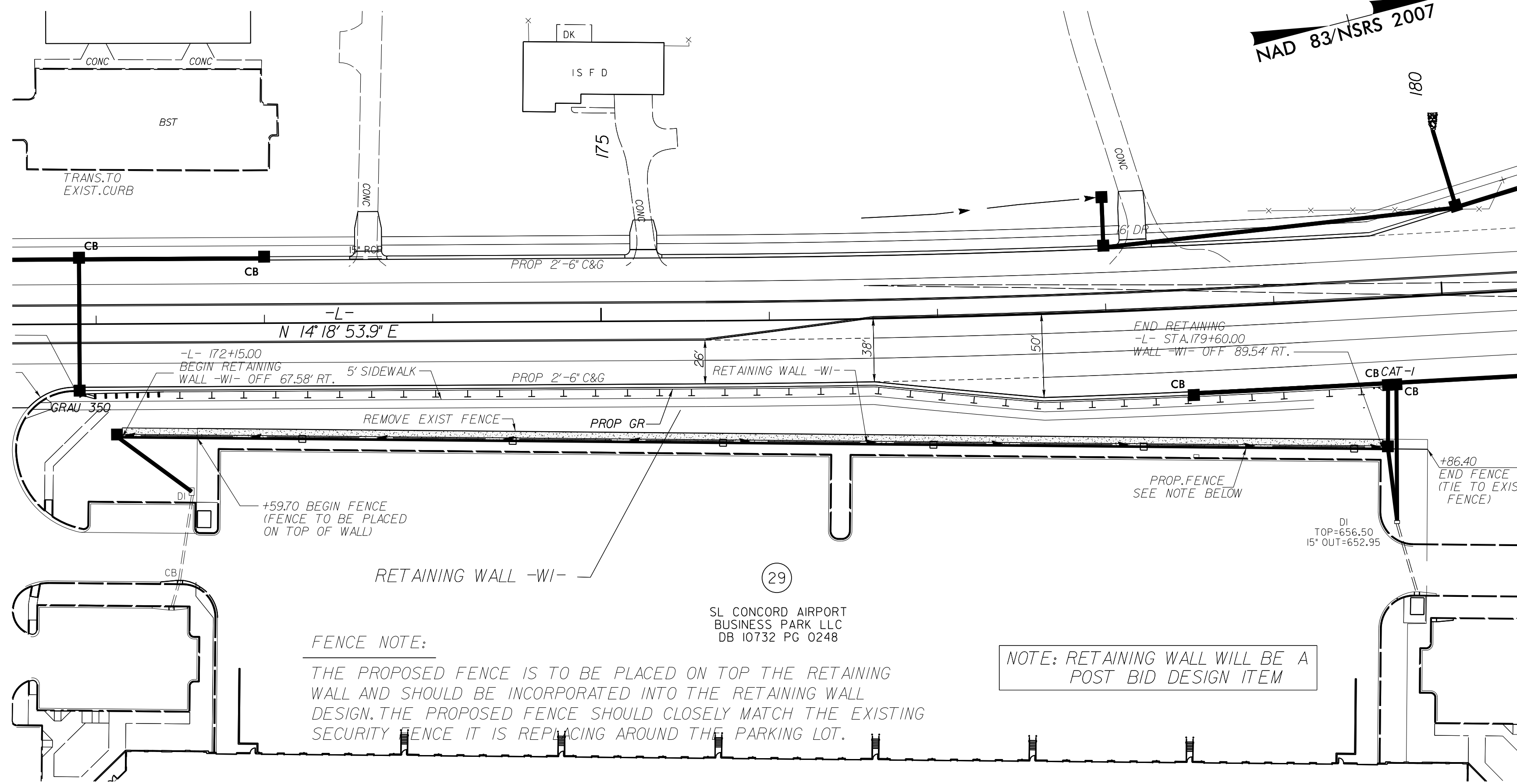


**This electronic collection of documents is provided
for the convenience of the user
and is Not a Certified Document –**

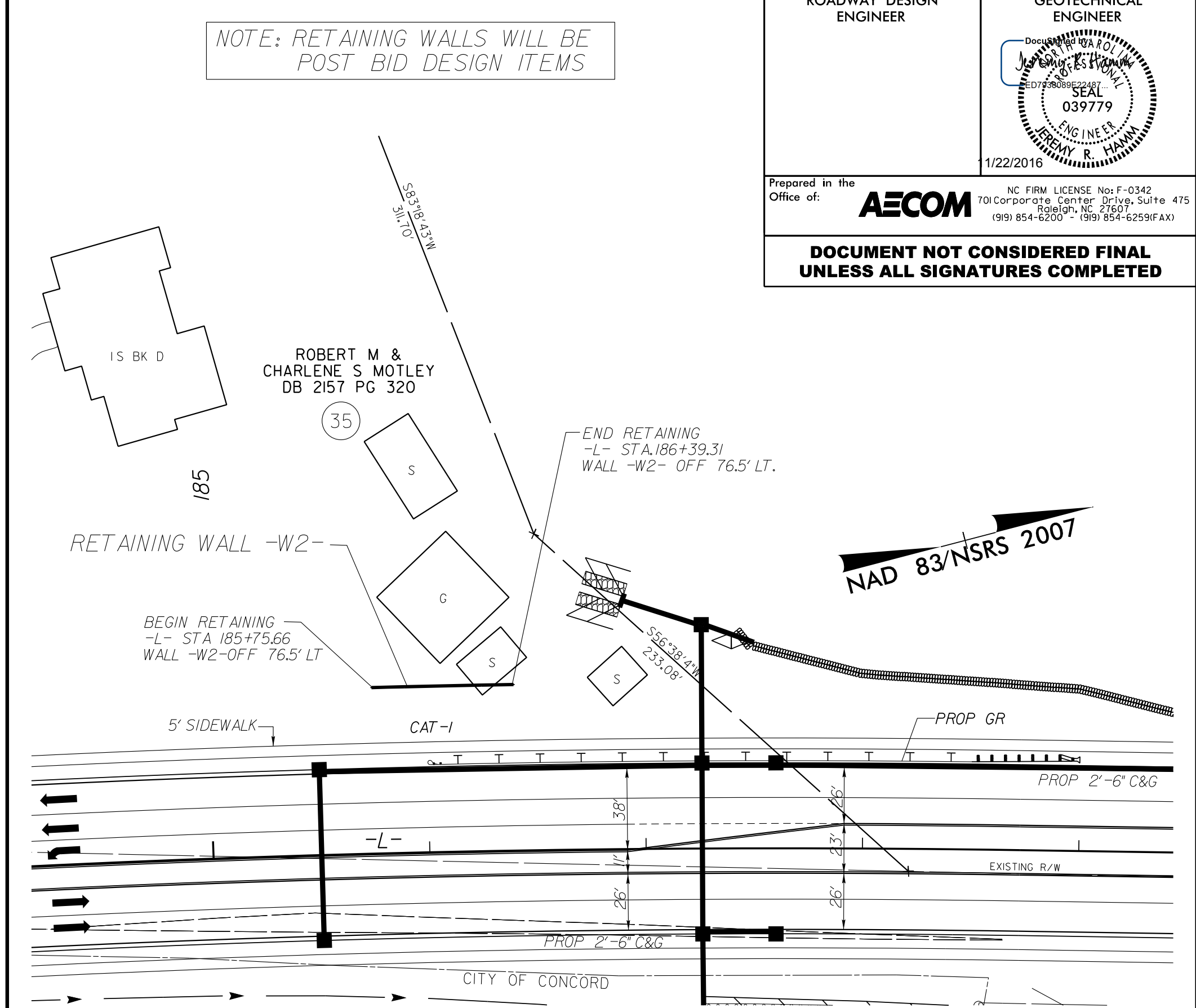
**The documents contained herein were originally issued
and sealed by the individuals whose names and license
numbers appear on each page, on the dates appearing
with their signature on that page.**

**This file or an individual page
shall not be considered a certified document.**

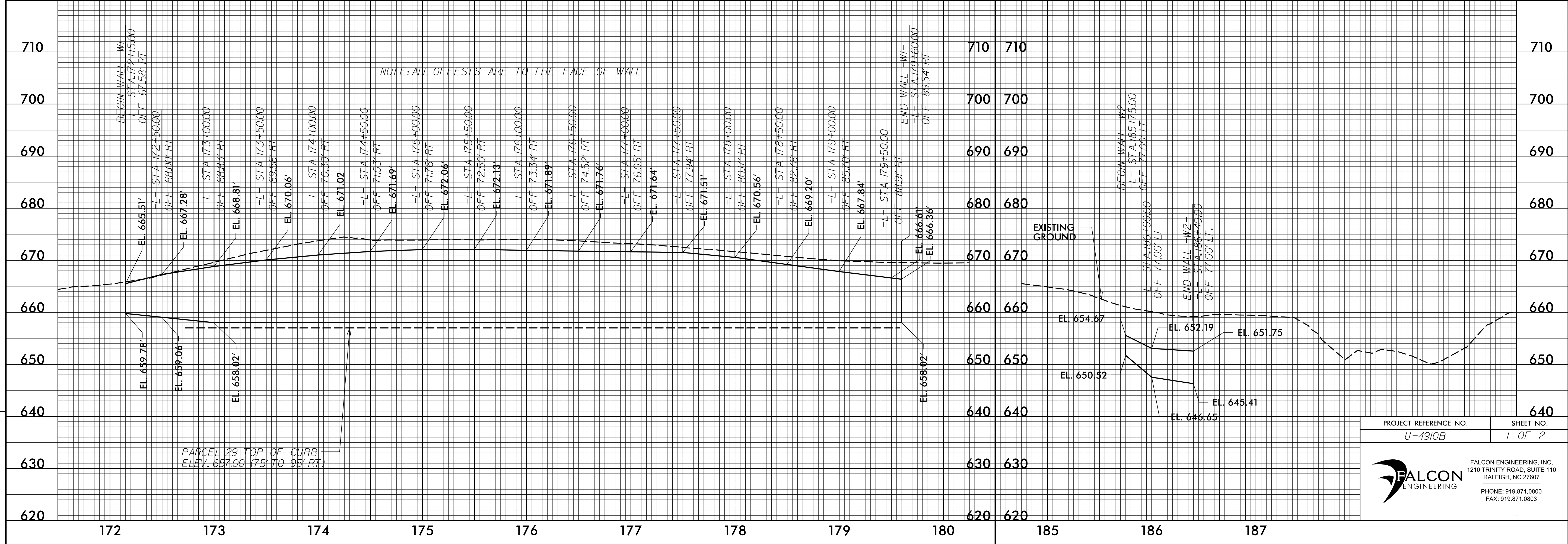
RETAINING WALL DETAIL -W1-



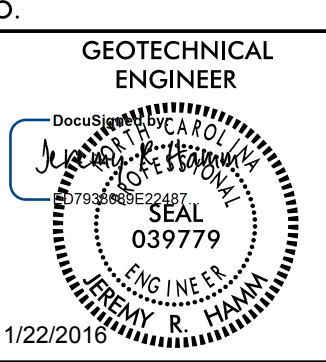
RETAINING WALL DETAIL -W2-

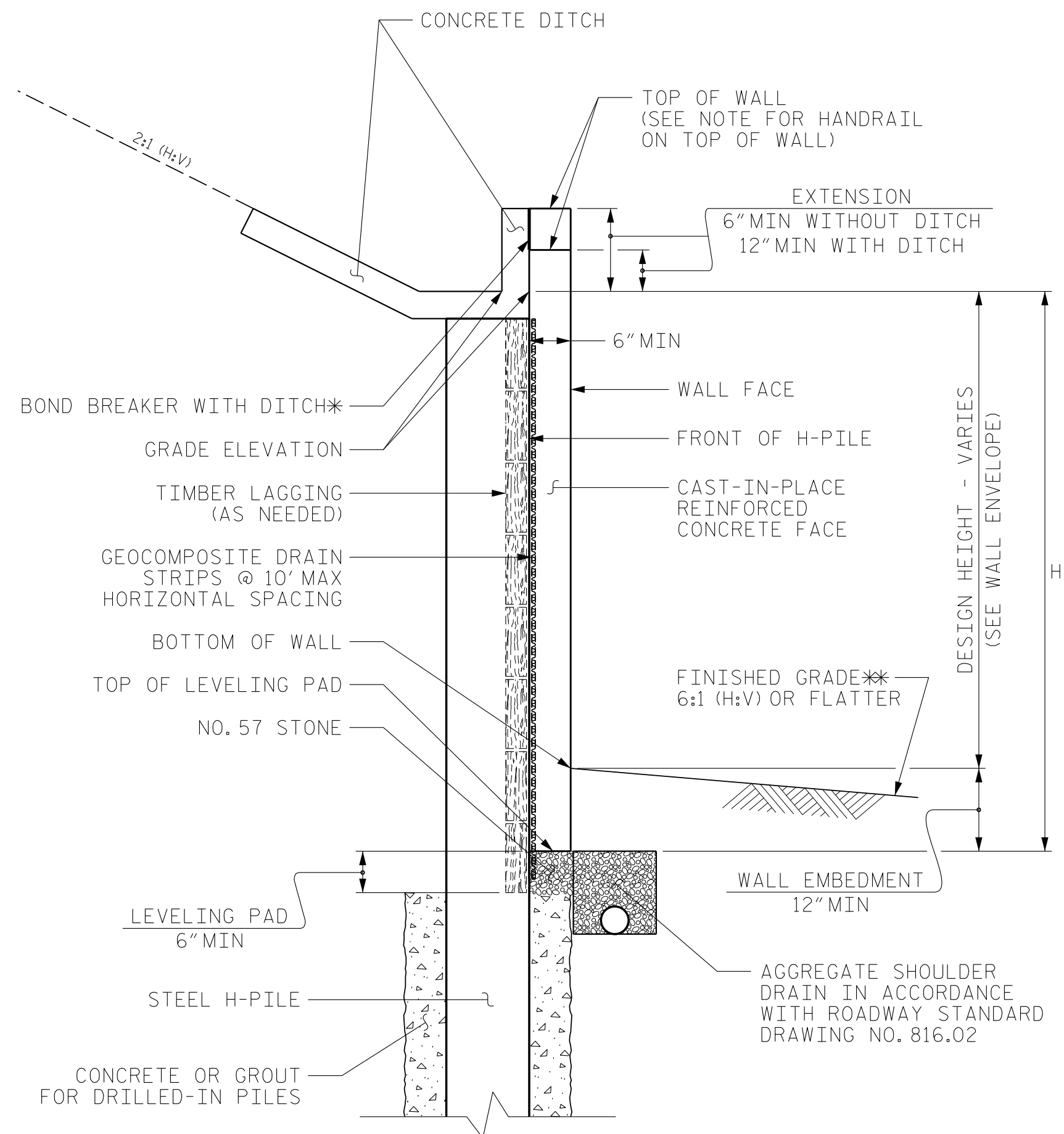


PROJECT REFERENCE NO. U-4910B	SHEET NO. W-1
RW SHEET NO.	
ROADWAY DESIGN ENGINEER	GEOTECHNICAL ENGINEER
Prepared in the Office of: AECOM NC FIRM LICENSE No. F-0342 701 Corporate Center Drive, Suite 475 Raleigh, NC 27607 (919) 854-6200 • (919) 854-6259(FAX)	
DOCUMENT NOT CONSIDERED FINAL UNLESS ALL SIGNATURES COMPLETED	



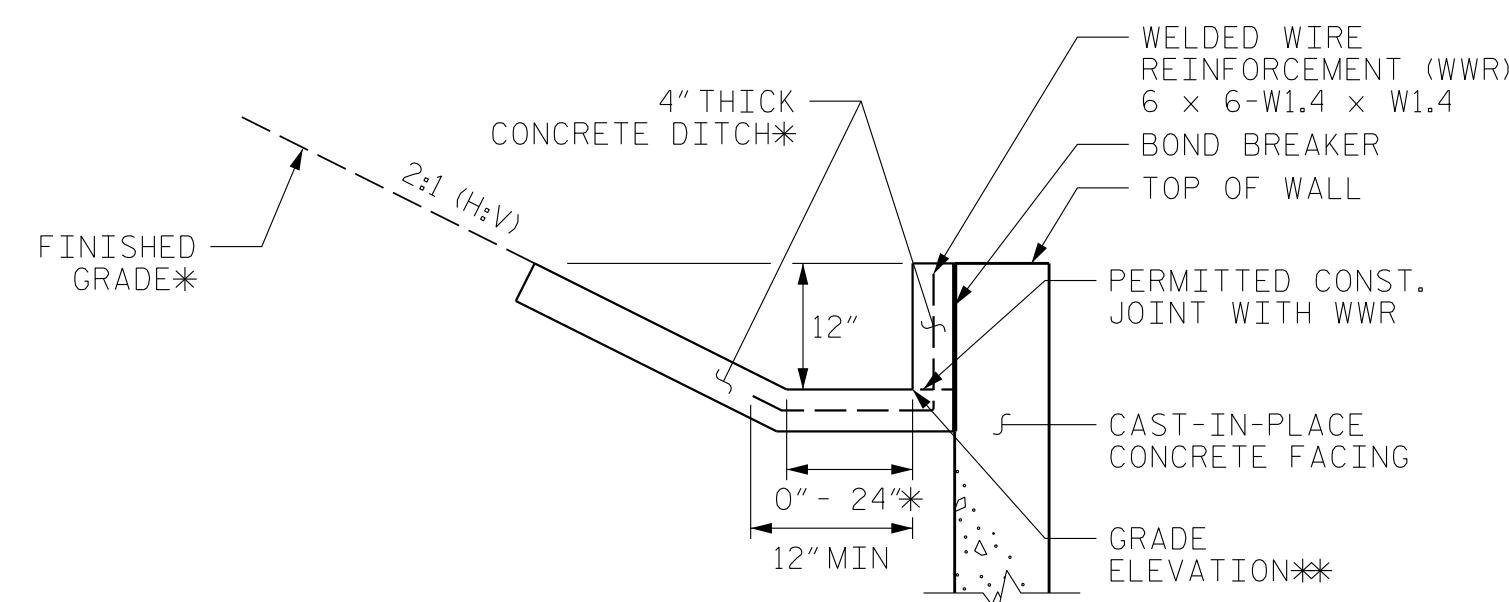
PROJECT REFERENCE NO. U-4910B	SHEET NO. 1 OF 2
FALCON ENGINEERING, INC. 1210 TRINITY ROAD, SUITE 110 RALEIGH, NC 27607 PHONE: 919.871.0800 FAX: 919.871.0803	

PROJECT REFERENCE NO. <i>U-4910B</i>	SHEET NO. <i>W-2</i>
RW SHEET NO.	
GEOTECHNICAL ENGINEER 	
Prepared in the Office of:	FALCON ENGINEERING, INC. LICENSE C-3193 1210 TRINITY ROAD, SUITE 110 RALEIGH, NC 27607 PHONE: 919.871.0800 FAX: 919.871.0803
DOCUMENT NOT CONSIDERED FINAL UNLESS ALL SIGNATURES COMPLETED	



**SOLDIER PILE WALL WITH
CAST-IN-PLACE FACE - TYPICAL SECTION**

*SEE CONCRETE DITCH BEHIND WALL DETAILS.
*SEE PLANS FOR FINISHED GRADE DETAILS.



**CONCRETE DITCH BEHIND
WALL WITH CONCRETE FACING**

*SEE ROADWAY PLANS FOR CONCRETE DITCH AND FINISHED GRADE DETAILS.
*SEE WALL ENVELOPE FOR GRADE ELEVATIONS.

FOR CONCRETE DITCHES, SEE SECTION 850 OF THE STANDARD SPECIFICATIONS.

NOTES:

FOR SOLDIER PILE RETAINING WALLS, SEE SOLDIER PILE RETAINING WALLS PROVISION.

FOR STEEL BEAM GUARDRAIL, SEE ROADWAY PLANS AND SECTION 862 OF THE STANDARD SPECIFICATIONS.

A FENCE IS REQUIRED ON TOP OF RETAINING WALL NO. 1. SEE ROADWAY PLANS FOR FENCE OR HANDRAIL ATTACHMENT DETAILS.

AT THE CONTRACTOR'S OPTION, USE DRIVEN H-PILES FOR RETAINING WALL NO. 1.

USE A SOLDIER PILE RETAINING WALL WITH A CAST-IN-PLACE REINFORCED CONCRETE FACE FOR RETAINING WALL NO. 1.

BEFORE BEGINNING SOLDIER PILE WALL DESIGN FOR RETAINING WALL NO. 1, SURVEY WALL LOCATION AND SUBMIT A REVISED WALL PROFILE VIEW (WALL ENVELOPE) FOR REVIEW. DO NOT START WALL DESIGN OR CONSTRUCTION UNTIL THE REVISED WALL ENVELOPE IS ACCEPTED.

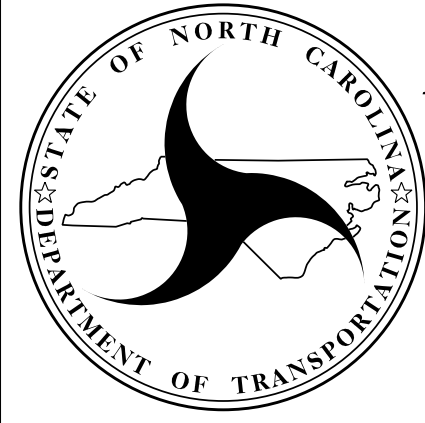
DESIGN RETAINING WALL NO. 1 FOR THE FOLLOWING:

- 1) H = DESIGN HEIGHT + WALL EMBEDMENT
- 2) DESIGN LIFE = 100 YEARS
- 3) MINIMUM WALL EMBEDMENT ELEVATION = 1 FT
- 4) MINIMUM PILE PENETRATION INTO ROCK = N/A
- 5) IN-SITU ASSUMED MATERIAL PARAMETERS ABOVE ELEVATION 664 FT:
 UNIT WEIGHT, $\gamma = 110$ LB/CF
 FRICTION ANGLE, $\phi = 28$ DEGREES
 COHESION, $c = 0$ LB/SF
- 6) IN-SITU ASSUMED MATERIAL PARAMETERS BELOW ELEVATION 664 FT:
 UNIT WEIGHT, $g = 120$ LB/CF
 FRICTION ANGLE, $f = 30$ DEGREES
 COHESION, $c = 0$ LB/SF
- 7) IN-SITU ASSUMED MATERIAL PARAMETERS BELOW ELEVATION 628 FT:
 UNIT WEIGHT, $g = 134$ LB/CF
 FRICTION ANGLE, $f = 34$ DEGREES
 COHESION, $c = 0$ LB/SF

DESIGN RETAINING WALL NO. 1 FOR A LIVE LOAD (TRAFFIC) SURCHARGE.

AT THE CONTRACTOR'S OPTION, USE A TEMPORARY SLOPE INSTEAD OF TEMPORARY SUPPORT OF EXCAVATIONS FOR RETAINING WALL NO. 1.

PROJECT NO.: **U-4910**
 CITY OF CONCORD, CABARRUS COUNTY
 STATION: **VARIES**
 SHEET 1 OF 1

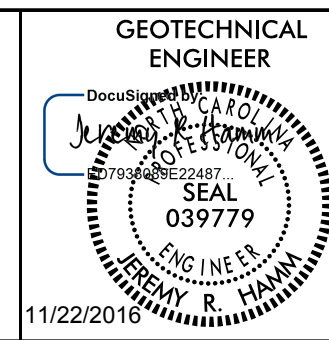



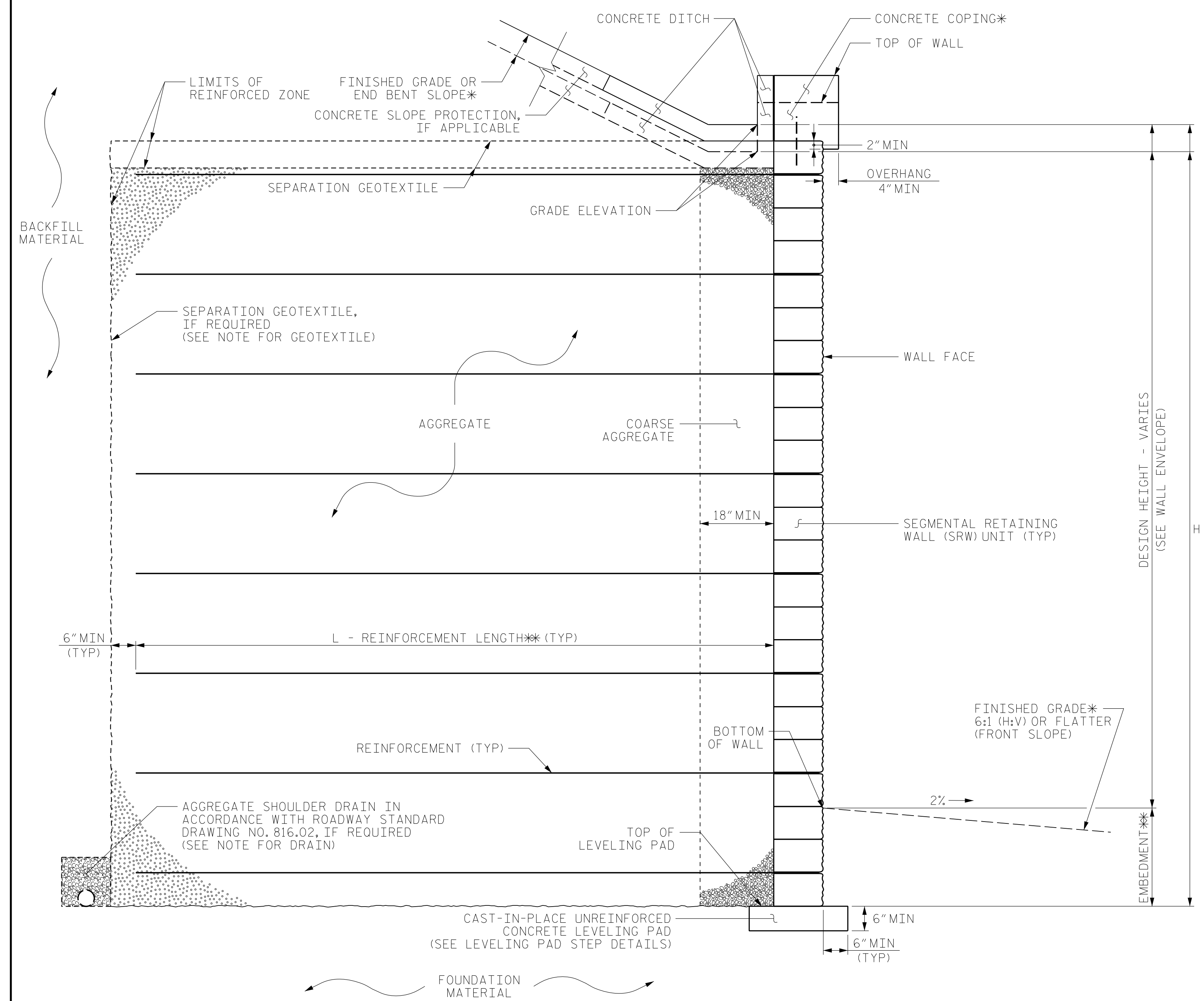
**NORTH CAROLINA
DEPARTMENT OF TRANSPORTATION
DIVISION OF HIGHWAYS**

**GEOTECHNICAL
ENGINEERING UNIT**

REVISIONS						SHEET NO.
NO.	BY	DATE	NO.	BY	DATE	
			3			2
			4			

PREPARED BY: HUNSBERGER, W. S.	DATE: 11/21
REVIEWED BY: HAMM, J. R.	DATE: 11/21

PROJECT REFERENCE NO. <i>U-4910B</i>	SHEET NO. <i>W-3</i>
RW SHEET NO.	
GEOTECHNICAL ENGINEER 	
Prepared in the Office of:  FALCON ENGINEERING, INC. LICENSE C-3193 1210 TRINITY ROAD, SUITE 110 RALEIGH, NC 27607 PHONE: 919.871.0800 FAX: 919.871.0803	
DOCUMENT NOT CONSIDERED FINAL UNLESS ALL SIGNATURES COMPLETED	



MSE WALL WITH SRW UNITS - TYPICAL SECTION

*SEE COPING DETAILS AND PLANS FOR FINISHED GRADE DETAILS.
 **SEE MSE RETAINING WALLS PROVISION AND IF APPLICABLE, MSE WALL NOTES FOR EMBEDMENT AND REINFORCEMENT LENGTH REQUIREMENTS.

NOTES:

FOR MECHANICALLY STABILIZED EARTH (MSE) RETAINING WALLS, SEE MECHANICALLY STABILIZED EARTH RETAINING WALLS PROVISION.
 FOR STEEL BEAM GUARDRAIL, SEE ROADWAY PLANS AND SECTION 862 OF THE STANDARD SPECIFICATIONS.
 USE AN MSE WALL SYSTEM WITH SEGMENTAL RETAINING WALL UNITS (SRW) UNITS THAT MEET ARTICLE 1040-4 OF THE STANDARD SPECIFICATIONS FOR RETAINING WALL NO. 2.
 AT THE CONTRACTOR'S OPTION, USE FINE AGGREGATE IN THE REINFORCED ZONE OF RETAINING WALL NO. 2.
 CAST-IN-PLACE REINFORCED CONCRETE COPING IS REQUIRED FOR RETAINING WALL NO. 2.
 A SEPARATION GEOTEXTILE IS NOT REQUIRED AT THE BACK OF THE REINFORCED ZONE FOR RETAINING WALL NO. 2.
 A DRAIN IS NOT REQUIRED FOR RETAINING WALL NO. 2.
 BEFORE BEGINNING MSE WALL DESIGN FOR RETAINING WALL NO. 2, SURVEY WALL LOCATION AND SUBMIT A REVISED WALL PROFILE VIEW (WALL ENVELOPE) FOR REVIEW. DO NOT START WALL DESIGN OR CONSTRUCTION UNTIL THE REVISED WALL ENVELOPE IS ACCEPTED.

DESIGN RETAINING WALL NO. 2 FOR THE FOLLOWING:
 1) H = DESIGN HEIGHT + EMBEDMENT
 2) DESIGN LIFE = 100 YEARS
 3) MAXIMUM FACTORED VERTICAL PRESSURE ON FOUNDATION MATERIAL = 2,000 LB/SF
 4) MINIMUM REINFORCEMENT LENGTH (L) = 6 FT
 5) MINIMUM EMBEDMENT DEPTH = 2 FT
 6) REINFORCED ZONE AGGREGATE PARAMETERS:

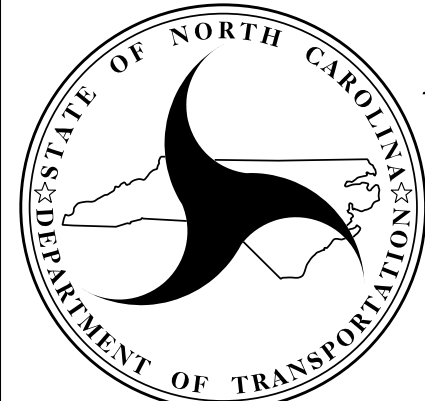
AGGREGATE TYPE*	UNIT WEIGHT (g) LB/CF	FRICTION ANGLE (f) DEGREES	COHESION (c) LB/SF
COARSE	110	38	0
FINE	115	34	0

7) IN-SITU ASSUMED MATERIAL PARAMETERS:

MATERIAL TYPE	UNIT WEIGHT (g) LB/CF	FRICTION ANGLE (f) DEGREES	COHESION (c) LB/SF
BACKFILL	120	30	0
FOUNDATION	110	28	0

EXISTING OR FUTURE OBSTRUCTIONS SUCH AS FOUNDATIONS, GUARDRAIL, FENCE OR HANDRAIL POSTS, PAVEMENTS, PIPES, INLETS OR UTILITIES MAY INTERFERE WITH REINFORCEMENT FOR RETAINING WALL NO. 2.
 DO NOT PLACE LEVELING PAD CONCRETE, AGGREGATE OR REINFORCEMENT FOR RETAINING WALL NO. 2 UNTIL EXCAVATION DIMENSIONS AND FOUNDATION MATERIAL ARE APPROVED.
 AT THE CONTRACTOR'S OPTION, "TEMPORARY SHORING FOR WALL CONSTRUCTION" MAY BE USED TO CONSTRUCT RETAINING WALL NO. 2. SEE MSE RETAINING WALLS PROVISION FOR TEMPORARY SHORING FOR WALL CONSTRUCTION.

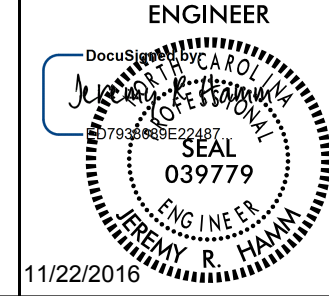

PREPARED BY: HUNSBERGER, W. S.	DATE: 11/21
REVIEWED BY: HAMM, J. R.	DATE: 11/21

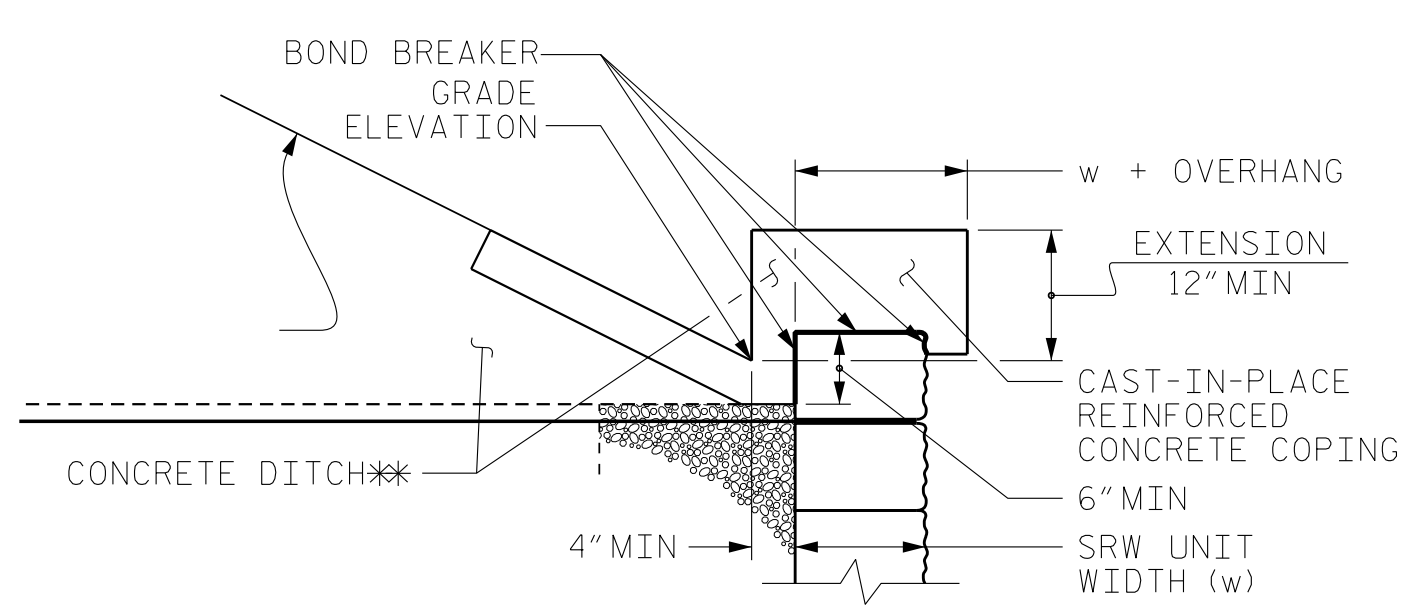
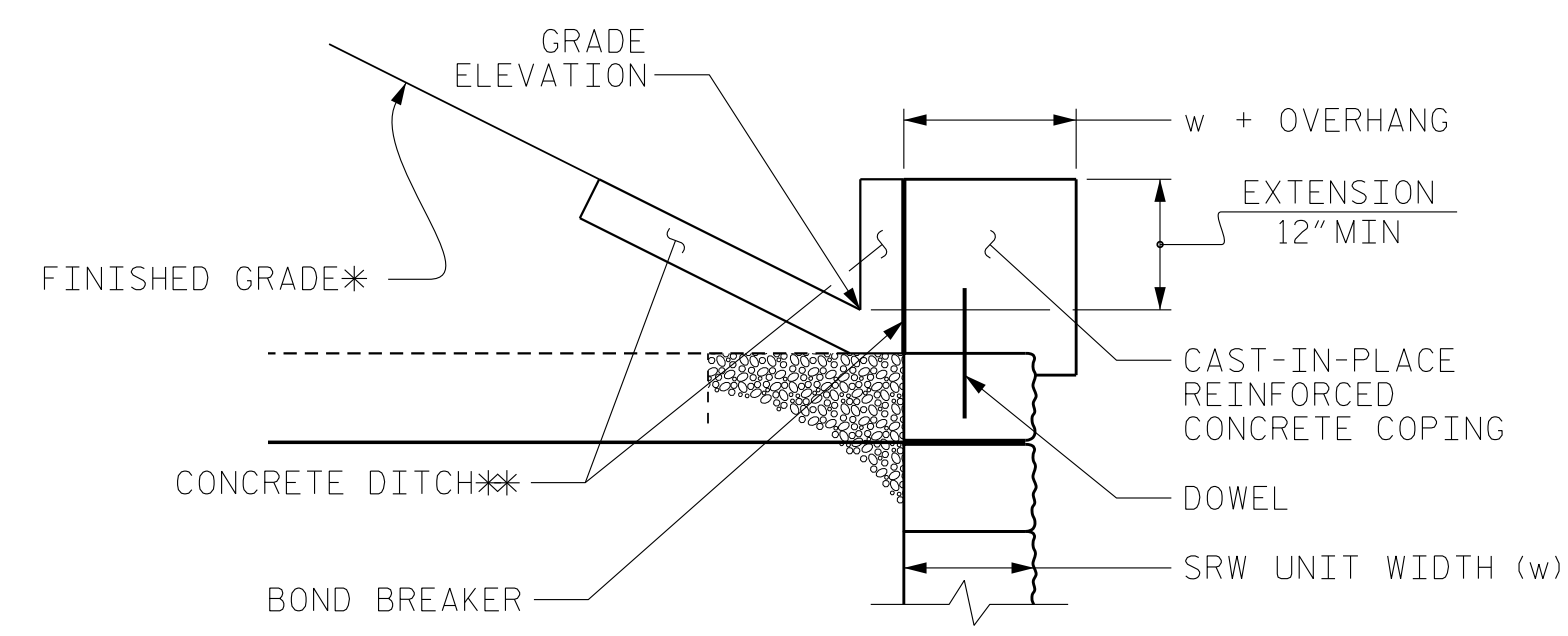

**NORTH CAROLINA
 DEPARTMENT OF TRANSPORTATION
 DIVISION OF HIGHWAYS**

**GEOTECHNICAL
 ENGINEERING UNIT**

PROJECT NO.: **U-4910**
 CITY OF CONCORD, CABARRUS COUNTY
 STATION: **VARIES**
 SHEET 1 OF 2

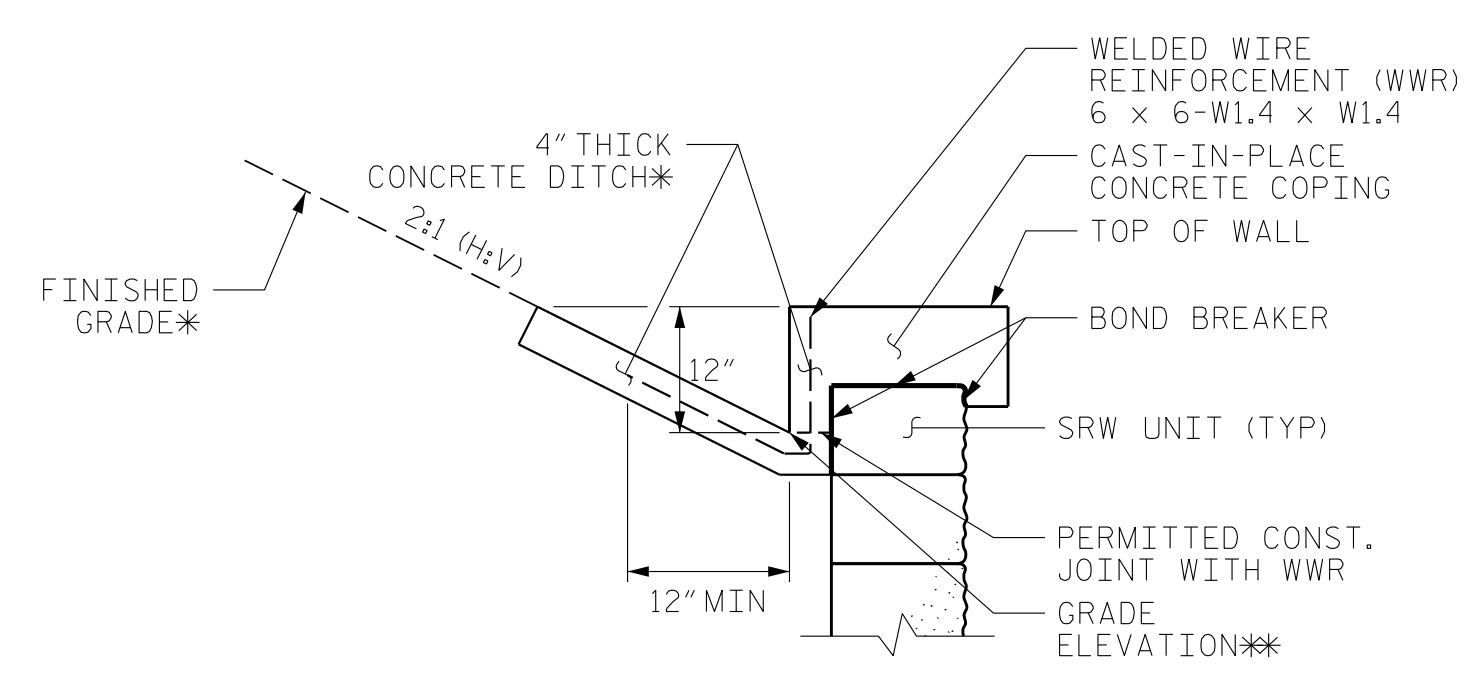
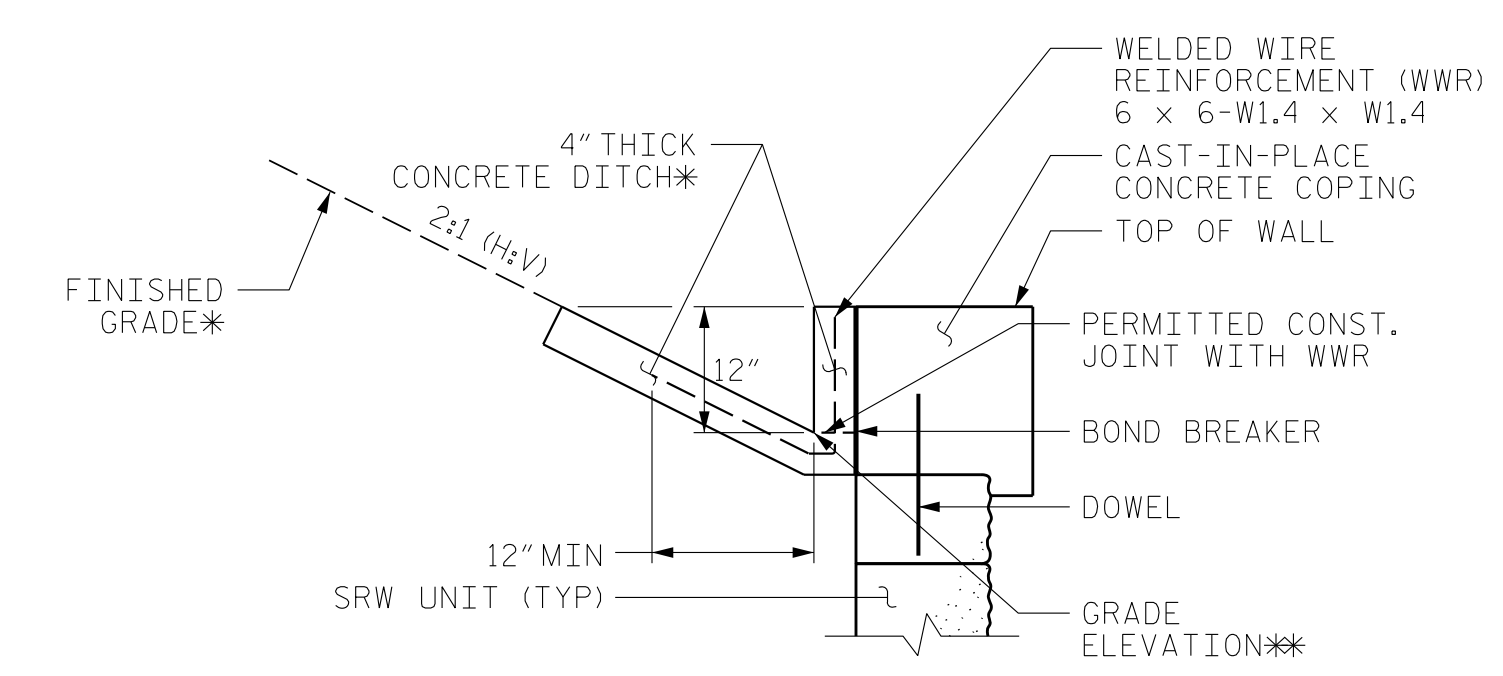
REVISIONS						SHEET NO.
NO.	BY	DATE	NO.	BY	DATE	
			3			3
			4			

PROJECT REFERENCE NO. <i>U-4910B</i>	SHEET NO. <i>W-4</i>
RW SHEET NO.	
GEOTECHNICAL ENGINEER  11/22/2016	
Prepared in the Office of:  FALCON ENGINEERING 1210 TRINITY ROAD, SUITE 110 RALEIGH, NC 27607 PHONE: 919.871.0800 FAX: 919.871.0803	FALCON ENGINEERING, INC. LICENSE C-3193 1210 TRINITY ROAD, SUITE 110 RALEIGH, NC 27607 PHONE: 919.871.0800 FAX: 919.871.0803
DOCUMENT NOT CONSIDERED FINAL UNLESS ALL SIGNATURES COMPLETED	



COPING DETAILS

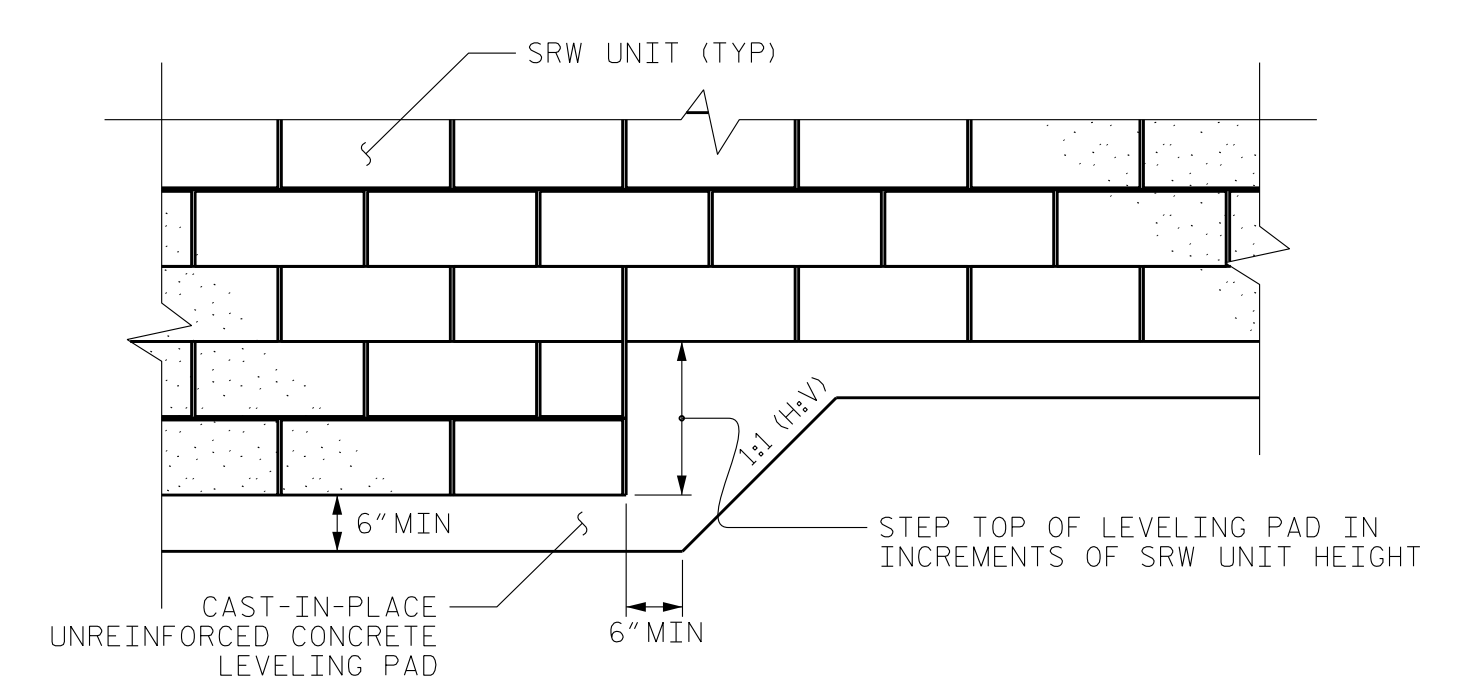
AT THE CONTRACTOR'S OPTION, CONNECT COPING TO SRW UNITS WITH DOWELS OR EXTEND COPING DOWN BACK OF SRW UNITS.
 *SEE PLANS FOR FINISHED GRADE OR END BENT SLOPE DETAILS.
 **SEE CONCRETE DITCH BEHIND WALL DETAILS.



CONCRETE DITCH BEHIND WALL WITH CONCRETE COPING

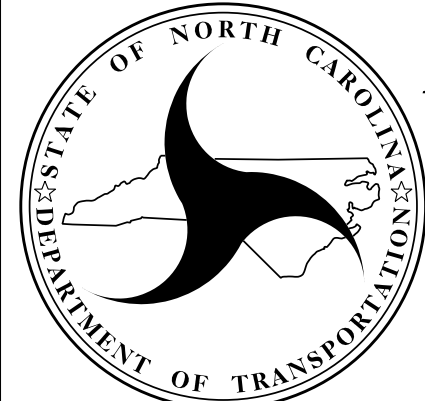
*SEE ROADWAY PLANS FOR CONCRETE DITCH AND FINISHED GRADE DETAILS.
 **SEE WALL ENVELOPE FOR GRADE ELEVATIONS.

FOR CONCRETE DITCHES, SEE SECTION 850 OF THE STANDARD SPECIFICATIONS.



LEVELING PAD STEP DETAILS

PROJECT NO.: U-4910
 CITY OF CONCORD, CABARRUS COUNTY
 STATION: VARIES
 SHEET 2 OF 2



**NORTH CAROLINA
DEPARTMENT OF TRANSPORTATION
DIVISION OF HIGHWAYS**

**GEOTECHNICAL
ENGINEERING UNIT**

REVISIONS						SHEET NO. 4
NO.	BY	DATE	NO.	BY	DATE	
			3			
			4			

PREPARED BY: HUNSBERGER, W. S.	DATE: 11/21
REVIEWED BY: HAMM, J. R.	DATE: 11/21