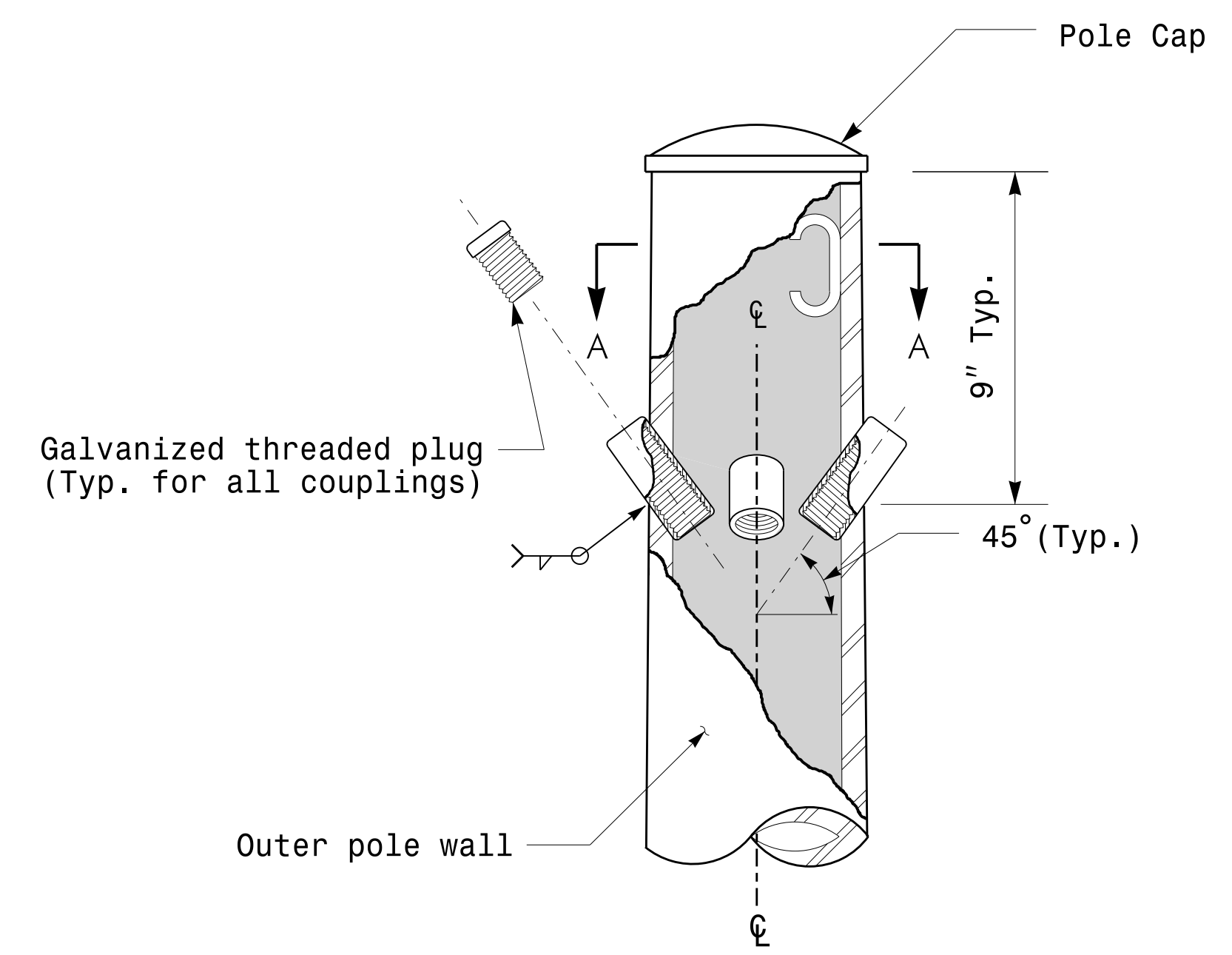
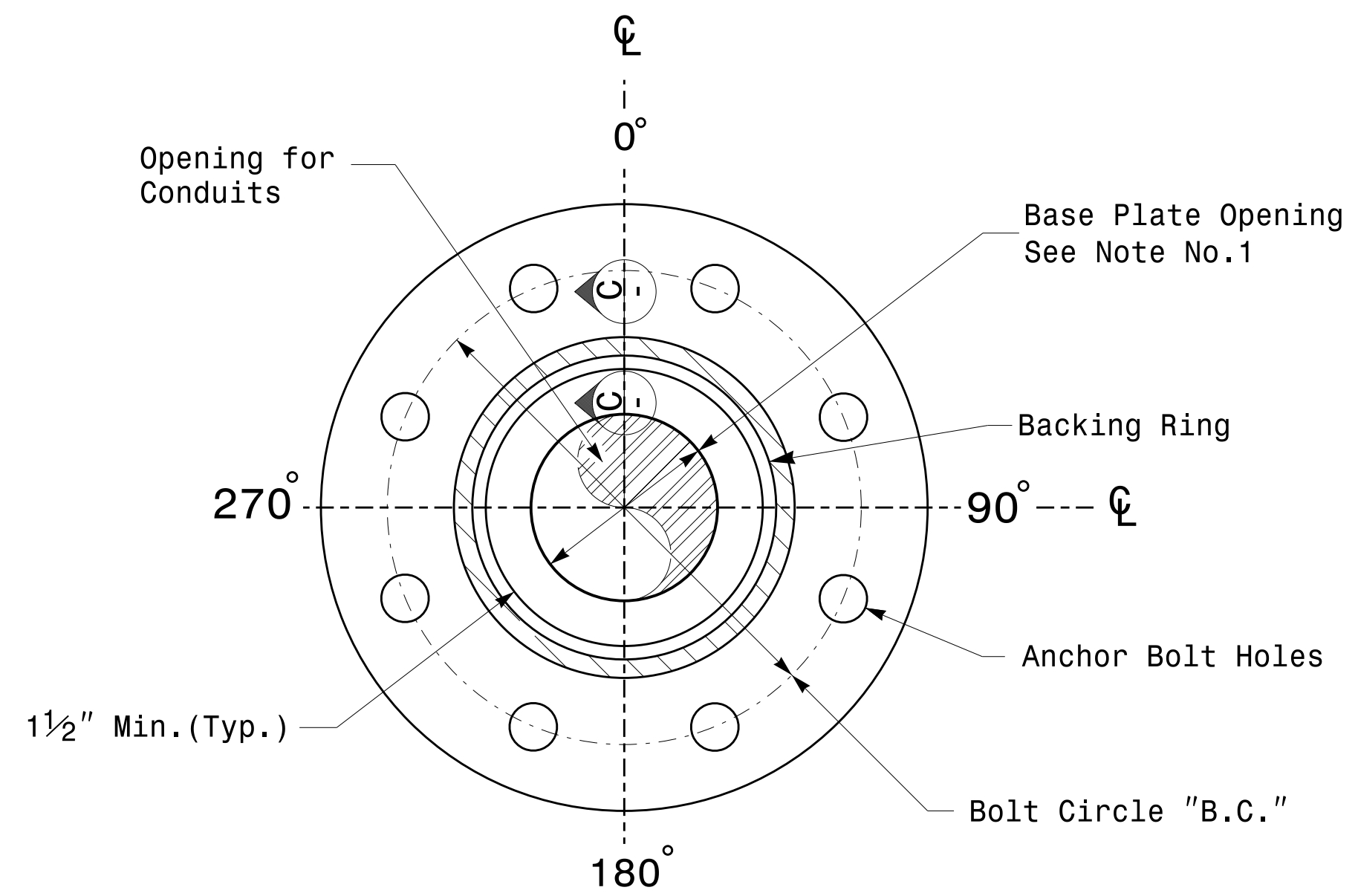


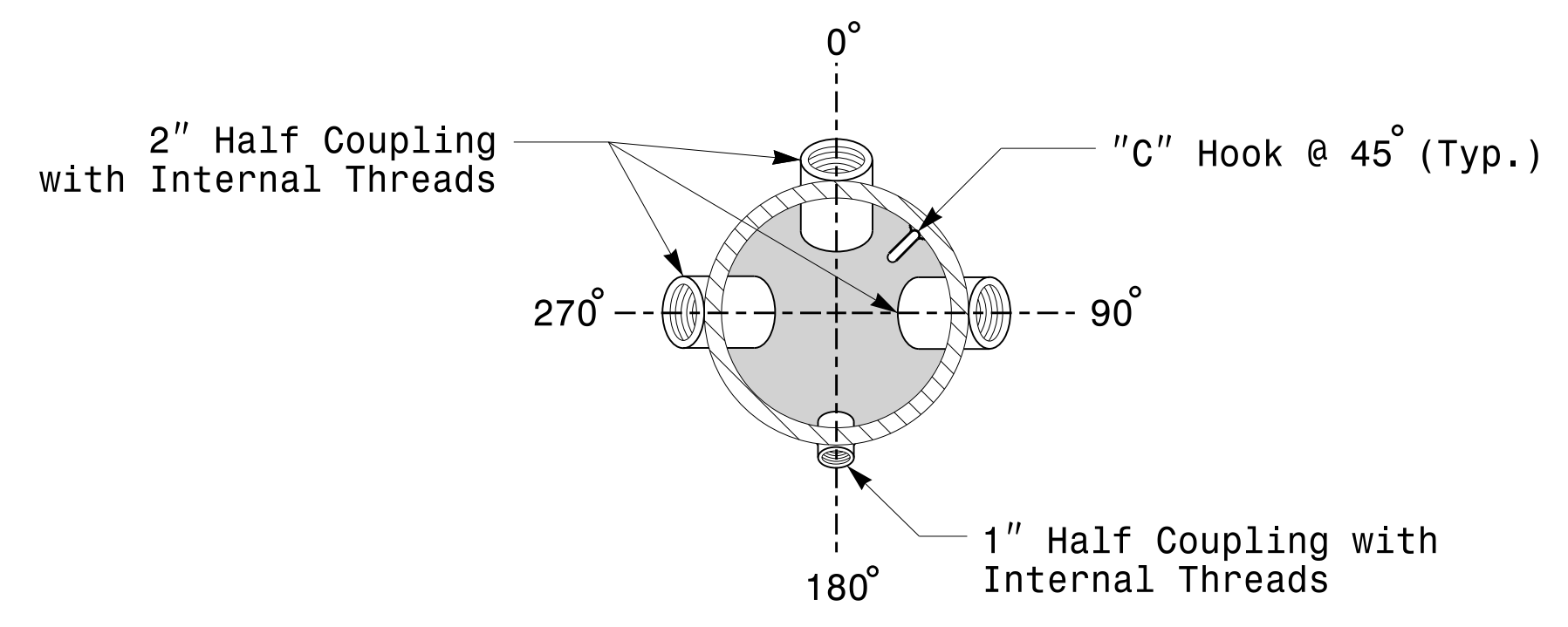
Note:  
 1. Opening in pole base plate shall be equal to pole base inside diameter minus 3 1/2" but shall not be less than 8 1/2".



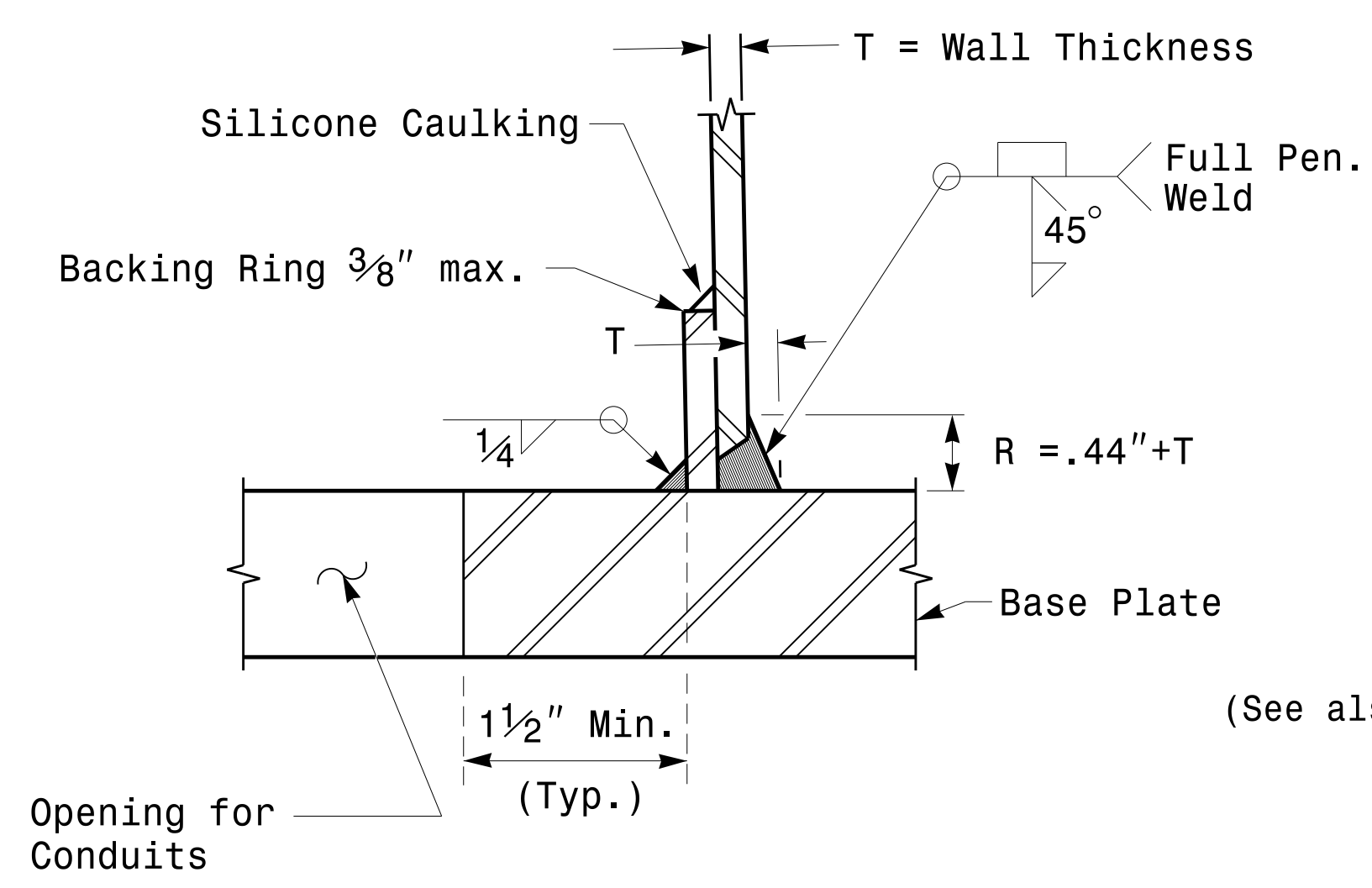
Cable Entrances at Top of Pole



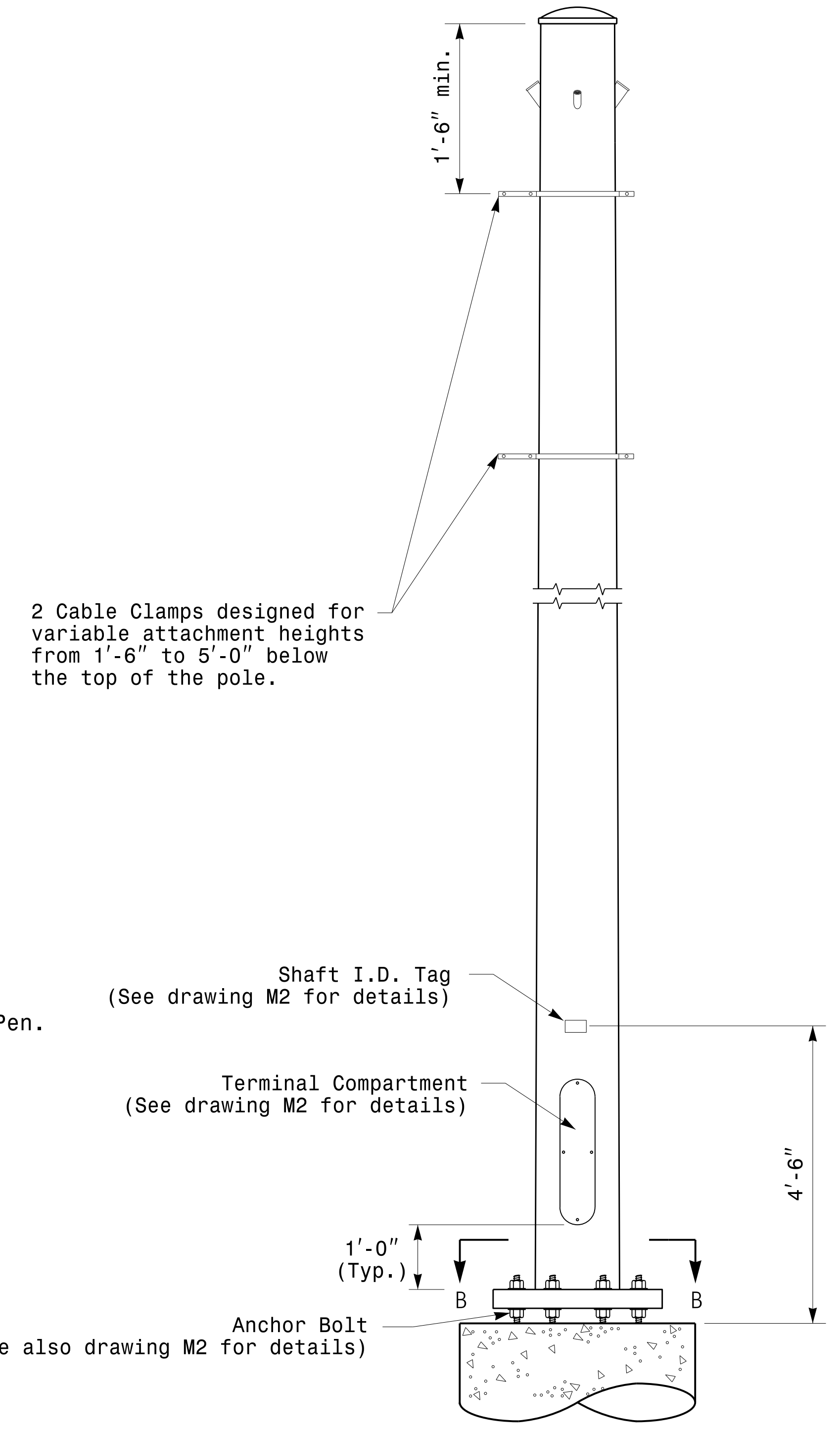
Section B-B  
Pole Base Plate Details  
(8 and 12 Bolt Pattern)



Section A-A  
Radial Orientation for Factory Installed  
Accessories at Top of Pole



Section C-C  
(Pole Attachment to Base Plate)  
Full-Penetration  
Groove Weld Detail



Monotube Strain Pole

17-FEB-2016 16:04  
 T:\SCD\115\Signal\sig\Design\Section\Eastern\_Region\M3\_Sheets\2016\2014\_Sig\_M3\_Shtd\_Fabrication\_Details-Strain\_Poles.dgn  
 3/21/2016

	<b>Typical Fabrication Details For Strain Poles</b>		
	PLAN DATE: FEBRUARY 2016 PREPARED BY: N. BITTING	DESIGNED BY: K.C. DURIGON REVIEWED BY: D.C. SARKAR	
SCALE: NONE	REVISIONS:	INIT. DATE:	DocuSigned by:  SIGNATURE: Debesh C. Sarkar DATE: 2/17/2016

**Fabrication Details – Strain Poles**