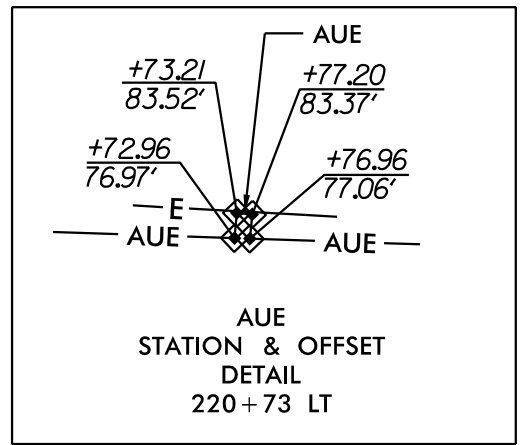
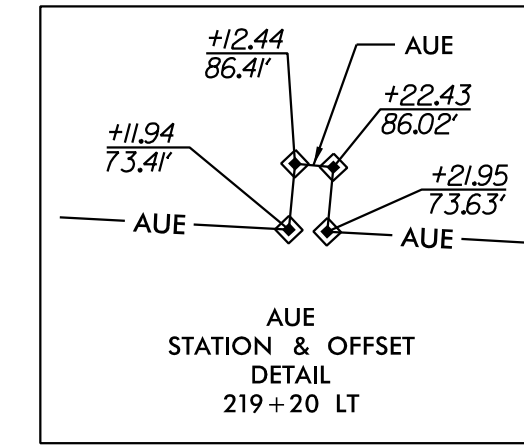
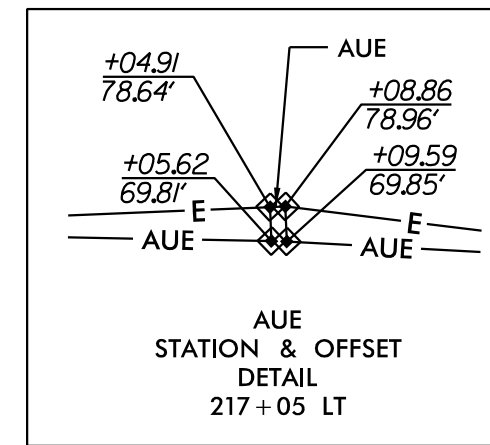
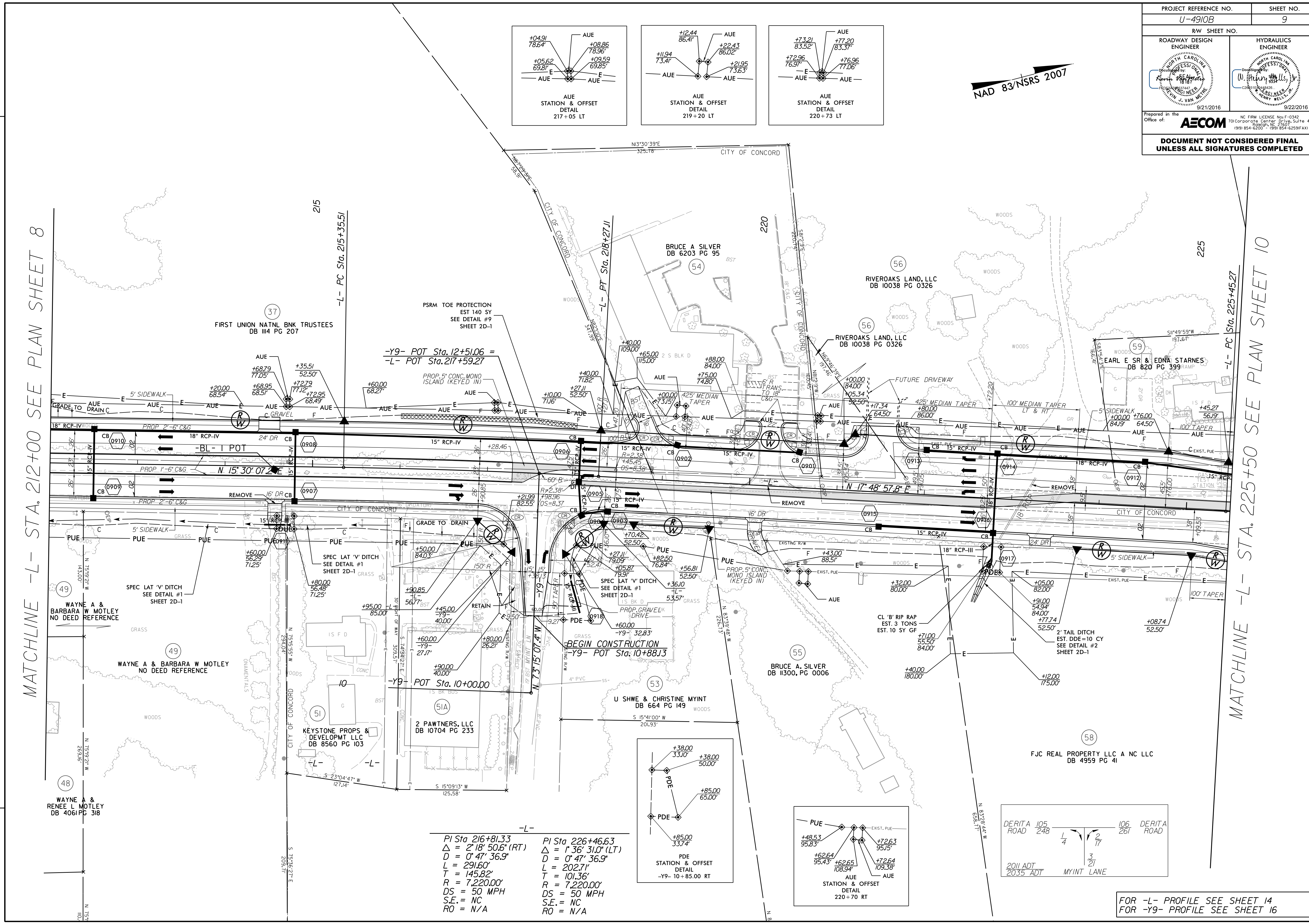


PROJECT REFERENCE NO. U-4910B		SHEET NO. 9	
RW SHEET NO.			
ROADWAY DESIGN ENGINEER		HYDRAULICS ENGINEER	
Prepared in the Office of:		NC FIRM LICENSE No. F-0342	
		701 Corporate Center Drive, Suite 415 Raleigh, NC 27607 (919) 854-6200 • (919) 854-6259(FAX)	
DOCUMENT NOT CONSIDERED FINAL UNLESS ALL SIGNATURES COMPLETED			

NAD 83/NSRS 2007

MATCHLINE -L- STA. 212+00 SEE PLAN SHEET 8

MATCHLINE -L- STA. 225+50 SEE PLAN SHEET 10

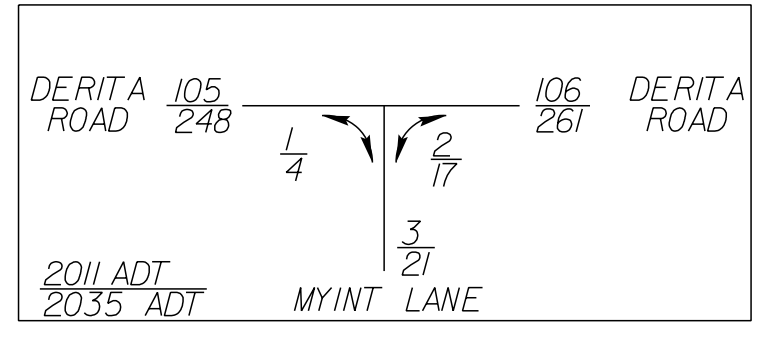
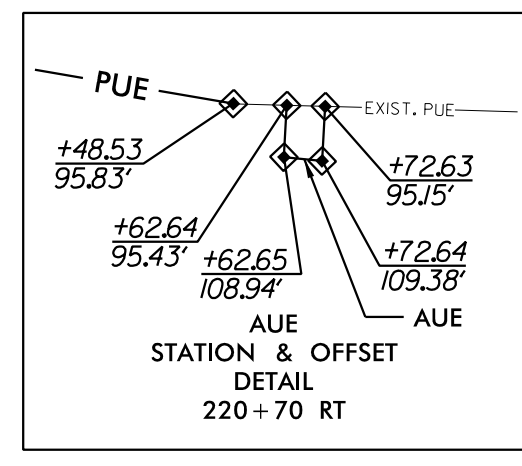
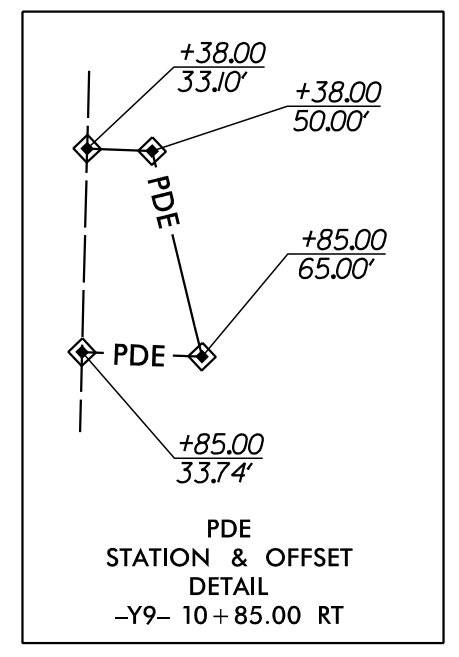


-Y9- POT Sta. 12+51.06 =
-L- POT Sta. 217+59.27

BEGIN CONSTRUCTION
-Y9- POT Sta. 10+88.13

-L-
 PI Sta 216+81.33
 $\Delta = 2' 18'' 50.6''$ (RT)
 $D = 0' 47'' 36.9''$
 $L = 291.60'$
 $T = 145.82'$
 $R = 7,220.00'$
 $DS = 50$ MPH
 $S.E. = NC$
 $RO = N/A$

PI Sta 226+46.63
 $\Delta = 1' 36'' 31.0''$ (LT)
 $D = 0' 47'' 36.9''$
 $L = 202.71'$
 $T = 101.36'$
 $R = 7,220.00'$
 $DS = 50$ MPH
 $S.E. = NC$
 $RO = N/A$



FOR -L- PROFILE SEE SHEET 14
FOR -Y9- PROFILE SEE SHEET 16

REVISIONS

Revisions:

Drawn: R:\Roadway\Proj\U4910B\RD\RD_20160929.dwg
 User: schmid
 Date: 9/19/2016
 Time: 2:47:40 PM