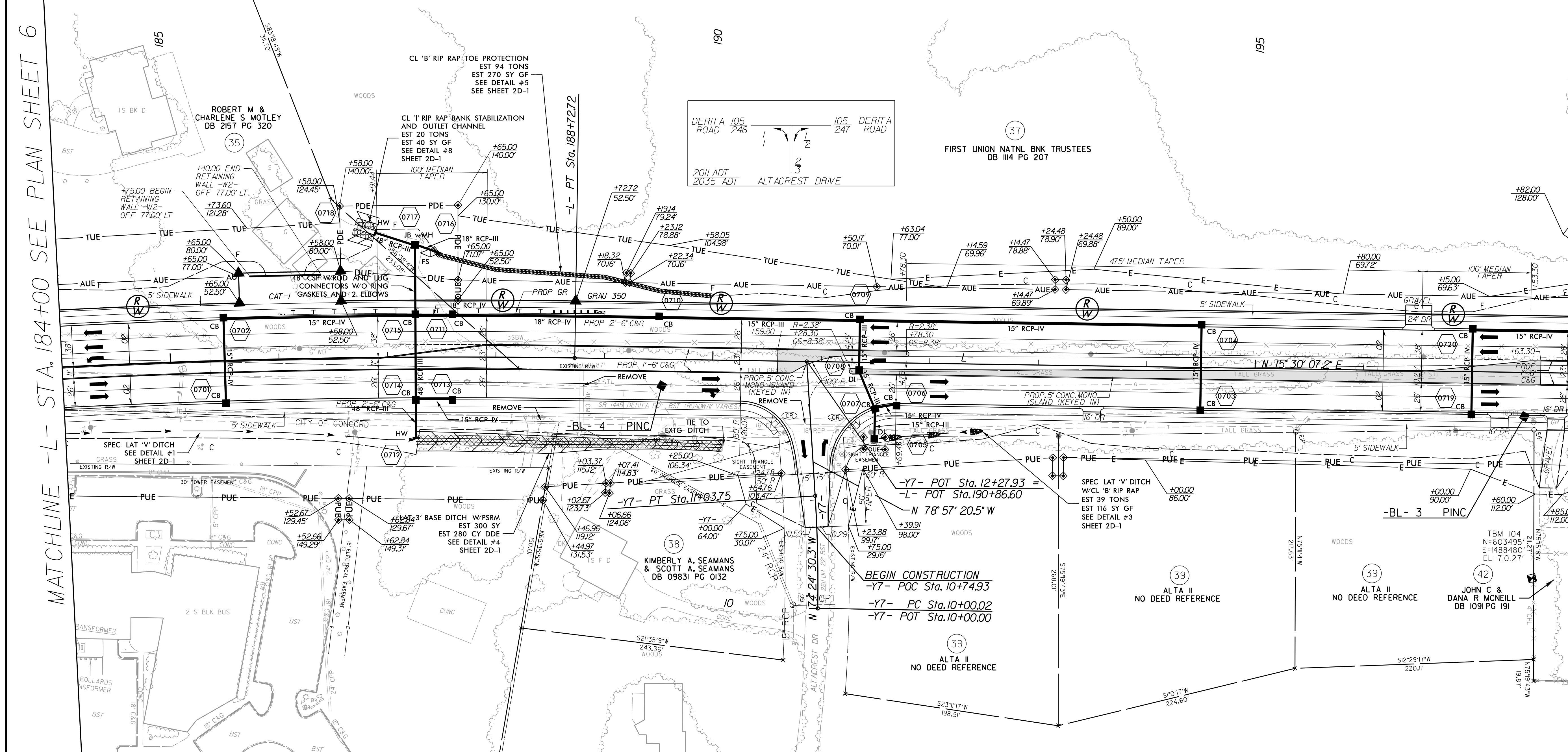


PROJECT REFERENCE NO. U-4910B	SHEET NO. 7
RW SHEET NO.	
ROADWAY DESIGN ENGINEER <i>Kevin J. Van Meirke</i> SEAL 18187 11/22/2016	HYDRAULICS ENGINEER <i>Harry Wells, Jr.</i> SEAL 9334 11/22/2016
Prepared in the Office of: AECOM NC FIRM LICENSE No. F-0342 701 Corporate Center Drive, Suite 475 Raleigh, NC 27607 (919) 854-6200 • (919) 854-6259(FAX)	
DOCUMENT NOT CONSIDERED FINAL UNLESS ALL SIGNATURES COMPLETED	

NAD 83/NSRS 2007

MATCHLINE -L- STA. 184+00 SEE PLAN SHEET 6

MATCHLINE -L- STA. 198+00 SEE PLAN SHEET 8



REVISIONS

Revisions:

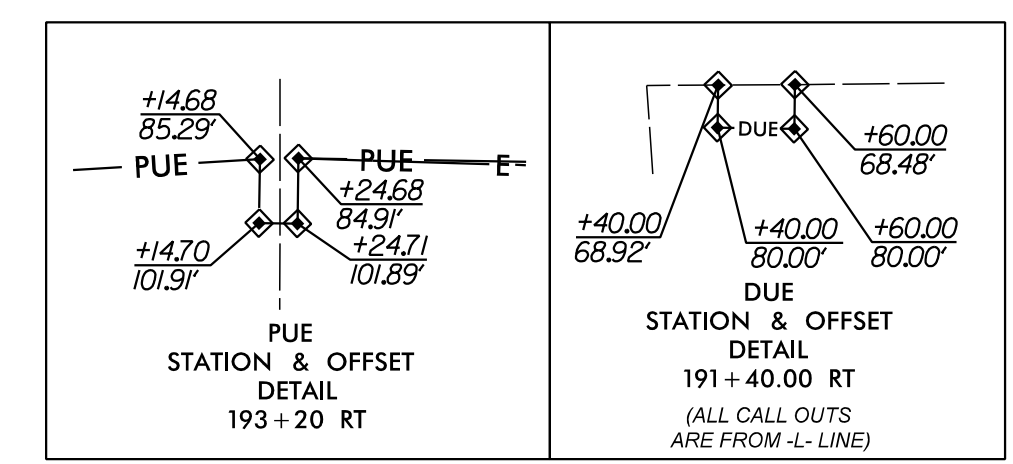
Drawn: R:\Roadway\Proj\4910B\U-4910B-07.dwg, 11/22/16
 User: schmid
 Date: 11/21/2016
 Time: 3:42:59 PM

36
 2 ONE 2 OF CONCORD LLC,
 A NORTH CAROLINA LIMITED
 LIABILITY COMPANY
 DB 11572 PG 240

SEE W SERIES SHEETS FOR RETAINING WALL DETAILS

-L-
 PI Sta 186+18.82
 $\Delta = 4' 01" 53.0" (RT)$
 $D = 0' 47" 36.9"$
 $L = 508.01'$
 $T = 254.11'$
 $R = 7,220.00'$
 $DS = 50 MPH$
 $S.E. = NC$
 $RO = N/A$

-Y7-
 PI Sta 10+51.91
 $\Delta = 4' 32" 50.2" (LT)$
 $D = 4' 23" 01.5"$
 $L = 103.73'$
 $T = 51.89'$
 $R = 1,307.00'$
 $DS = 40 MPH$
 $S.E. = NC$
 $RO = N/A$



FOR -L- PROFILE SEE SHEET 13
FOR -Y7- PROFILE SEE SHEET 15