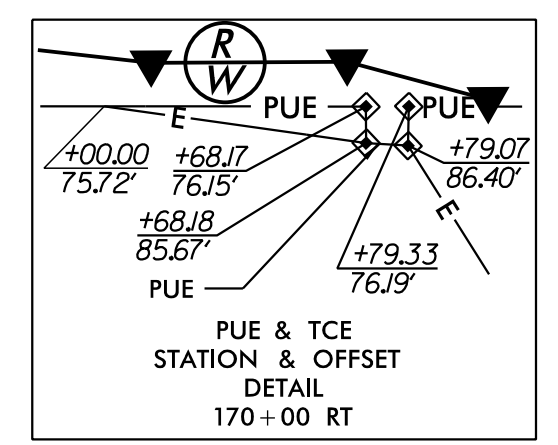
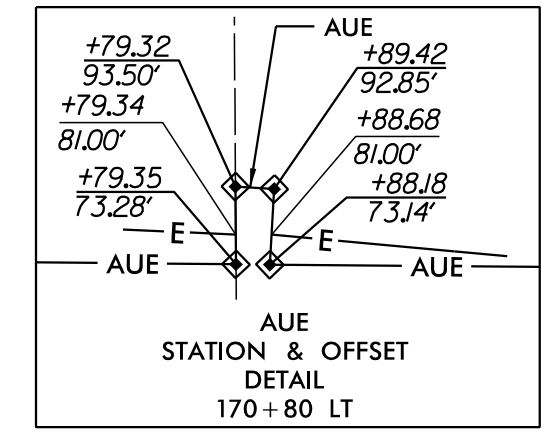
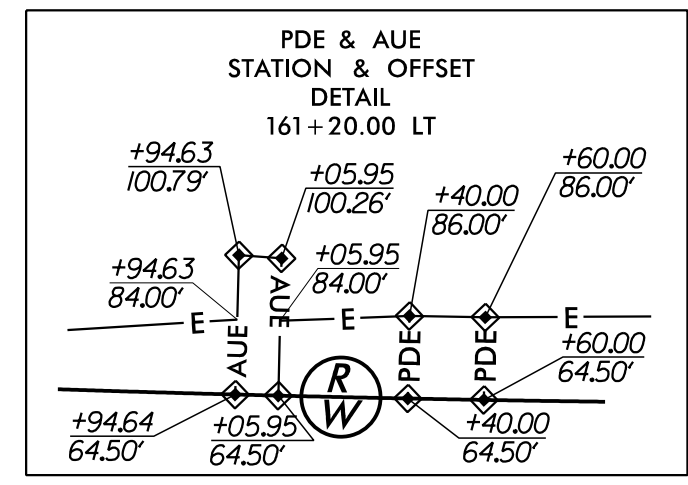
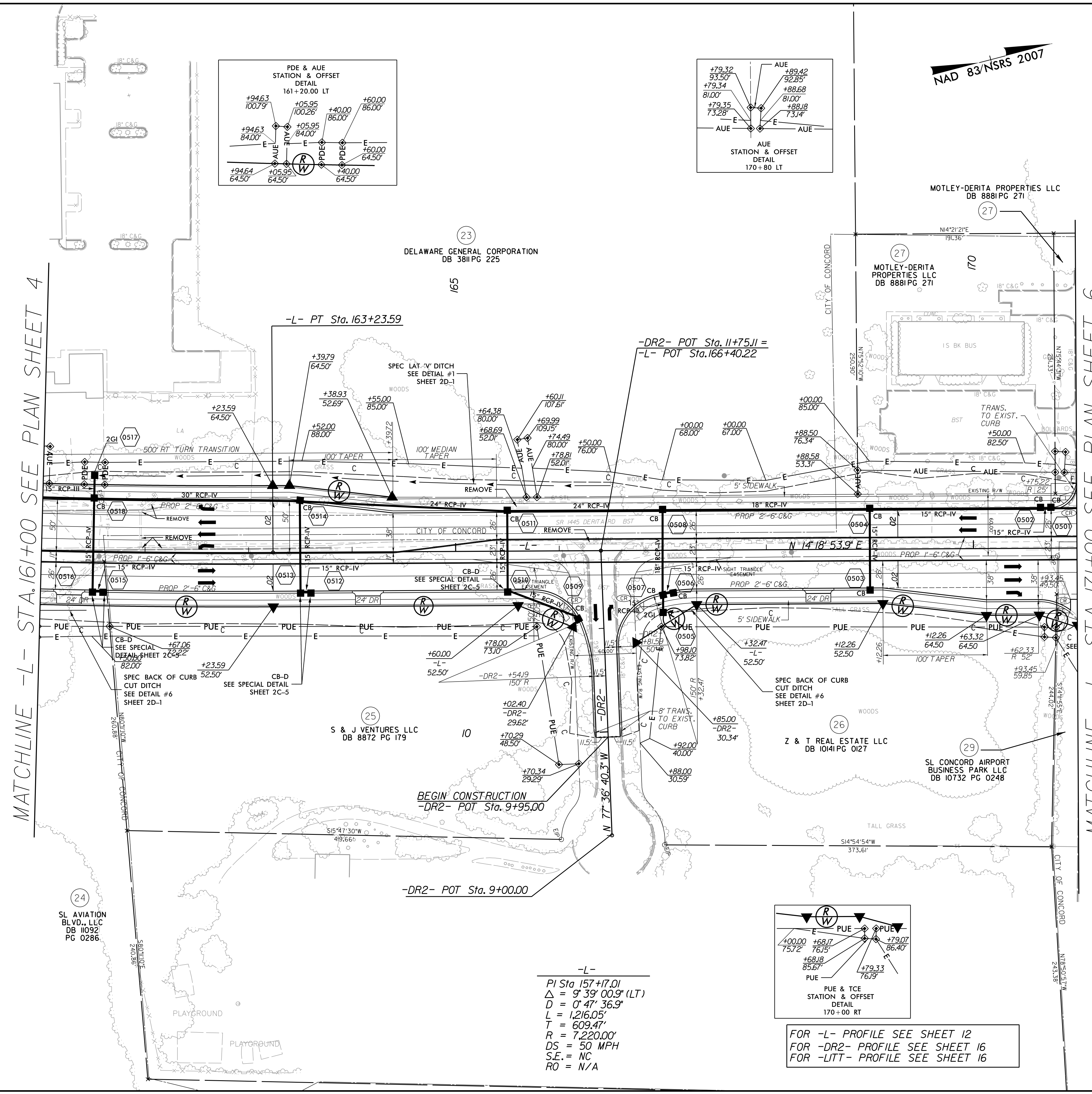


PROJECT REFERENCE NO. <b>U-4910B</b>	SHEET NO. <b>5</b>
RW SHEET NO.	
ROADWAY DESIGN ENGINEER <i>Kevin S. ...</i>	HYDRAULICS ENGINEER <i>...</i>
11/22/2016	11/22/2016
Prepared in the Office of: <b>AECOM</b>	
<small>NC FIRM LICENSE No. F-0342 701 Corporate Center Drive, Suite 475 Raleigh, NC 27607 (919) 854-6200 • (919) 854-6259(FAX)</small>	
<b>DOCUMENT NOT CONSIDERED FINAL UNLESS ALL SIGNATURES COMPLETED</b>	

NAD 83/NSRS 2007

MATCHLINE -L- STA. 161+00 SEE PLAN SHEET 4

MATCHLINE -L- STA. 171+00 SEE PLAN SHEET 6



-L-  
 PI Sta 157+17.01  
 $\Delta = 9' 39'' 00.9''$  (LT)  
 $D = 0' 47'' 36.9''$   
 $L = 1,216.05'$   
 $T = 609.47'$   
 $R = 7,220.00'$   
 $DS = 50$  MPH  
 S.E. = NC  
 RO = N/A

FOR -L- PROFILE SEE SHEET 12  
 FOR -DR2- PROFILE SEE SHEET 16  
 FOR -LITT- PROFILE SEE SHEET 16

REVISIONS

Revisions:

Drawn: R:\Roadway\Proj\U4910B\Draw\plan\plan01.dwg  
 User: schmid  
 Date: 11/21/2016  
 Time: 3:42:04 PM