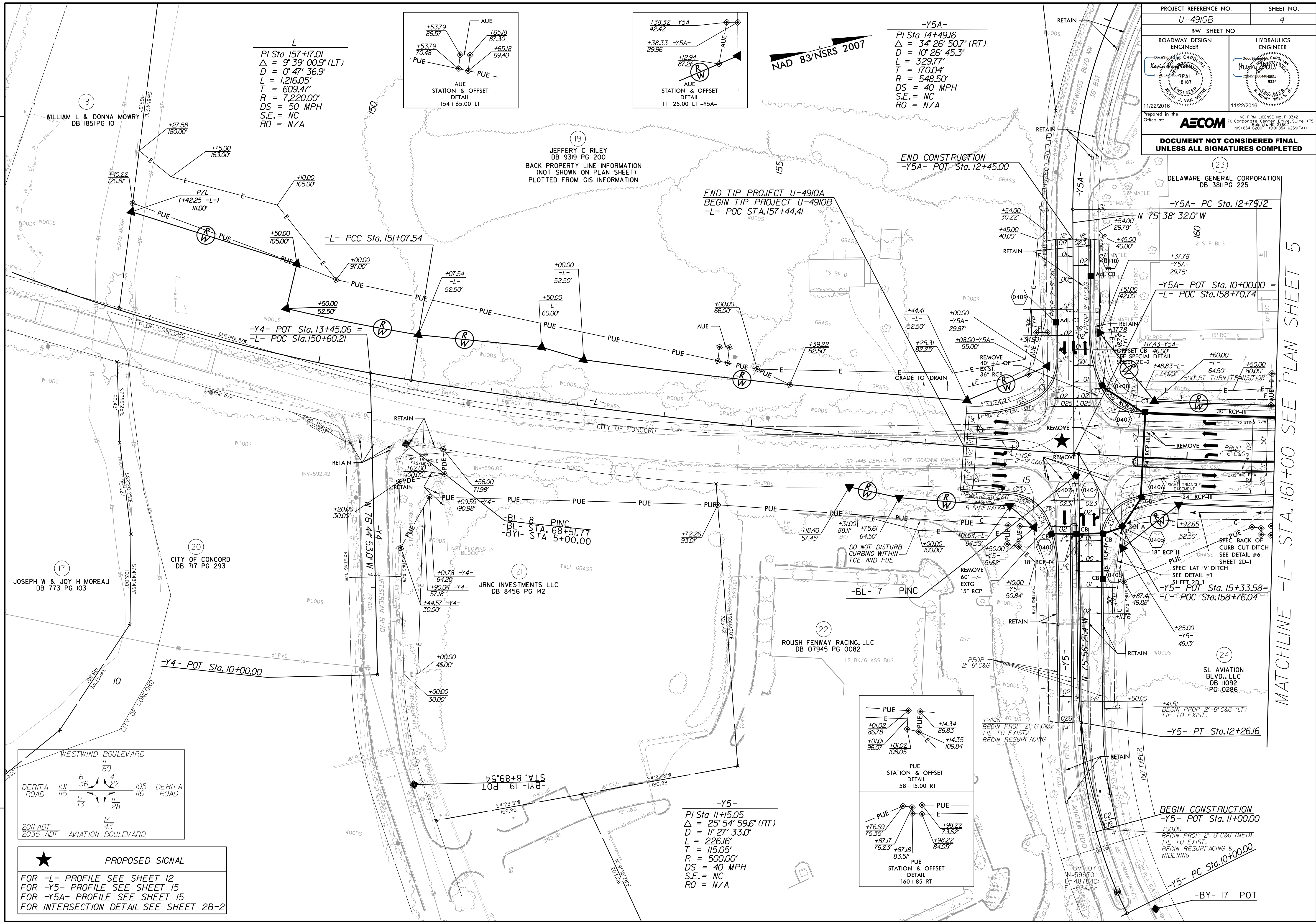
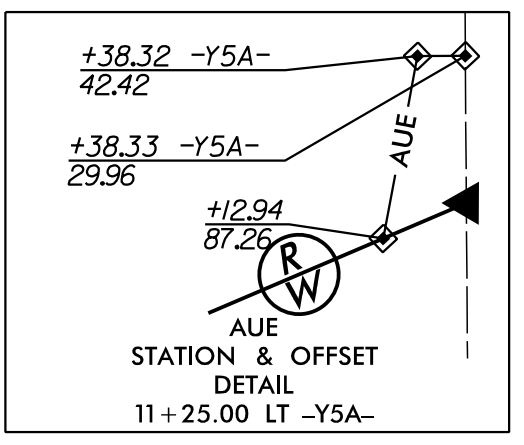
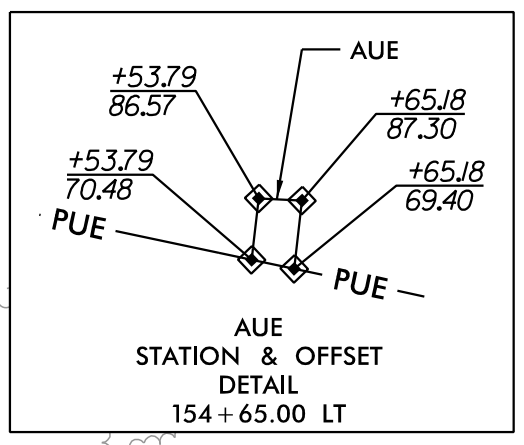


PROJECT REFERENCE NO. <b>U-4910B</b>	SHEET NO. <b>4</b>
RW SHEET NO.	HYDRAULICS ENGINEER
ROADWAY DESIGN ENGINEER	SEAL
11/22/2016	11/22/2016
<p>Prepared in the Office of:</p> <p><b>AECOM</b></p> <p>NC FIRM LICENSE No. F-0342 701 Corporate Center Drive, Suite 475 Raleigh, NC 27607 (919) 854-6200 • (919) 854-6259(FAX)</p>	
<p><b>DOCUMENT NOT CONSIDERED FINAL UNLESS ALL SIGNATURES COMPLETED</b></p>	



-L-  
 PI Sta 157+17.01  
 $\Delta = 9' 39'' 00.9''$  (LT)  
 $D = 0' 47'' 36.9''$   
 $L = 1216.05'$   
 $T = 609.47'$   
 $R = 7,220.00'$   
 $DS = 50$  MPH  
 $S.E. = NC$   
 $RO = N/A$



NAD 83/NSRS 2007

-Y5A-  
 PI Sta 14+49.16  
 $\Delta = 34' 26'' 50.7''$  (RT)  
 $D = 10' 26'' 45.3''$   
 $L = 329.77'$   
 $T = 170.04'$   
 $R = 548.50'$   
 $DS = 40$  MPH  
 $S.E. = NC$   
 $RO = N/A$

END CONSTRUCTION  
 -Y5A- POT Sta. 12+45.00

END TIP PROJECT U-4910A  
 BEGIN TIP PROJECT U-4910B  
 -L- POC STA. 157+44.41

DELAWARE GENERAL CORPORATION  
 DB 381 PG 225

-Y5A- PC Sta. 12+79.12

N 75° 38' 32.0" W

-Y5A- POT Sta. 10+00.00 =

-L- POC Sta. 158+70.74

+60.00

+50.00

+50.00

+50.00

+50.00

+50.00

+50.00

+50.00

+50.00

+50.00

+50.00

+50.00

+50.00

+50.00

+50.00

+50.00

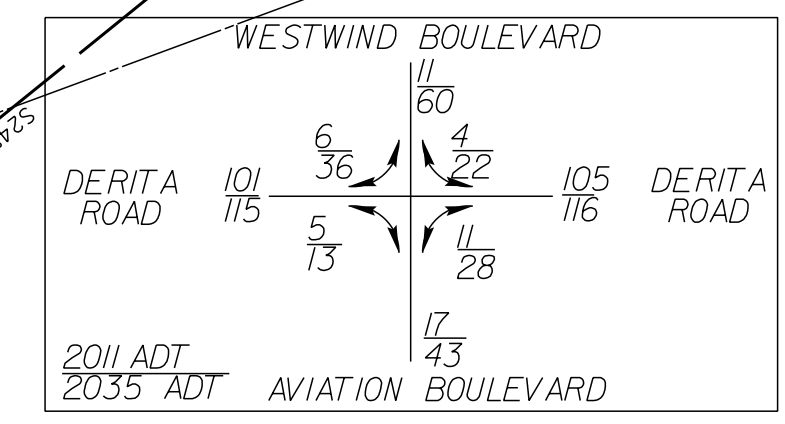
+50.00

+50.00

+50.00

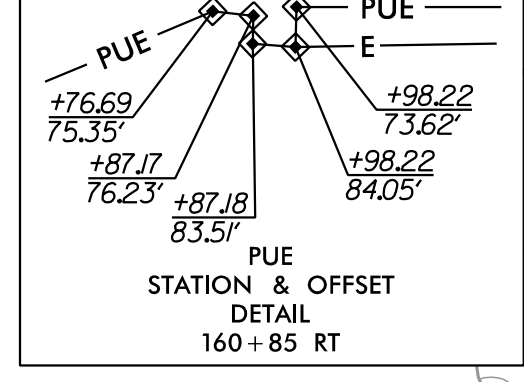
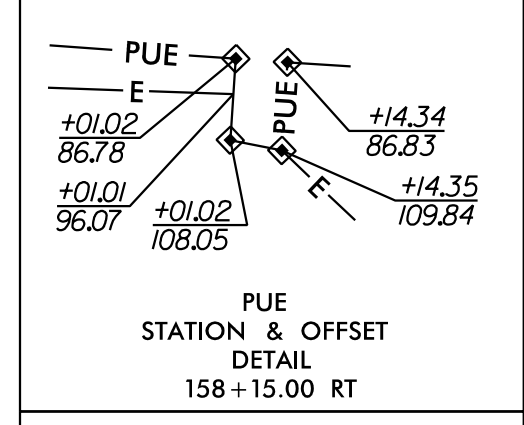
+50.00

+50.00



★ PROPOSED SIGNAL

FOR -L- PROFILE SEE SHEET 12  
 FOR -Y5- PROFILE SEE SHEET 15  
 FOR -Y5A- PROFILE SEE SHEET 15  
 FOR INTERSECTION DETAIL SEE SHEET 2B-2



-Y5-  
 PI Sta 11+15.05  
 $\Delta = 25' 54'' 59.6''$  (RT)  
 $D = 11' 27'' 33.0''$   
 $L = 226.16'$   
 $T = 115.05'$   
 $R = 500.00'$   
 $DS = 40$  MPH  
 $S.E. = NC$   
 $RO = N/A$

BEGIN CONSTRUCTION  
 -Y5- POT Sta. 11+00.00

-Y5- PC Sta. 10+00.00

MATCHLINE -L- STA. 161+00 SEE PLAN SHEET 5

Revisions:  
 2011 ADT  
 2035 ADT