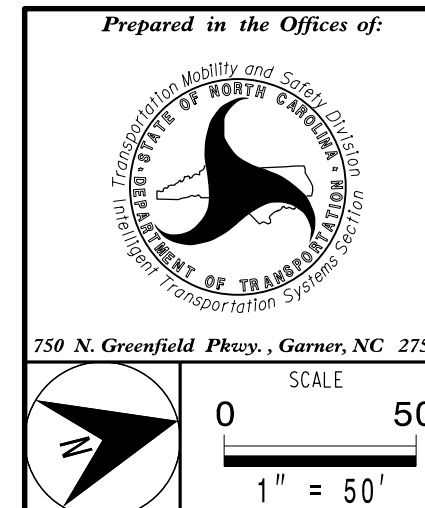


CABINET, SPLICE ENCLOSURE AND CABLE INSTALLED UNDER U-4910B. SHOWN FOR INFORMATION PURPOSE ONLY. SEE U-4910B FOR CABLE INSTALLATION DETAILS.

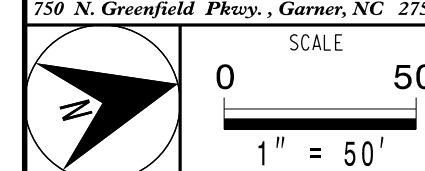
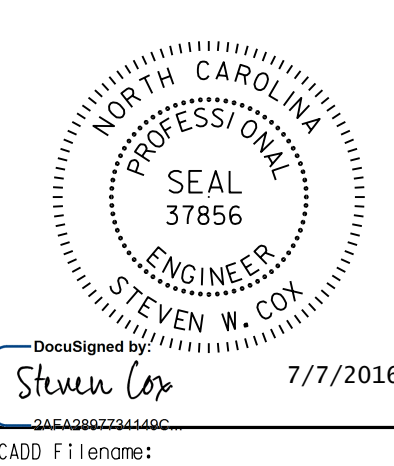
**NOTES:**

1. ALL NCDOT CABLE ATTACHMENT POINTS ARE 40" BELOW POWER, FRONT SIDE OF POLE, UNLESS OTHERWISE NOTED.
2. COORDINATE WITH THE U-4910B PROJECT SO THAT UNUSED FIBERS ARE EXPRESSED THROUGH THE AERIAL SPLICE ENCLOSURE AT 10-2168.

DOCUMENT NOT CONSIDERED FINAL UNLESS ALL SIGNATURES COMPLETED



<b>COMMUNICATIONS CABLE AND CONDUIT ROUTING PLANS</b>	
Division 10 Cabarrus County	Concord
PLAN DATE: June 2016	REVIEWED BY: C.L. Kalencik
PREPARED BY: S.W. Cox	REVIEWED BY:
REVISIONS	INIT. DATE



CADD Filename: