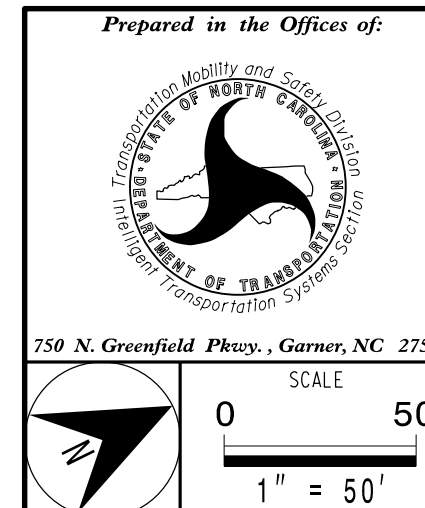
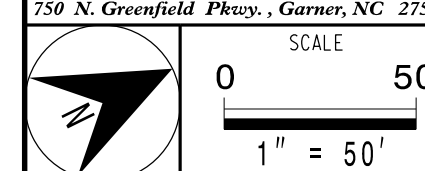
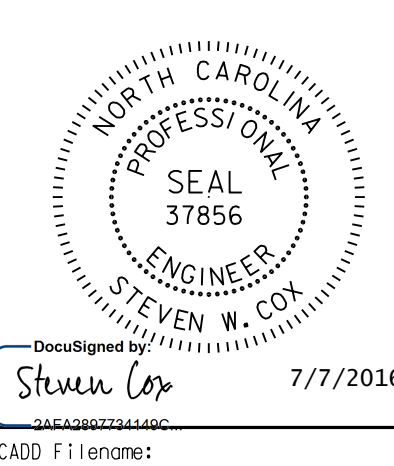


- NOTES:**
1. ALL NCDOT CABLE ATTACHMENT POINTS ARE 40" BELOW POWER, FRONT SIDE OF POLE, UNLESS OTHERWISE NOTED.
 2. COIL THE DROP CABLE IN THE EXISTING CABINET.
 3. PROVIDE THE FIBER INTERCONNECT CENTER TO THE CITY OF CONCORD FOR INSTALLATION.

DOCUMENT NOT CONSIDERED FINAL UNLESS ALL SIGNATURES COMPLETED



COMMUNICATIONS CABLE AND CONDUIT ROUTING PLANS	
Division 10 Cabarrus County	Concord
PLAN DATE: June 2016	REVIEWED BY: C.L. Kalencik
PREPARED BY: S.W. COX	REVIEWED BY:
REVISIONS	INIT. DATE



CADD Filename: