

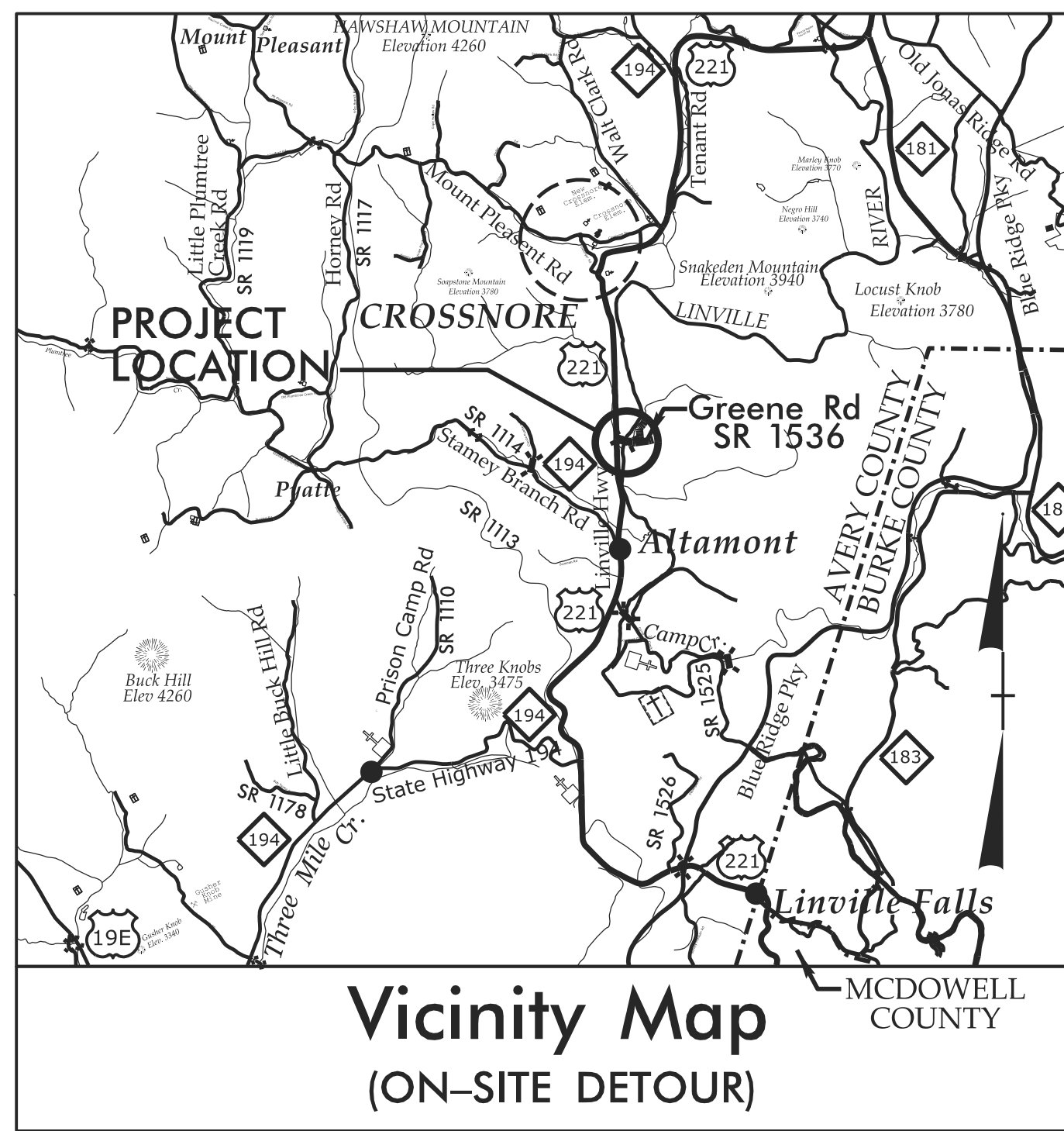
**This electronic collection of documents is provided
for the convenience of the user
and is Not a Certified Document –**

**The documents contained herein were originally issued
and sealed by the individuals whose names and license
numbers appear on each page, on the dates appearing
with their signature on that page.**

**This file or an individual page
shall not be considered a certified document.**

09/08/99

TIP PROJECT: B-5383



STATE OF NORTH CAROLINA
DIVISION OF HIGHWAYS

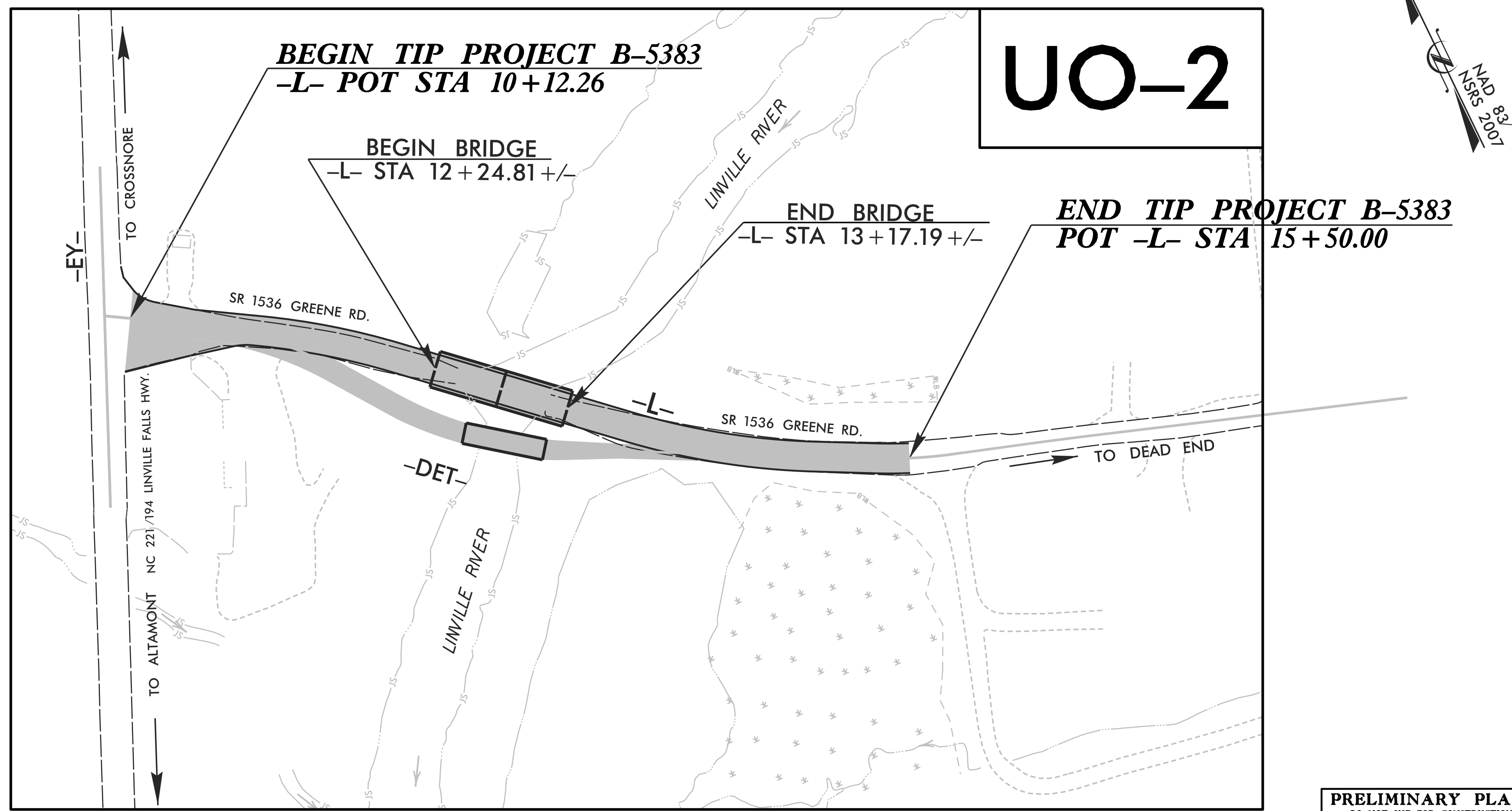
UTILITIES BY OTHERS PLANS
AVERY COUNTY

**LOCATION: BRIDGE NO. 143 OVER LINVILLE RIVER ON
SR 1536 (GREENE ROAD)**

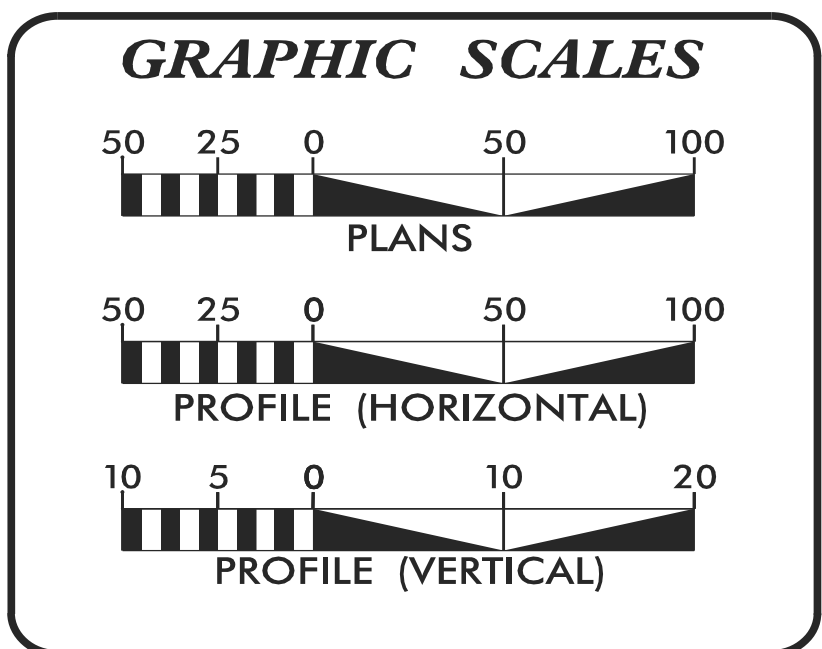
TYPE OF WORK: OVERHEAD POWER & TELECOMMUNICATIONS RELOCATIONS

T.I.P. NO.	SHEET NO.
B-5383	UO-1

NOTE:
ALL UTILITY WORK SHOWN ON THIS SHEET IS DONE BY OTHERS.
NO PAYMENT WILL BE MADE TO THE CONTRACTOR FOR UTILITY WORK SHOWN ON THIS SHEET.



PRELIMINARY PLANS
DO NOT USE FOR CONSTRUCTION



INDEX OF SHEETS	
SHEET NO.:	DESCRIPTION:
UO-1	TITLE SHEET
UO-2	UBO PLAN SHEETS

UTILITY OWNERS WITH CONFLICTS	
(A) POWER (DISTRIBUTION) - MOUNTAIN ELECTRIC	
(B) COMMUNICATIONS - AT&T	

PREPARED IN THE OFFICE OF:

KCI ASSOCIATES OF N.C.
CIVIL ENGINEERS
ENVIRONMENTAL - CEI
LAND SURVEYING
SUBSURFACE UTILITY ENGINEERING
SUITE 220, LANDMARK CENTER II
401 SIX FORKS ROAD
RALEIGH, NORTH CAROLINA 27609
(919) 783-2114
WWW.KCI.COM

JOHN FAISON	UTILITY PROJECT MANAGER
JOHN FAISON	PROJECT UTILITY COORDINATOR
JOSH BARBOUR	PROJECT UTILITY DESIGNER

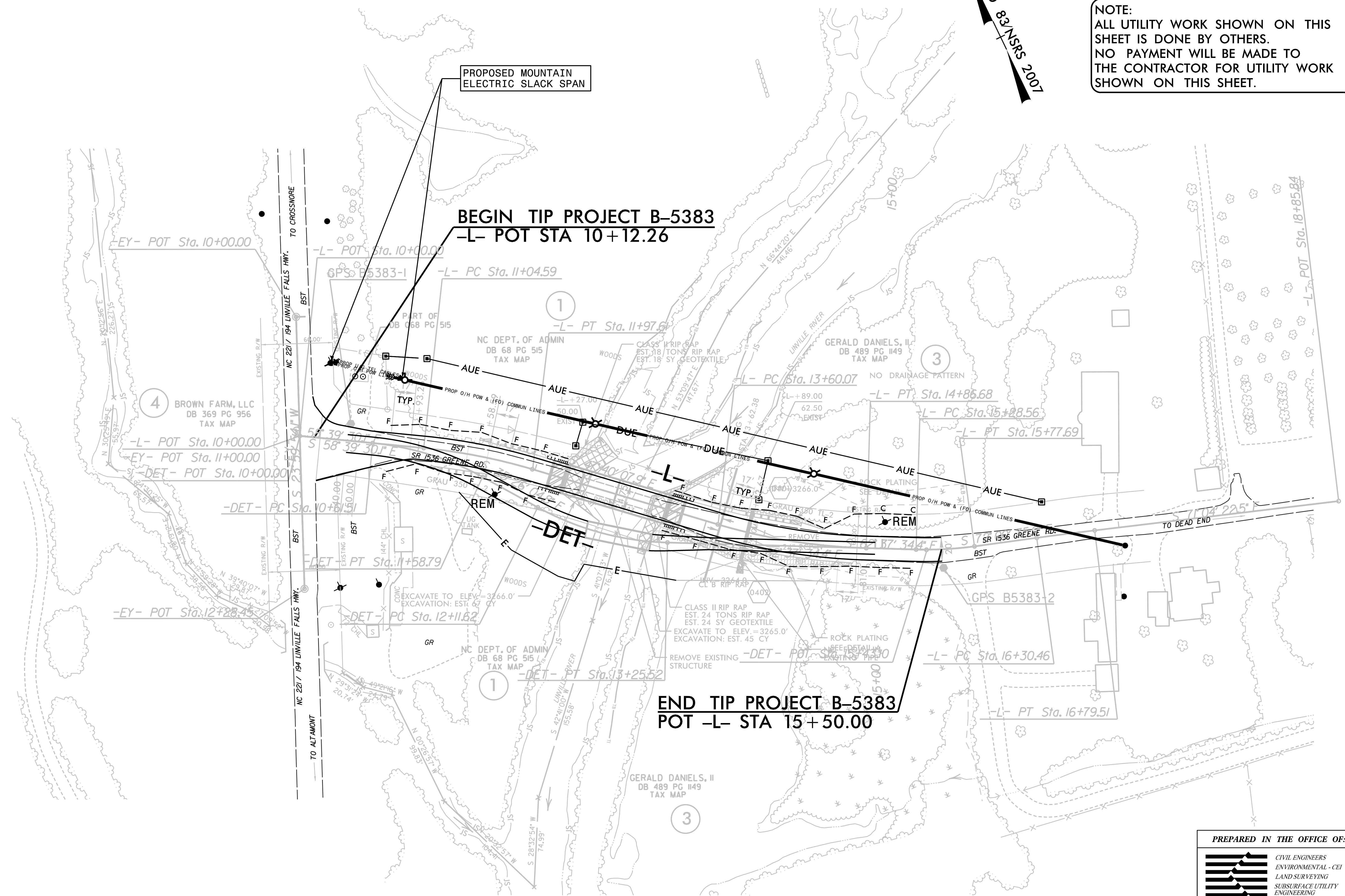
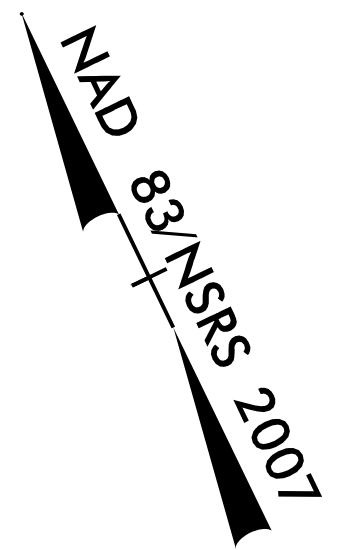
**DIVISION OF HIGHWAYS
UTILITIES UNIT**
1555 MAIL SERVICES CENTER
RALEIGH, NC 27699-1555
PHONE (919) 707-6690
FAX (919) 250-4151

CARL BARCLAY, P.E.	UTILITIES REGIONAL ENGINEER
JAMES SWINSON	UTILITIES ENGINEER
AMY DUPREE	UTILITIES AREA COORDINATOR
GREG SEALY	UTILITIES COORDINATOR

8:20:13 AM
290_00_BB5383_ut_tsh_u00_psh.dgn
Joshua Barbour - Division: P007 - Utility Services Emp

UTILITIES BY OTHERS

NOTE:
ALL UTILITY WORK SHOWN ON THIS SHEET IS DONE BY OTHERS.
NO PAYMENT WILL BE MADE TO THE CONTRACTOR FOR UTILITY WORK SHOWN ON THIS SHEET.



PROPOSED MOUNTAIN ELECTRIC SLACK SPAN

BEGIN TIP PROJECT B-5383
-L- POT STA 10+12.26

END TIP PROJECT B-5383
POT -L- STA 15+50.00

PREPARED IN THE OFFICE OF:

KCI
ASSOCIATES OF N.C.

CIVIL ENGINEERS
ENVIRONMENTAL - CEI
LAND SURVEYING
SUBSURFACE UTILITY ENGINEERING

SUITE 220, LANDMARK CENTER II,
4601 SIX FORKS ROAD
RALEIGH, NORTH CAROLINA 27609
(919) 783-9214
WWW.KCI.COM

5/14/99
 7:00:13 AM
 290_1002_B-5383_ut_rdy4_U002_esh.dgn
 D:\work\2002\B-5383\util\resources\esh.dgn