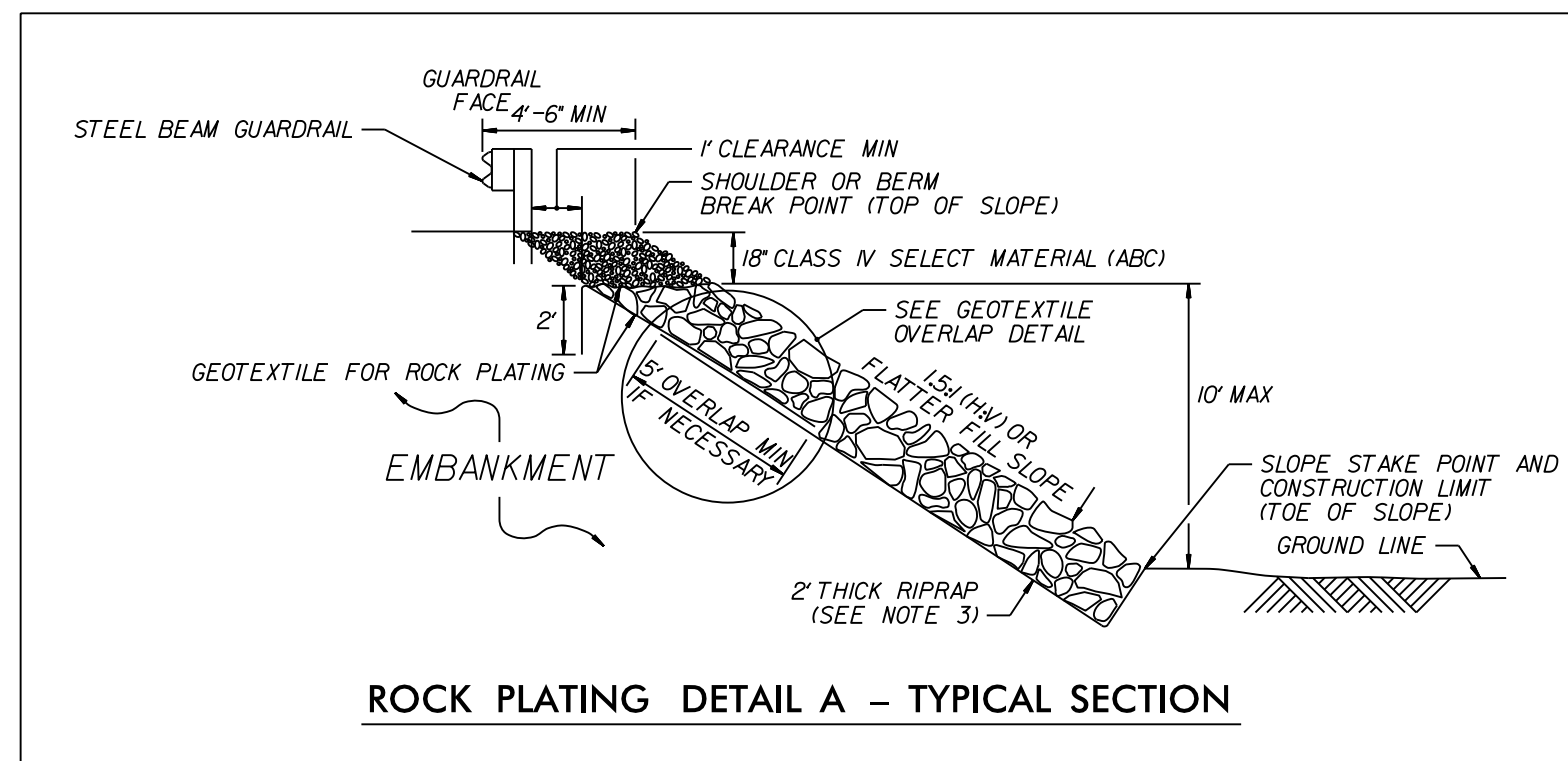
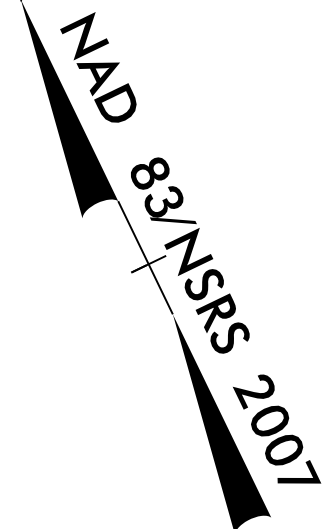
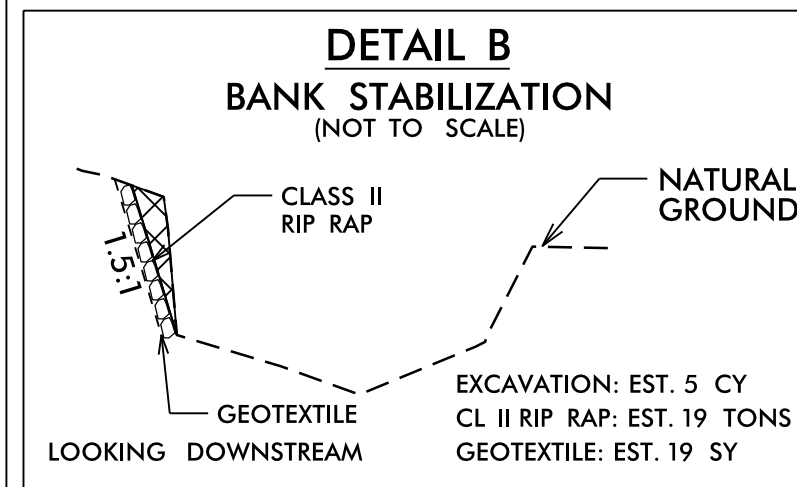


NOTE:
UTILIZE SPECIAL STILLING BASIN AS APPLICABLE.

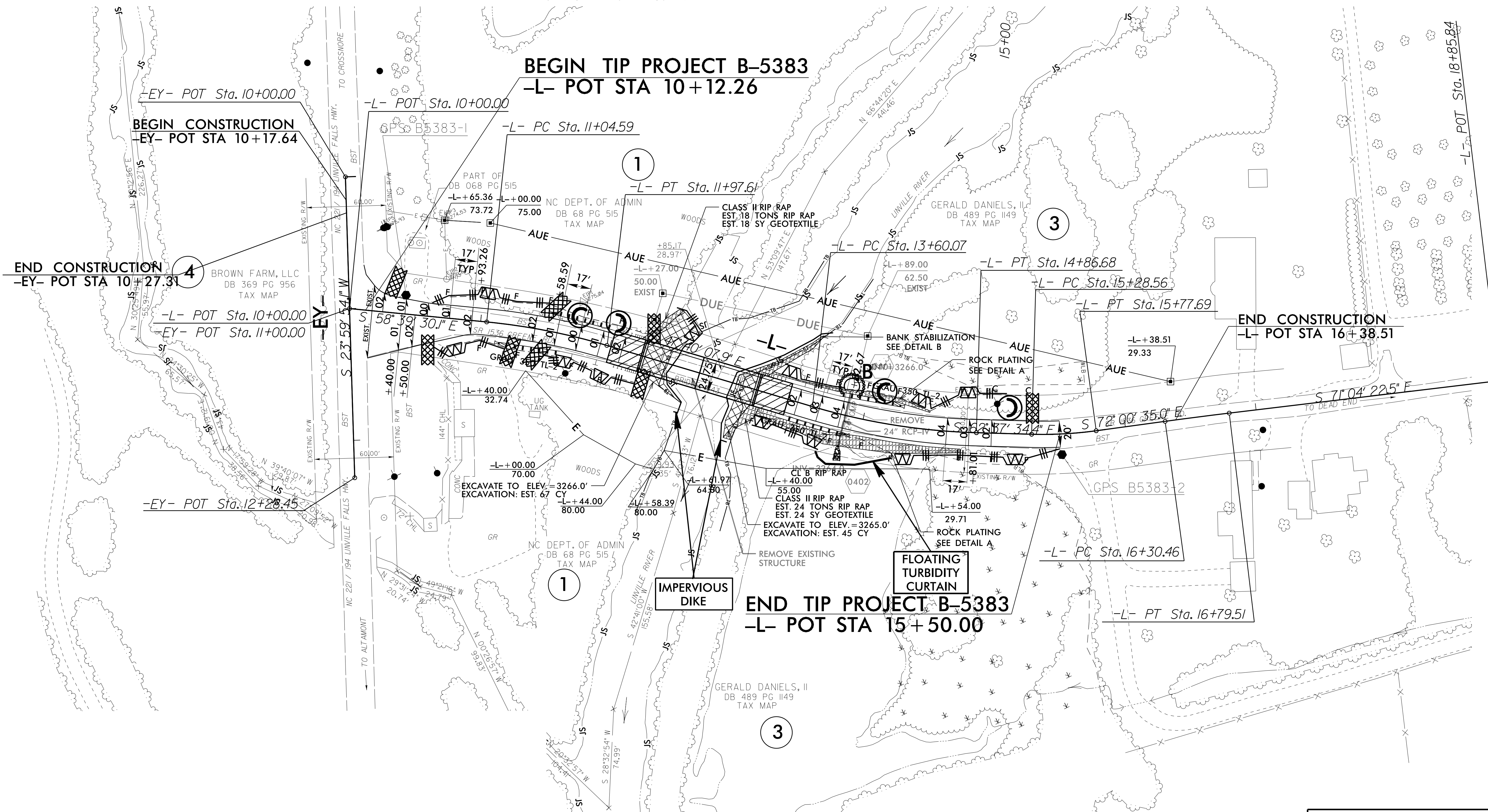


-L- STA. 13+20 TO 14+75 RT.
-L- STA. 13+22 TO 14+50 LT.

- NOTES:
1. SEE ROADWAY PLANS AND SUMMARY SHEETS FOR ROCK PLATING LOCATIONS.
 2. FOR STANDARD ROCK PLATING, SEE SECTION 275 OF THE STANDARD SPECIFICATIONS.
 3. USE CLASS I, 2 OR B RIPRAP UNLESS REQUIRED OTHERWISE IN THE ROADWAY SUMMARY SHEETS.



PROJECT REFERENCE NO. B-5383	SHEET NO. EC-6/CONST.4
RW SHEET NO.	
ROADWAY DESIGN ENGINEER	HYDRAULICS ENGINEER



Place Matting for Erosion Control on Slopes Adjacent to Permitted Wetlands as Work Allows.