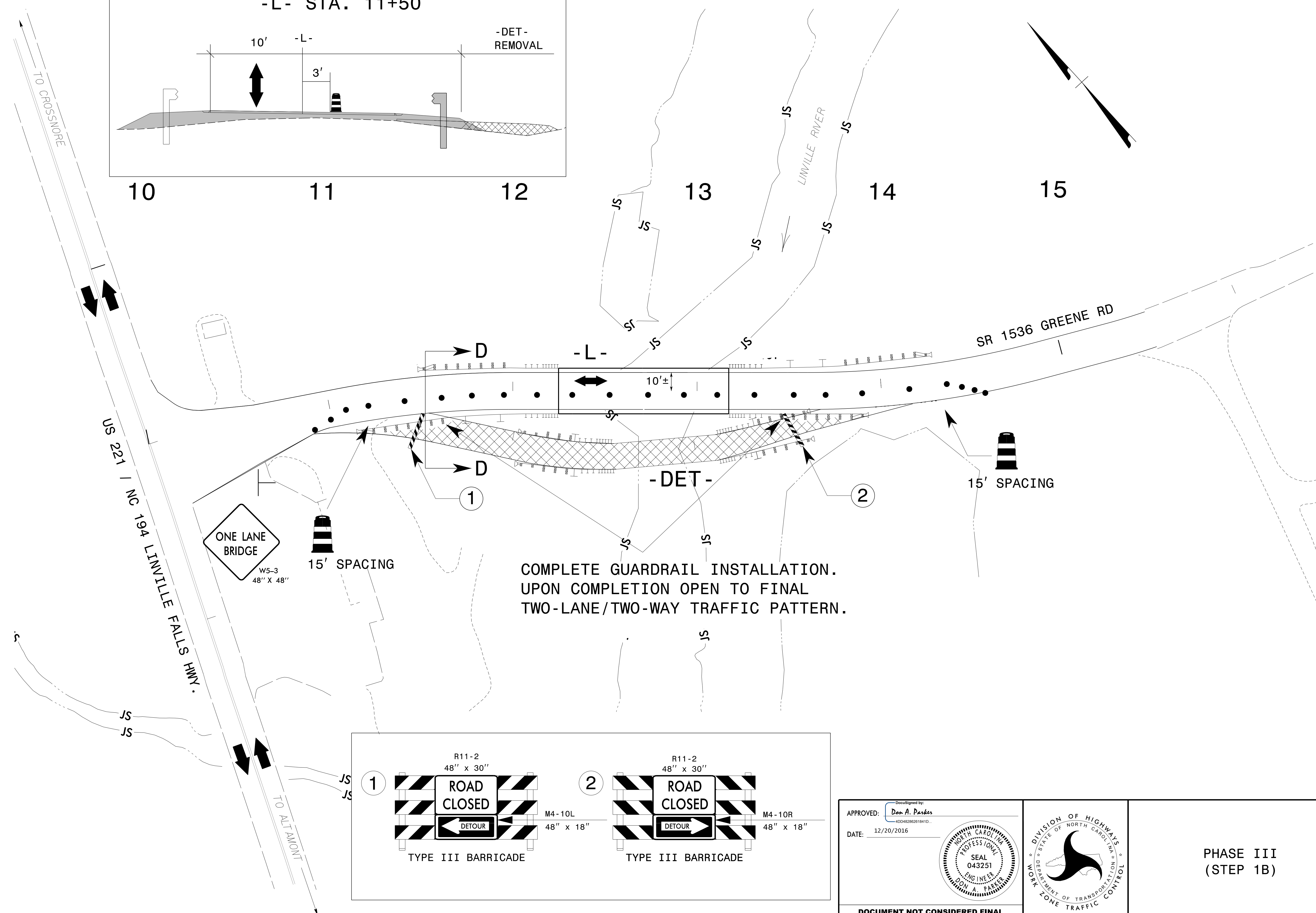
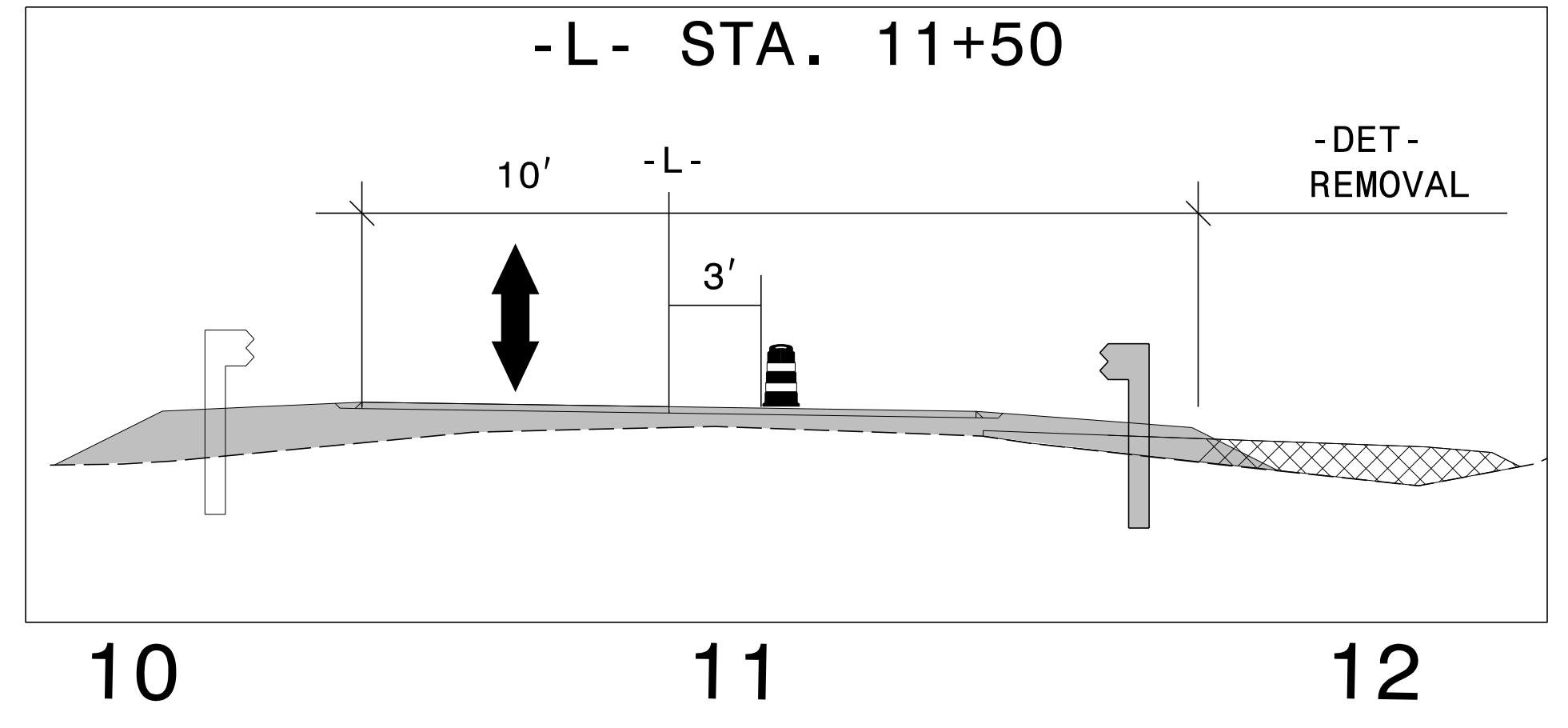
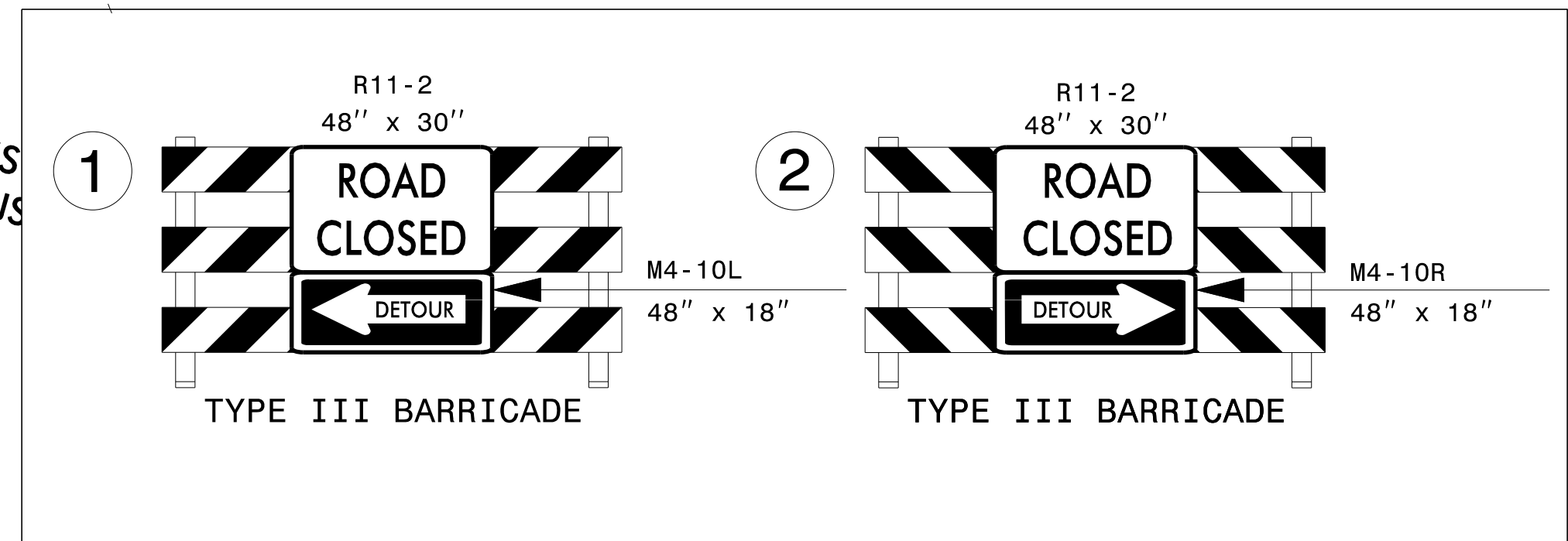


SECTION D-D  
-L- STA. 11+50



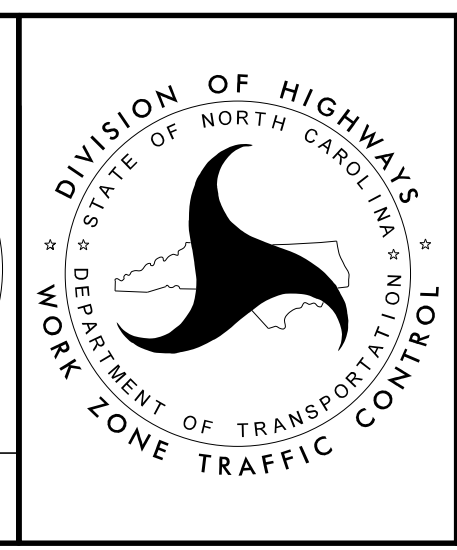
COMPLETE GUARDRAIL INSTALLATION.  
UPON COMPLETION OPEN TO FINAL  
TWO-LANE/TWO-WAY TRAFFIC PATTERN.



APPROVED: *Don A. Parker*  
DATE: 12/20/2016

DocuSigned by:  
Don A. Parker  
400482862618410...

SEAL  
043251  
ENGINEER  
DON A. PARKER



PHASE III  
(STEP 1B)

12/19/2016  
P:\TipProjects\B\B5383\TrafficControl\TCP\B-5383.TC\_TMP\_05.Pll.dgn  
User:keddis