

**This electronic collection of documents is provided  
for the convenience of the user  
and is Not a Certified Document –**

**The documents contained herein were originally issued  
and sealed by the individuals whose names and license  
numbers appear on each page, on the dates appearing  
with their signature on that page.**

**This file or an individual page  
shall not be considered a certified document.**

09\_08/99

**TIP PROJECT: R-5023 B**

See Sheet 1-A For Index of Sheets

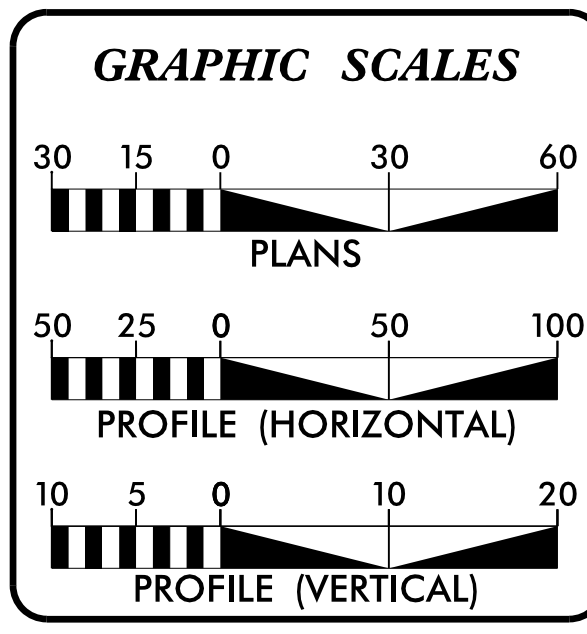
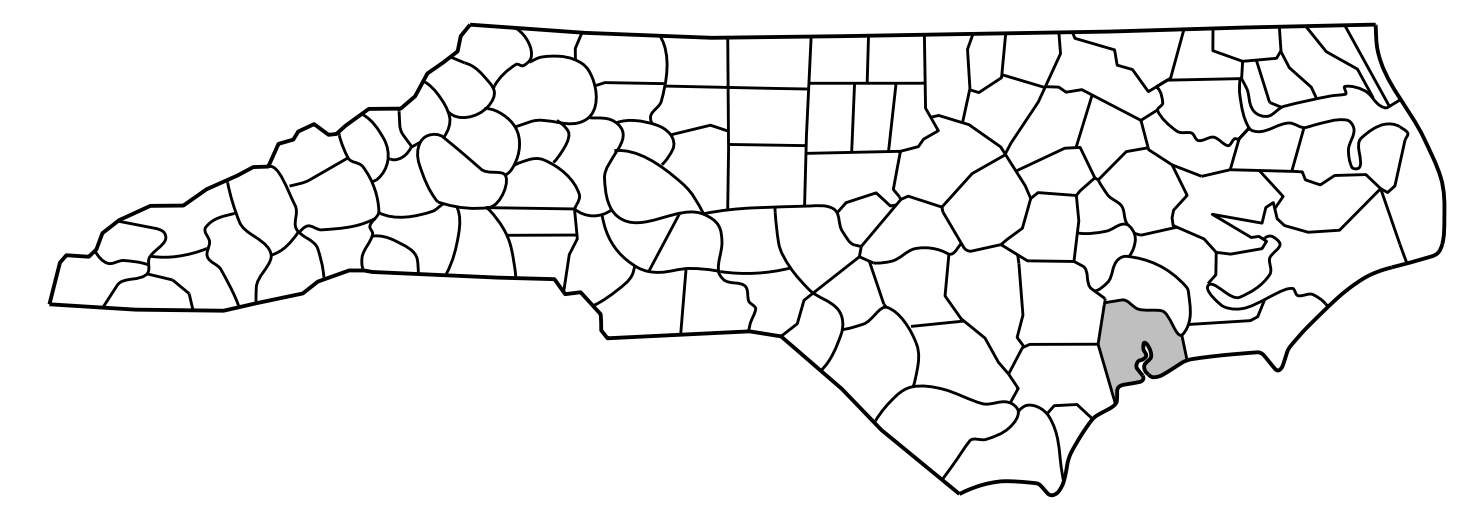
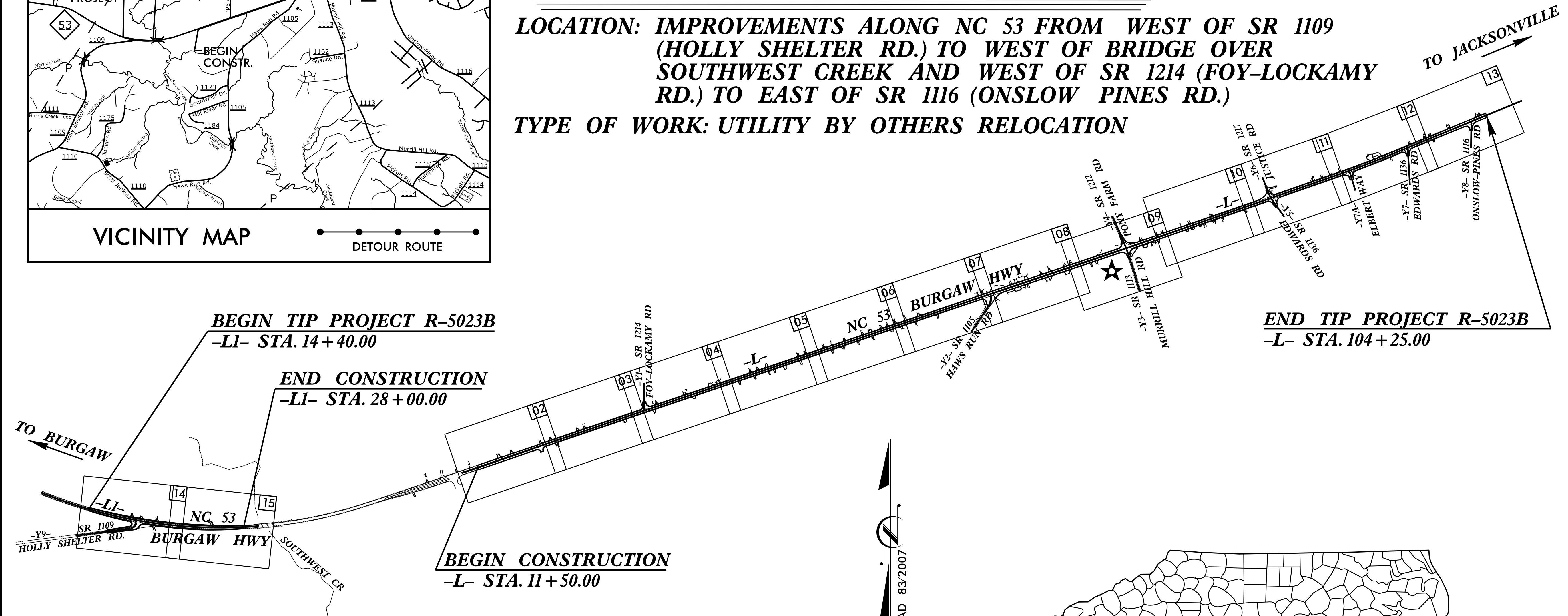
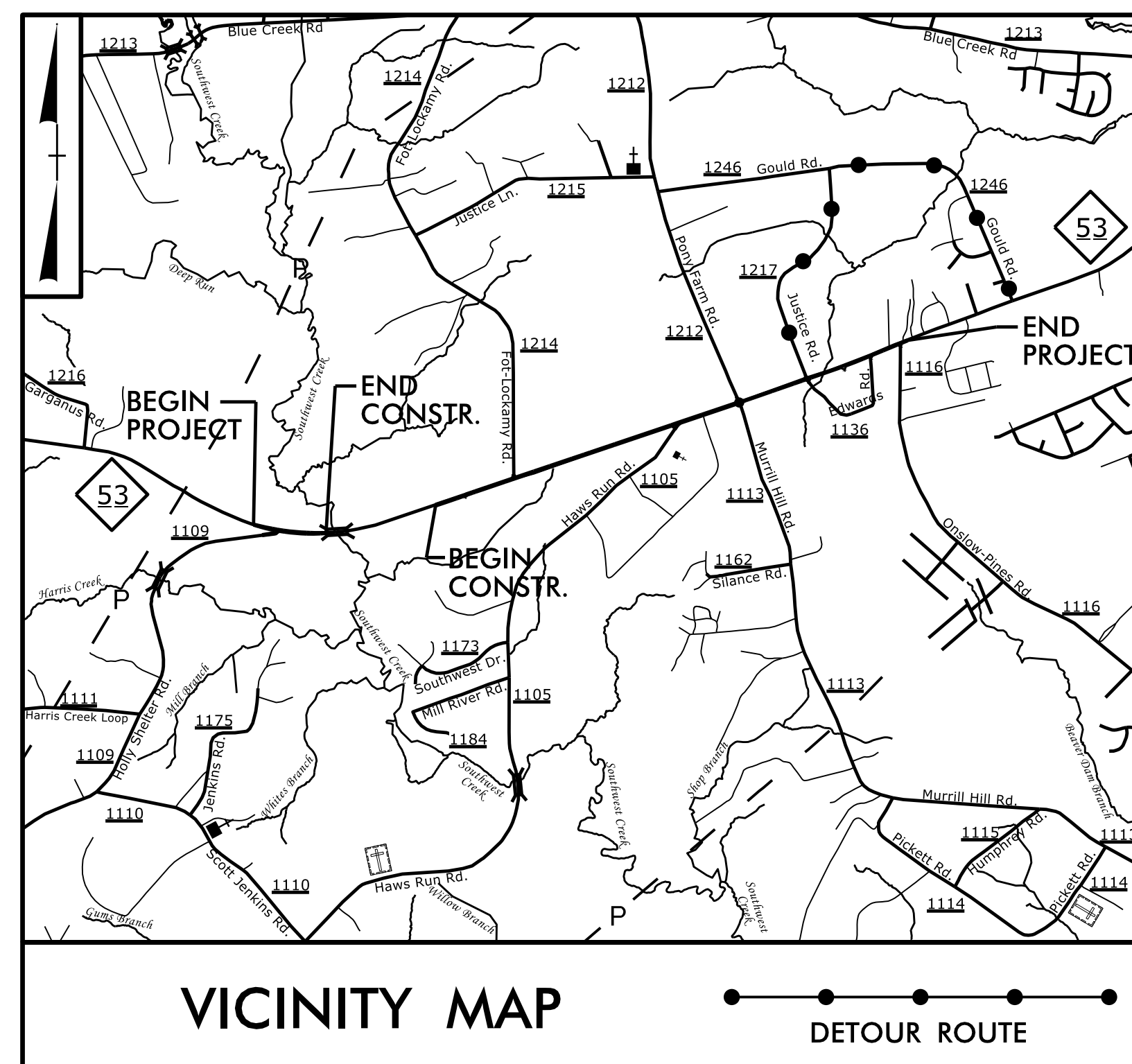
# STATE OF NORTH CAROLINA DIVISION OF HIGHWAYS

T.I.P. NO.	SHEET NO.
R-5023 B	UO-1

## UTILITIES BY OTHERS PLANS ONslow COUNTY


**LOCATION: IMPROVEMENTS ALONG NC 53 FROM WEST OF SR 1109 (HOLLY SHELTER RD.) TO WEST OF BRIDGE OVER SOUTHWEST CREEK AND WEST OF SR 1214 (FOY-LOCKAMY RD.) TO EAST OF SR 1116 (ONslow PINES RD.)**

**TYPE OF WORK: UTILITY BY OTHERS RELOCATION**



INDEX OF SHEETS	
SHEET NO.	DESCRIPTION
UO-1	TITLE SHEET
UO-2 TO UO-14	PLAN SHEET

UTILITY OWNERS ON PROJECT
(1) POWER - JONES ONSLOW EMC
(2) PHONE - CENTURYLINK
(3) CATV - TIME WARNER

**UTILITY DESIGN BY:**  

**M A Engineering Consultants, Inc.**  
 598 East Chatham Street Suite 137 Cary, NC 27511  
 Phone: 919.297.0220 Fax: 919.297.0221  
 NC License: F-0160

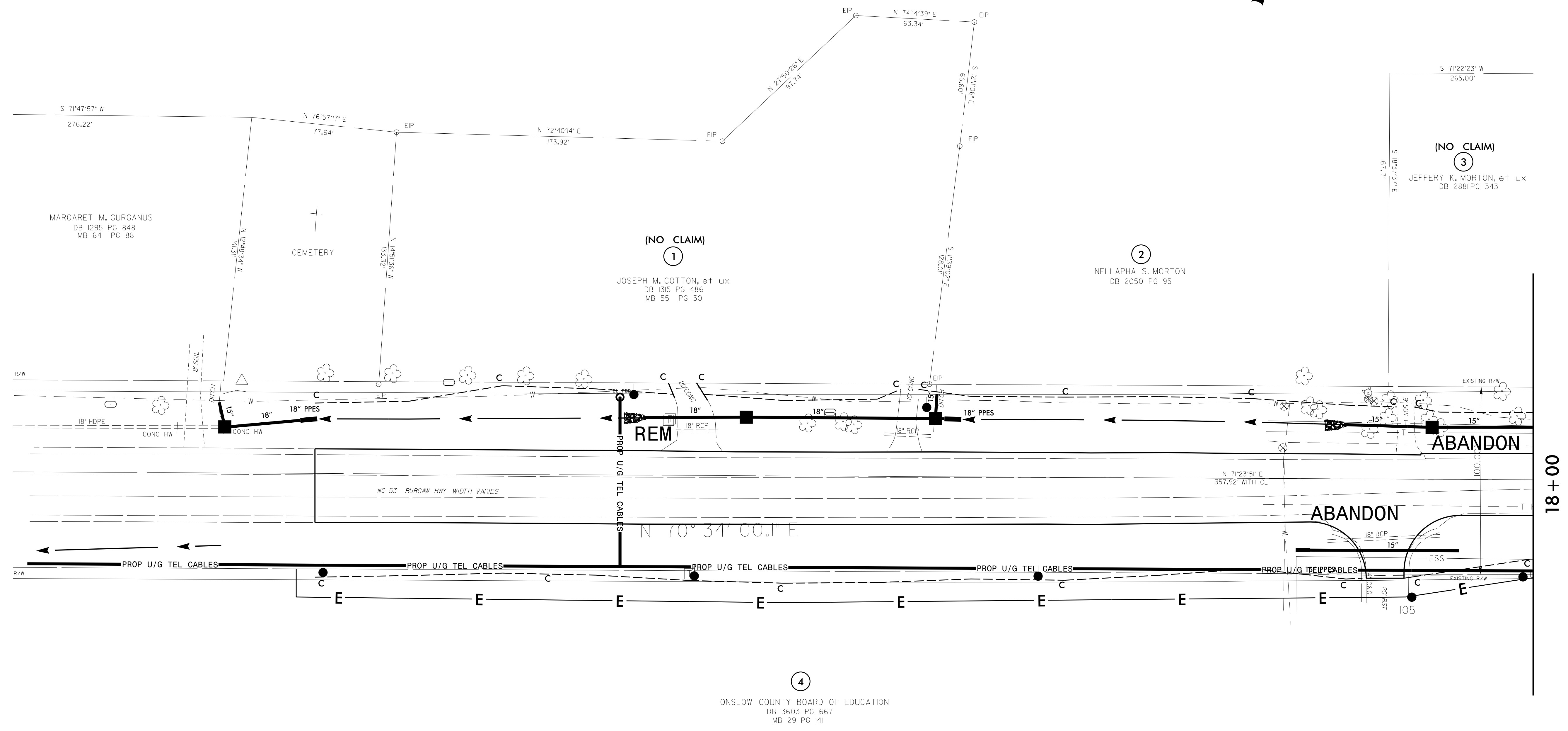
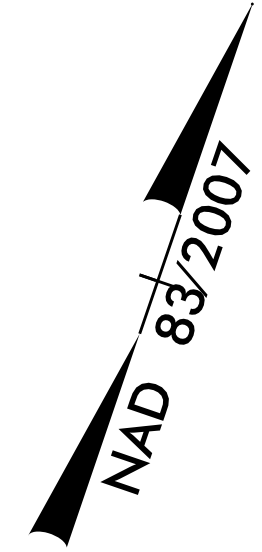
**NC DOT PROJECT ENGINEER:**  
**DAVID B. LEONARD, P.E.**

**PREPARED FOR:**  
 NORTH CAROLINA  
 DEPARTMENT OF TRANSPORTATION  
 DIVISION BRIDGE PROGRAM

7/27/2016 11:40:28 AM P:\0696\020\1000 R-5023\R-5023\_Onslow\Utilities\RDy\_Ut\Proj\R5023\_UO\_UO-01-fsh.dgn

### UTILITIES BY OTHERS

NOTE:  
ALL PROPOSED UTILITY WORK  
SHOWN ON THIS SHEET WILL  
BE DONE BY OTHERS

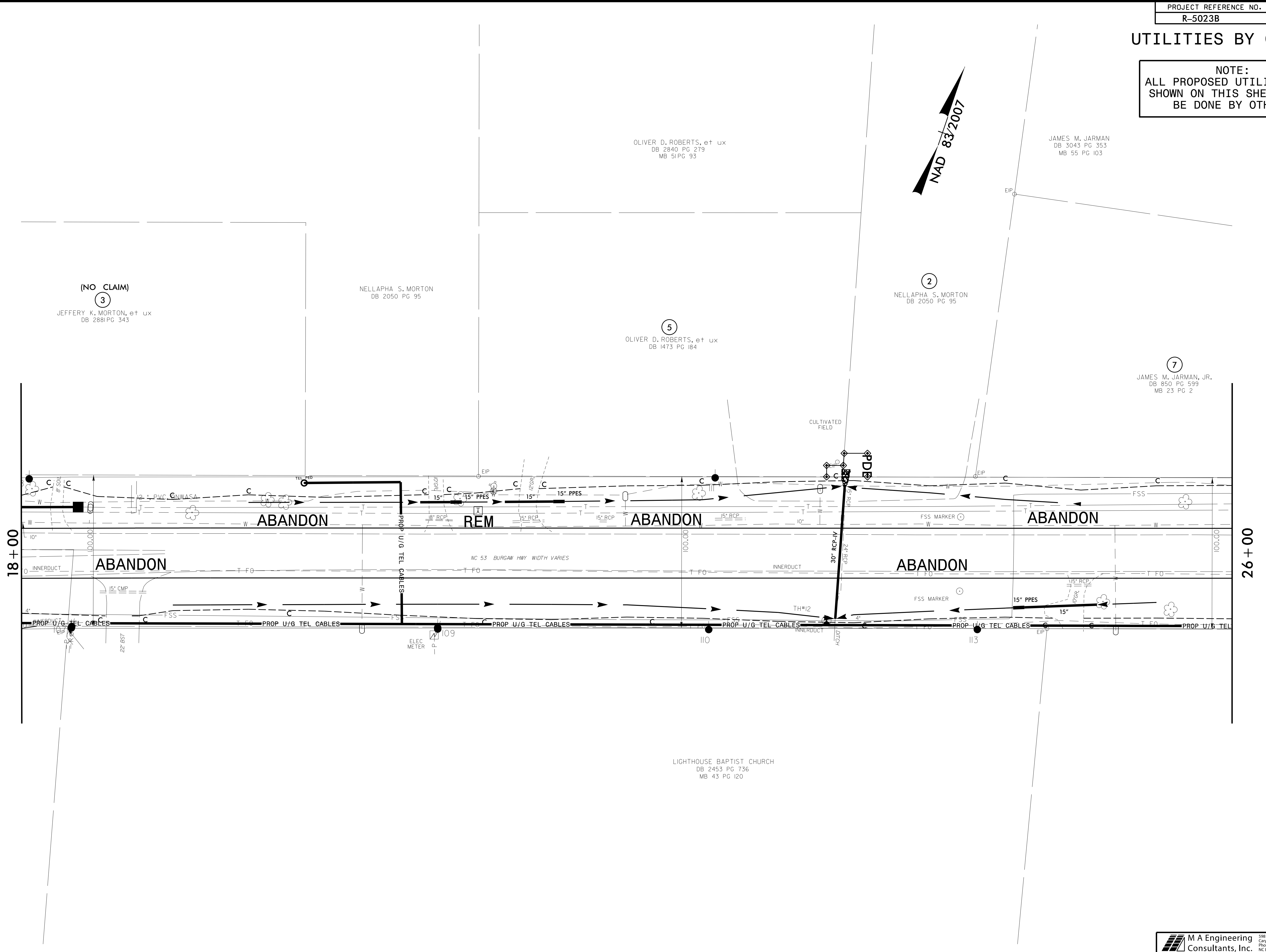


5/14/99

8/13/2015 10:00 R-5023B\150610\00\onslow\Utilities\Rd\Utility\Proj\RE023\_UO-UO-02\_psh.dgn

**UTILITIES BY OTHERS**

NOTE:  
ALL PROPOSED UTILITY WORK  
SHOWN ON THIS SHEET WILL  
BE DONE BY OTHERS



(NO CLAIM)

(3)

JEFFERY K. MORTON, et ux  
DB 2881 PG 343

NELLAPHA S. MORTON  
DB 2050 PG 95

OLIVER D. ROBERTS, et ux  
DB 2840 PG 279  
MB 51 PG 93

(5)

OLIVER D. ROBERTS, et ux  
DB 1473 PG 184

(2)

NELLAPHA S. MORTON  
DB 2050 PG 95

(7)

JAMES M. JARMAN, JR.  
DB 850 PG 599  
MB 23 PG 2

18+00

26+00

ABANDON

REM

ABANDON

ABANDON

ABANDON

ABANDON

15" CMP

22' BST

ELEC METER

109

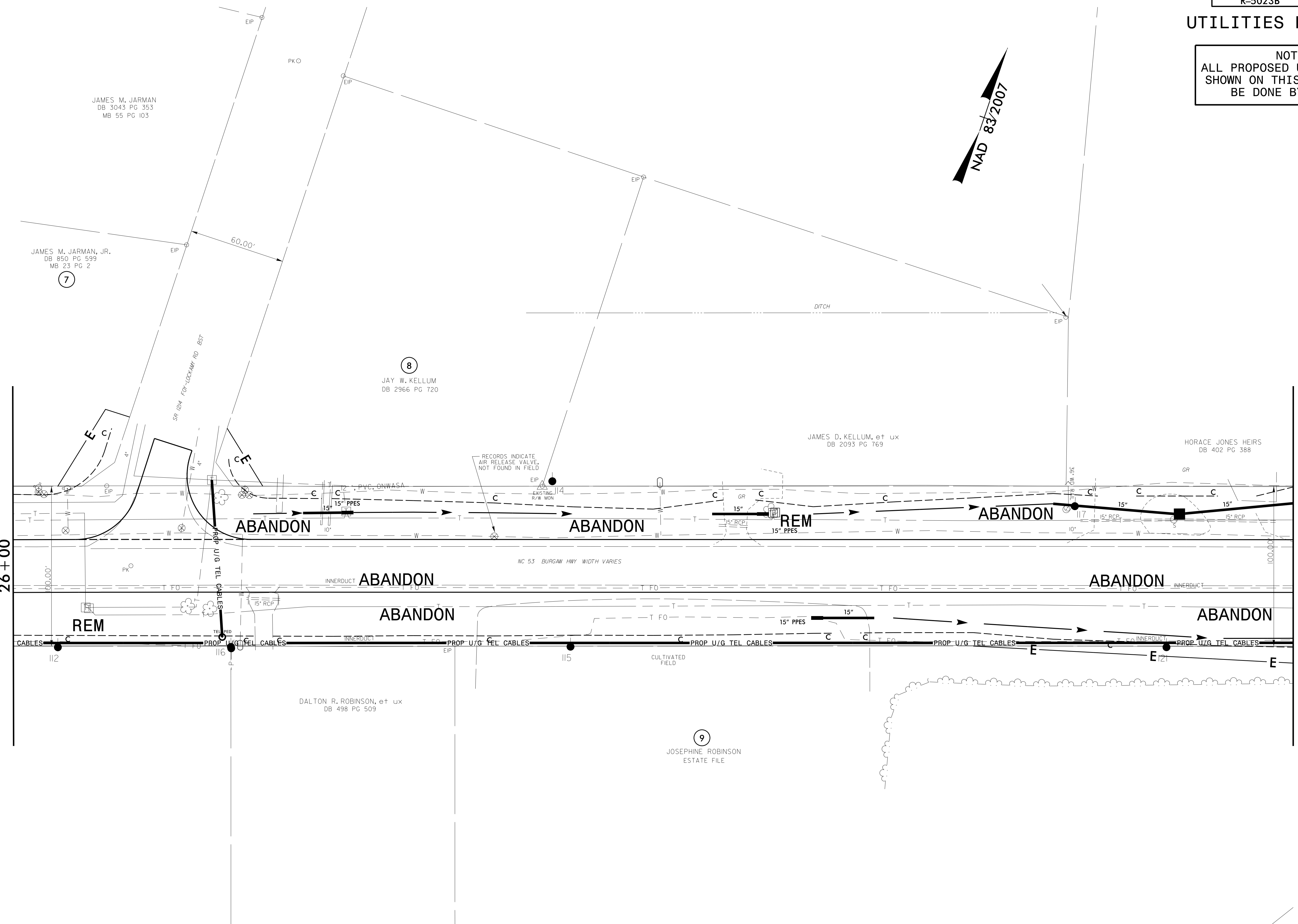
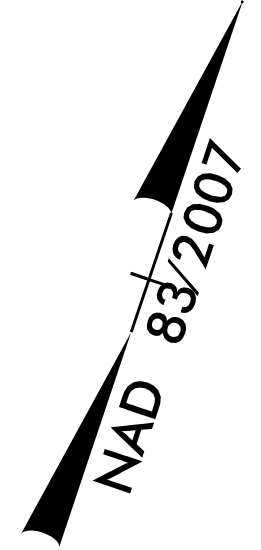
110

113

LIGHTHOUSE BAPTIST CHURCH  
DB 2453 PG 736  
MB 43 PG 120

### UTILITIES BY OTHERS

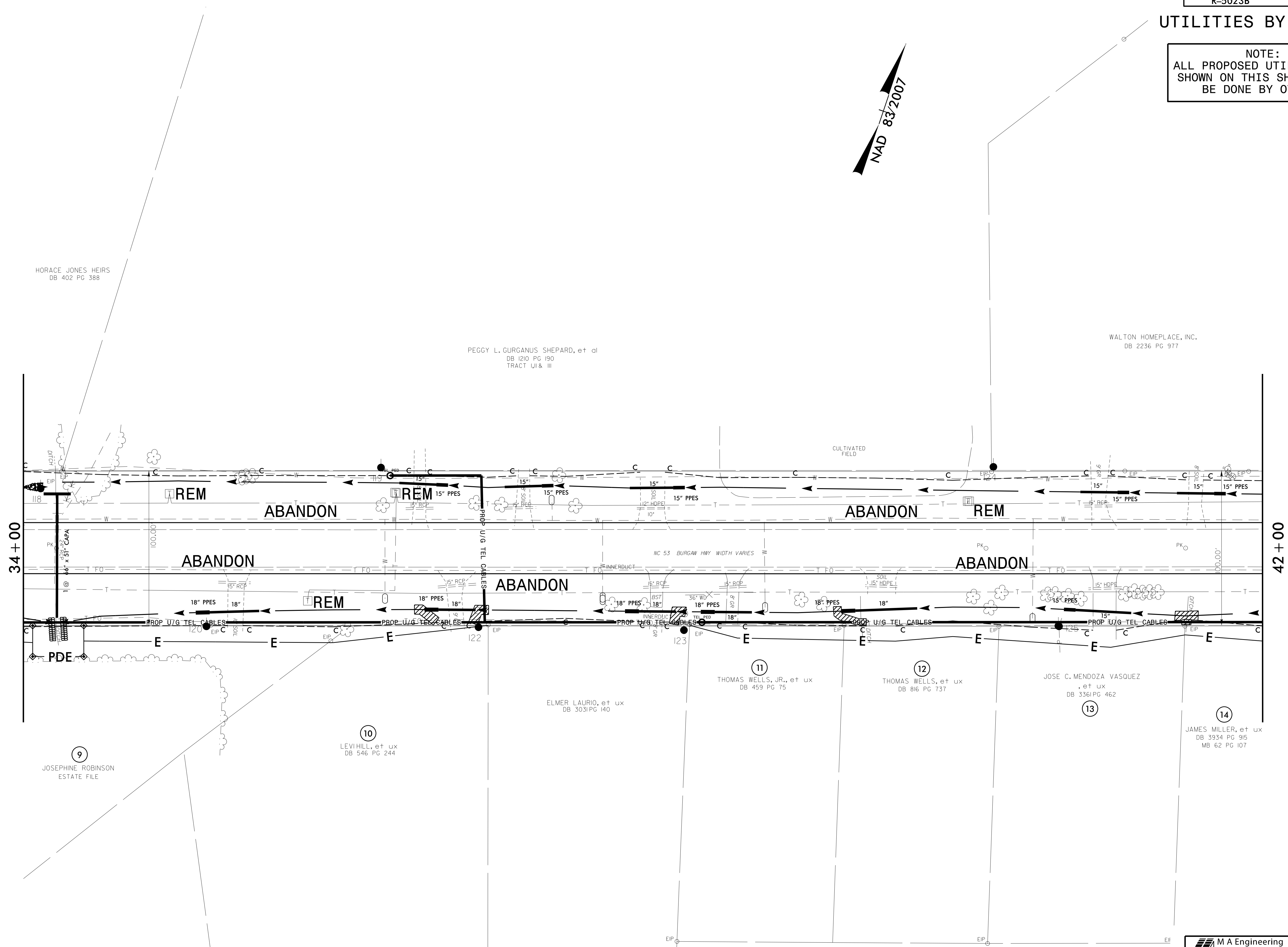
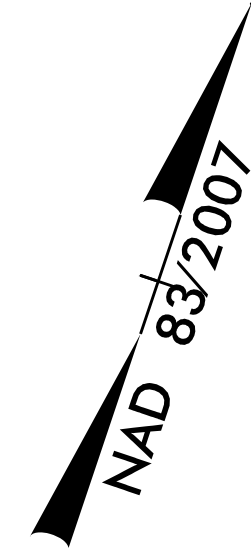
**NOTE:**  
ALL PROPOSED UTILITY WORK  
SHOWN ON THIS SHEET WILL  
BE DONE BY OTHERS



5/14/99  
 T:\2002\5023B\UO\UO-04.dwg  
 1000 R-5023B\UO\UO-04.dwg  
 T:\2002\5023B\UO\UO-04.dwg  
 1000 R-5023B\UO\UO-04.dwg

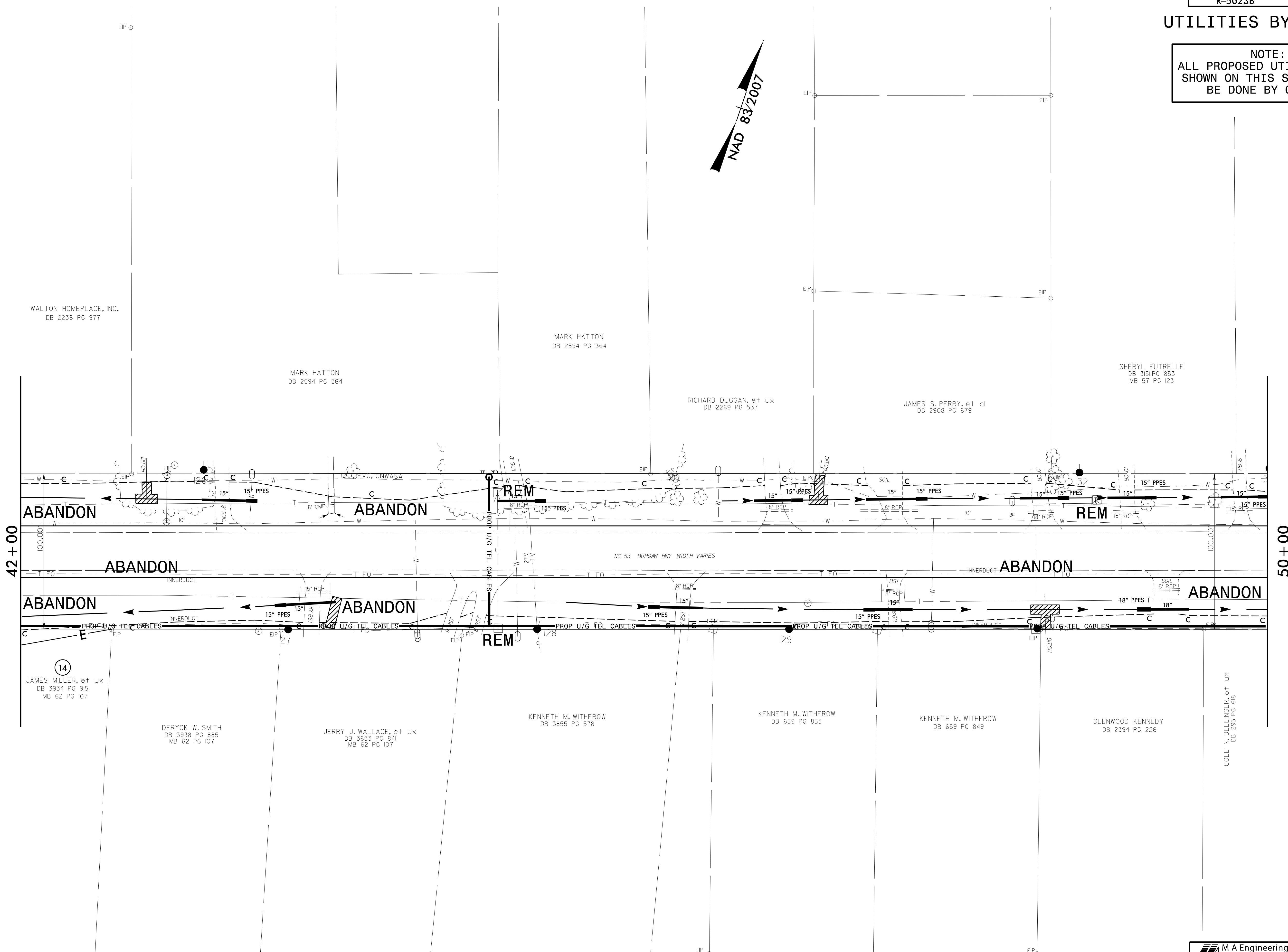
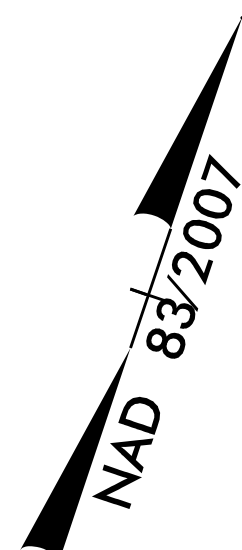
**UTILITIES BY OTHERS**

**NOTE:**  
 ALL PROPOSED UTILITY WORK  
 SHOWN ON THIS SHEET WILL  
 BE DONE BY OTHERS



### UTILITIES BY OTHERS

NOTE:  
ALL PROPOSED UTILITY WORK  
SHOWN ON THIS SHEET WILL  
BE DONE BY OTHERS



WALTON HOMEPPLACE, INC.  
DB 2236 PG 977

MARK HATTON  
DB 2594 PG 364

MARK HATTON  
DB 2594 PG 364

RICHARD DUGGAN, et ux  
DB 2269 PG 537

JAMES S. PERRY, et al  
DB 2908 PG 679

SHERYL FUTRELLE  
DB 3151 PG 853  
MB 57 PG 123

42+00

50+00

14  
JAMES MILLER, et ux  
DB 3934 PG 915  
MB 62 PG 107

DERYCK W. SMITH  
DB 3938 PG 885  
MB 62 PG 107

JERRY J. WALLACE, et ux  
DB 3633 PG 841  
MB 62 PG 107

KENNETH M. WITHEROW  
DB 3855 PG 578

KENNETH M. WITHEROW  
DB 659 PG 853

KENNETH M. WITHEROW  
DB 659 PG 849

GLENWOOD KENNEDY  
DB 2394 PG 226

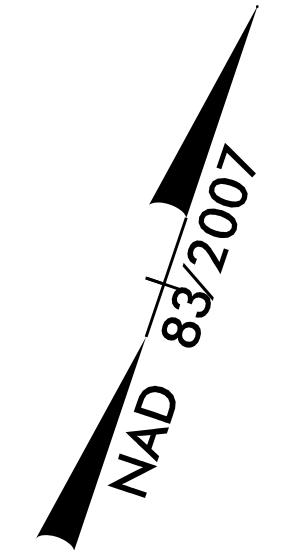
COLE N. DELLINGER, et ux  
DB 2951 PG 618

5/14/99  
1000 R-5023B\23872016\00\low\Ut11\tes\Redj\_Ut\Proc\RE023\_UO-UO-06\_psh.dgn



# UTILITIES BY OTHERS

**NOTE:**  
ALL PROPOSED UTILITY WORK  
SHOWN ON THIS SHEET WILL  
BE DONE BY OTHERS



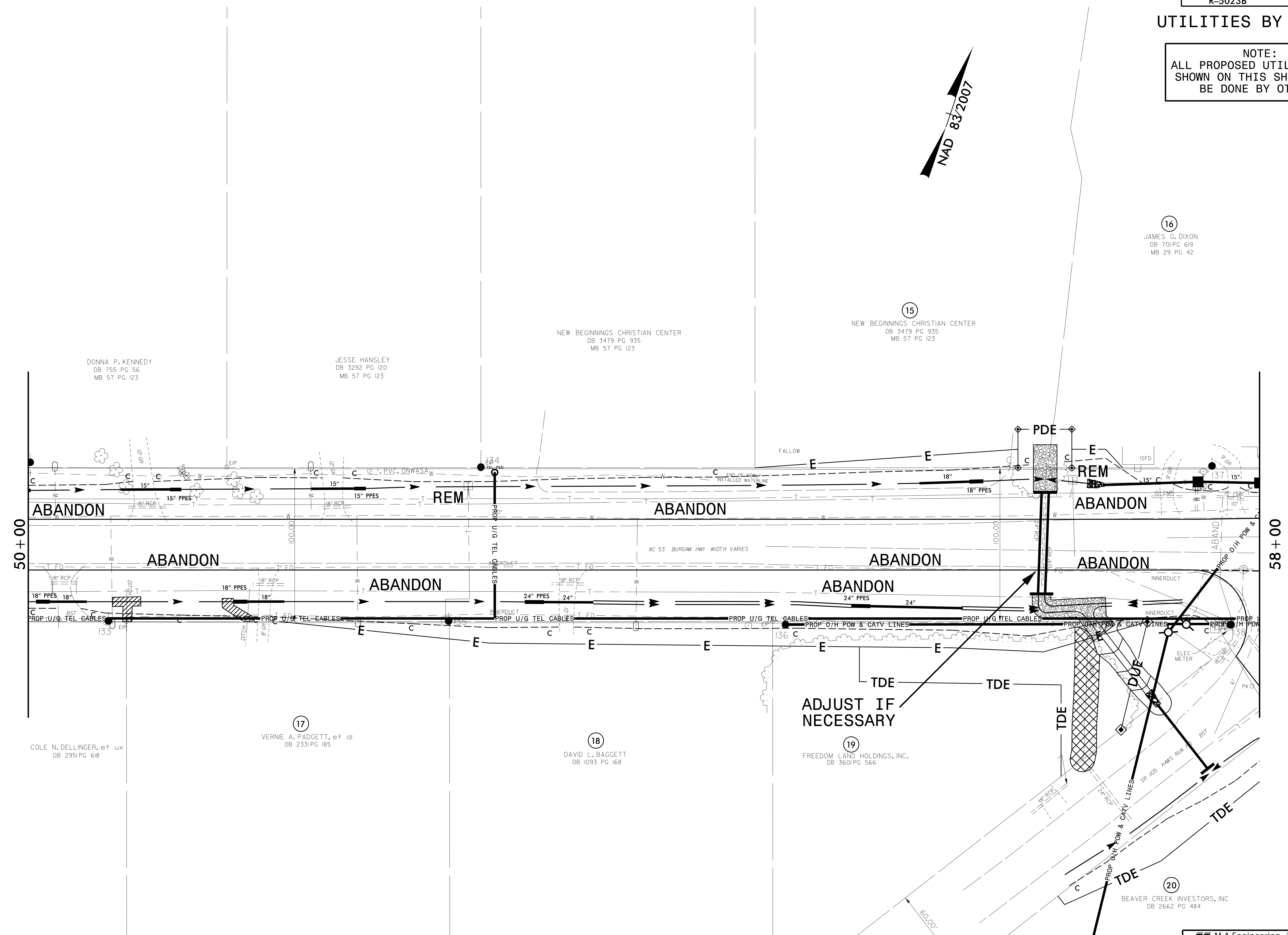
16  
JAMES G. DIXON  
DB 701 PG 619  
MB 29 PG 42

15  
NEW BEGINNINGS CHRISTIAN CENTER  
DB 3479 PG 935  
MB 57 PG 123

NEW BEGINNINGS CHRISTIAN CENTER  
DB 3479 PG 935  
MB 57 PG 123

JESSE HANSLEY  
DB 3292 PG 120  
MB 57 PG 123

DONNA P. KENNEDY  
DB 755 PG 56  
MB 57 PG 123



TDE TDE TDE  
**ADJUST IF NECESSARY**

17  
COLE N. DELLINGER, et ux  
DB 2951 PG 618

17  
VERNIE A. PADGETT, et al  
DB 2331 PG 185

18  
DAVID L. BAGGETT  
DB 1093 PG 168

19  
FREEDOM LAND HOLDINGS, INC.  
DB 3601 PG 566

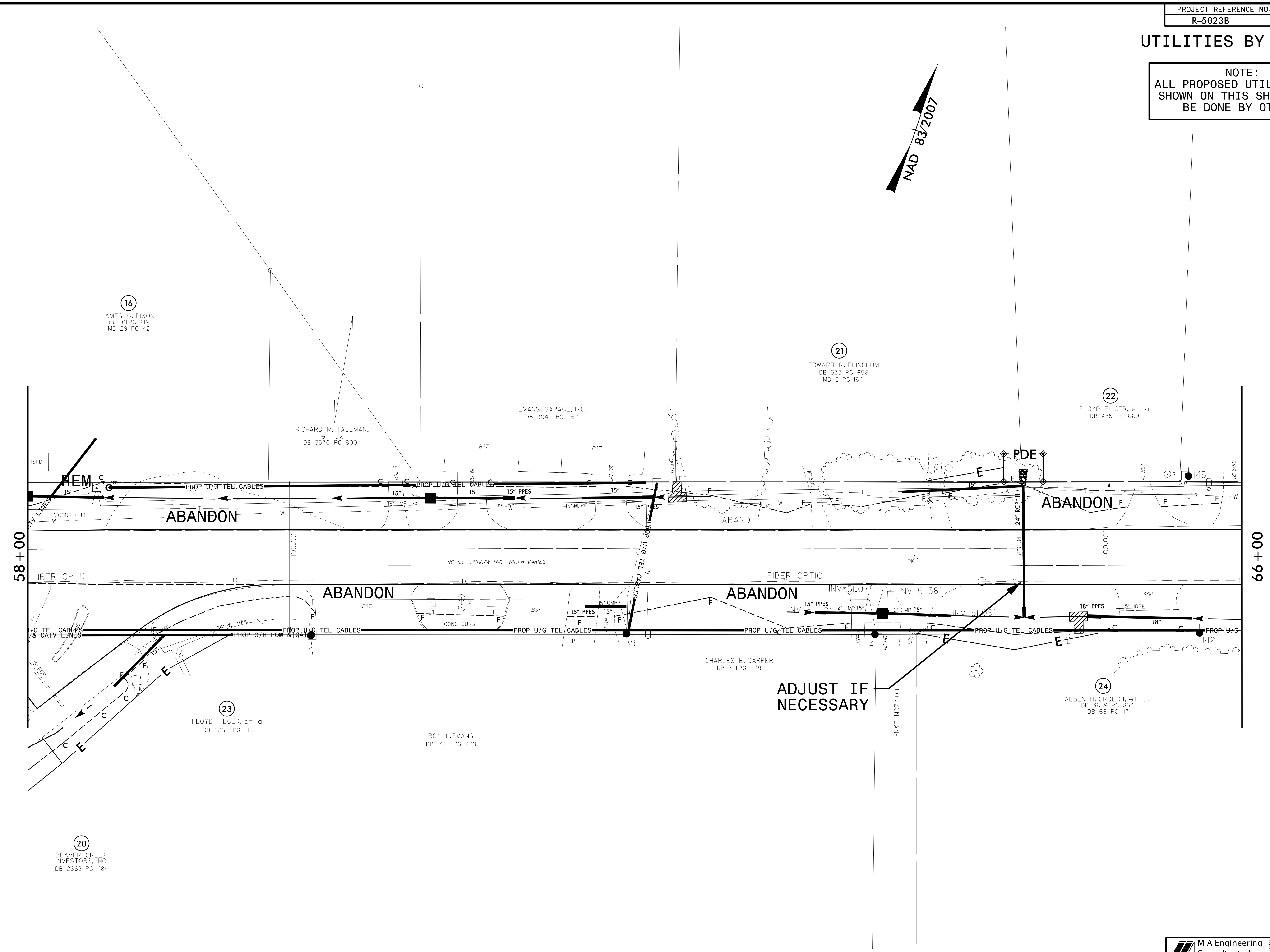
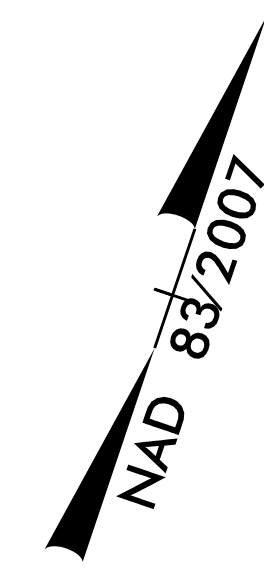
20  
BEAVER CREEK INVESTORS, INC.  
DB 2662 PG 484

5/14/99  
100 R-5023B 5/28/2016 C:\Users\low\Utilities\Redj\_Ut\Proj\RE023\_UO\_UO-07\_psh.dgn



UTILITIES BY OTHERS

NOTE:  
ALL PROPOSED UTILITY WORK  
SHOWN ON THIS SHEET WILL  
BE DONE BY OTHERS

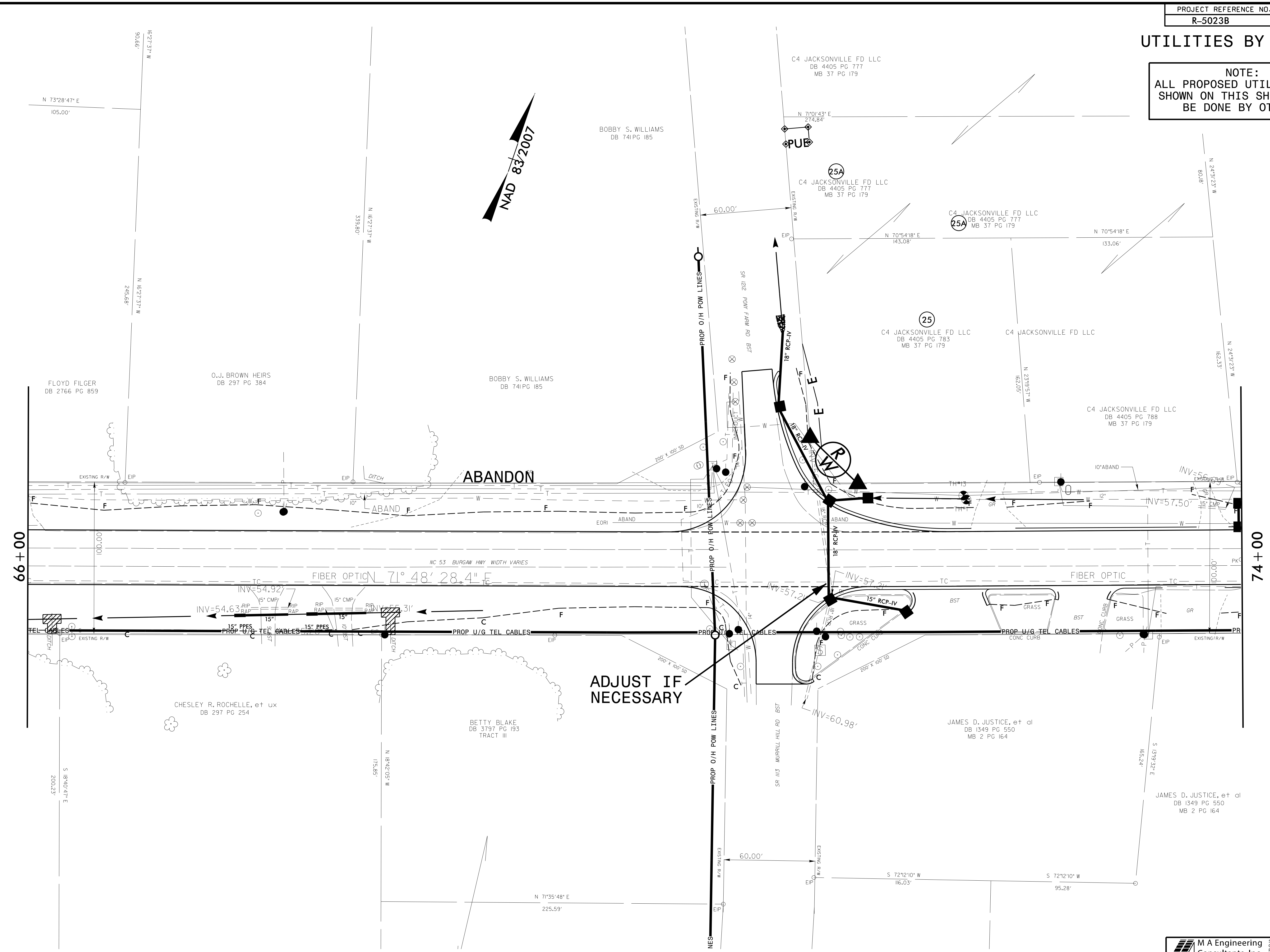


ADJUST IF  
NECESSARY

5/14/99  
100 R-5023B UO-08.dgn  
C:\Users\low\Documents\Projects\RE023\_UO-UO-08\_psh.dgn  
11/02/2016

### UTILITIES BY OTHERS

**NOTE:**  
ALL PROPOSED UTILITY WORK  
SHOWN ON THIS SHEET WILL  
BE DONE BY OTHERS



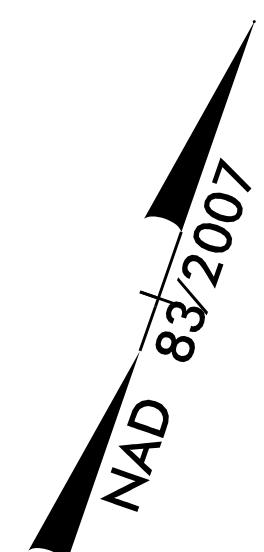
**ADJUST IF  
NECESSARY**

100 R-5023B.dwg 11/15/2016 10:58:20 AM C:\Users\low\OneDrive\Documents\Projects\RE023\_UO-UO-09\_psh.dgn  
 5/14/99



### UTILITIES BY OTHERS

NOTE:  
ALL PROPOSED UTILITY WORK  
SHOWN ON THIS SHEET WILL  
BE DONE BY OTHERS

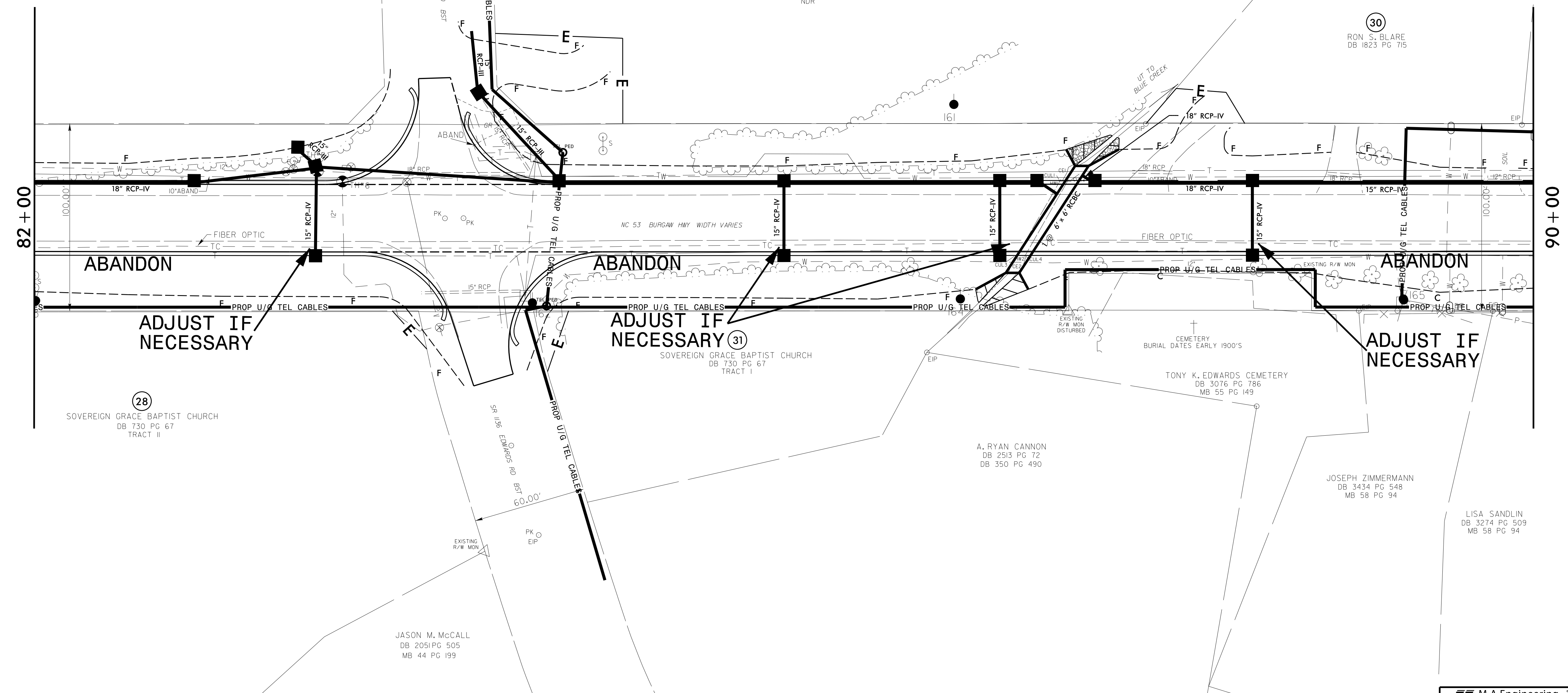


TONY EDUARDE  
DB 328 PG 176

SUSAN CASTELLANOS  
NDR

29  
SOUTHWEST PRIMITIVE BAPTIST  
NDR

30  
RON S. BLARE  
DB 1823 PG 715



82+00

90+00

ABANDON

ABANDON

ABANDON

ADJUST IF  
NECESSARY

ADJUST IF  
NECESSARY

ADJUST IF  
NECESSARY

28  
SOVEREIGN GRACE BAPTIST CHURCH  
DB 730 PG 67  
TRACT II

31  
SOVEREIGN GRACE BAPTIST CHURCH  
DB 730 PG 67  
TRACT I

TONY K. EDWARDS CEMETERY  
DB 3076 PG 786  
MB 55 PG 149

A. RYAN CANNON  
DB 2513 PG 72  
DB 350 PG 490

JOSEPH ZIMMERMANN  
DB 3434 PG 548  
MB 58 PG 94

LISA SANDLIN  
DB 3274 PG 509  
MB 58 PG 94

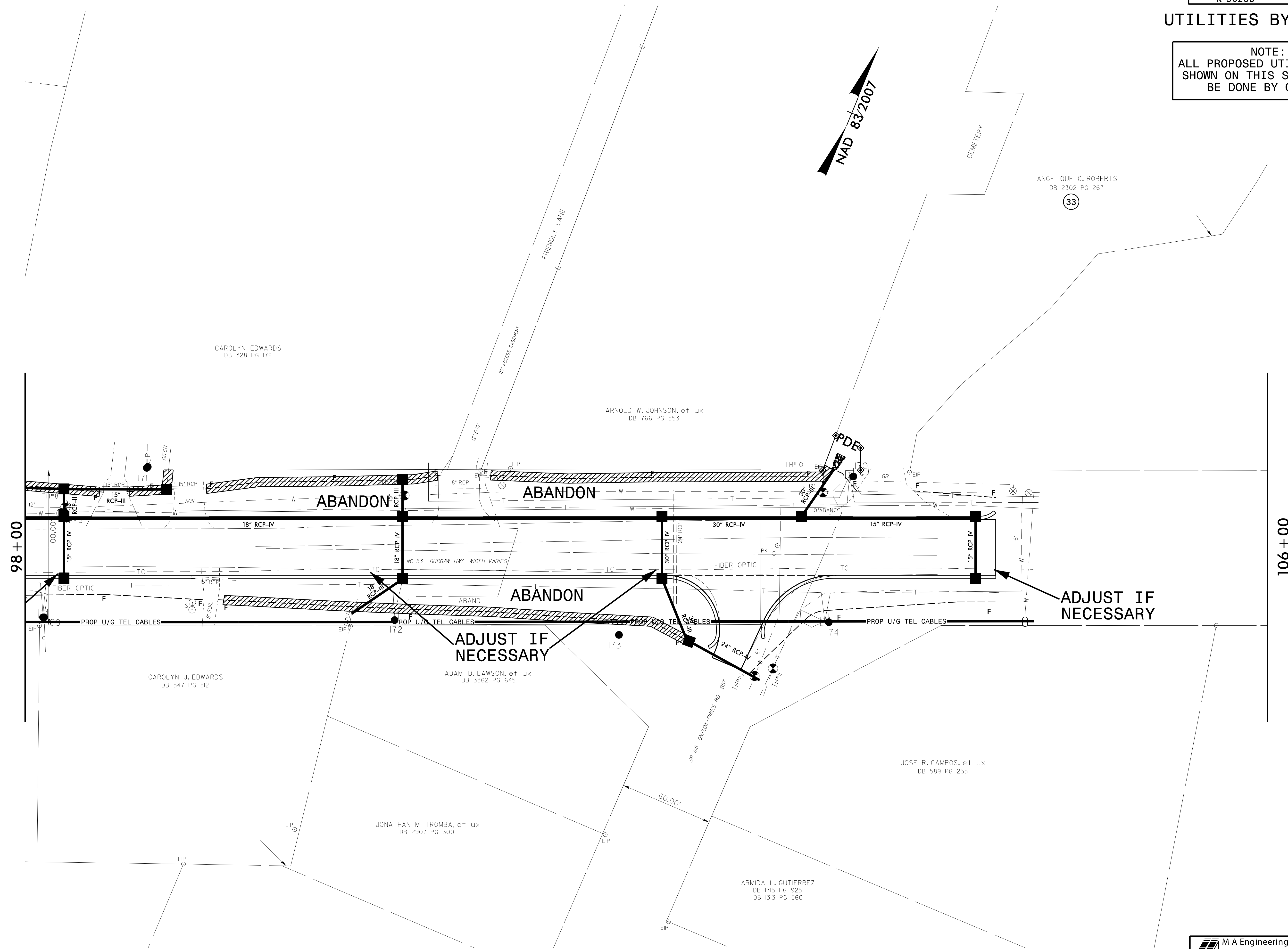
JASON M. McCALL  
DB 2051 PG 505  
MB 44 PG 199

2000 R-5023B\62822016\mslow\Utilities\RDJ\_Ut\Proj\NR5023\_UO\_UO-11\_psh.dgn  
 5/14/99



### UTILITIES BY OTHERS

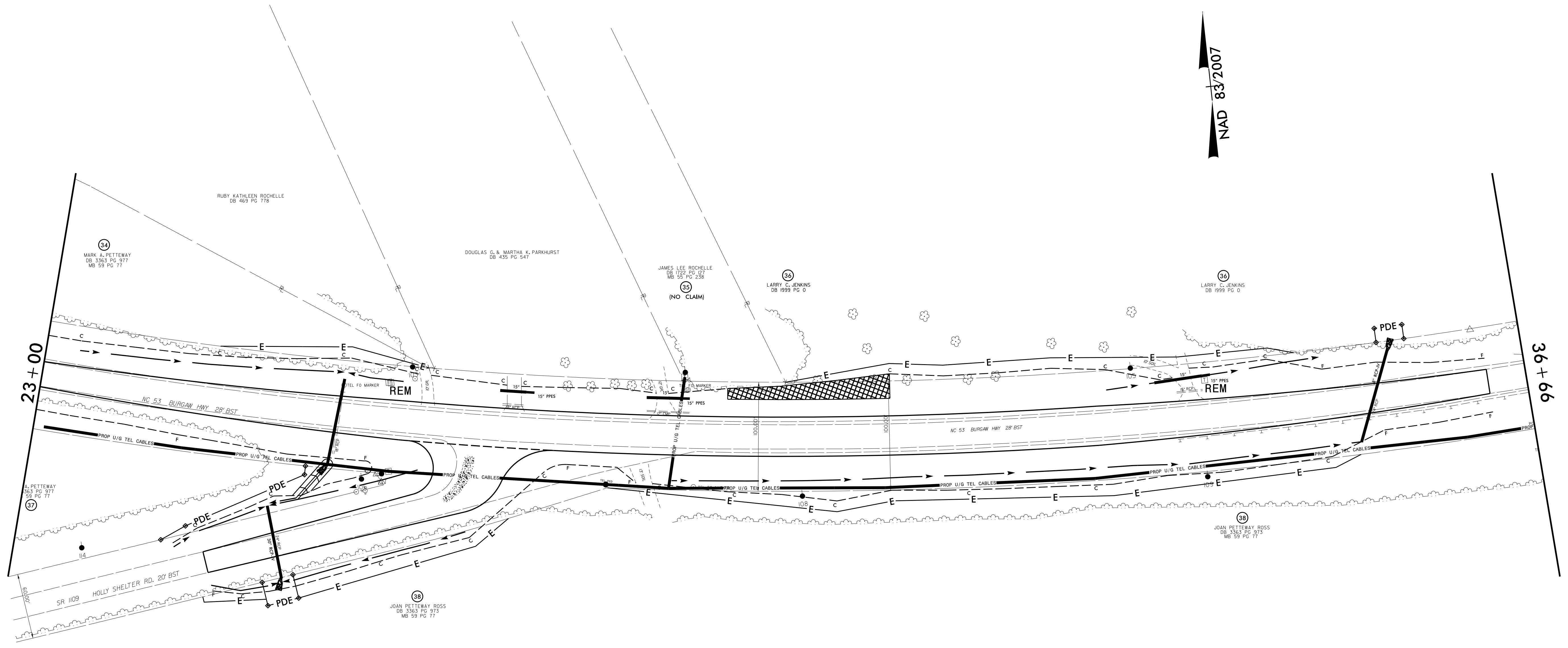
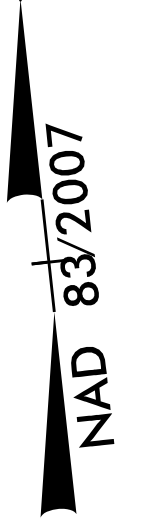
NOTE:  
ALL PROPOSED UTILITY WORK  
SHOWN ON THIS SHEET WILL  
BE DONE BY OTHERS



5/14/99  
 7/28/2006  
 11/14/2006  
 000 R-5023B\5023B\UO\UO-13.psh.dgn  
 C:\mslow\Utilities\Rdy\_Ut\Proj\NR5023.UO.UO-13.psh.dgn

**UTILITIES BY OTHERS**

**NOTE:**  
ALL PROPOSED UTILITY WORK  
SHOWN ON THIS SHEET WILL  
BE DONE BY OTHERS



REVISIONS

8/17/99

F:\2006\0696\020\11000 R-5023\1-5023-UO-14.dgn  
 11-07-02  
 11-07-02