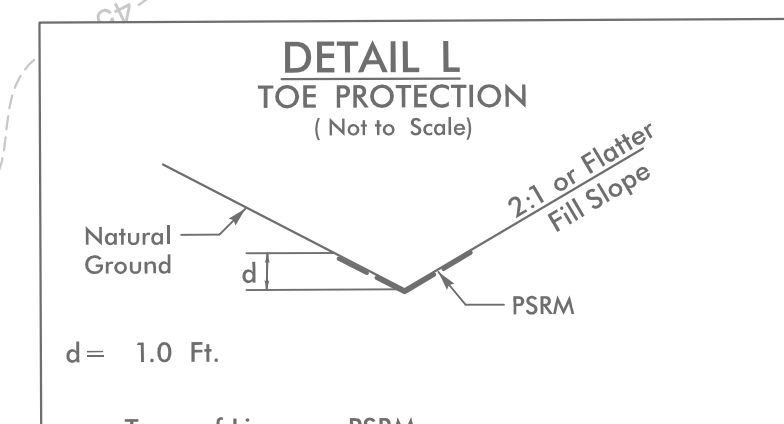
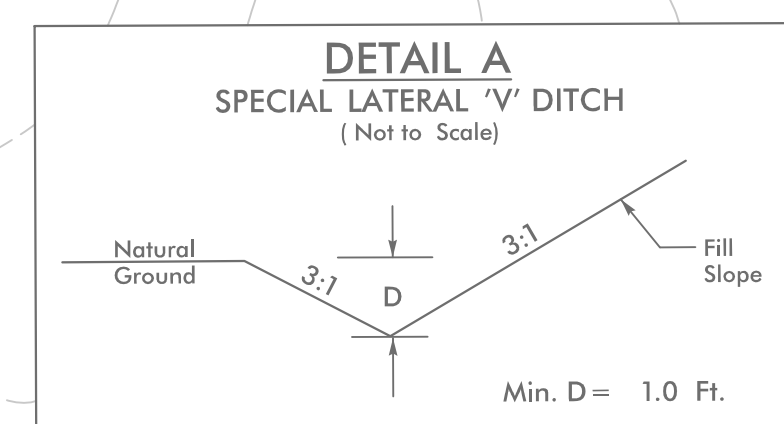


PROJECT REFERENCE NO.	SHEET NO.
R-5023B	EC-28/CONST.14
RW SHEET NO.	
ROADWAY DESIGN ENGINEER	HYDRAULICS ENGINEER
HNTB	
<small>HNTB NORTH CAROLINA, P.C. 343 E. Six Forks Road, Suite 200 Raleigh, North Carolina 27609 NC License No: C-1554</small>	

-L-

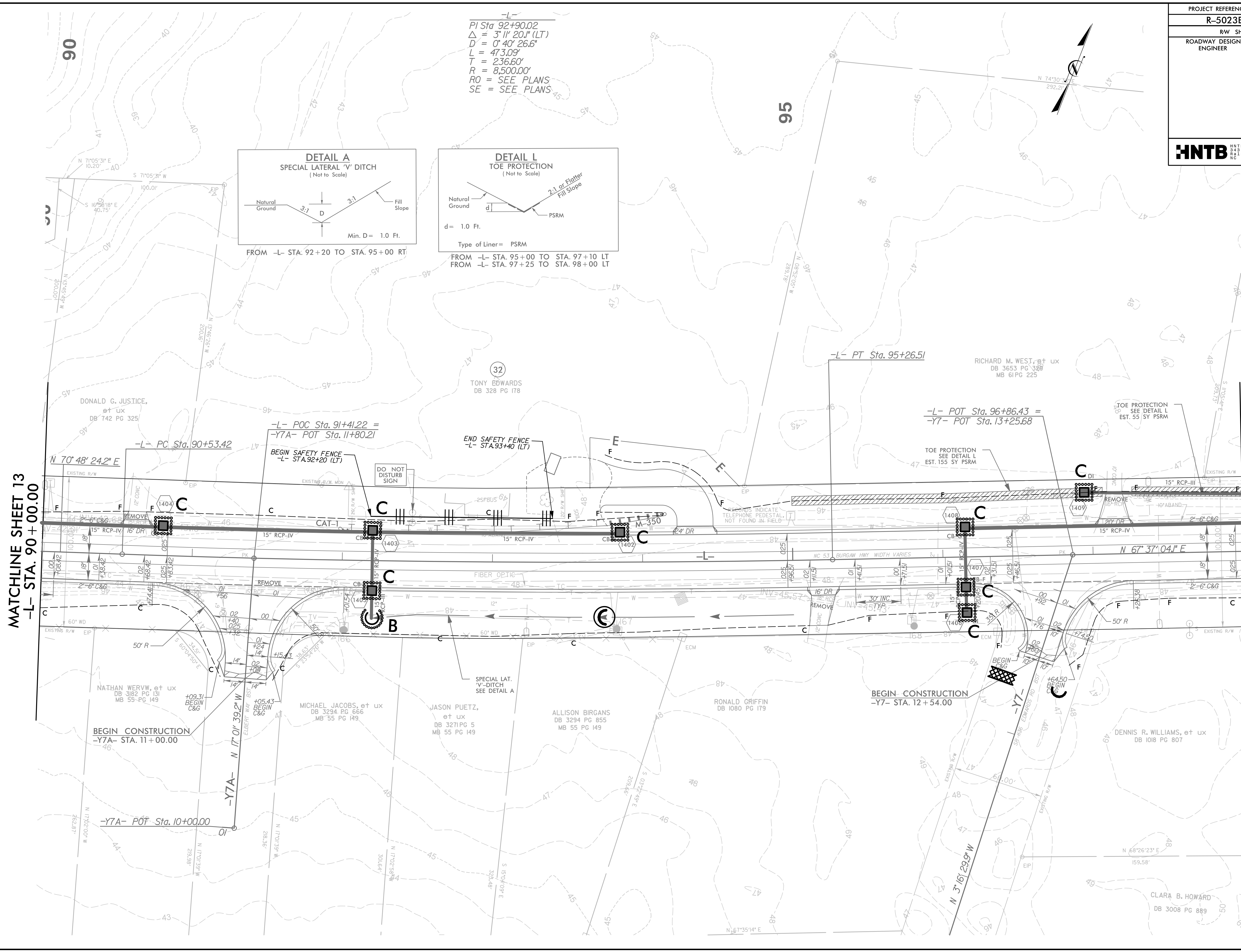
PI Sta 92+90.02
 $\Delta = 3^{\circ}11'20.1''$ (LT)
 $D = 0^{\circ}40'26.6''$
 $L = 473.09'$
 $T = 236.60'$
 $R = 8,500.00'$
 RO = SEE PLANS
 SE = SEE PLANS



FROM -L- STA. 92+20 TO STA. 95+00 RT

FROM -L- STA. 95+00 TO STA. 97+10 LT
FROM -L- STA. 97+25 TO STA. 98+00 LT

8/17/99
 REVISIONS
 4:15:41 PM
 R-5023B.ec.psh_14.dgn
 HNTB



MATCHLINE SHEET 15
 -L- STA. 98+00.00