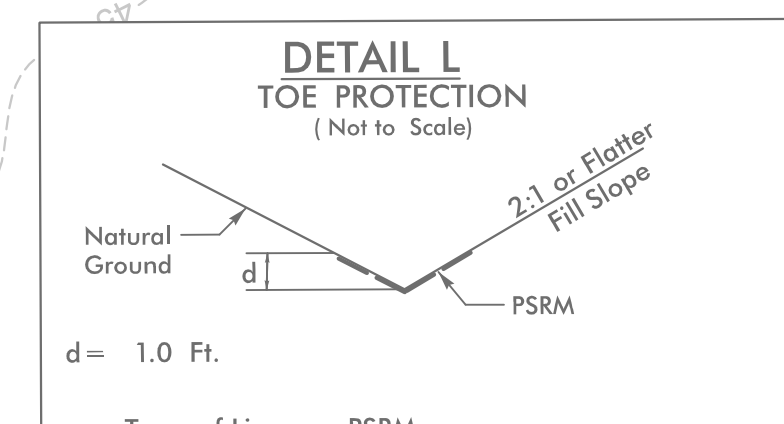
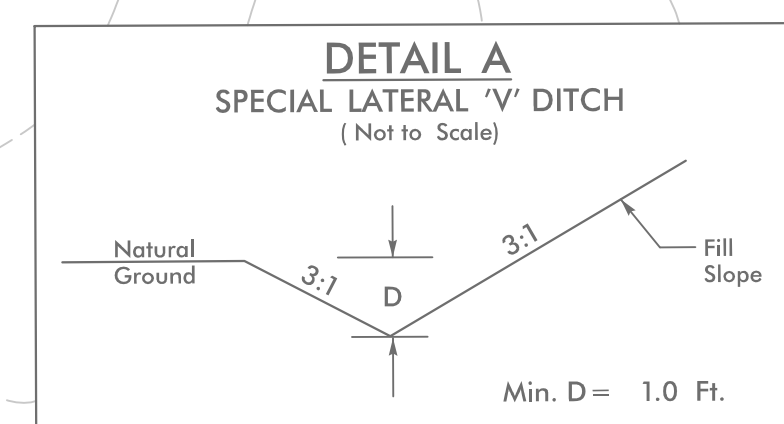


PROJECT REFERENCE NO.	SHEET NO.
R-5023B	EC-14/CONST.14
RW SHEET NO.	
ROADWAY DESIGN ENGINEER	HYDRAULICS ENGINEER
<b>HNTB</b>	
<small>HNTB NORTH CAROLINA, P.C.          343 E. Six Forks Road, Suite 200          Raleigh, North Carolina 27609          NC License No: C-1554</small>	

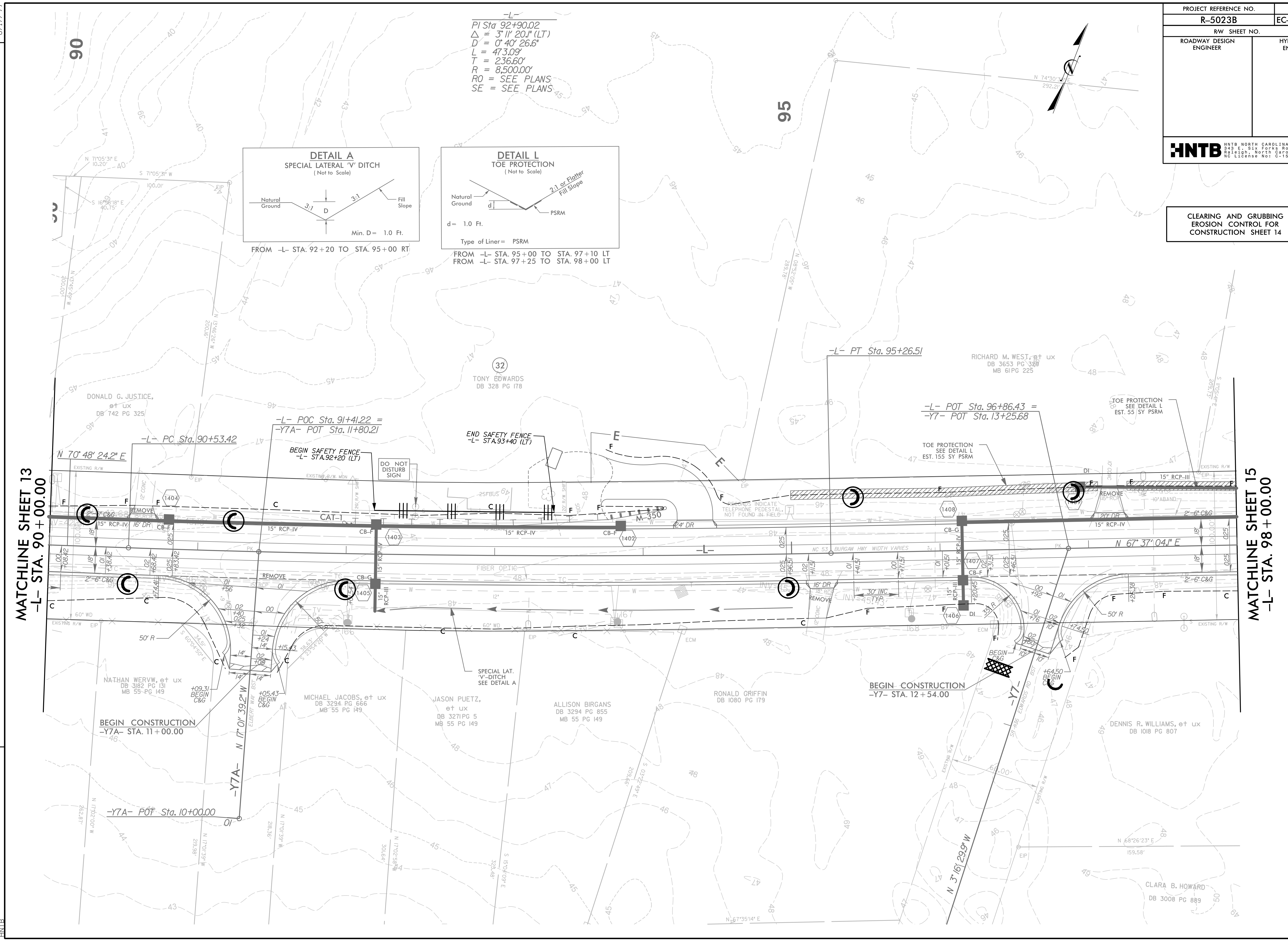
CLEARING AND GRUBBING  
EROSION CONTROL FOR  
CONSTRUCTION SHEET 14

-L-  
 PI Sta. 92+90.02  
 $\Delta = 3^\circ 11' 20.1''$  (LT)  
 $D = 0' 40' 26.6''$   
 $L = 473.09'$   
 $T = 236.60'$   
 $R = 8,500.00'$   
 RO = SEE PLANS  
 SE = SEE PLANS



FROM -L- STA. 92+20 TO STA. 95+00 RT

FROM -L- STA. 95+00 TO STA. 97+10 LT  
 FROM -L- STA. 97+25 TO STA. 98+00 LT



MATCHLINE SHEET 13  
-L- STA. 90+00.00

MATCHLINE SHEET 15  
-L- STA. 98+00.00

REVISIONS

8/17/99  
4:09:38 PM  
R:\Projects\23B\23B.ecg.psh\_14.dgn  
HNTB