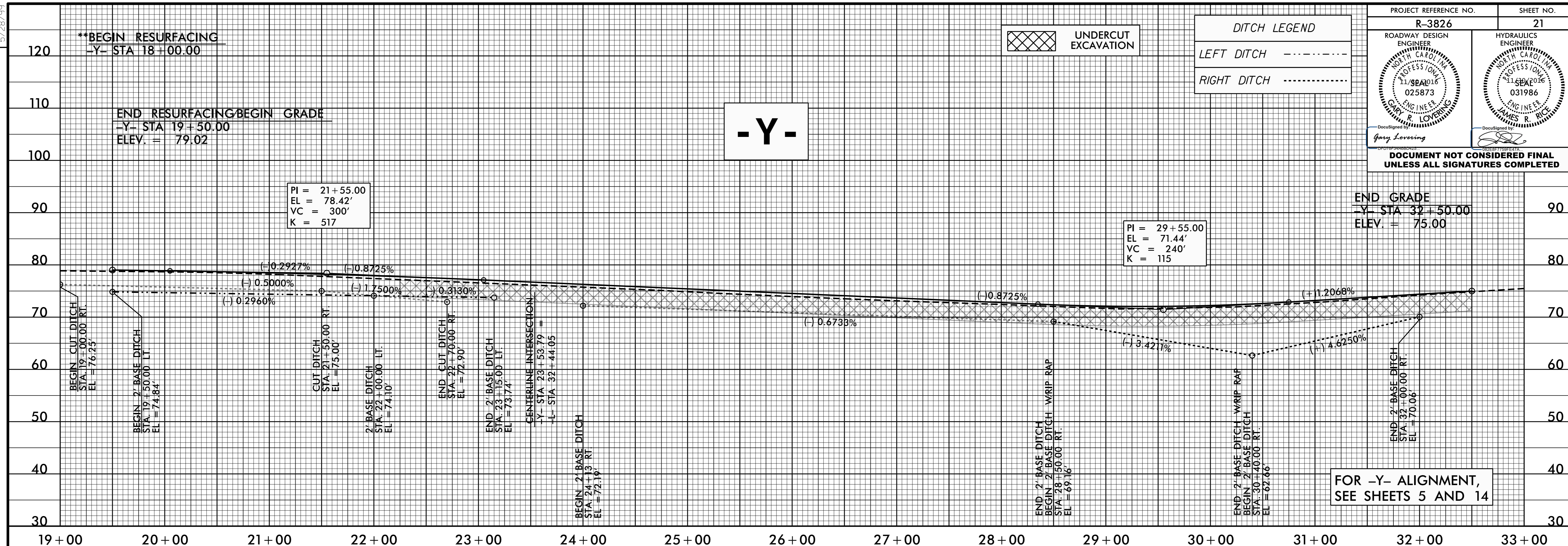


5/28/99

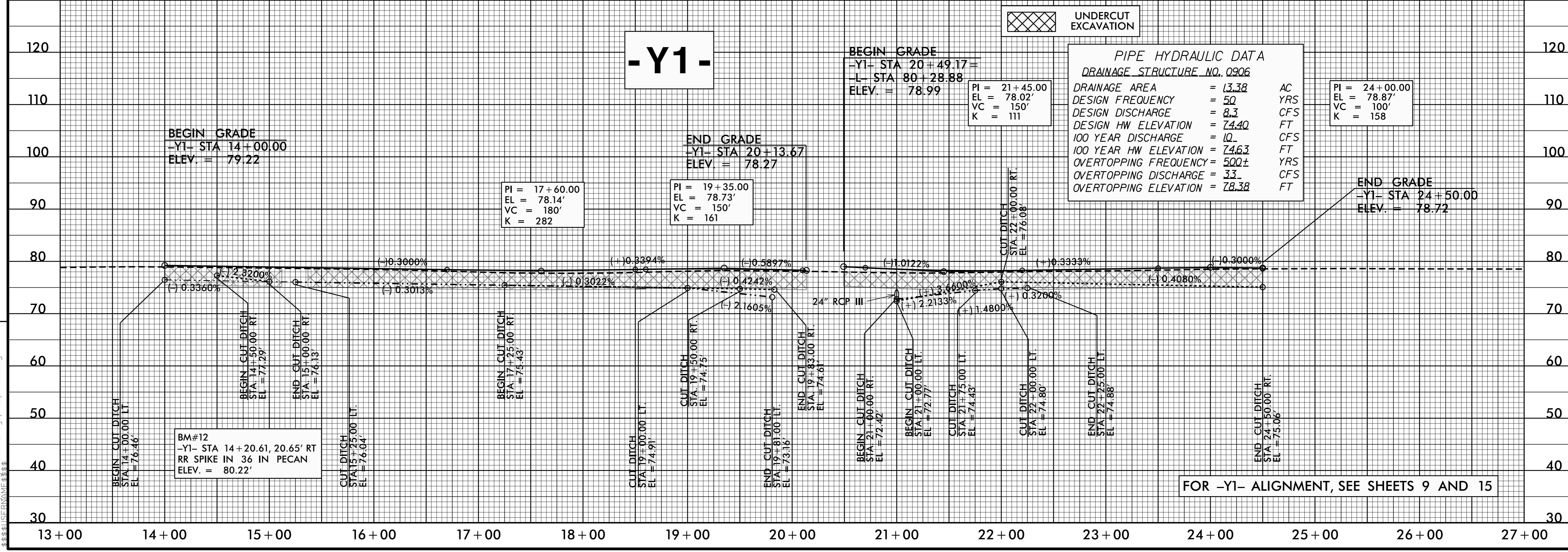
PROJECT REFERENCE NO. <b>R-3826</b>	SHEET NO. <b>21</b>
ROADWAY DESIGN ENGINEER GARY R. LOVERING 025873	HYDRAULICS ENGINEER JAMES R. RICE 031986
<p align="center"><b>DOCUMENT NOT CONSIDERED FINAL UNLESS ALL SIGNATURES COMPLETED</b></p>	

REVISIONS



FOR -Y- ALIGNMENT, SEE SHEETS 5 AND 14

22-NOV-2016 10:56 R3826-Rdy-pfl-psht-21.dgn



FOR -Y1- ALIGNMENT, SEE SHEETS 9 AND 15