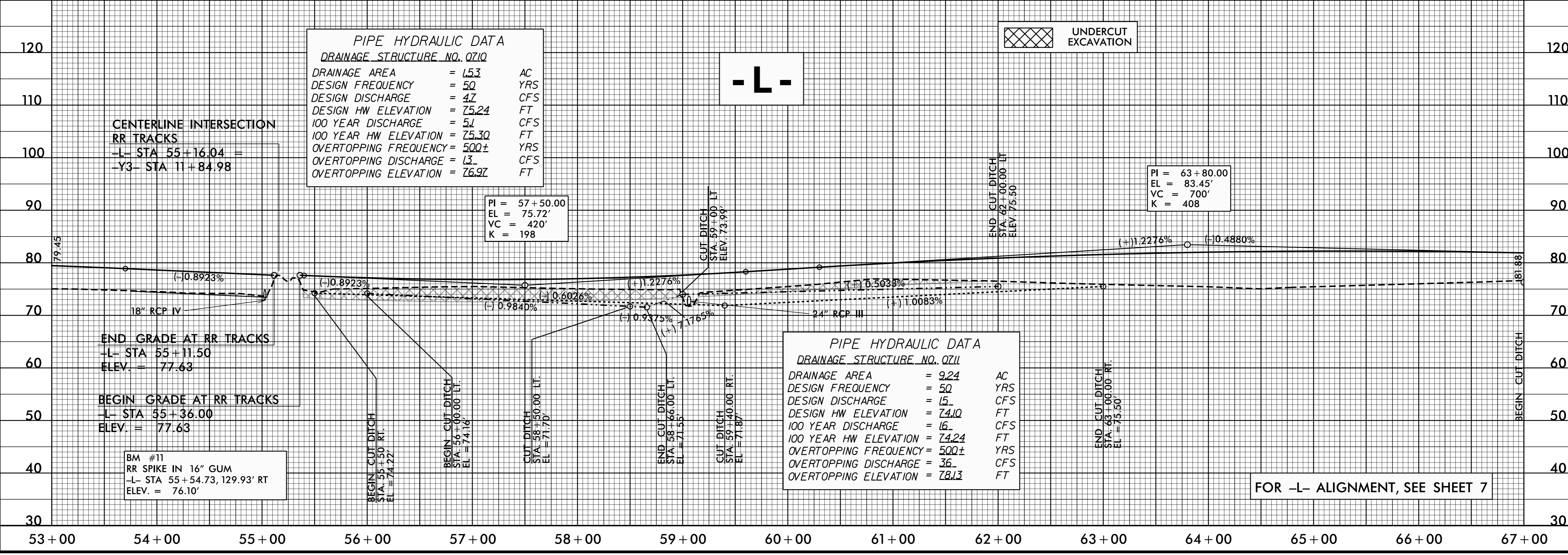
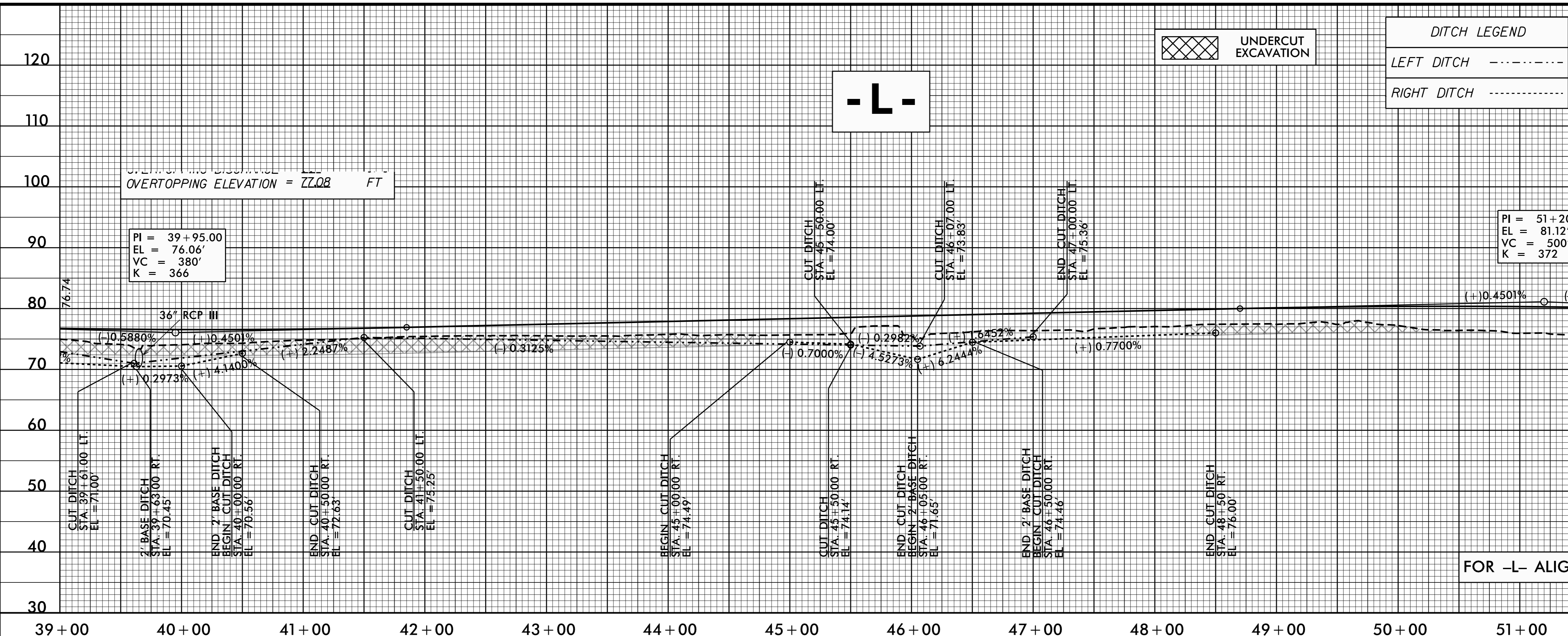


5/28/99

PROJECT REFERENCE NO. R-3826	SHEET NO. 17
ROADWAY DESIGN ENGINEER GARY R. LOVERING 11/98A016 025873 NORTH CAROLINA PROFESSIONAL ENGINEER	HYDRAULICS ENGINEER JAMES R. REED 11/98A016 031986 NORTH CAROLINA PROFESSIONAL ENGINEER
DOCUMENT NOT CONSIDERED FINAL UNLESS ALL SIGNATURES COMPLETED	



22-NOV-2016 10:56 03826.Rdy.pfl.psh.17.dgn