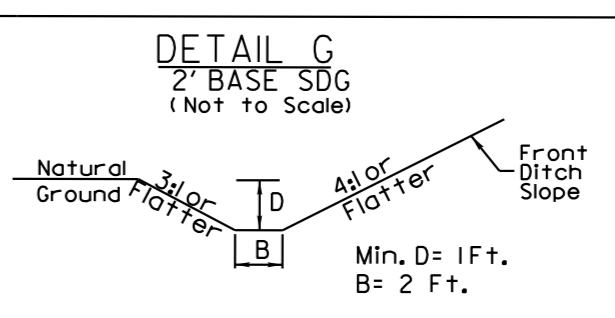
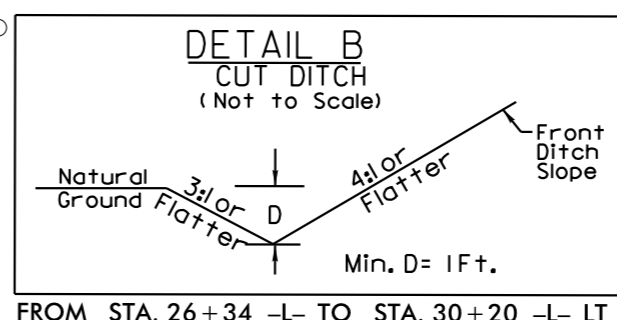
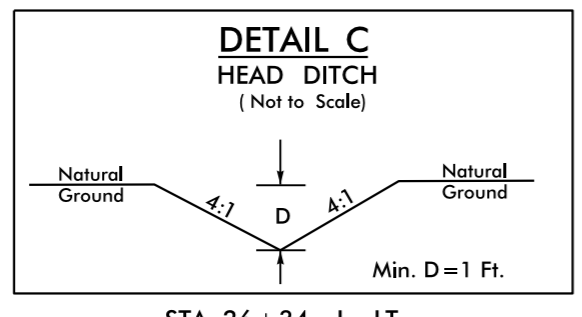


NAD 83/96



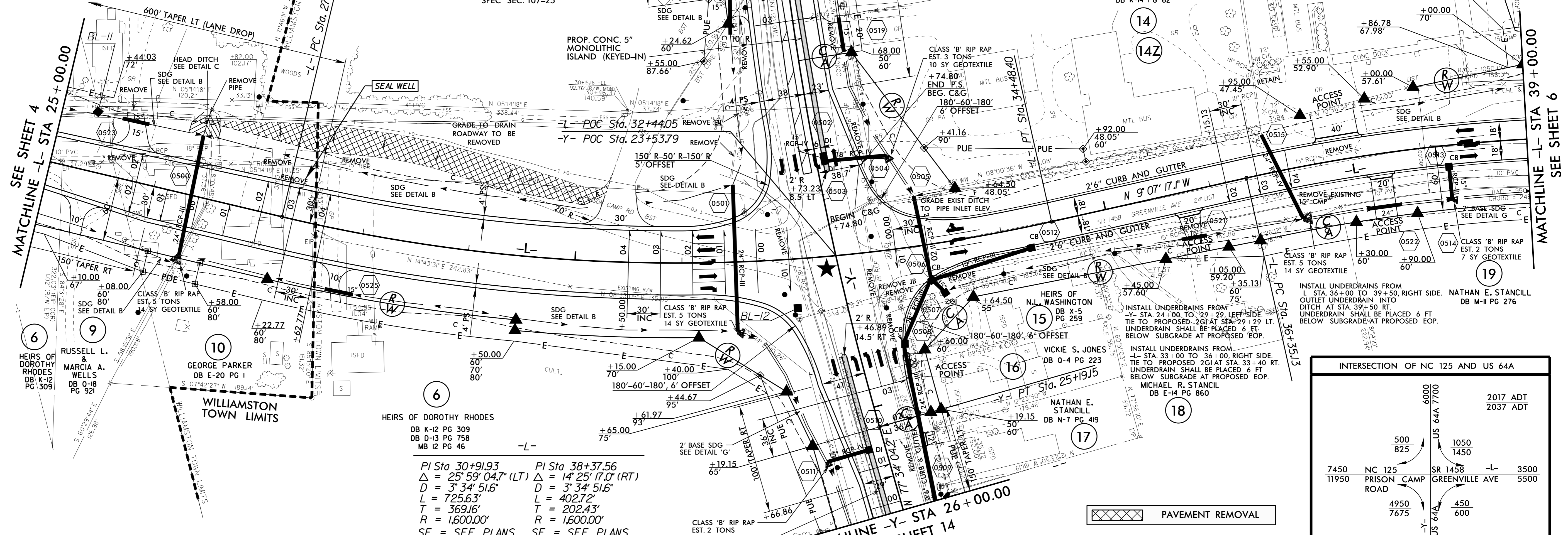
$PI\ Sta\ 22+54.54$
 $\Delta = 10^{\circ}36'53.1''\ (LT)$
 $D = 2^{\circ}00'00.0''$
 $L = 530.74'$
 $T = 266.13'$
 $R = 2,864.79'$
 $SE = SEE\ PLANS$

INSTALL UNDERDRAINS FROM -L- STA. 27+00 TO 32+00, LEFT SIDE. OUTLET UNDERDRAIN INTO DITCH AT STA. 27+00 LT. UNDERDRAIN SHALL BE PLACED 6 FT BELOW SUBGRADE AT PROPOSED EOP.

CONTAMINATED SOIL IS NOT ANTICIPATED TO BE ENCOUNTERED SPEC. SEC. 107-25

INSTALL UNDERDRAINS FROM -Y- STA. 21+00 TO 23+17, LEFT SIDE. TIE TO PROPOSED 2GI AT STA. 23+17 LT. UNDERDRAIN SHALL BE PLACED 6 FT BELOW SUBGRADE AT PROPOSED EOP.

CAP LINES AND PLUG TROUGH AT ROW AFTER REMOVING PORTION OF CONCRETE SLAB WITHIN ROW

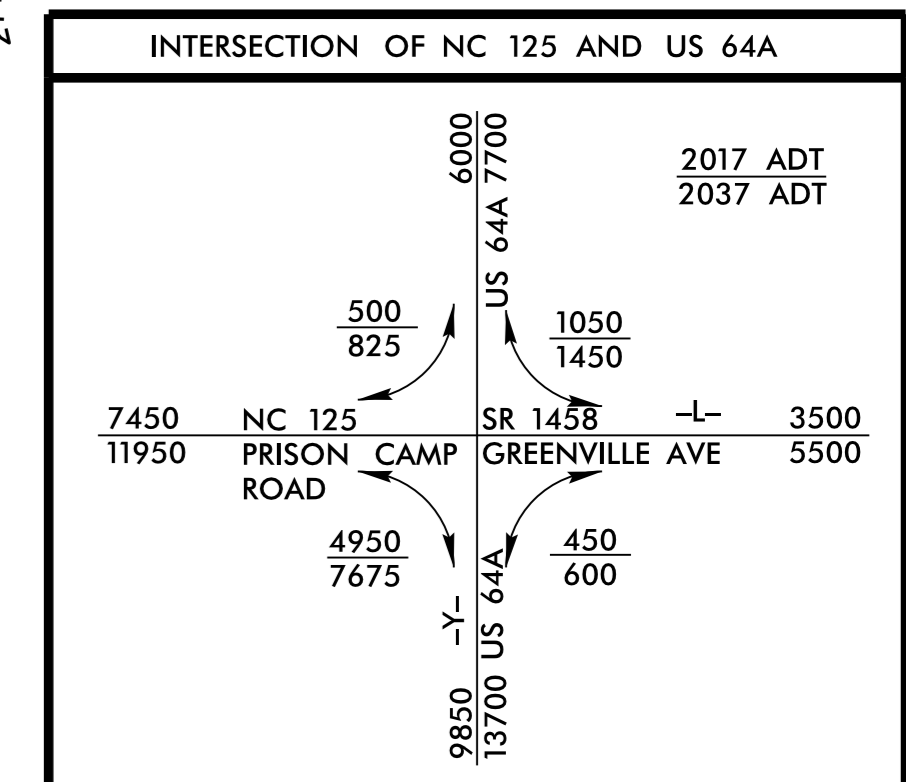


22-NOV-2016 10:55 R3826.Rdy.psh_5.dgn
 5/14/99

PAVEMENT REMOVAL

REVISED SIGNAL

DRIVEWAY RADII ARE 15' UNLESS OTHERWISE NOTED. NOTED RADII ARE FOR BOTH SIDES.



FOR -L- PROFILE, SEE SHEET 16
FOR -Y- PROFILE, SEE SHEET 21