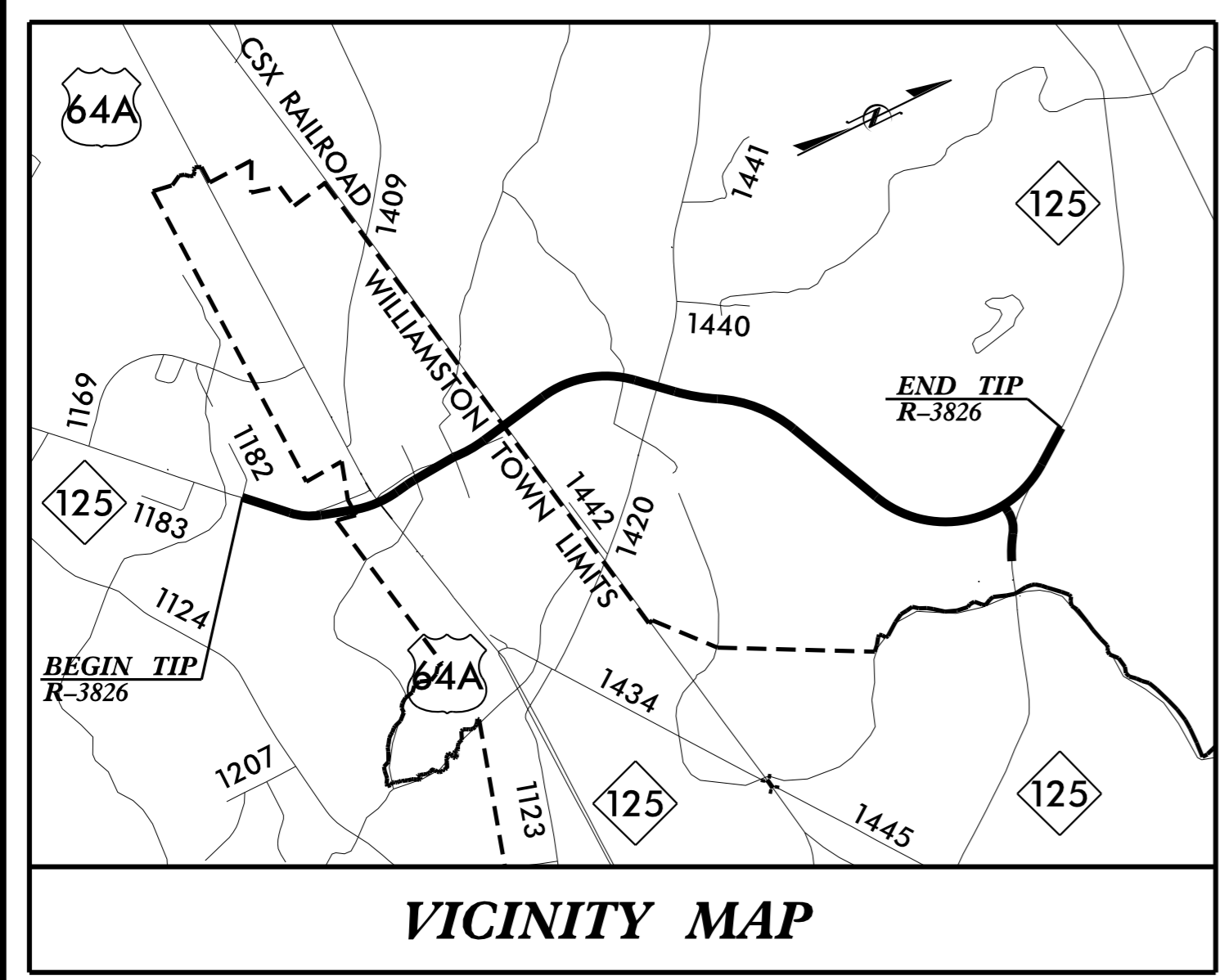


SURVEY CONTROL SHEET R-3826



CONTROL

BL	POINT	DESC.	NORTH	EAST	ELEVATION	L STATION	OFFSET
R38261	GPS MON R3826-1		763358.9340	2564841.2990	76.22	OUTSIDE PROJECT LIMITS	
R38262	GPS MON R3826-2		764156.7360	2565723.3950	71.71	11+50.26	34.32 RT
BL10	BL-10		764701.7235	2566216.1970	75.95	18+82.85	16.76 RT
BL11	BL-11		765325.0860	2566394.7236	74.28	25+32.70	55.99 LT
BL12	BL-12		765966.7358	2566618.3082	74.89	32+05.20	46.11 RT
BL14	BL-14		767585.9929	2566635.1365	76.95	48+31.97	60.79 RT
BL15	BL-15		768227.2691	2566479.5274	73.62	54+81.68	2.10 LT
BL16	BL-16		769005.8381	2566335.0965	76.22	62+73.33	5.85 LT
BL17	BL-17		769830.7647	2566374.2868	76.27	70+89.88	59.56 LT
BL18	BL-18		770578.2112	2566939.1688	77.41	80+15.01	29.69 LT
BL19	BL-19		771316.9060	2567570.6577	77.96	89+87.98	20.56 RT
BL20	BL-20		772012.6772	2568120.4778	77.95	98+72.42	51.39 LT
BL21	BL-21		772475.1977	2569156.3086	68.38	109+99.61	13.85 LT
BL22	BL-22		772934.2735	2570213.6552	58.76	121+48.11	31.66 RT
BL23	BL-23		773257.7400	2570657.7515	51.85	126+72.55	107.57 RT
BL24	BL-24		773729.2106	2570783.5307	39.57	131+34.12	11.92 LT
BL25	BL-25		774203.5166	2570915.3836	46.62	136+27.00	15.31 RT
BL26	BL-26		774596.2098	2571083.8731	43.77	139+89.12	201.53 RT

BENCHMARKS

BM10	ELEVATION = 78.24
N 764704	E 2566121
BL STATION 23+62.00 72 LEFT	
R/R SPIKE IN 24 IN PINE	

BM11	ELEVATION = 76.10
N 768323	E 2566596
BL STATION 61+30.00 132 RIGHT	
R/R SPIKE IN 16 IN GUM	

BM12	ELEVATION = 80.22
N 770973	E 2566489
BY1 STATION 20+21.00 8 RIGHT	
R/R SPIKE IN 36 IN PECAN	

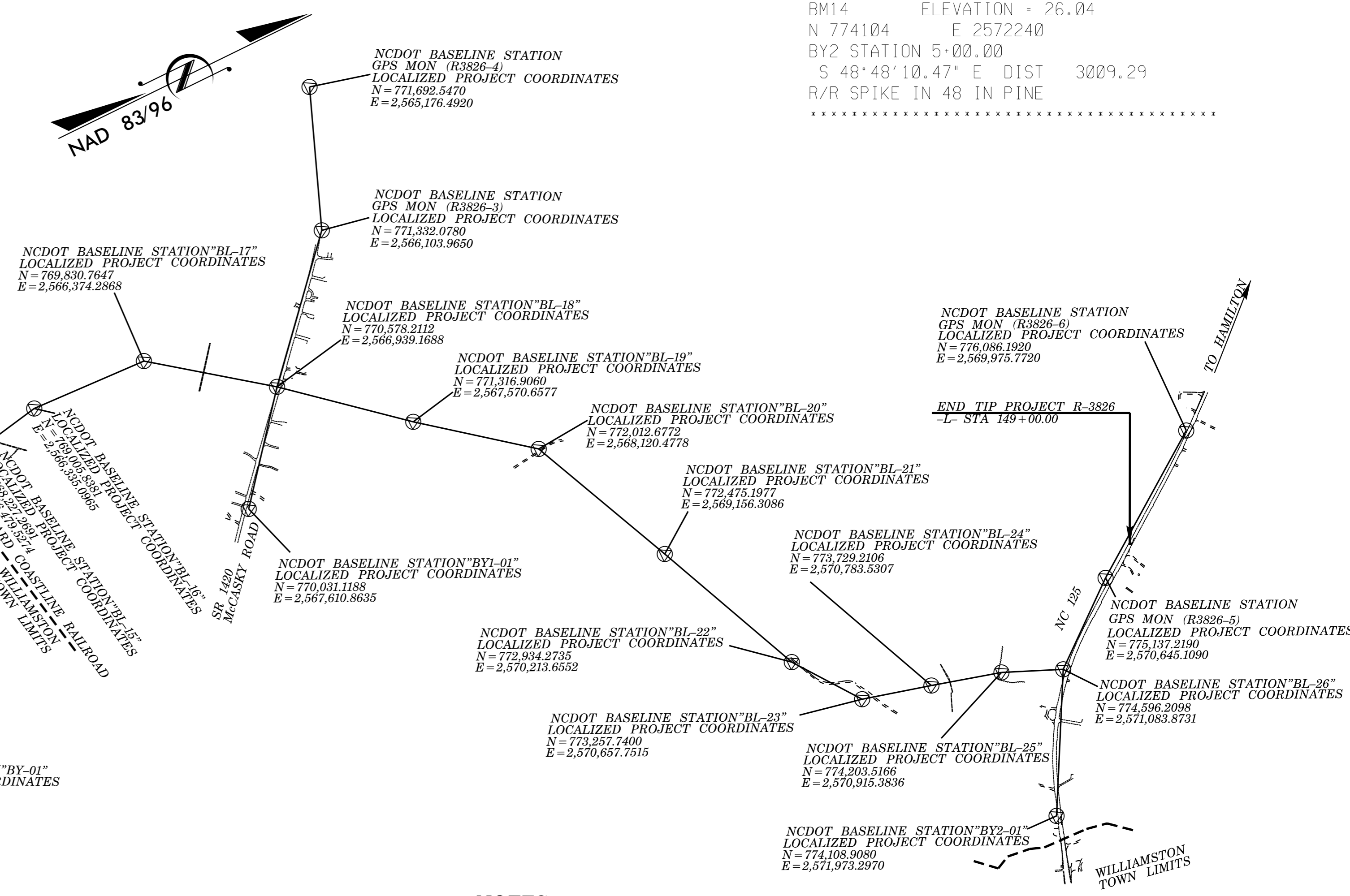
BM13	ELEVATION = 34.33
N 773783	E 2570746
BL STATION 138+37.00 50 LEFT	
R/R SPIKE IN 18 IN OAK	

BM14	ELEVATION = 26.04
N 774104	E 2572240
BY2 STATION 5+00.00	
S 48°48'10.47" E DIST 3009.29	
R/R SPIKE IN 48 IN PINE	

BY	POINT	DESC.	NORTH	EAST	ELEVATION	EY STATION	OFFSET
BY02	BY-02		766005.6863	2565859.3879	78.60	16+41.11	46.29 LT
EOBL12	BL-12		765966.7358	2566618.3082	74.89	23+93.32	45.73 RT
BY01	BY-01		766199.5987	2567618.0207	74.44	34+17.75	30.74 RT

BY1	POINT	DESC.	NORTH	EAST	ELEVATION	EY1 STATION	OFFSET
R38264	GPS MON R3826-4		771692.5470	2565176.4920	76.92	OUTSIDE PROJECT LIMITS	
R38263	GPS MON R3826-3		771332.0780	2566103.9650	77.75	OUTSIDE PROJECT LIMITS	
EOBL18	BL-18		770578.2112	2566939.1688	77.41	20+19.52	13.95 RT
BY101	BY1-01		770031.1188	2567610.8635	77.93	28+85.38	26.94 LT

BY2	POINT	DESC.	NORTH	EAST	ELEVATION	EY2 STATION	OFFSET
R38266	GPS MON R3826-6		776086.1920	2569975.7720	60.03	12+94.30	17.05 RT
R38265	GPS MON R3826-5		775137.2190	2570645.1090	62.81	24+57.00	40.39 RT
EOBL26	BL-26		774596.2098	2571083.8731	43.77	31+48.43	32.44 RT
BY201	BY2-01		774108.9080	2571973.2970	19.89	41+60.38	21.48 RT



DATUM DESCRIPTION

THE LOCALIZED COORDINATE SYSTEM DEVELOPED FOR THIS PROJECT IS BASED ON THE STATE PLANE COORDINATES ESTABLISHED BY NCDOT FOR MONUMENT "CASKEY" WITH NAD 83/ (CORS96) STATE PLANE GRID COORDINATES OF NORTHING: 770,400.000(+) EASTING: 2,569,000.000(+)

THE AVERAGE COMBINED GRID FACTOR USED ON THIS PROJECT (GROUND TO GRID) IS: 0.9992957

THE N.C. LAMBERT GRID BEARING AND LOCALIZED HORIZONTAL GROUND DISTANCE FROM "CASKEY" TO -L- STATION 12+00.00 IS S 27° 50' 47" W 6,993.4771'

ALL LINEAR DIMENSIONS ARE LOCALIZED HORIZONTAL DISTANCES VERTICAL DATUM USED IS NAVD 88

NOTES:

THE CONTROL DATA FOR THIS PROJECT CAN BE FOUND ELECTRONICALLY BY SELECTING PROJECT CONTROL DATA AT:
[HTTP://WWW.DOH.DOT.STATE.NC.US/PRECONSTRUCTHIGHWAYLOCATION/PROJECT/](http://www.doh.dot.state.nc.us/preconstructhighwaylocation/project/)
 FILE: R3826_ls_control.txt

SITE CALIBRATION INFORMATION HAS NOT BEEN PROVIDED FOR THIS PROJECT. IF FURTHER INFORMATION IS NEEDED, PLEASE CONTACT THE LOCATION AND SURVEYS UNIT.

⊙ INDICATES GEODETIC CONTROL MONUMENTS USED OR SET FOR HORIZONTAL PROJECT CONTROL BY THE NCDOT LOCATION AND SURVEYS UNIT.
 PROJECT CONTROL ESTABLISHED USING CONVENTIONAL METHODS FROM R-3620 CONTROL MONUMENTATION.

NOTE: DRAWING NOT TO SCALE